

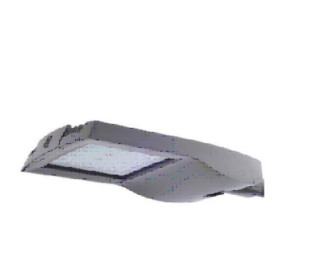
- Notes:**
- This drawing is for planning purposes only.
 - Lighting design to be finalised during detail design stage.
 - Lighting will be designed to EN 12464-2:2014 to satisfy lux levels and uniformity for lighting of outdoor work places.
 - All final locations of proposed electrical substations are subject to confirmation based on ESB requirements.
 - The substation locations are based on ESB design requirements for maximum length of cable runs, transformer loading and supply continuity.

Luminaire Schedule:

Type A1
VeeLite Tech Series 8m 36W Lighting Column
5TC13GLC (Street Optic)



Type B1
VeeLite Tech Series 6m 27W Lighting Column
5TCA11GLB (Street Optic)



Type B2
Tech Series 6m 27W Lighting Column
5TCA11GLB (Street Optic)



Type C1
Eco Castor Bollard Luminaire
33925000
(Wide Beam)



New Single Head Column

New Double Head Column

New Lighting Bollard

Proposed location of electrical kiosks/substations

P01	20/01/21	DB	DB	KG
S2 - Suitable for Information				
P01	11/12/20	DB	DB	KG
S2 - Suitable for Information				
P01	07/08/20	GC	DB	KG
S2 - Suitable for Information				
Rev	Desc	By	Chkd	Appr

ARUP
 Arup, Harcourt House,
 Upper Harcourt Street, Limerick
 Tel: +353 (0)61 212100
 www.arup.com

Client
Limerick 2030

Project Title
**Mungret Residential Development
 Mungret Co. Limerick**

Drawing Title
Proposed Lighting Layout

Scale of A0: 1:500
 Role: Electrical
 Suitability: S2 - Suitable for Information
 Arup Job No: 261585-00
 Name: **MUN-ARUP-ZZ-ZZ-DR-E-0010**