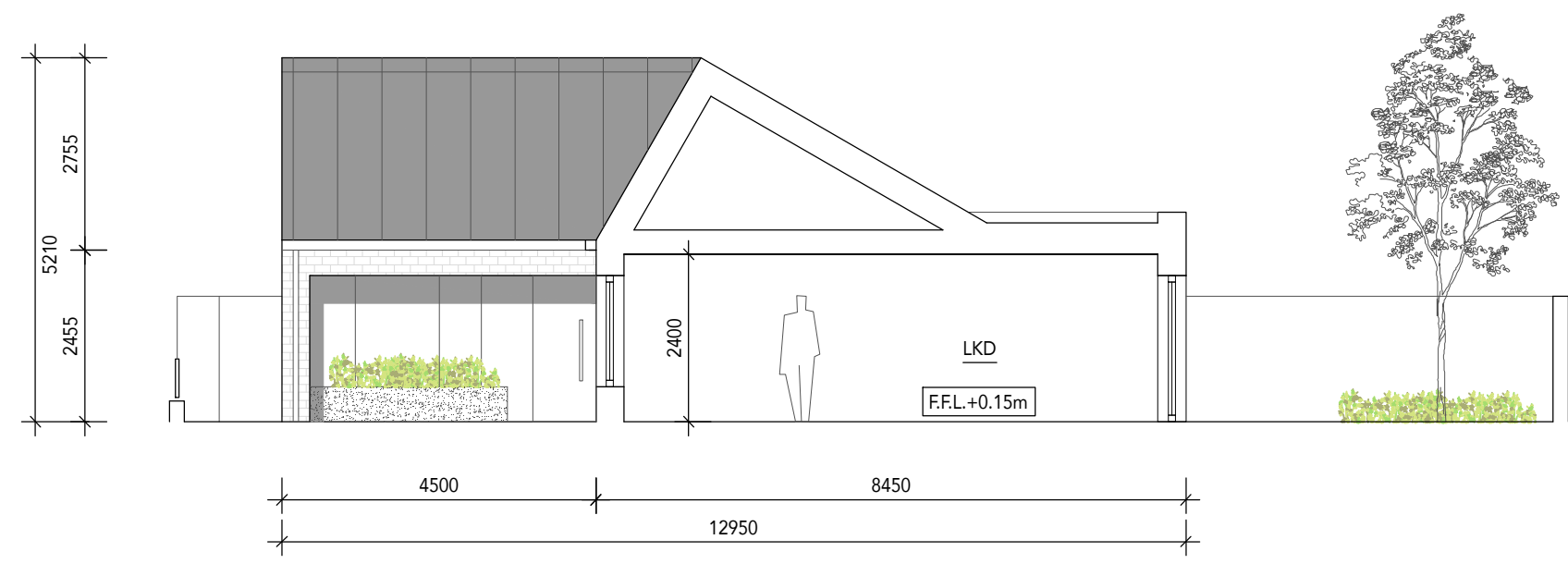
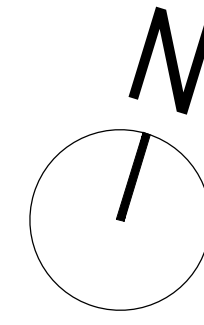
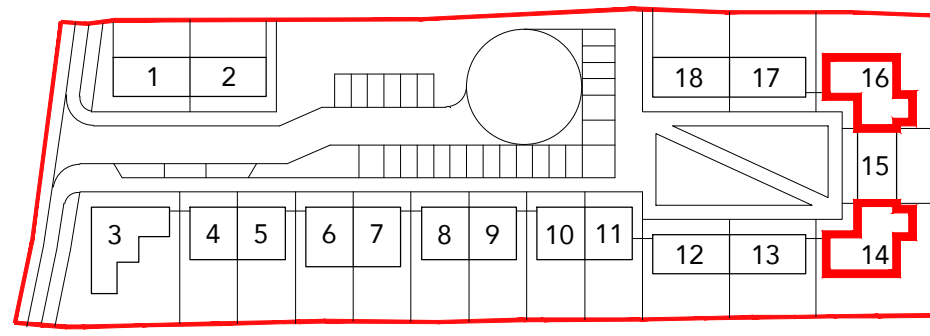


UNIT TYPE B

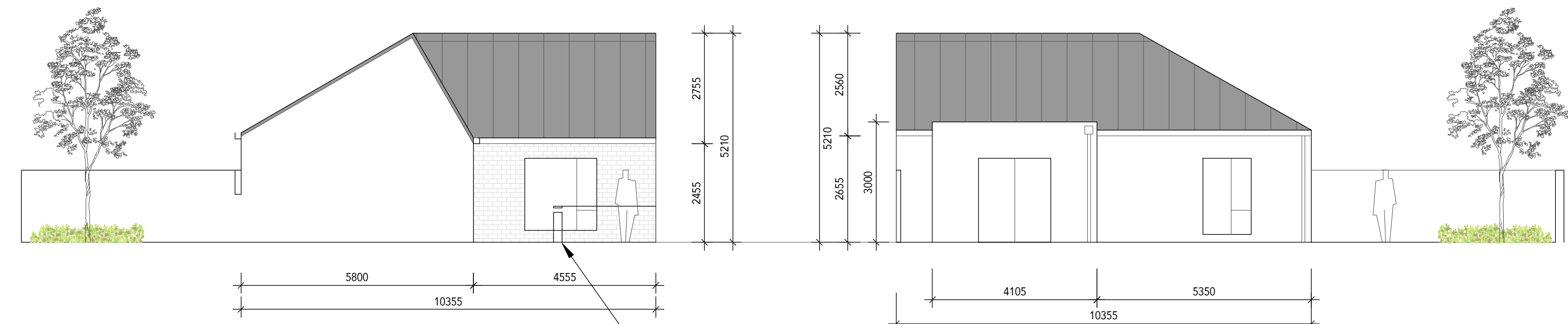
UNIT SCHEDULE OF ACCOMODATION

UNIT TYPE:	STOREYS:	DESCRIPTION:	UNITS:	DHPLG MINIMUM INTERNAL GFA:
B	1	4 PERSON 2 BED HOUSE	2 no. (UNITS 14, 16)	70.0sqm
PROPOSED INTERNAL GFA:	AGGREGATE LIVING AREA:	AGGREGATE BEDROOM AREA:	AGGREGATE STORAGE:	PRIVATE OPEN SPACE:
76.9 sqm (+10% over minimum)	30.1sqm	25.1sqm (13.1 + 12.0)	4.0sqm	EXCEEDS REQUIRED MINIMUM

UNIT KEY PLAN



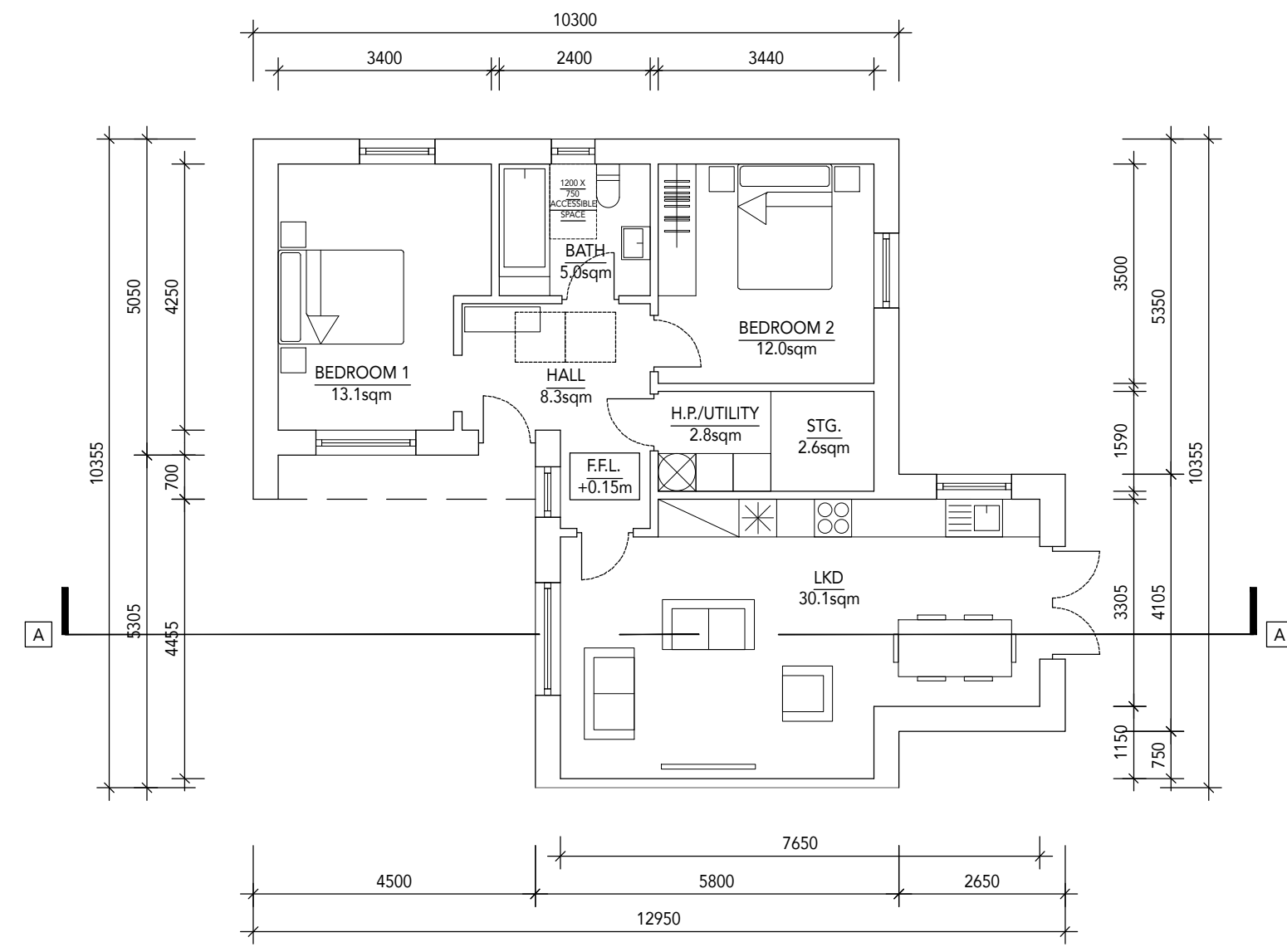
SECTION A-A



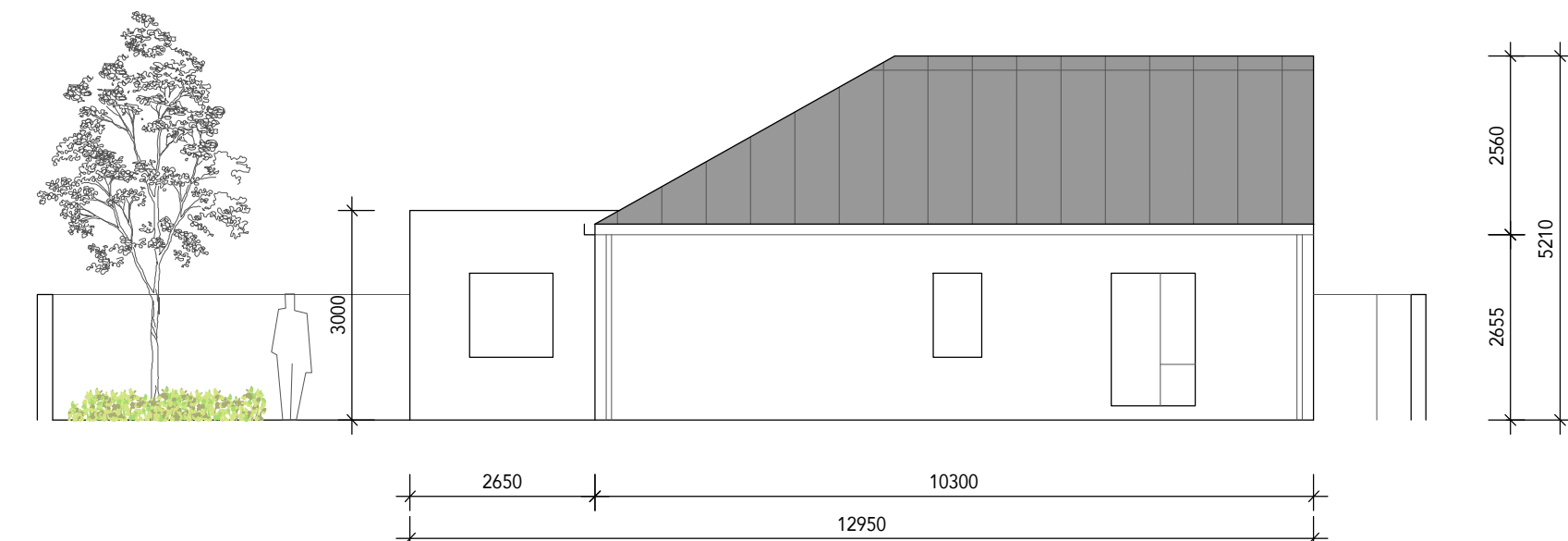
SIDE ELEVATION

REAR ELEVATION

FRONT GARDEN/PRIVACY STRIP BOUNDARY WALLS TO BE LOW BRICK WALLS WITH TOP RAILING AND MATCHING ACCESS GATES



GROUND FLOOR LAYOUT



REAR ELEVATION

MATERIALS LEGEND:

	RENDER FINISH TO REAR		TILE / SLATE ROOF FINISH WITH ALUMINIUM / PVC ROUNDPIPE RAINWATER GOODS
	BRICK FINISH		BUILT IN CONCRETE PLANTER AND/OR SEAT

REVISIONS

DATE	REV.	BY	CH.	DESCRIPTION

Limerick City & County Council
Design & Delivery Services
Merchants Quay
Limerick

PROJECT: BROADFORD HOUSING BROADFORD, COUNTY LIMERICK		
STAGE: PART B PLANNING APPLICATION		
DRAWING TITLE: PROPOSED UNIT TYPE B GENERAL ARRANGEMENT DRAWINGS		
DRAWING No.	SHEET SIZE	REVISION
17059-201	A1	-

COPYRIGHT:
The design and details shown on this drawing are applicable to their project only and may not be reproduced in whole or in part or be used for any other project or purpose without the written permission of Limerick City and County Council with whom copyright resides.

DO NOT SCALE from this drawing. Use figured dimensions. Contractor to check all dimensions on site prior to commencement of works. Any discrepancies are to be referred to the ARCHITECT.