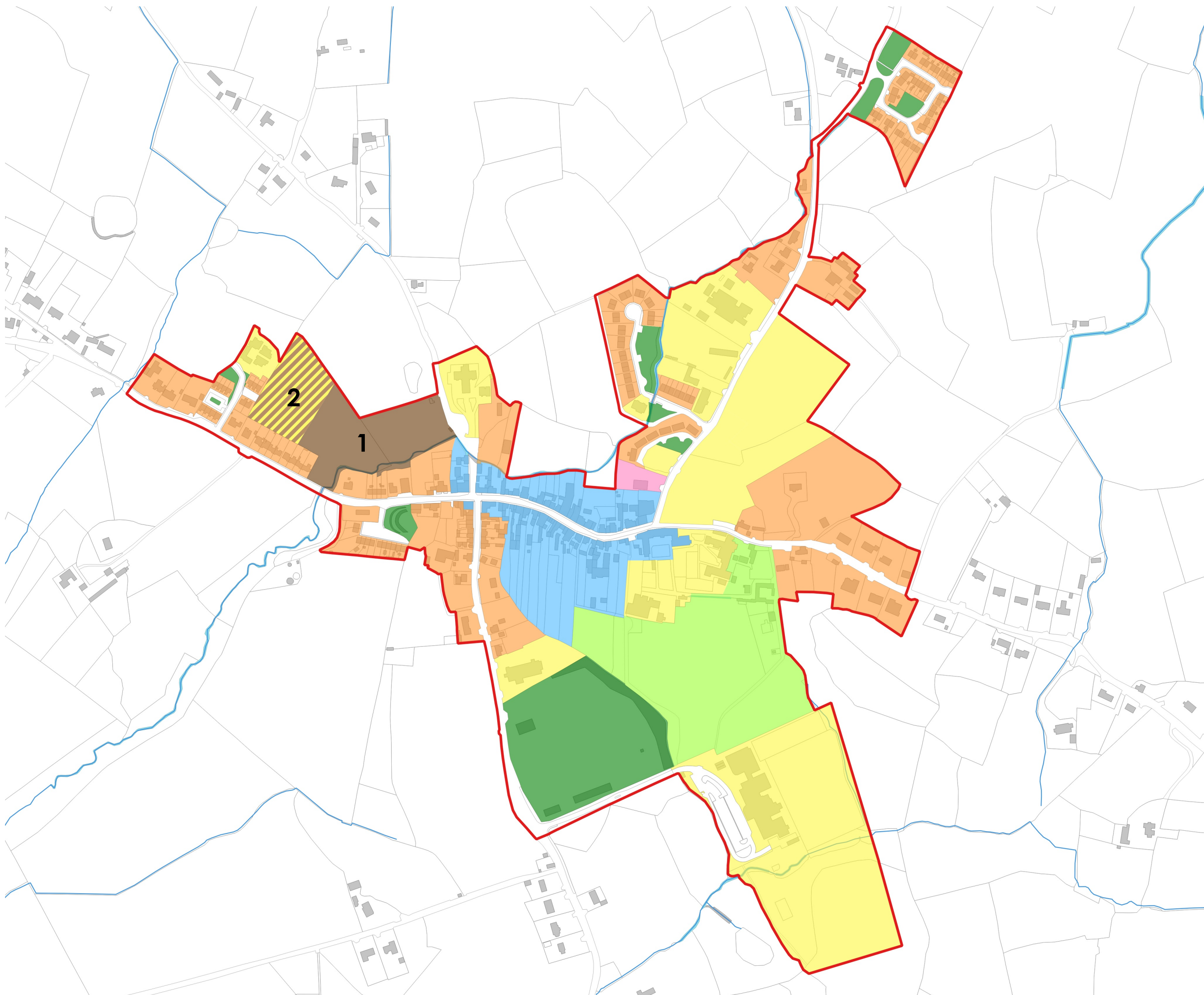


**Draft Limerick  
Development Plan  
2022 -2028**

**Doon Zoning Map  
Material Alterations**



**LEGEND**

-  Existing Residential
-  New Residential
-  Residential Service Sites
-  Education & Community Facilities
-  Village Centre
-  Enterprise & Employer
-  Agriculture
-  Open Space & Recreation
-  Settlement boundary

DATE	March '22	Dwg. No.	CDP-V2-L4-DN-01
OSI LICENCE No.	© Ordnance Survey Ireland. All rights reserved. Licence No. 2017/09/CDMA/Limerick City & County Council		