

PLAN

LEGEND:

-  CARRIAGEWAY
-  FOOTPATH
-  KERBLINE
-  COMBINED BELISHA BEACON AND LIGHT
-  TACTILE BLISTER PAVING, RED FINISH (400x400mm)

NOTES:

1. A CLEAR FOOTPATH PASSAGE WIDTH OF 1.2m SHOULD BE MAINTAINED BETWEEN ALL STREET FURNITURE, TREES ETC.
2. FOR TACTILE PAVING DETAILS REFER TO CC-SCD-05137.
3. FOR DETAILS OF THE LENGTH OF ZIGZAG MARKINGS REFER TO THE TRAFFIC SIGNS MANUAL.
4. DROPPED KERBS MUST BE LAID FLUSH WITH CARRIAGEWAY SURFACE, WITH AN ABSOLUTE MAXIMUM UPSTAND OF 6mm.



ACTIVITY



PUBLICATION TITLE

ZEBRA CROSSING
ROAD MARKINGS AND GENERAL LAYOUT

STREAM

STANDARD CONSTRUCTION DETAIL (SCD)

HISTORICAL REFERENCE

N/A

DOCUMENTATION SET

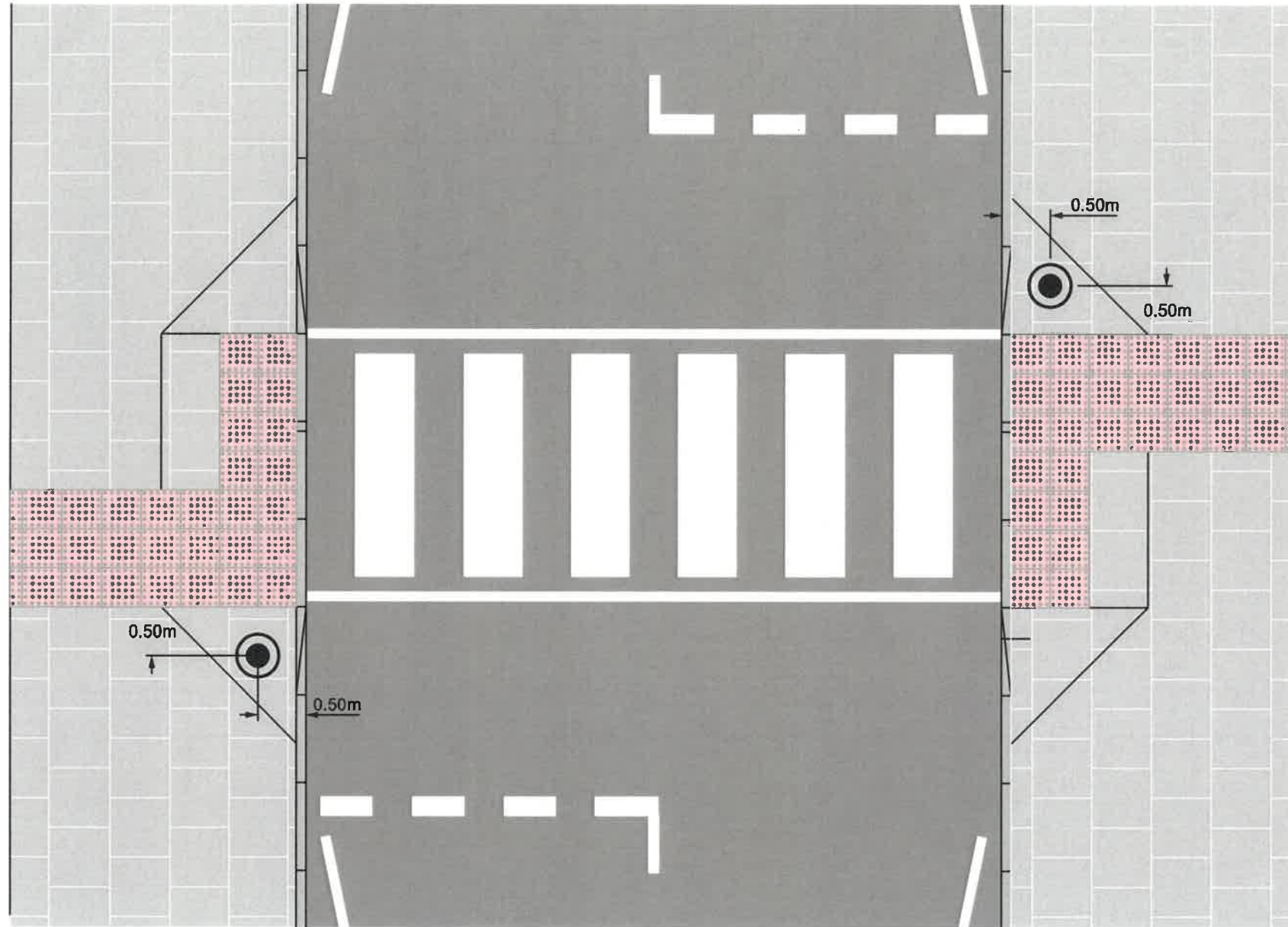
STANDARD

PUBLICATION DATE

JULY 2021

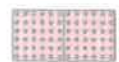
PUBLICATION NUMBER

ACTIVITY	STREAM	DRAWING NUMBER
CC	SCD	05125



PLAN

LEGEND:



TACTILE BLISTER PAVING, RED FINISH (400x400mm)



COMBINED BELISHA BEACON AND LIGHT

NOTES:

1. MODULE TYPE B (400mm BY 400mm) ONLY IS SHOWN HERE AND SHALL BE USED IN MOST CASES. OTHER SIZE MODULES MAY BE USED WHERE SITE SPECIFIC CIRCUMSTANCES DICTATE.
2. TACTILE BLISTER PAVING SHALL BE BEDDED ON 25mm MOIST SAND/CEMENT MORTAR (3:1), JOINTS FILLED WITH 4:1 MIX WITHIN 2mm OF THE PAVING SURFACE.



ACTIVITY



STREAM

STANDARD CONSTRUCTION DETAIL (SCD)

PUBLICATION TITLE

ZEBRA CROSSING TACTILE PAVING AND POLE POSITION DETAIL

HISTORICAL REFERENCE

N/A

DOCUMENTATION SET

STANDARD

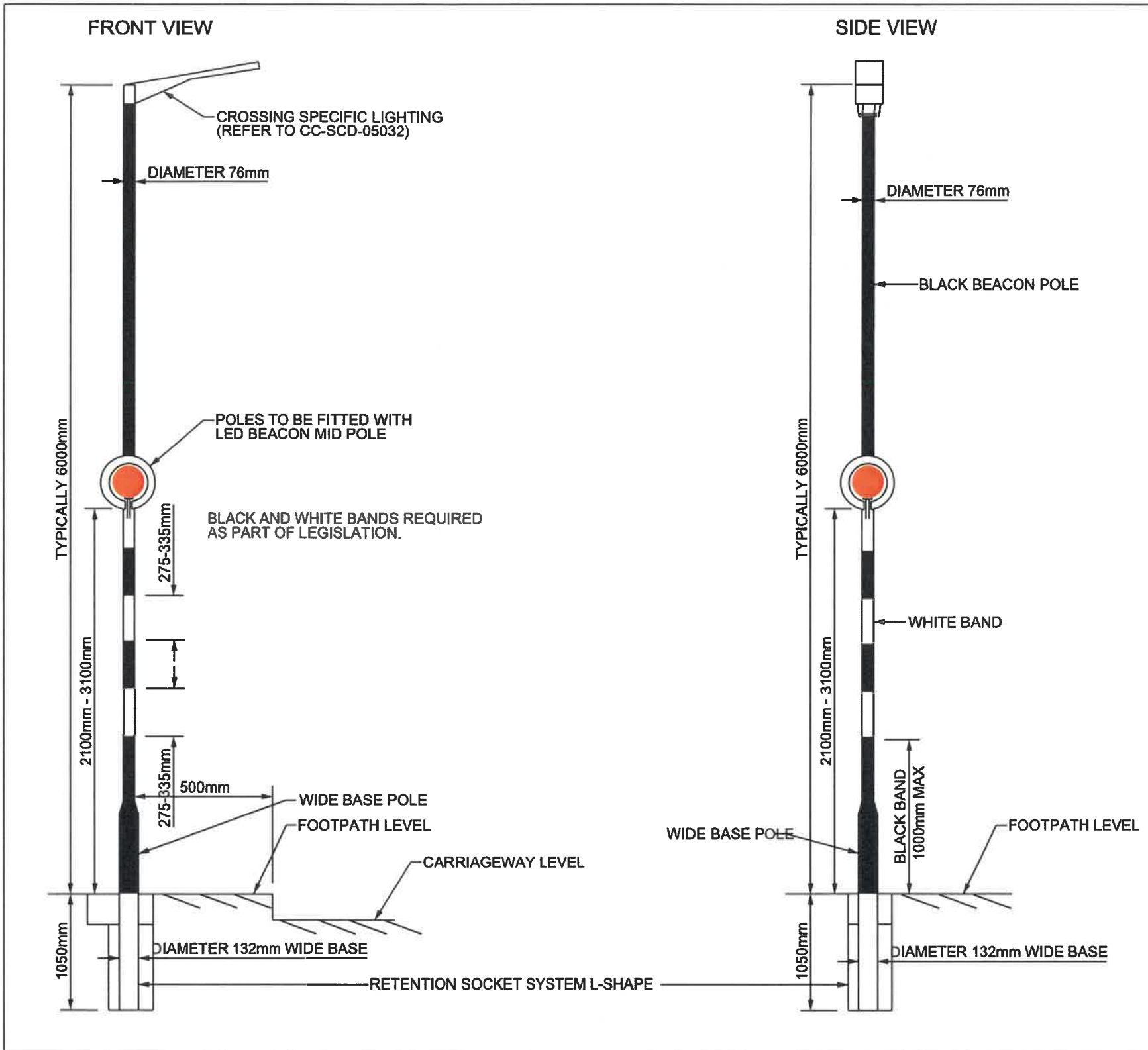
PUBLICATION DATE

JULY 2021

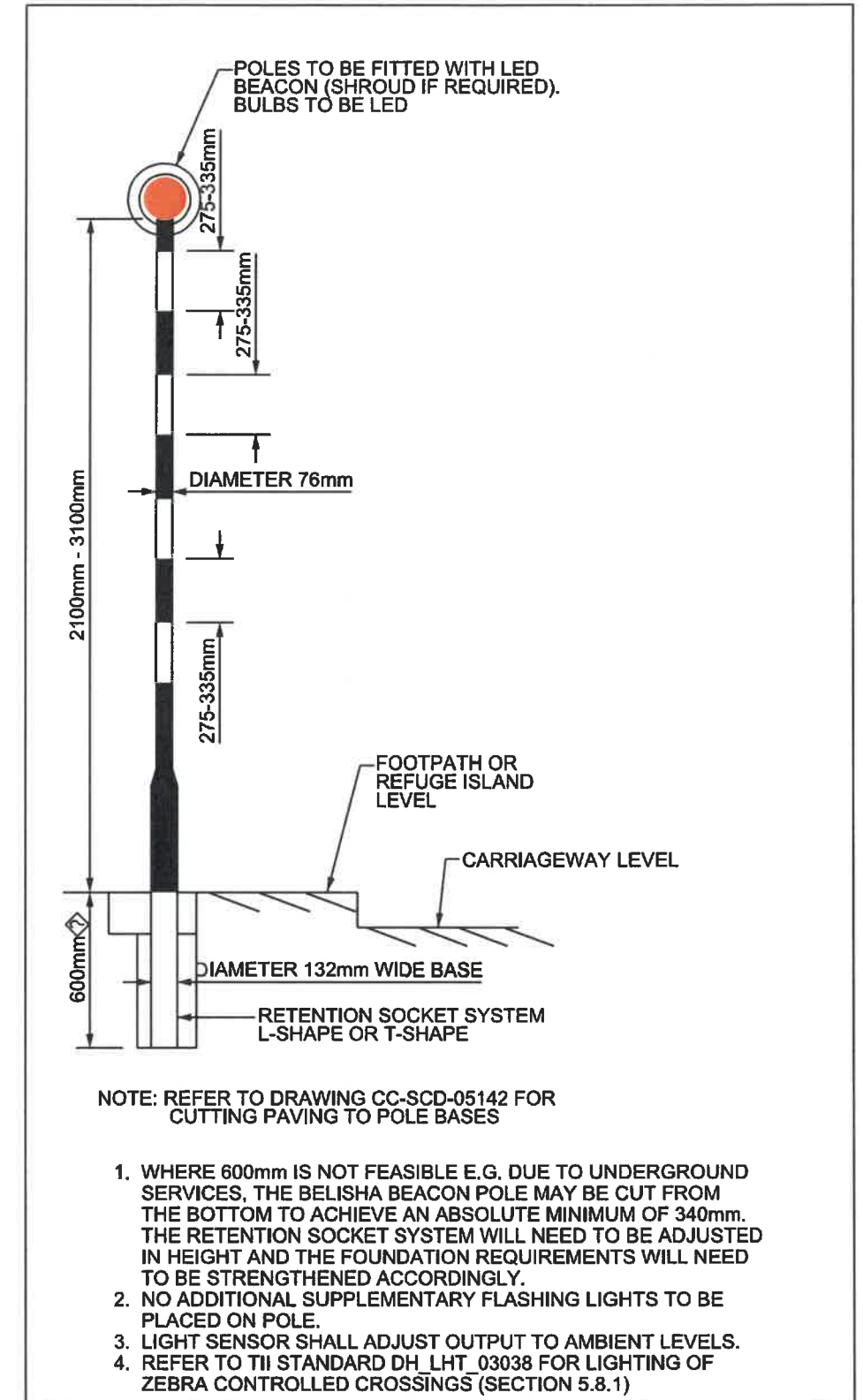
PUBLICATION NUMBER

ACTIVITY	STREAM	DRAWING NUMBER
CC	SCD	05134

**TYPE B1
INTERGRAL BELISHA STREET LIGHT FITTED WITH LANTERN AT 6m HEIGHT**



**TYPE B2
BEACON ON TOP, NO ADDITIONAL LANTERN**



ACTIVITY



STREAM

STANDARD CONSTRUCTION DETAIL (SCD)

PUBLICATION TITLE

BELISHA BEACON POLE DETAIL

HISTORICAL REFERENCE

N/A

DOCUMENTATION SET

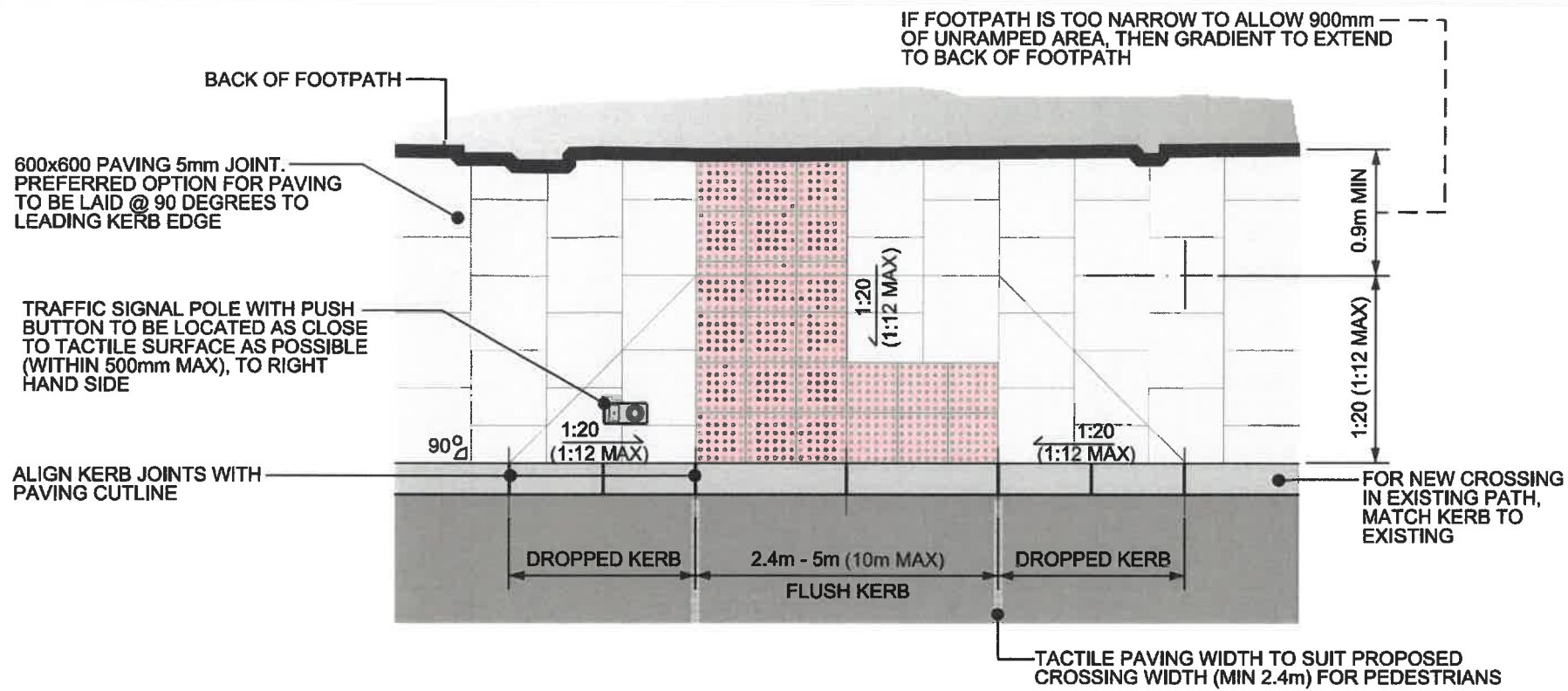
STANDARD

PUBLICATION DATE

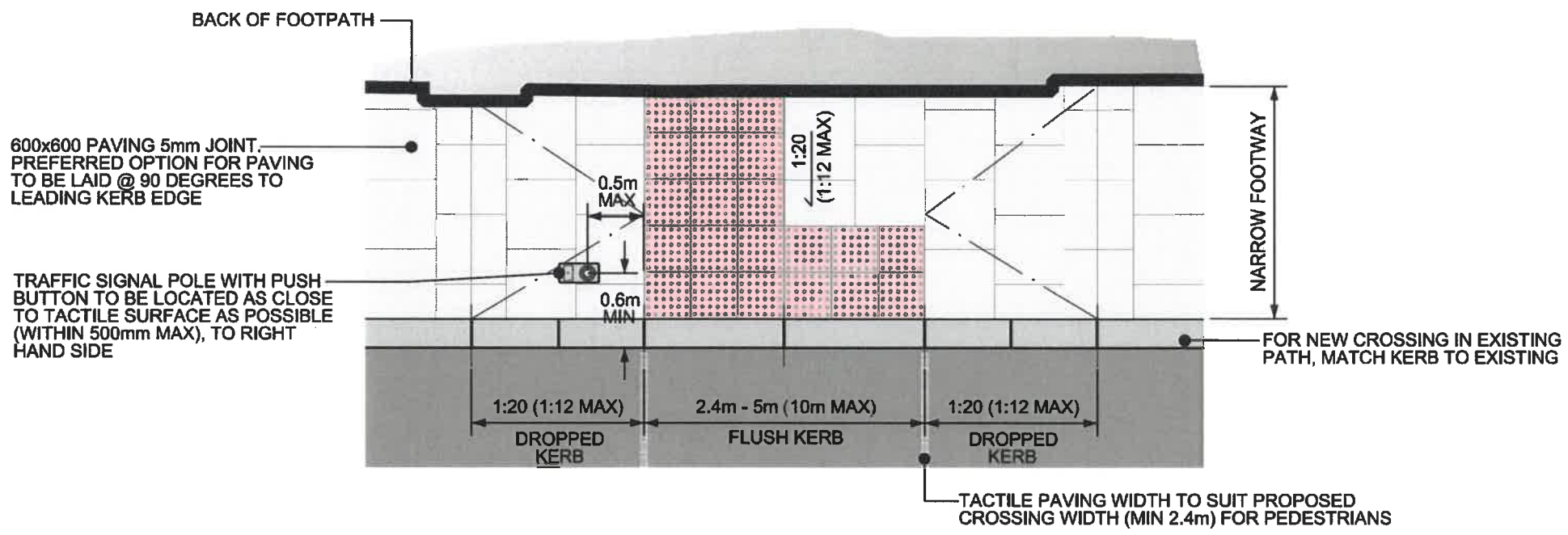
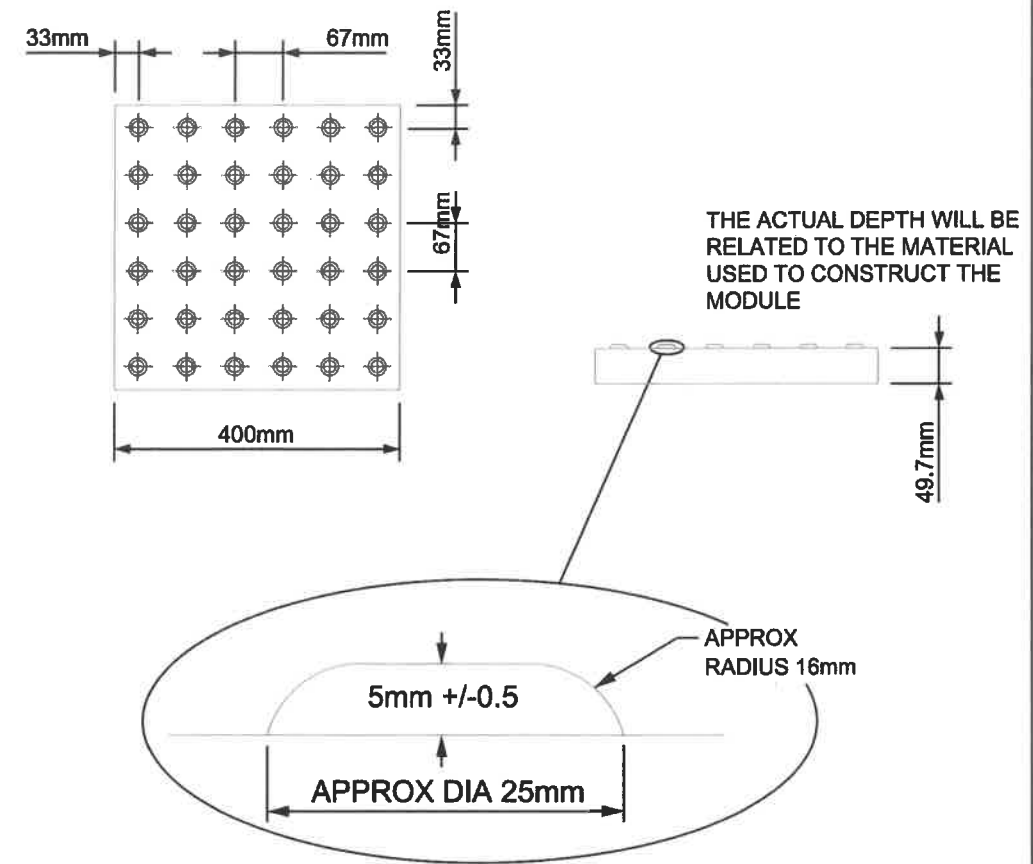
JULY 2021

PUBLICATION NUMBER

ACTIVITY	STREAM	DRAWING NUMBER
CC	SCD	05138



MODULE TYPE B - 36 DOMES



NOTES:

1. THE TACTILE DOMES ON THE TILES MUST BE LINED UP TO GIVE THE DIRECTION OF TRAVEL IN ORDER TO CROSS THE CARRIAGEWAY STRAIGHT
2. UTILITY CABINETS/CHAMBERS MUST NOT BE LOCATED WITHIN TACTILE PAVING AREA
3. RETENTION SOCKETS TO BE FITTED AT BASE OF ALL SIGNAL POLES. SOCKET ACCESS ORIENTATED SO THAT ACCESS IS GAINED FROM FOOTPATH
4. REFER TO TACTILE PAVING GUIDANCE DOCUMENTATION
5. MODULE TYPE B (400 x 400mm) ONLY IS SHOWN HERE AND SHALL BE USED IN MOST CASES. OTHER SIZE MODULES MAY BE USED WHERE SITE SPECIFIC CIRCUMSTANCES DICTATE.
6. TACTILE BLISTER PAVING SHALL BE BEDDED ON 25mm MOIST SAND / CEMENT MORTAR (3:1), JOINTS FILLED WITH 4:1 MIX WITHIN 2mm OF THE PAVING SURFACE.

LEGEND:

 TACTILE PAVIOUR: 400X400 RED FINISH (5mm JOINT). TACTILE TO BE LAID SO BLISTER PATTERN IS IN LINE WITH CROSSING



ACTIVITY
 Construction & Commissioning
 STREAM
 STANDARD CONSTRUCTION DETAILS (SCD)

PUBLICATION TITLE			
TACTILE PAVING DETAIL AND RECOMMENDED GRADIENTS - CONTROLLED PEDESTRIAN CROSSING			
HISTORICAL REFERENCE	DOCUMENTATION SET	PUBLICATION DATE	PUBLICATION NUMBER
N/A	STANDARDS	JULY 2021	CC SCD 05137