

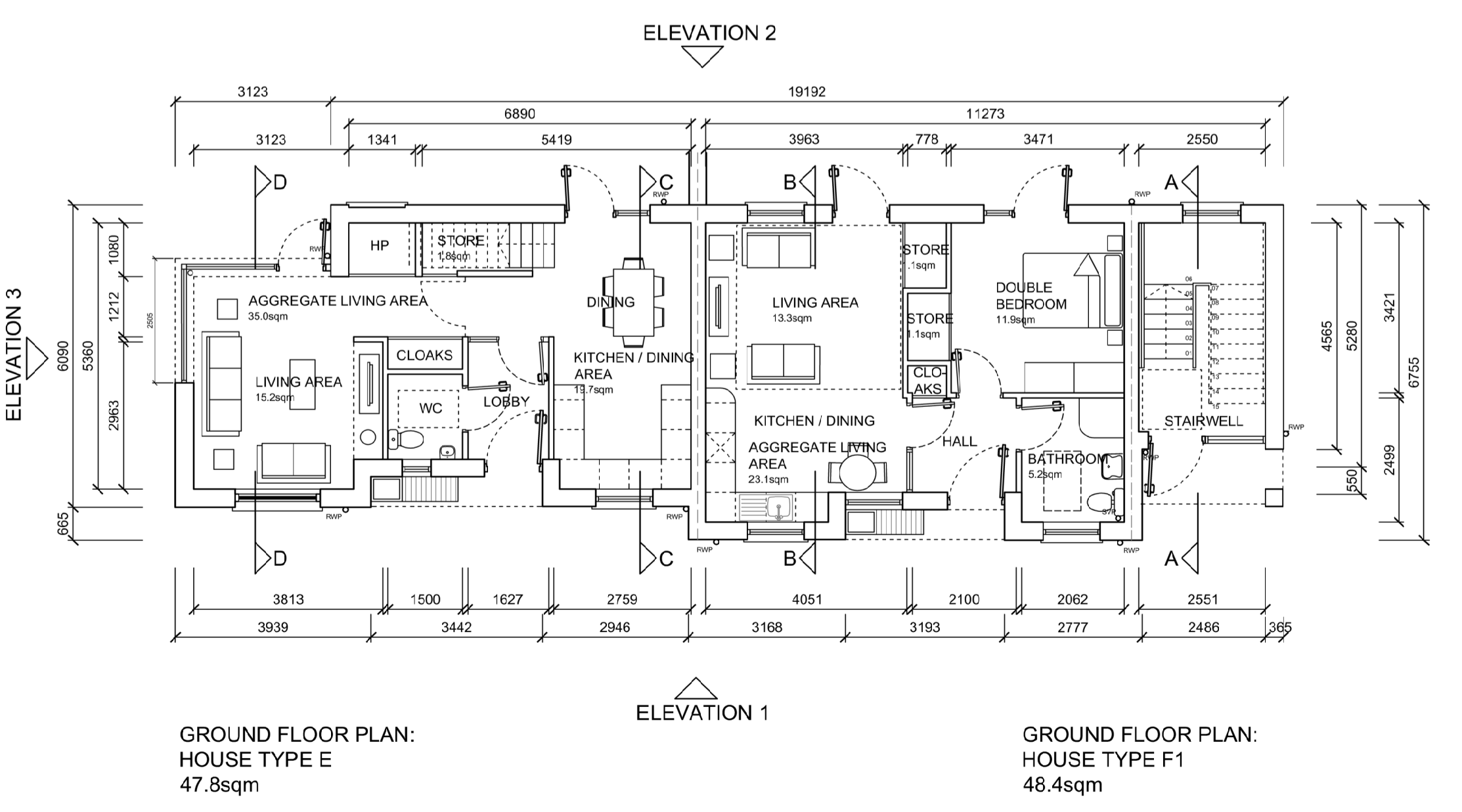
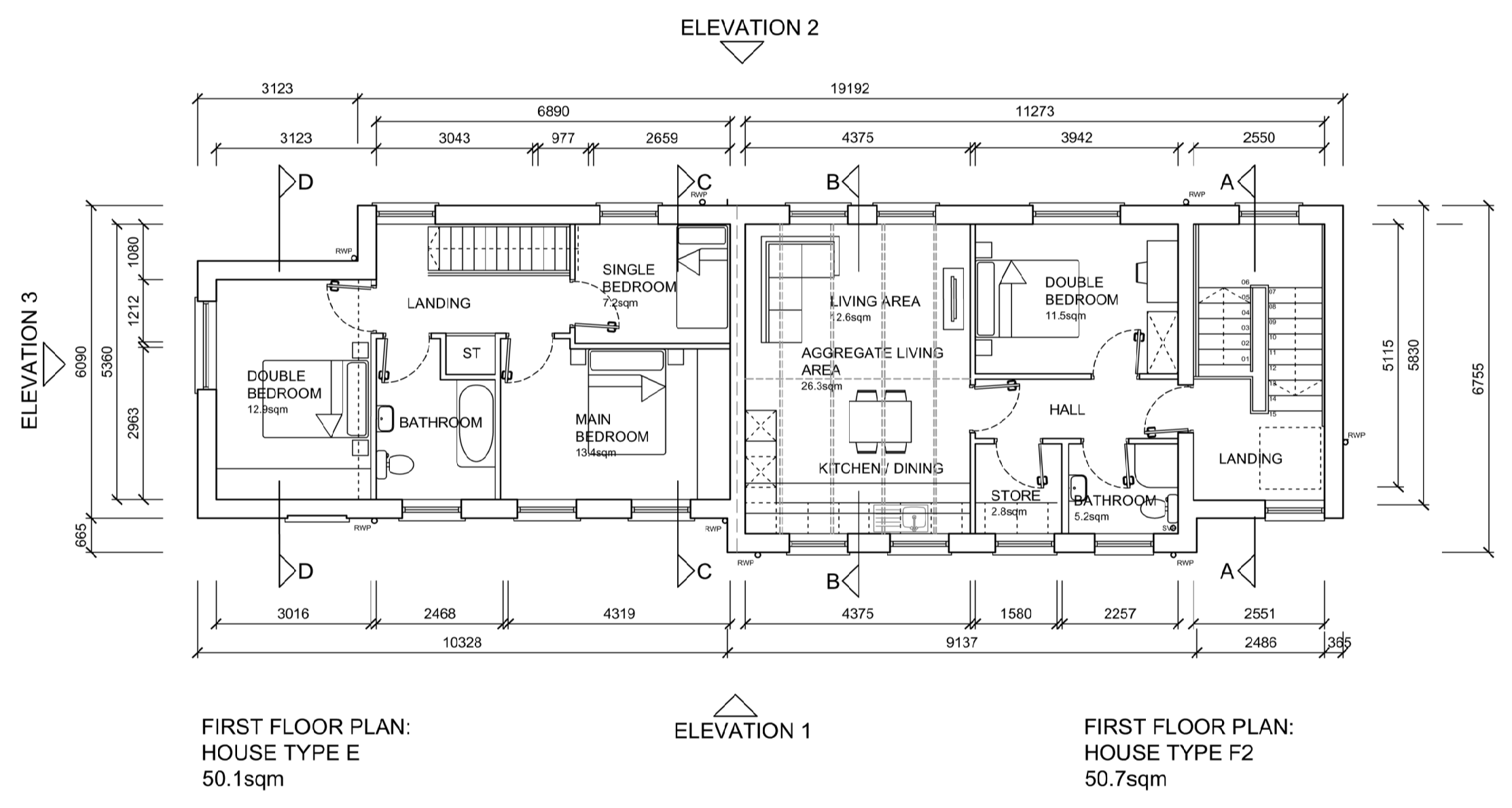
SECTION A-A

AREA SCHEDULE HOUSE TYPE E	GROSS FLOOR AREA (M ²)	MINIMUM MAIN LIVING ROOM AREA (M ²)	AGGREGATE LIVING AREA (M ²)	AGGREGATE BEDROOM AREA (M ²)	STORAGE AREA (M ²)
Quality Housing for Sustainable Communities, Target Floor Areas 3 Bed/ 5P House (2 Storey)	92	13	34	32	5
House Type E	97.9	15.2	35	34	5

AREA SCHEDULE HOUSE TYPE F	GROSS FLOOR AREA (M ²)	MINIMUM MAIN LIVING ROOM AREA (M ²)	AGGREGATE LIVING AREA (M ²)	AGGREGATE BEDROOM AREA (M ²)	STORAGE AREA (M ²)
Quality Housing for Sustainable Communities, Target Floor Areas 1 Bed/ 2P House (Apt)	45	11	23	11	3
House Type F1	48.4	13.3	23.1	11.9	3
House Type F2 (Excluding Stairwell)	50.7	12.6	26.3	11.5	3

Note - Stairwell to first floor duplex unit is 22.4 sqm (this is not included in unit breakdown above)

FINISHES SCHEDULE
1. SELECTED RENDER FINISH
2. ROOF FINISH - FIBRE CEMENT SLATE
3. SELECTED ALUCLAD DOORS
4. SELECTED ALUCLAD WINDOWS
5. TRIPLE GLAZED ALUCLAD WINDOWS - OPAQUE GLAZING
6. SELECTED BRICK FINISH
7. SELECTED ROUGH CAST FINISH
8. ALUMINIUM GUTTERS / FASCIAS / SOFFITS
9. SOIL AND VENT PIPES
10. SELECTED ALUCLAD DOORS - GLAZED



©Ordnance Survey Ireland/Govt. of Ireland 2021/OSi_NMA_141

REVISIONS

NO.	DATE	REV. BY	CHECKED	DESCRIPTION

Limerick City and County Council
LA Housing Construction + Maintenance
Merchants Quay
Limerick

PROJECT:
O'CONNOR PARK, ARDAGH,
COUNTY LIMERICK

STAGE:
2B - PART 8 PLANNING

DRAWING TITLE:
HOUSE TYPE E & F - BLOCK NO.4
GENERAL ARRANGEMENT

DATE: JUNE 2022	DRAWING NO:
SCALE: 1:100 @ A1	140
DRAWN: TG	SHEET SIZE: REVISION:
CHECKED: DS	A1 01
JOB NO: 19122	FILE NAME: -