

If you have a business story contact **Nick Rabbitts**
 email business@limerickleader.ie
 telephone 061 214596
 mobile 087 6615151
 Twitter @nick468official



BUSINESS LEADER

Enterprising leader in heart of community

THE LEADER QUESTIONNAIRE

As CEO of St Munchin's Community Centre, Kileely woman Linda Ledger has seen the facility go from strength to strength

TELL us a little about the St Munchin's Community Enterprise Centre.

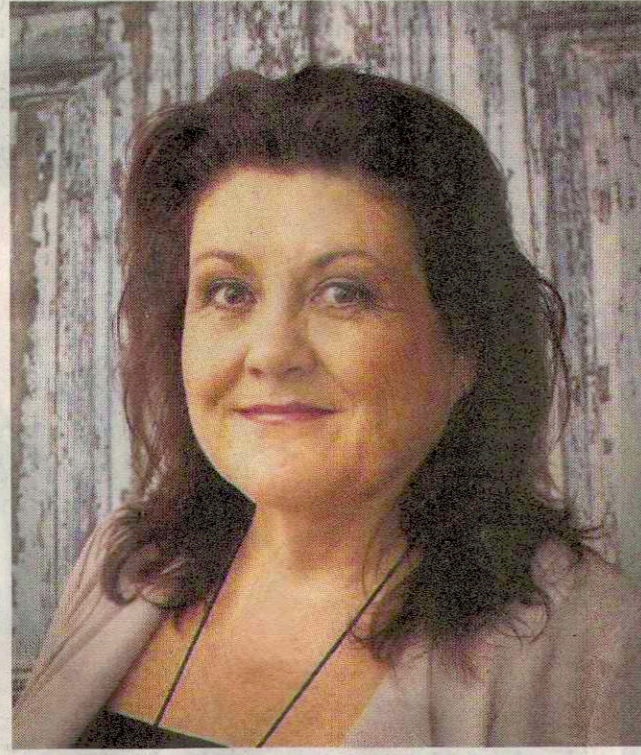
It's a community centre for the people with a bottom-up approach. We have 162 people working for us, over 90 volunteers. And people may not know this, but we have people working in 20 different locations across the city. We have people in Barnado's, St Mary's Cathedral, and soccer clubs across communities. The centre opened in 2005, celebrating our 15th anniversary next year. It's a real home from home. Our two main buildings are here in the school - we have a community cafe, we have lunches, meals on wheels, a community radio station, a flower shop, a photography studio, hairdressers, beauticians, chiropodist, and a lot of classes linked to the Limerick and Clare Education and Training Board. We are a social enterprise: everything we make goes back into the centre.

What does your role entail?

My role includes everything, from being on the pot-wash, to being in the allotments. I'm the chief executive, so I should be managing everything. But I believe in managing from within. I have a brilliant team around me. The secret of success is they are from all over Limerick. They are relatives, they are friends. Everybody comes in from all over Limerick, and our meals on wheels covers Limerick city and county.

Where were you born and raised?

I was born and raised in the



Linda Ledger has led the St Munchin's Community Centre in the heart of Kileely for almost a decade

house I live in now, in Kileely. I got my first mortgage when I was 16, my first job at the age of 12. I have no intention of ever going anywhere else. I love it, everything about Kileely and Limerick. I'm married to Leon and we have two kids Lisa, 27 and Laura, 23.

What is your educational background?

I went to St Leila's School, then to Ballynanty, which is now Thomond Primary School. I went there from second to sixth class. Then I went to St Mary's Secondary

School, where I remained until my inter-cert.

How did you get to where you are today?

I worked all summer jobs, but by the time you were 16, they bought in the law where you had to have a PPS number. So then I started working in Dunnes Stores at Jetland Shopping Centre.

That's where I learnt everything - how to buy and sell. I started working on the tills before moving to, then running the delicatessen. Then I did a stint in the cash-

office. I was training people as scanning tills came in. I learnt so much off Ben Dunne himself and his policies. I grew up in Dunnes. Sadly in 1997 I had a bad car crash, which left me 40% disabled.

What happened then?

From there, I joined the National Learning Network, before moving to St Munchin's Community Centre initially as a volunteer as the centre was being planned. I came in then full time as the centre manager.

What made you want to become the chief executive of St Munchin's Community Centre?

I actually didn't. I fell into it. When I was in the National Learning Network, I needed work experience. I started taking on little projects with the community centre, before I became known.

In business and life, who do you admire?

I admire Ben Dunne because he bought and sold and ran a very shrewd business. I'd also look up to JP McManus, because he is a shrewd businessman, but he'd have a very big heart.

Are you guided by any particular motto?

I love footprints in the sand. Some of Mother Theresa's quotes are also lovely.

Away from work, what are your pastimes and hobbies?

I love reading government policy. I am in the Greenhills gym. I need to swim for my health.

Tourism: Visitor attractions conference in city



The Association of Visitors Experiences & Attractions (AVEA) national conference took place in Thomond Park recently. Pictured at the event were Ruth Andrews, chief executive AVEA, Bobby Kerr, keynote speaker, Maeve Kelly, manager Adare Heritage Centre and Raymond Coyle, CEO Tayto Park

Public asked for suggestions on new Corporate Plan for Limerick

RYAN O'ROURKE

E: ryan.ourourke@limerickleader.ie

LIMERICK City and County Council are looking for input from members of the public on the creation of their new Corporate Plan.

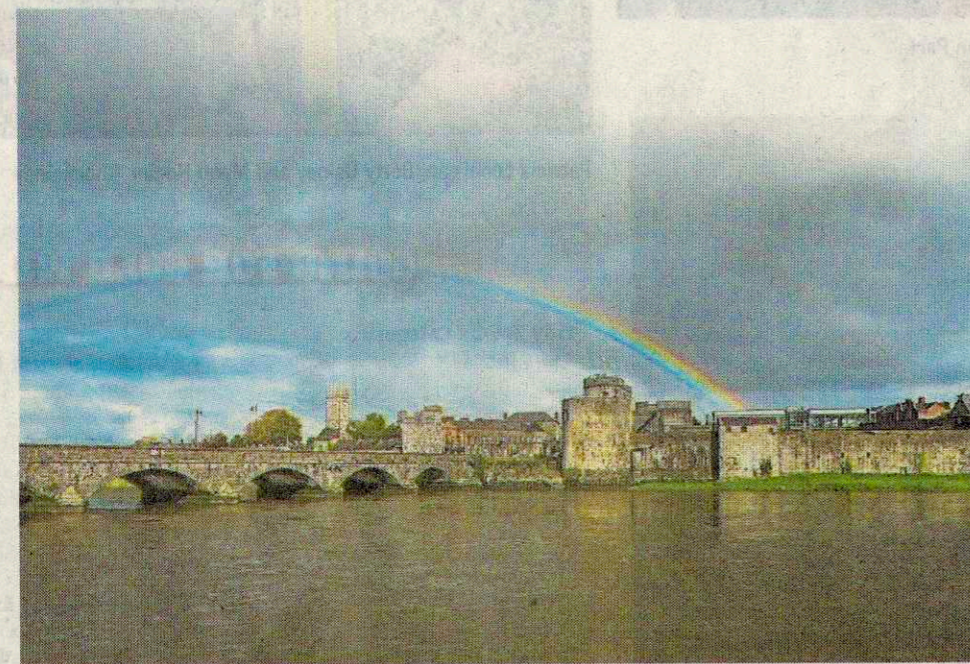
Under legislation Limerick City and County Council is obliged to prepare a Corporate Plan.

They are therefore calling on members of the public to give their opinions and suggestions on the plan.

Limerick City and County Council's Corporate Plan is a strategic framework over a five year period and is a central component of our business architecture, linking policy, organisational activity, governance and performance management, and actions.

Through the vision and leadership of the elected members, management and staff, Limerick City and County Council has put in place the building blocks for an unprecedented economic upturn that has transformed Limerick's economic, social and cultural profile over the past five years or so.

The focus is now turning to the next five-year period and Limerick City and County Council has prepared this new draft plan outlining its proposed mission statement, vision, core values, strategic



Will the corporate plan lead to a pot of gold at the end of the rainbow for Limerick

goals and objectives.

The new Corporate Plan seeks to build on the incredible economic renaissance that Limerick has undergone over the past number of years and sets out the core objectives and supporting strategies and outlines our vision and ambition for the next five years.

Council is using its new consultation portal 'My Point' for submissions, which will increase the level of public consultation and the quality of submissions thus allowing Limerick City and County Council to get more detailed feedback from the public and other groups.

More information about the project and how to make a submission is available on

<https://mypoint.limerick.ie>. Registration on My Point is required.

Alternatively people can send their written submissions to Draft Corporate Plan, Corporate Services, Limerick City and County Council, Merchant's Quay, Limerick V94 EH90.

Closing date for receipt of submissions is Friday, October 18 2019.

BUSINESS IN BRIEF

Shanagolden's ace Mace



Roches's Mace in Shanagolden is celebrating after winning a prestigious retail award.

The store triumphed at this year's National Q Mark awards, their second successive win at the annual awards' ceremony. Sinead Roche said: "The Q Mark is an integral part of our business's DNA and we are delighted that our standards are worthy of this prestigious national award."

Sinead Roche, MACE Shanagolden and her team with SAOIA



PUBLIC NOTICE

PLANNING & DEVELOPMENT ACTS 2000 (AS AMENDED)

PLANNING & DEVELOPMENT REGULATIONS 2001 (AS AMENDED)

PART 8 DEVELOPMENT

In accordance with Part XI of the Planning & Development Acts 2000 (as amended) and Part 8, Article 81 of the Planning and Development Regulations 2001 (as amended), notice is hereby given that Limerick City & County Council proposes to carry out the development described hereunder at the following site at 7A Greenhill Road, Co. Limerick.

The proposed development will consist of:

- (a) Provision of 3 no. residential two-storey terraced units comprising 2 no. 2 bedroom units and 1 no. 1 bedroom unit;
- (b) Provision of new on-street parallel parking comprising 3 no. spaces to Greenhill Road and modification of existing footpaths;
- (c) Hard landscaping including: front privacy strip and bin stores to dwellings;
- (d) Soft landscaping including planting and trees;
- (e) Replacement of / remedial works to existing boundaries with adjacent properties;
- (f) Provision of new water connections, a foul sewer connection, and a surface water drainage system;
- (g) Works to integrate with previously approved Part 8 planning submission on the adjoining site (ref: 18/8001);
- (g) All associated site works.

In accordance with S.I. 476, 2011, Section 250, Planning and Development (Amendment) (No. 3) Regulations, 2011, the Council has carried out a screening and it has been determined that an Appropriate Assessment is not required.

Limerick City & County Council has carried out an Environmental Impact Assessment (EIA) Screening Report and has determined that there is no real likelihood of significant effects on the environment. Accordingly, it has been determined that EIA is not required in respect of this proposed development. Nonetheless any person may within 4 weeks from the date of this notice apply to An Bord Pleanála for a screening determination. Plans and particulars of the proposed development will be available for inspection from 14th October 2019 up to and including the 12th November 2019 during office hours at the Customer Services Desk, Limerick City & County Council, Merchant's Quay, Limerick, V94 EH90 and online at <https://mypoint.limerick.ie>.

Submissions and observations in relation to the proposed development, dealing with the proper planning and sustainable development of the area in which the development would be situated, will be accepted up to 5 p.m. on the 27th November 2019 in writing to Design & Delivery Services, Limerick City & County Council, Merchant's Quay, Limerick, V94 EH90 or online via <https://mypoint.limerick.ie>.

Note: Only submissions made in the above manner will be considered as valid submissions for the purposes of the Chief Executive's Report that will be presented to Council.

Signed: Joe Delaney - Director of Service, Limerick City & County Council, Merchant's Quay, Limerick

PLANNING & DEVELOPMENT ACTS 2000 (AS AMENDED)

PLANNING & DEVELOPMENT REGULATIONS 2001 (AS AMENDED)

PART 8 DEVELOPMENT

In accordance with Part XI of the Planning & Development Acts 2000 (as amended) and Part 8, Article 81 of the Planning and Development Regulations 2001 (as amended), notice is hereby given that Limerick City & County Council proposes to carry out the development described hereunder at the following site at Brookhaven, Montpelier, County Limerick.

The proposed development will consist of:

- (a) Provision of 12 no. residential units comprising: 3 no. single storey 2 bedroom dwellings; 4 no. two storey 2 bedroom dwellings; 5 no. two storey 3 bedroom dwellings;
- (b) Hard landscaping including roads, footpaths, parking, garden walls, and public lighting;
- (c) Soft landscaping including lawns, trees; and hedgerows;
- (d) Provision of new water connections, a foul sewer connection, and a surface water drainage system;
- (e) All associated site works.

In accordance with S.I. 476, 2011, Section 250, Planning and Development (Amendment) (No. 3) Regulations, 2011, the Council has carried out a screening and it has been determined that an Appropriate Assessment is not required.

Limerick City & County Council has carried out an Environmental Impact Assessment (EIA) Screening Report and has determined that there is no real likelihood of significant effects on the environment. Accordingly, it has been determined that EIA is not required in respect of this proposed development. Nonetheless any person may within 4 weeks from the date of this notice apply to An Bord Pleanála for a screening determination.

Plans and particulars of the proposed development will be available for inspection from 14th October 2019 up to and including the 12th November 2019 during office hours at the Customer Services Desk, Limerick City & County Council, Merchant's Quay, Limerick, V94 EH90, and online at <https://mypoint.limerick.ie>.

Submissions and observations in relation to the proposed development, dealing with the proper planning and sustainable development of the area in which the development would be situated, will be accepted up to 5 p.m. on the 27th November 2019 in writing to Design & Delivery Services, Limerick City & County Council, Merchant's Quay, Limerick, V94 EH90 or online via <https://mypoint.limerick.ie>.

Note: Only submissions made in the above manner will be considered as valid submissions for the purposes of the Chief Executive's Report that will be presented to Council.

Signed: Joe Delaney - Director of Service, Limerick City & County Council, Merchant's Quay, Limerick

LOCAL ELECTIONS (DISCLOSURE OF DONATIONS & EXPENDITURE) ACT 1999, AS AMENDED.

The Local Elections (Disclosure of Donations and Expenditure) Act 1999, as amended requires Designated Persons, National Agents and Candidates at the Local Elections held on 24th May, 2019 to submit a Statement of Donations and Election Expenses incurred in relation to the Local Elections.

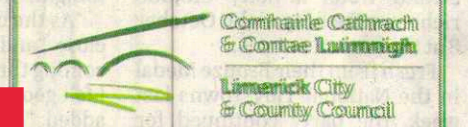
Notice is hereby given that Statements of Donations and Election Expenses are now available for inspection at the offices of Limerick City and County Council, Corporate Headquarters, Merchant's Quay, Limerick between the hours of 9.00am - 5.00pm each day on which the offices are open for business.

Copies of statements furnished or extracts thereof, may also be viewed at www.limerick.ie.

The following Candidates did not furnish statements in accordance with the Act:

Surname	Forename	Party	Local Electoral Area
Hannan	Noel	Non Party	Limerick City East
McCarthy	Trevor	Social Democrats	Cappamore-Killmallock
Morrissey	Jamie	Non Party	Limerick City West
Putt	Mike	Direct Democracy Ireland	Adare-Rathkeale

James Clune, A/Senior Executive Officer, Corporate Services, Governance and Customer Services.



PUBLIC NOTICE

TAKING IN CHARGE OF ESTATES DECLARATION OF ROADS TO BE PUBLIC ROADS

In accordance with Section 180 of the Planning and Development Act 2000 (as amended), Limerick City and County Council hereby gives notice of its intention to consider the making of an order under Section 11 of the Roads Act 1993 to declare the roads set out in the schedule hereunder to be public roads.

Maps showing these roads will be available for public inspection in the Planning and Environmental Services Section, Dooradoyle, Co. Limerick between the hours of 9.00 a.m. to 5.00 p.m., Monday to Friday, (excluding public holidays) during the period from Friday 11th October, 2019 to Friday 8th November, 2019.

Any objections or representations in relation to the proposed take over made in writing to the Director of Services, Planning and Environmental Services, Dooradoyle, Co. Limerick before 5.00 p.m. on Friday 22nd November, 2019 will be considered prior to making any declarations.

Housing Estate Roads

Beechfield, Cherryfield, Oakfield, Thornfield, Monaleen, Castletroy.

Stephane Duclot, A/Senior Planner, Planning and Environmental Services

ROAD WORKS SPEED LIMIT ORDER N69 ASKEATON BYPASS

Notice is hereby given that the Chief Executive, Limerick City & County Council, in exercise of the powers vested in him under Section 10 of the Road Traffic Act 2004, and in the interests of Road Safety, has made an Order as follows:

On the N69 Askeaton Bypass, between a point at the junction of the N69 National Road and the L250 local road on the eastern side of Askeaton town (E:553504, N:650624) to a point at the junction of the N69 National Road and R518 Regional Road on the western side of Askeaton Town (E:533069, N:650469), a speed limit of 60km/h shall apply for a period from 3rd October 2019 to 24th December 2019 inclusive.

Representations in relation to this Order may be made in writing to the Roads Engineer, Adare/Rathkeale Municipal District, Aras Sean Finn, New Line, Rathkeale, Co. Limerick.

LIMERICK CITY AND COUNTY COUNCIL ROAD TRAFFIC SPECIAL SPEED LIMIT BYE-LAWS 2019

Notice is hereby given that Limerick City and County Council has, in exercise of its powers under Section 9 of the Road Traffic Act, 2004 (no. 44 of 2004), as amended by section 86 of the Road Traffic Act 2010 (No. 25 of 2010), and Section 22 of the Road Traffic Act 2016 (No. 21 of 2016), at its September meeting, made the above mentioned Bye-Laws, which will come into effect on the 1st November 2019.

The Bye-Laws are available for inspection during normal working hours at the following locations:

- Limerick City and County Council Office, Merchant's Quay, Limerick
- Limerick City and County Council Office, Dooradoyle Road, Dooradoyle, Co. Limerick

A copy of the Bye-Laws have also been placed on the Council's website www.limerick.ie/council and www.speedlimits.ie

NOTICE OF THE PASSING OF A RESOLUTION TO VARY THE RATE OF LOCAL PROPERTY TAX

Limerick City and County Council

In pursuance of the provisions of section 20 of the FINANCE (LOCAL PROPERTY TAX) ACT 2012 (as amended), I the undersigned, hereby notify the Minister for Housing, Planning and Local Government of the passing of a resolution at a meeting of the above mentioned local authority on Monday 23rd September 2019 to the effect that the basic rate of local property tax should stand varied upwards by fifteen per cent (15%) for the year 2020 in respect of relevant residential properties situated in the local authority's administrative area.

Signed: Dr. Pat Daly
 Chief Executive

Dated: 24th September 2019



DO YOU WANT TO HEAR ABOUT AGE FRIENDLY LIMERICK AND WHAT WE ARE ALL ABOUT?

Committee, key stakeholders such as An Garda Síochána, HSE, Clare and Limerick Education and Training Board, Paul Partnership and University of Limerick are working collaboratively to successfully implement the Age Friendly strategy and make Limerick "a place where more and more older people can stay living in their own homes and communities, lead healthy and active lives, get to where they want to go, when they want to go, and are valued contributors to the lives of their communities."

We would like you to join us at our information session on **Wednesday 16th October, 2019 at the Woodlands House Hotel, Adare from 11.30 am - 1.00pm (followed by light lunch)**
 Key Note speaker on the day is **Ms. Catherine McGuigan, Chief Officer, Age Friendly Ireland**

To register your attendance please email aisling.walsh@limerick.ie or jillian.robinson@limerick.ie
 Before 1.00pm on Fri 11th October, 2019
 For more information: Call: Aisling 061 557533 or Jillian 061 557541

