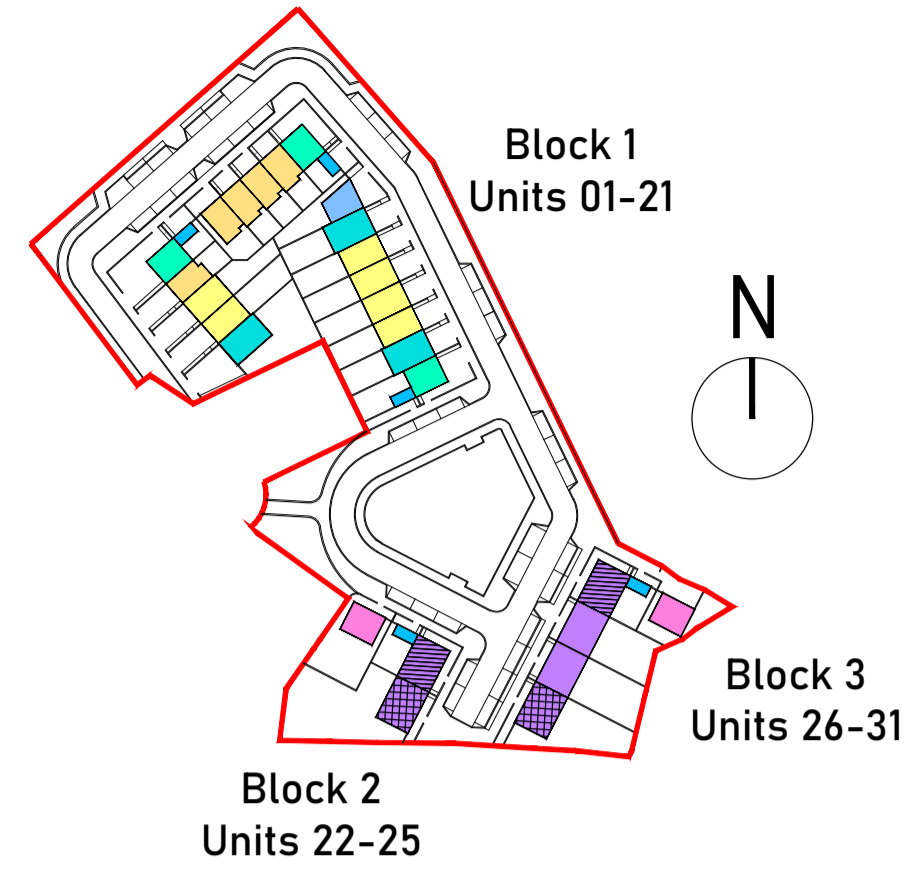


UNIT TYPE_B

2B - 4P - 2S / HOUSE

Room	Proposed Unit		Equivalent Dept Guidelines		Comparison of Floor Area %
	Actual Width (m)	Actual Area (sqm)	Min Width (m)	Min Area (sqm)	
Bedroom 1	3.6	13.2	2.8	13.0	+1.5 %
Bedroom 2	2.85	11.6	2.8	11.4	+1.7 %
Bedroom 3					
Bedroom 4					
Living Room	3.6	13.1	3.6	13.0	+0.8 %
Total Storage Area		4.0		4.0	+0.0 %
Total Living-Kitchen-Dining Area		30.0		30.0	+0.0 %
Total Bedroom Area		24.7		25.0	-1.2 %
Gross Internal Area		87.9		80.0	+9.8 %

Key Plan



Schedule of Units

Block Number	Unit Number	House/Apt	Unit Type	Description	GFA Area (sqm)
Block 1	1	House	UT - A	4B - 7P - 3S	131.2
	2	House	UT - A	3B - 5P - 3S	112.2
	3	House	UT - A	3B - 5P - 3S	112.2
	4	House	UT - B	2B - 4P - 2S	87.9
	5	Apt	UT - C	1B - 2P - 1S	47.2
	6	Apt	UT - D	1B - 2P - 2S	65.0
	7	House	UT - B	2B - 4P - 2S	87.9
	8	House	UT - B	2B - 4P - 2S	87.9
	9	House	UT - B	2B - 4P - 2S	87.9
	10	House	UT - B	2B - 4P - 2S	87.9
	11	Apt	UT - C	1B - 2P - 1S	47.2
Block 2	12	Apt	UT - D	1B - 2P - 2S	65.0
	13	House	UT - E	2B - 4P - 2S	87.4
	14	House	UT - M	4B - 7P - 3S	131.2
	15	House	UT - A	3B - 5P - 3S	112.2
	16	House	UT - A	3B - 5P - 3S	112.2
	17	House	UT - A	3B - 5P - 3S	112.2
	18	House	UT - A	3B - 5P - 3S	112.2
	19	House	UT - M	4B - 7P - 3S	131.2
	20	Apt	UT - C	1B - 2P - 1S	47.2
	21	Apt	UT - D	1B - 2P - 2S	65.0
Block 3	22	House	UT - G	1B - 2P - 1S	47.3
	23	House	UT - G	2B - 4P - 1S	75.3
	24	Apt	UT - D	1B - 2P - 2S	65.0
	25	House	UT - G	2B - 4P - 1S	75.3
	26	House	UT - F1	2B - 4P - 1S	75.3
27	House	UT - F1	2B - 4P - 1S	75.3	
28	House	UT - F1	2B - 4P - 1S	75.3	
29	House	UT - F2	2B - 4P - 1S	75.3	
30	Apt	UT - G	1B - 2P - 2S	65.0	
31	House	UT - G	1B - 2P - 1S	47.3	

Development Summary

House Type	Description	No. of	%
UT - A	3B - 5P - 3S	4	19.35
UT - B	2B - 4P - 2S	5	16.12
UT - C	1B - 2P - 1S	3	7.67
UT - D	1B - 2P - 2S	5	16.12
UT - E	2B - 4P - 2S	1	3.22
UT - F	2B - 4P - 1S	6	19.35
UT - G	1B - 2P - 1S	2	6.50
UT - H	4B - 7P - 3S	3	9.47
		31	100.00

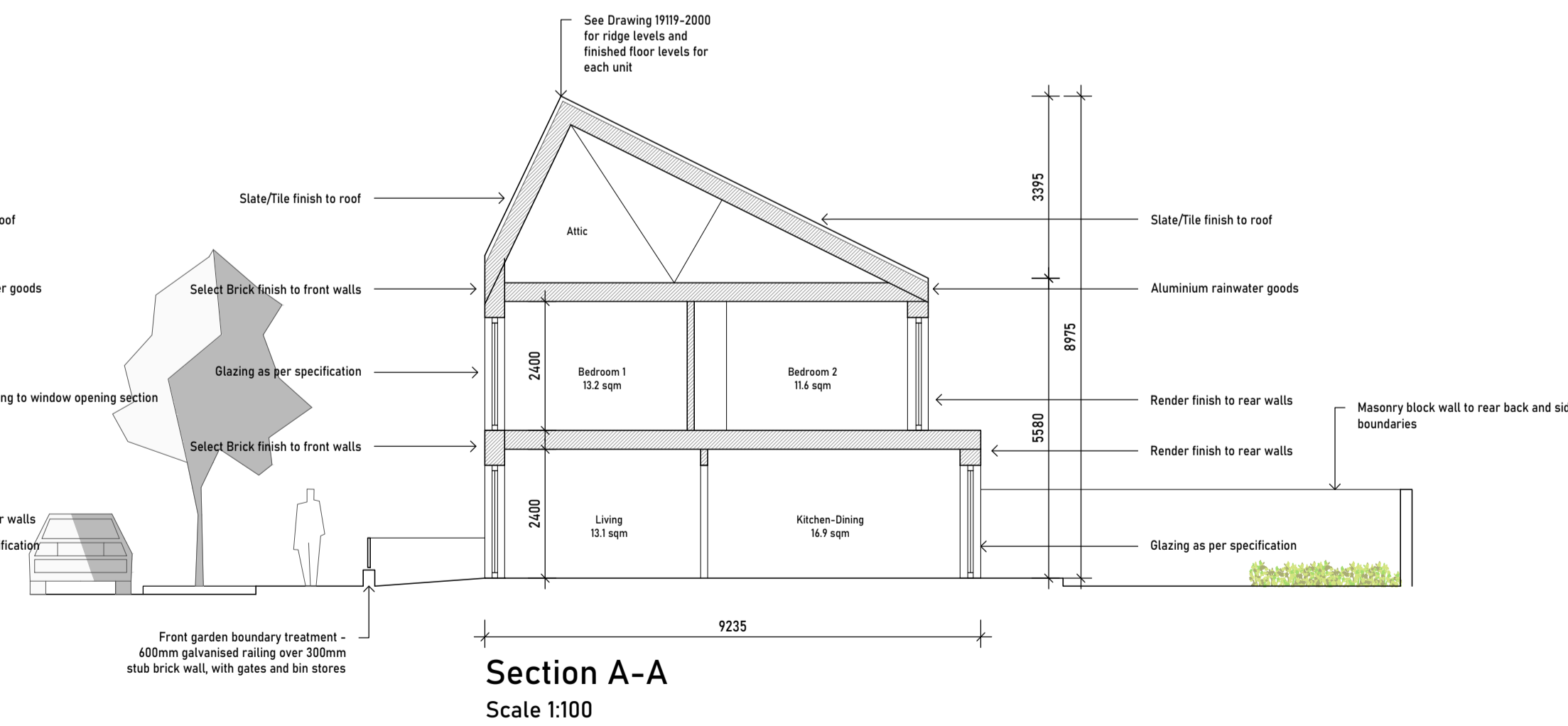
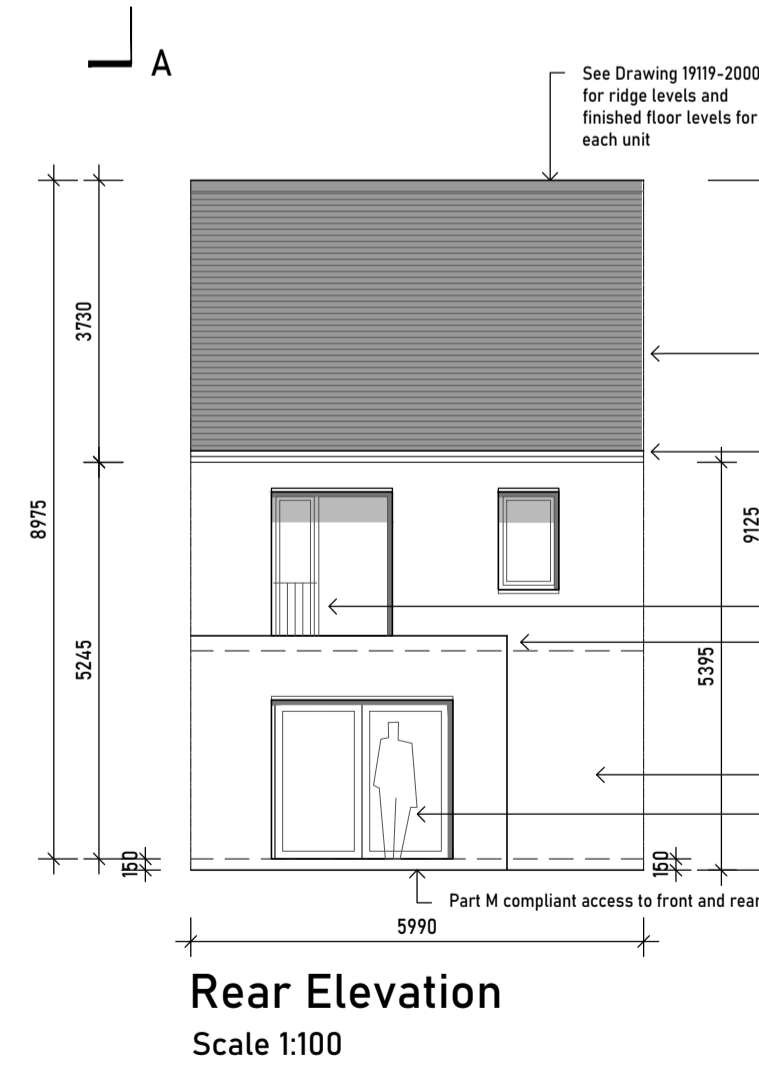
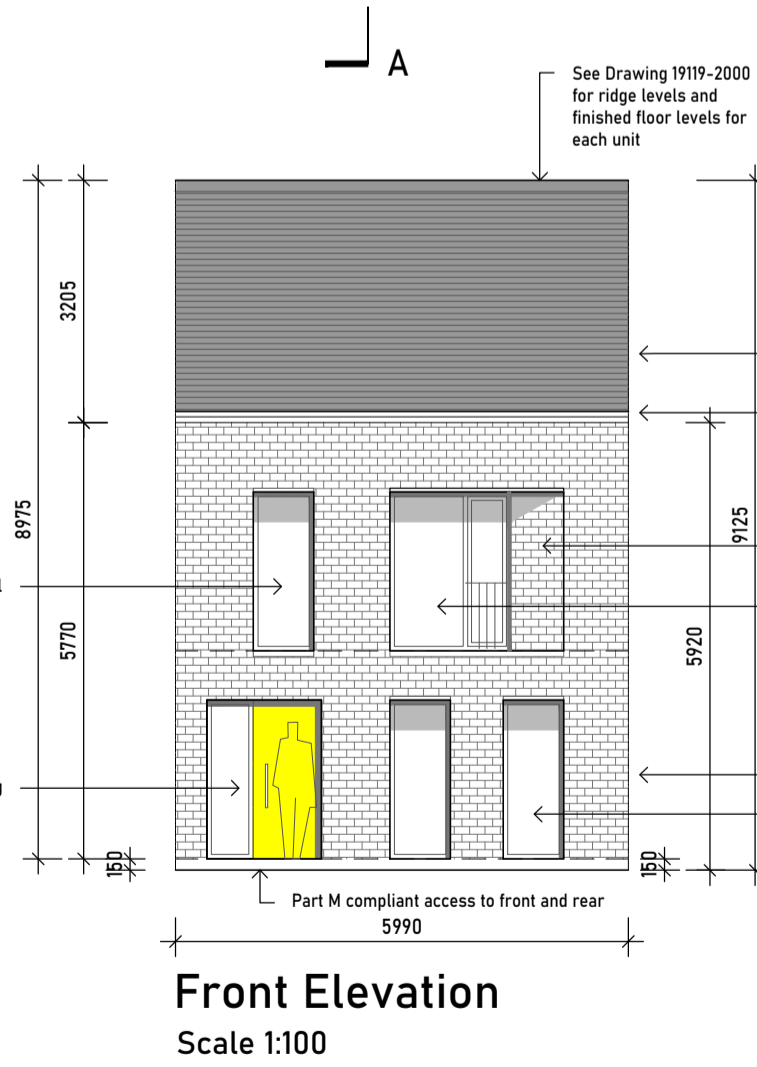
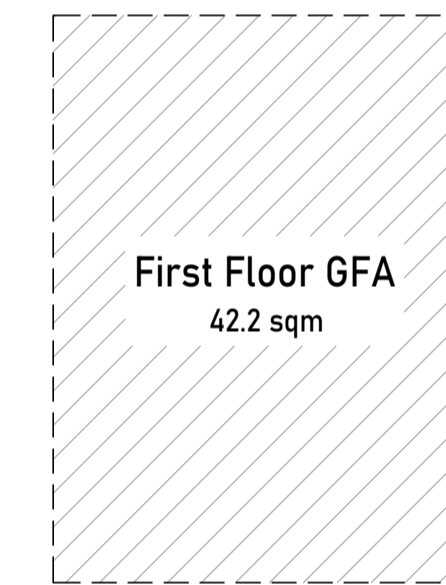
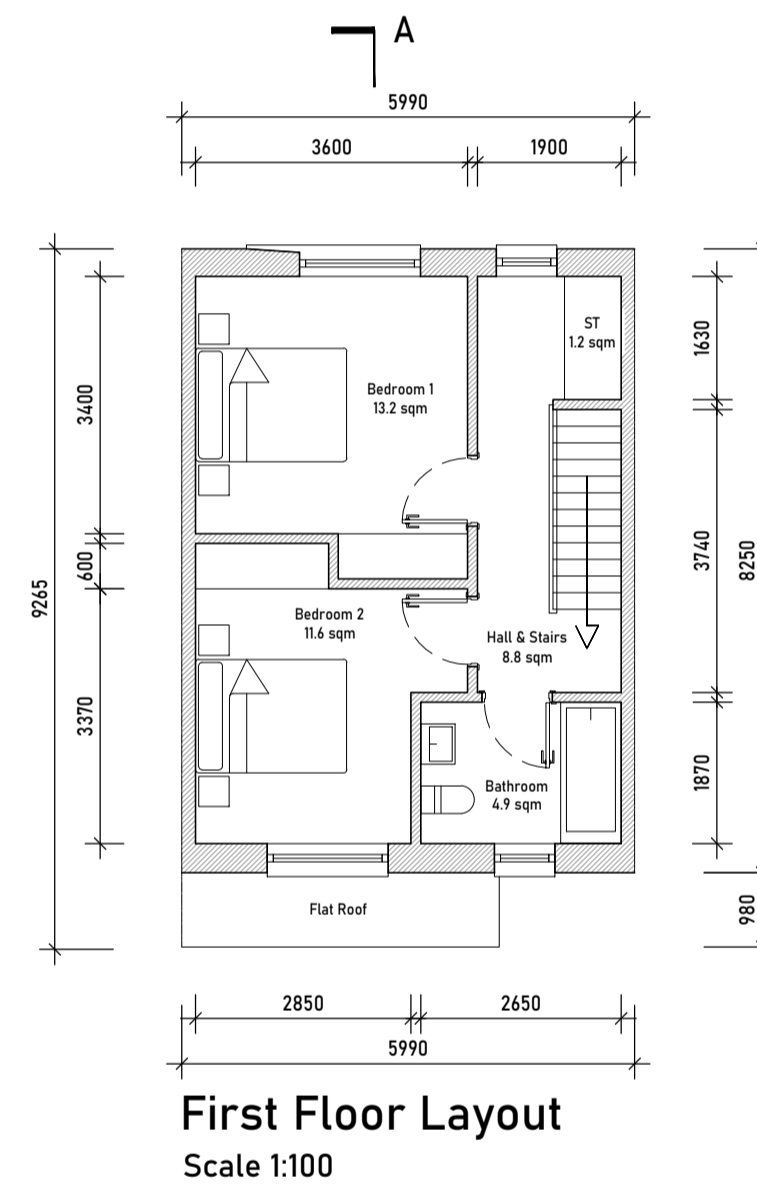
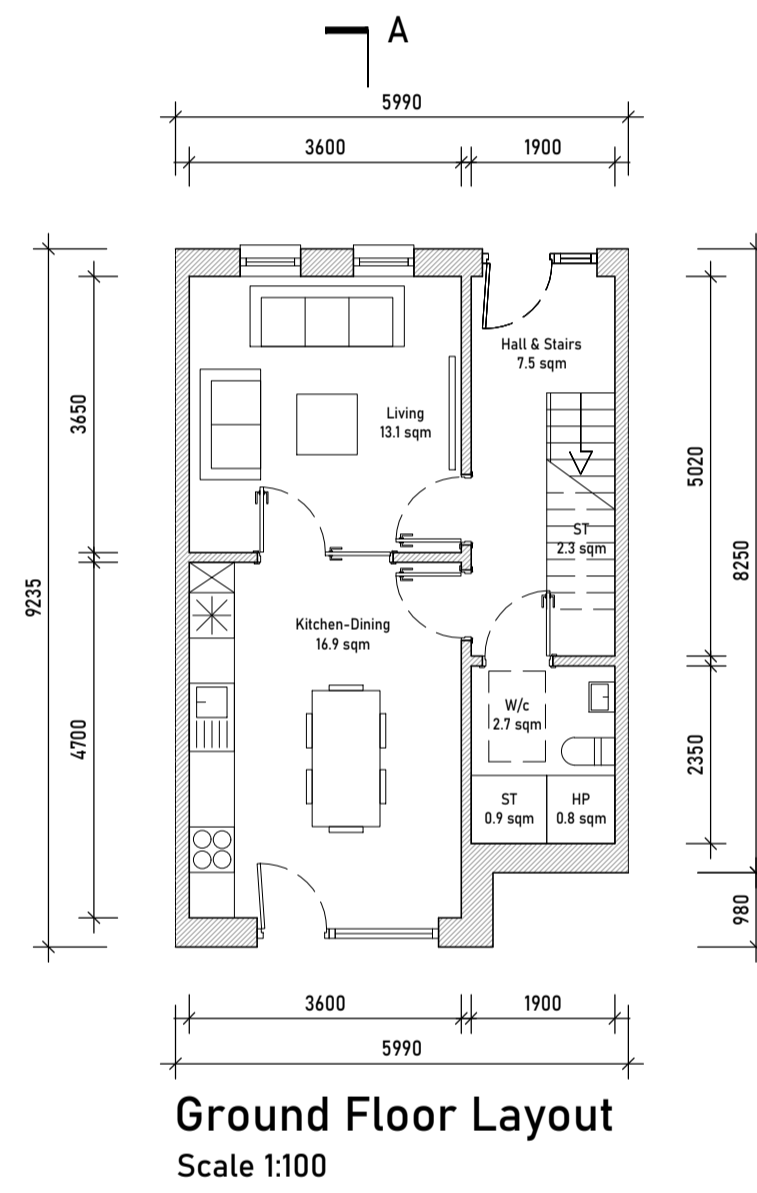
Development Summary	
Site Area	12 ha
No. of Units	31
Density	25.8 units/ha
No. of Bed Spaces	119 (Avg 3.8 per unit)
No. of Parking Spaces	51 (37 on-street spaces)
Public Open Space Provision	15% of site area

COPYRIGHT:
The design and details shown on this drawing are applicable to their project only and may not be reproduced in whole or in part or be used for any other project or purpose without the written permission of Limerick City & County Council with whom copyright resides.
DO NOT SCALE from this drawing. Use figured dimensions.
Contractor to check all dimensions on site prior to commencement of works. Any discrepancies are to be referred to the ARCHITECT.

NOTES:

Note 1:
Please refer to the Site Layout and Contiguous Site Sectional-Elevation drawings for F.F.L.'s and Ridge Levels associated with each unit.

Typical F.F.L.'s of +0.15m above ground level for ground floor layouts and +2.90m above ground level for second floor layouts apply.



REVISIONS

NO.	DATE	REV. BY	CHKD	DESCRIPTION

DATE: Nov 14th 2022
 REV. BY: BR
 CHKD: -
 JOB NO.: 19119
 FILE NAME: -

LIMERICK CITY & COUNTY COUNCIL
 LA HOUSING CONSTRUCTION & MAINTENANCE
 DOORADOYLE LIMERICK
 t: +353 61 556000
 e: customerservices@limerick.ie

PROJECT:
 31 No. Housing Units at Sycamore Crescent, Gortboy, Newcastle West, Co.Limerick.

STAGE:
PART 8

DRAWING TITLE:
 Proposed Unit Type B
 General Arrangement Drawings

DATE: Nov 14th 2022
 SCALE: 1:100
 DRAWN: BR
 CHKD: -
 JOB NO.: 19119
 FILE NAME: -

DRAWING NO:
19119-3001
 SHEET SIZE: REVISION:
A1 -