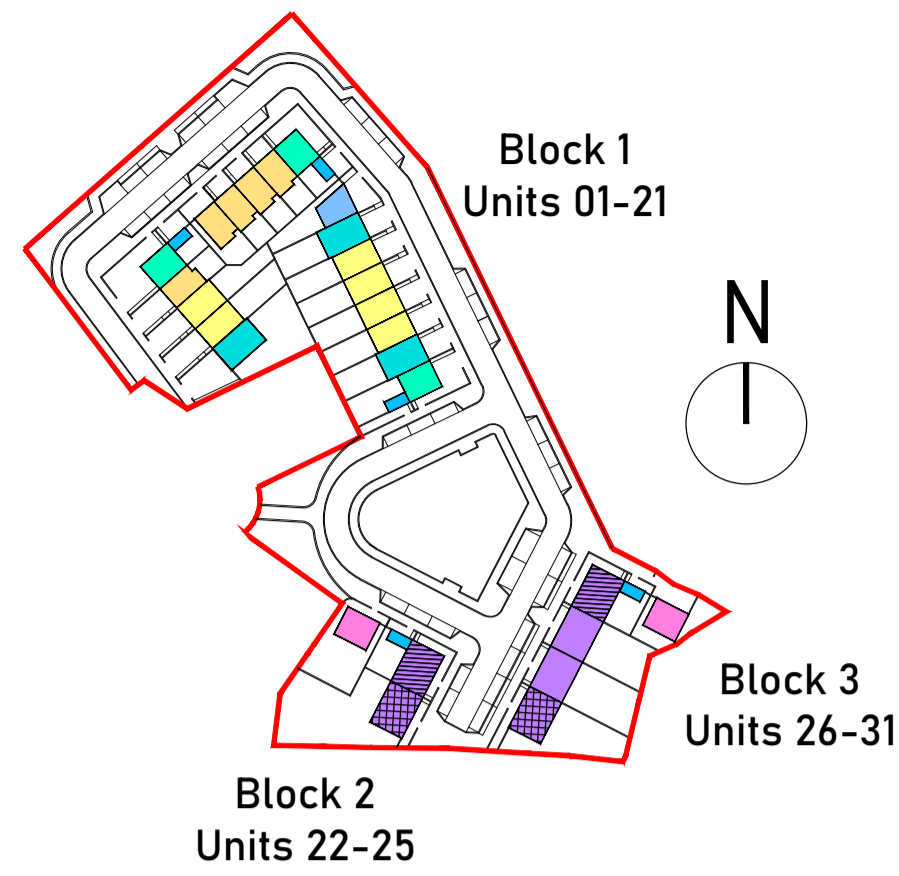


UNIT TYPE_E

2B - 4P - 2S / HOUSE

| Relevant Area | Proposed Unit | | Equivalent Dept Guidelines | | Comparison of Floor Area % |
|----------------------------------|------------------|-------------------|----------------------------|----------------|----------------------------|
| | Actual Width (m) | Actual Area (sqm) | Min Width (m) | Min Area (sqm) | |
| Bedroom 1 | 3.15 | 13.5 | 2.8 | 13.0 | +3.8 % |
| Bedroom 2 | 2.87 | 11.5 | 2.8 | 11.4 | +0.9 % |
| Bedroom 3 | | | | | |
| Bedroom 4 | | | | | |
| Living Room | 3.6 | 13.0 | 3.6 | 13.0 | +0.0 % |
| Total Storage Area | | 5.0 | | 4.0 | +22.2 % |
| Total Living-Kitchen-Dining Area | | 30.0 | | 30.0 | +0.0 % |
| Total Bedroom Area | | 25.0 | | 25.0 | +0.0 % |
| Gross Internal Area | | 87.4 | | 80.0 | +8.8 % |

Key Plan



Schedule of Units

| Block | Unit Number | House/Apt | Unit Type | Description | GFA Area (sqm) | |
|---------|-------------|-----------|-----------|--------------|----------------|------|
| Block 1 | 1 | House | UT - H | 4B - 7P - 3S | 131.2 | |
| | 2 | House | UT - A | 3B - 5P - 3S | 112.2 | |
| | 3 | House | UT - A | 3B - 5P - 3S | 112.2 | |
| | 4 | House | UT - B | 2B - 4P - 2S | 87.9 | |
| | 5 | Apt | UT - C | 1B - 2P - 1S | 47.2 | |
| | 6 | Apt | UT - D | 1B - 2P - 2S | 65.0 | |
| | 7 | House | UT - B | 2B - 4P - 2S | 87.9 | |
| | 8 | House | UT - B | 2B - 4P - 2S | 87.9 | |
| | 9 | House | UT - B | 2B - 4P - 2S | 87.9 | |
| | 10 | House | UT - B | 2B - 4P - 2S | 87.9 | |
| | 11 | Apt | UT - C | 1B - 2P - 1S | 47.2 | |
| Block 2 | 22 | House | UT - G | 1B - 2P - 1S | 47.3 | |
| | 23 | House | UT - A | 2B - 4P - 1S | 75.3 | |
| | 24 | Apt | UT - D | 1B - 2P - 2S | 65.0 | |
| | 25 | House | UT - F | 2B - 4P - 1S | 75.3 | |
| | Block 3 | 26 | House | UT - F | 2B - 4P - 1S | 75.3 |
| | | 27 | House | UT - F1 | 2B - 4P - 1S | 75.3 |
| 28 | | House | UT - F1 | 2B - 4P - 1S | 75.3 | |
| 29 | | House | UT - F2 | 2B - 4P - 1S | 75.3 | |
| 30 | | Apt | UT - G | 1B - 2P - 2S | 65.0 | |
| 31 | | House | UT - G | 1B - 2P - 1S | 47.3 | |

Development Summary

| House Type | Description | No. of | % |
|------------|--------------|--------|--------|
| UT - A | 3B - 5P - 3S | 4 | 19.35 |
| UT - B | 2B - 4P - 2S | 5 | 16.12 |
| UT - C | 1B - 2P - 1S | 3 | 7.67 |
| UT - D | 1B - 2P - 2S | 5 | 16.12 |
| UT - E | 2B - 4P - 2S | 1 | 3.22 |
| UT - F | 2B - 4P - 1S | 6 | 19.35 |
| UT - G | 1B - 2P - 1S | 2 | 6.50 |
| UT - H | 4B - 7P - 3S | 3 | 9.47 |
| | | 31 | 100.00 |

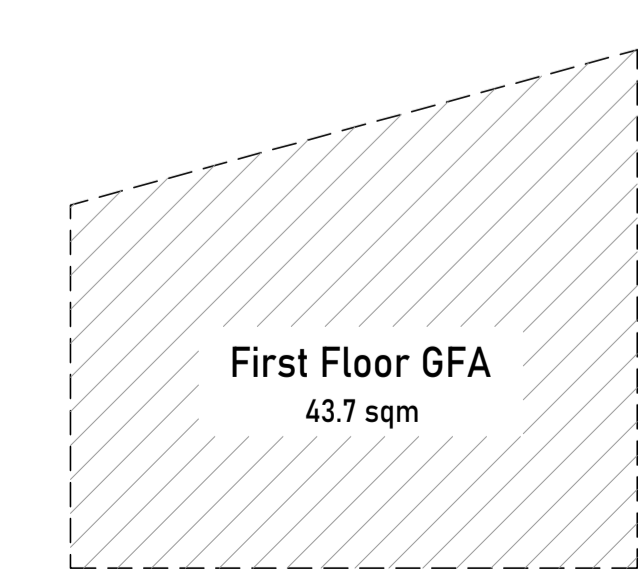
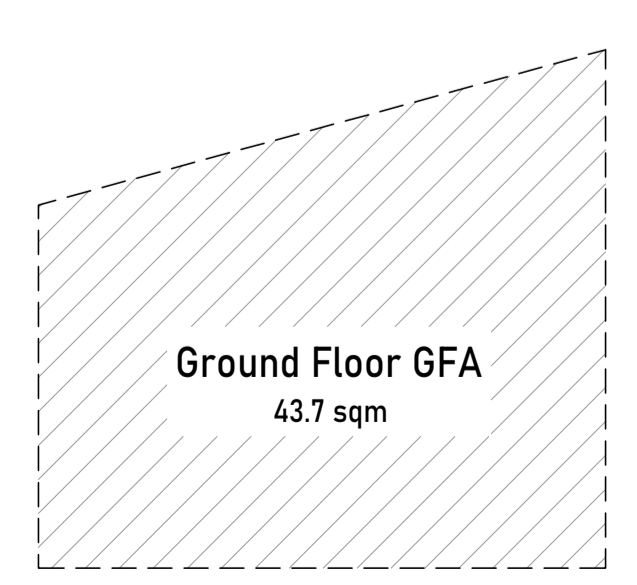
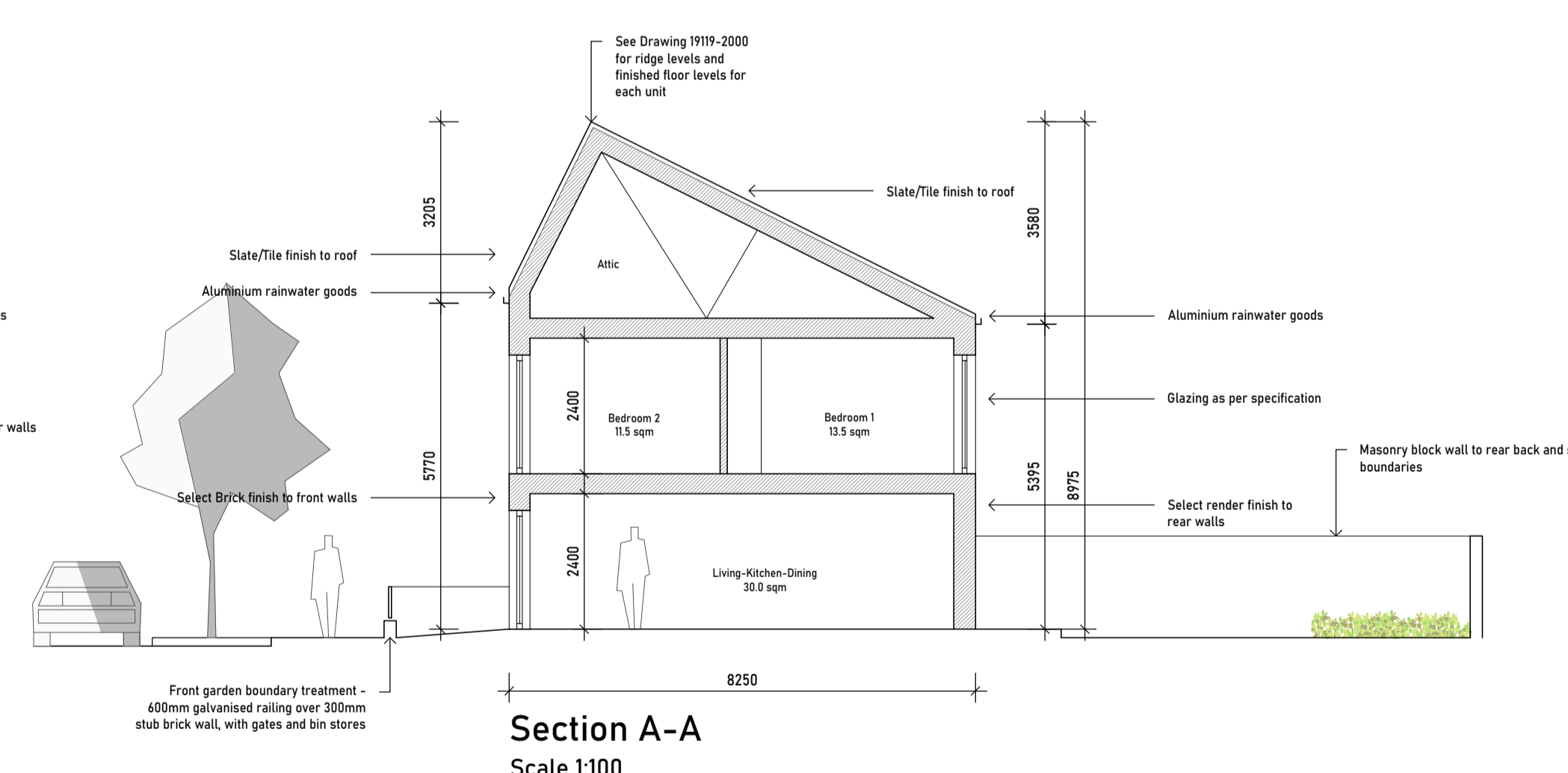
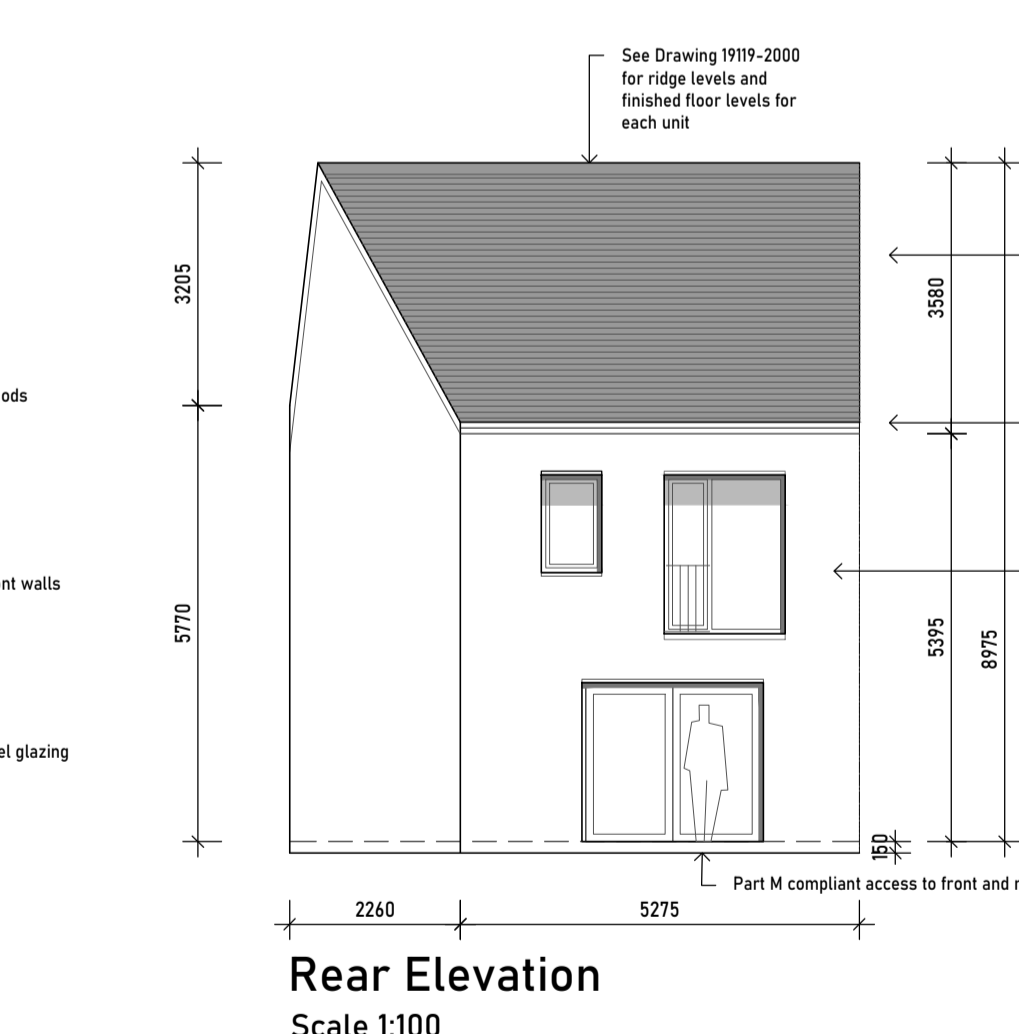
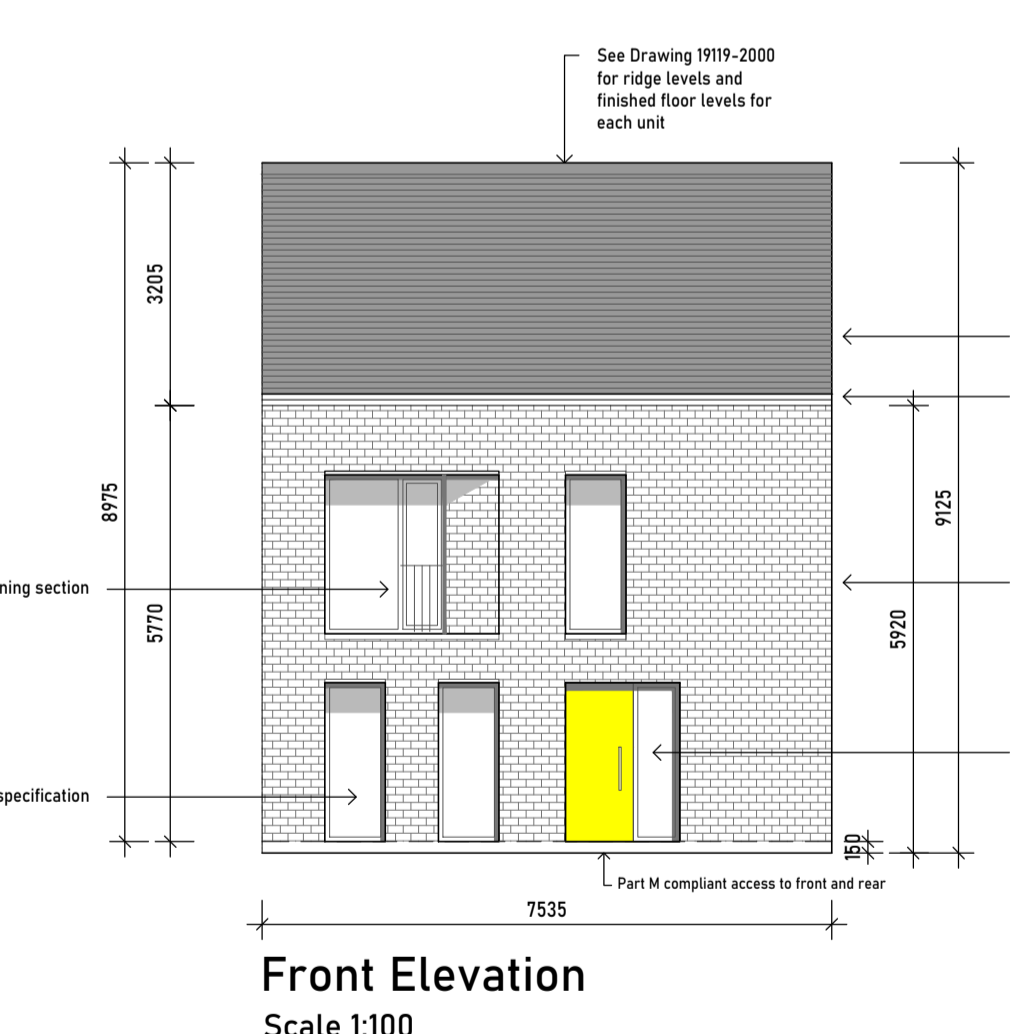
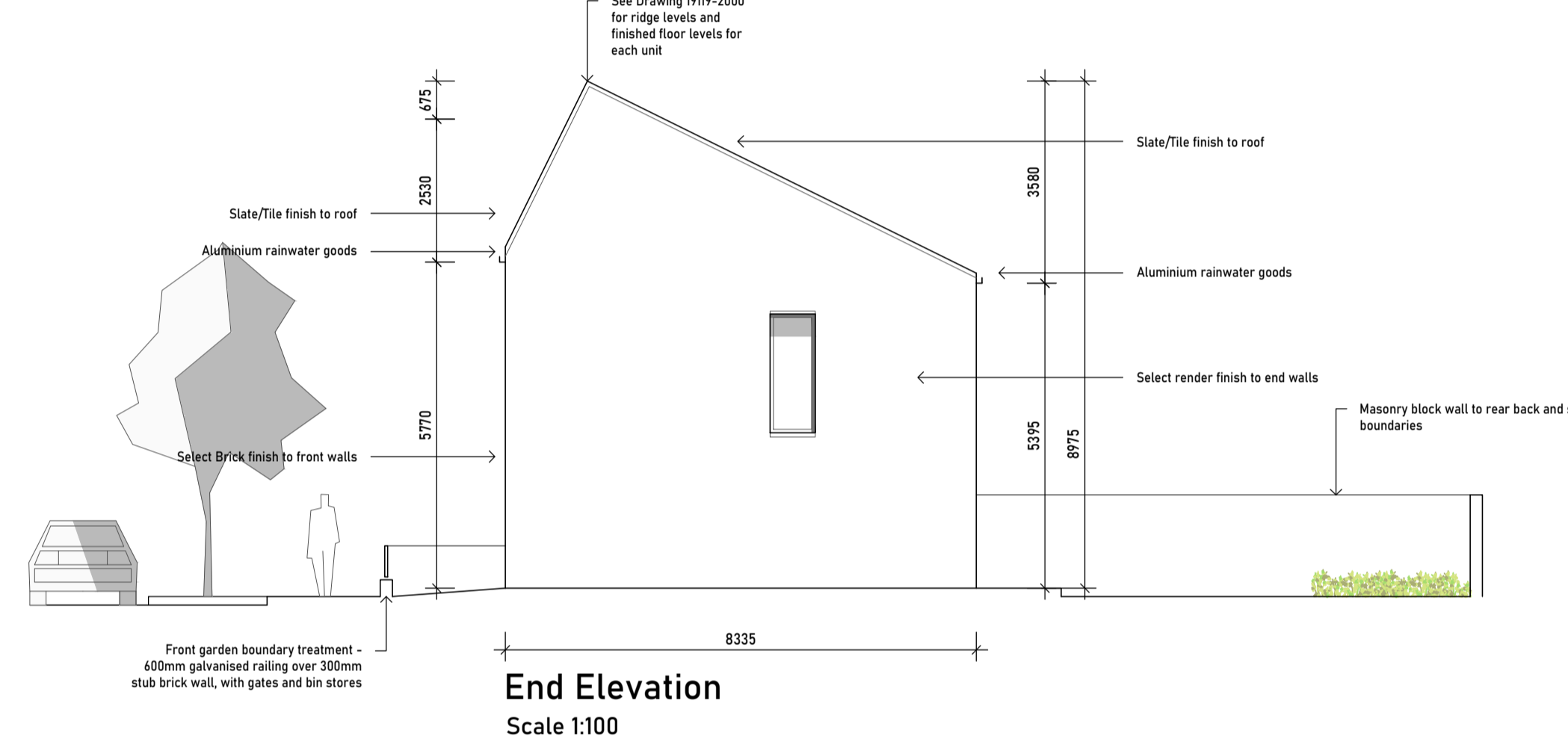
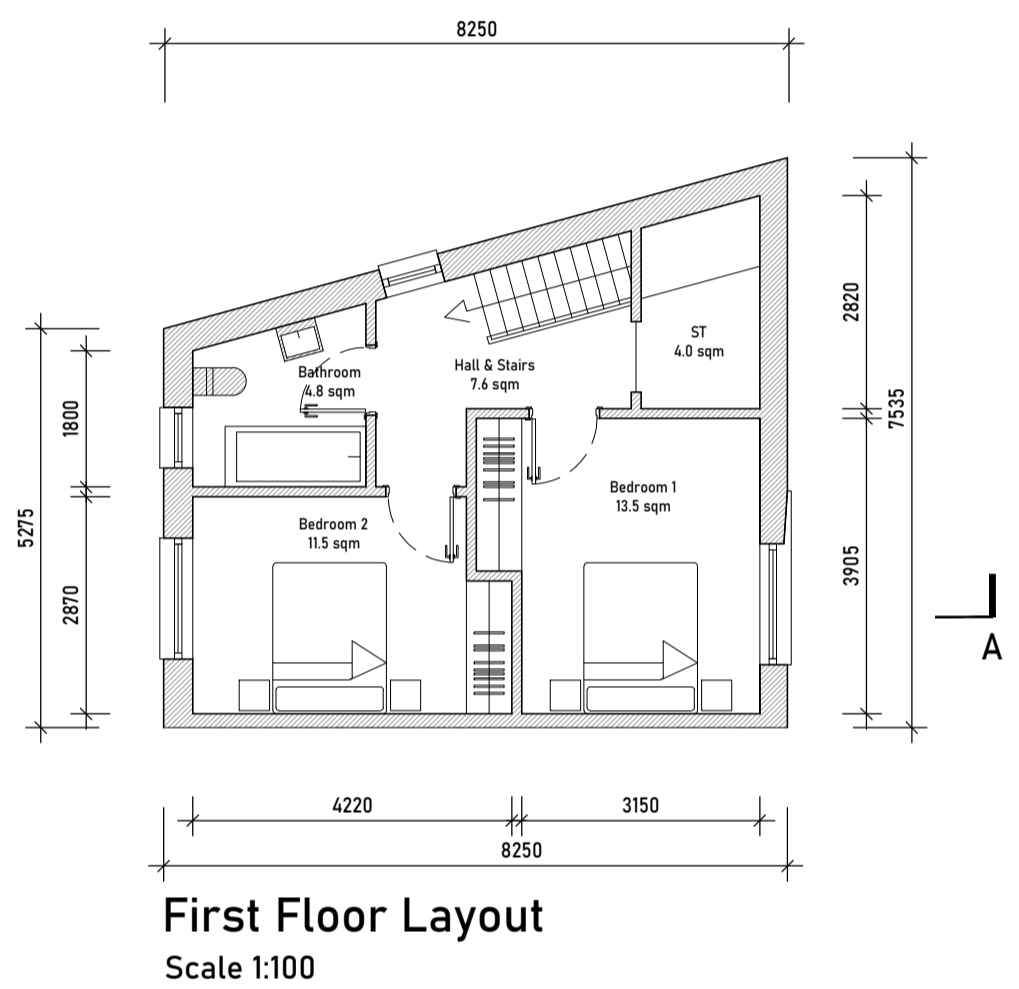
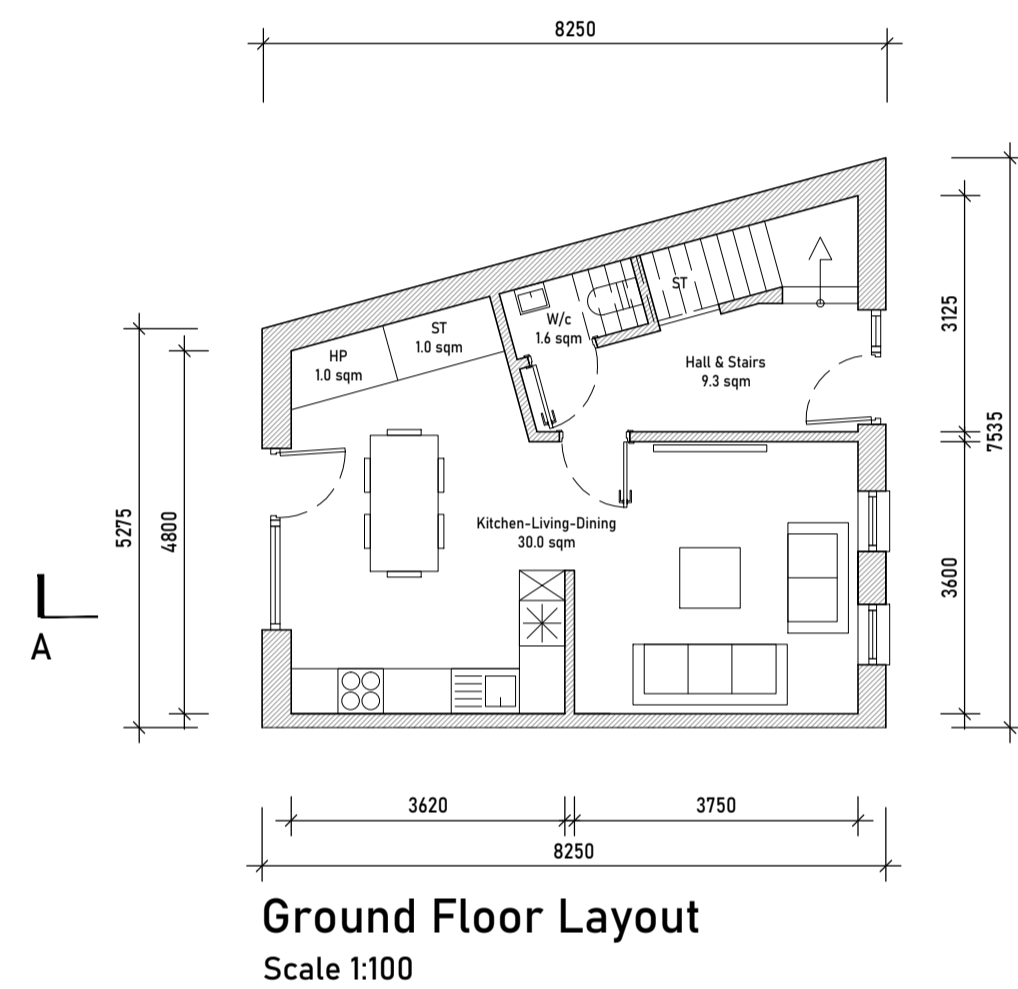
| Development Summary | |
|-----------------------------|--------------------------|
| Site Area | 12 ha |
| No. of Units | 31 |
| Density | 25.8 units/ha |
| No. of Bed Spaces | 119 (Avg 3.8 per unit) |
| No. of Parking Spaces | 51 (37 on-street spaces) |
| Public Open Space Provision | 15% of site area |

COPYRIGHT:
The design and details shown on this drawing are applicable to their project only and may not be reproduced in whole or in part or be used for any other project or purpose without the written permission of Limerick City & County Council with whom copyright resides.
DO NOT SCALE from this drawing. Use figured dimensions.
Contractor to check all dimensions on site prior to commencement of works. Any discrepancies are to be referred to the ARCHITECT.

NOTES:

Note 1:
Please refer to the Site Layout and Contiguous Site Sectional-Elevation drawings for F.F.L's and Ridge Levels associated with each unit.

Typical F.F.L's of +0.15m above ground level for ground floor layouts and +2.90m above ground level for second floor layouts apply.



REVISIONS

| DATE | REV. BY | CHKD | DESCRIPTION |
|------|---------|------|-------------|
| | | | |
| | | | |
| | | | |
| | | | |

LIMERICK CITY & COUNTY COUNCIL
LA HOUSING CONSTRUCTION & MAINTENANCE
DOORADOYLE
LIMERICK
t: +353 61 556000
e: customerservices@limerick.ie

PROJECT:
31 No. Housing Units at Sycamore Crescent,
Gortboy, Newcastle West, Co.Limerick.

STAGE:
PART 8

DRAWING TITLE:
Proposed Unit Type E
General Arrangement Drawings

| | |
|---------------------|------------------------|
| DATE: Nov 14th 2022 | DRAWING NO: 19119-3004 |
| SCALE: 1:100 | |
| DRAWN: BR | |
| CHKD: - | SHEET SIZE: REVISION: |
| JOB NO.: 19119 | A1 |
| FILE NAME: - | |