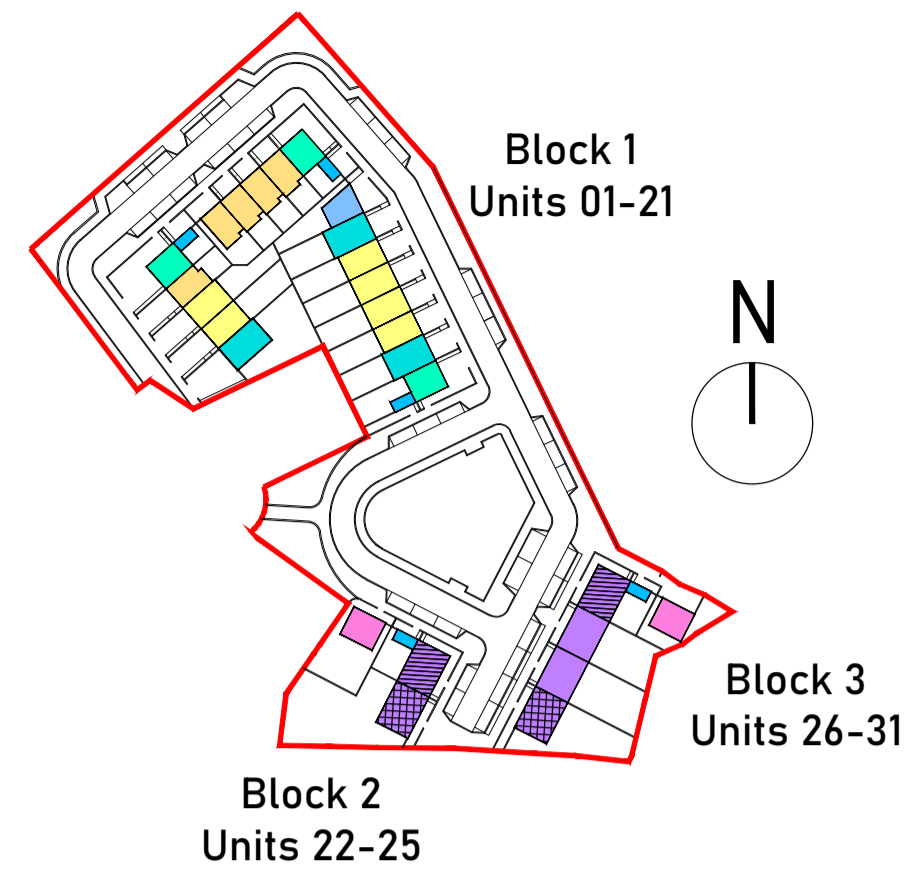


UNIT TYPE_F (F1, F2, F3)

2B - 4P - 1S / HOUSE

Relevant Area	Proposed Unit		Equivalent Dept Guidelines		Comparison of Floor Area %
	Actual Width (m)	Actual Area (sqm)	Min Width (m)	Min Area (sqm)	
Bedroom 1	3.4	13.5	2.8	13.0	+3.8 %
Bedroom 2	3.0	11.5	2.8	11.4	+0.9 %
Bedroom 3					
Bedroom 4					
Living Room	4.16	13.0	3.6	13.0	+0.0 %
Total Storage Area		3.0		4.0	-25.0 %
Total Living-Kitchen-Dining Area		30.0		30.0	+0.0 %
Total Bedroom Area		25.0		25.0	+0.0 %
Gross Internal Area		75.3		70.0	+7.6 %

Key Plan



Schedule of Units

Block	Unit Number	House/Apt	Unit Type	Description	GFA Area (sqm)
Block 1	1	House	UT - A	4B - 7P - 3S	131.2
	2	House	UT - A	3B - 5P - 3S	112.2
	3	House	UT - A	3B - 5P - 3S	112.2
	4	House	UT - B	2B - 4P - 2S	87.9
	5	Apt	UT - C	1B - 2P - 1S	47.2
	6	Apt	UT - D	1B - 2P - 2S	65.0
	7	House	UT - B	2B - 4P - 2S	87.9
	8	House	UT - B	2B - 4P - 2S	87.9
	9	House	UT - B	2B - 4P - 2S	87.9
	10	House	UT - B	2B - 4P - 2S	87.9
	11	Apt	UT - C	1B - 2P - 1S	47.2
Block 2	12	Apt	UT - D	1B - 2P - 2S	65.0
	13	House	UT - E	2B - 4P - 2S	87.4
	14	House	UT - M	4B - 7P - 3S	131.2
	15	House	UT - A	3B - 5P - 3S	112.2
	16	House	UT - A	3B - 5P - 3S	112.2
	17	House	UT - A	3B - 5P - 3S	112.2
	18	House	UT - A	3B - 5P - 3S	112.2
	19	House	UT - M	4B - 7P - 3S	131.2
	20	Apt	UT - C	1B - 2P - 1S	47.2
	21	Apt	UT - D	1B - 2P - 2S	65.0
Block 3	22	House	UT - G	1B - 2P - 1S	47.3
	23	House	UT - A	3B - 5P - 3S	75.3
	24	Apt	UT - D	1B - 2P - 2S	65.0
	25	House	UT - G	2B - 4P - 1S	75.3
	26	House	UT - F1	2B - 4P - 1S	75.3
27	House	UT - F1	2B - 4P - 1S	75.3	
28	House	UT - F1	2B - 4P - 1S	75.3	
29	House	UT - F2	2B - 4P - 1S	75.3	
30	Apt	UT - G	1B - 2P - 2S	65.0	
31	House	UT - G	1B - 2P - 1S	47.3	

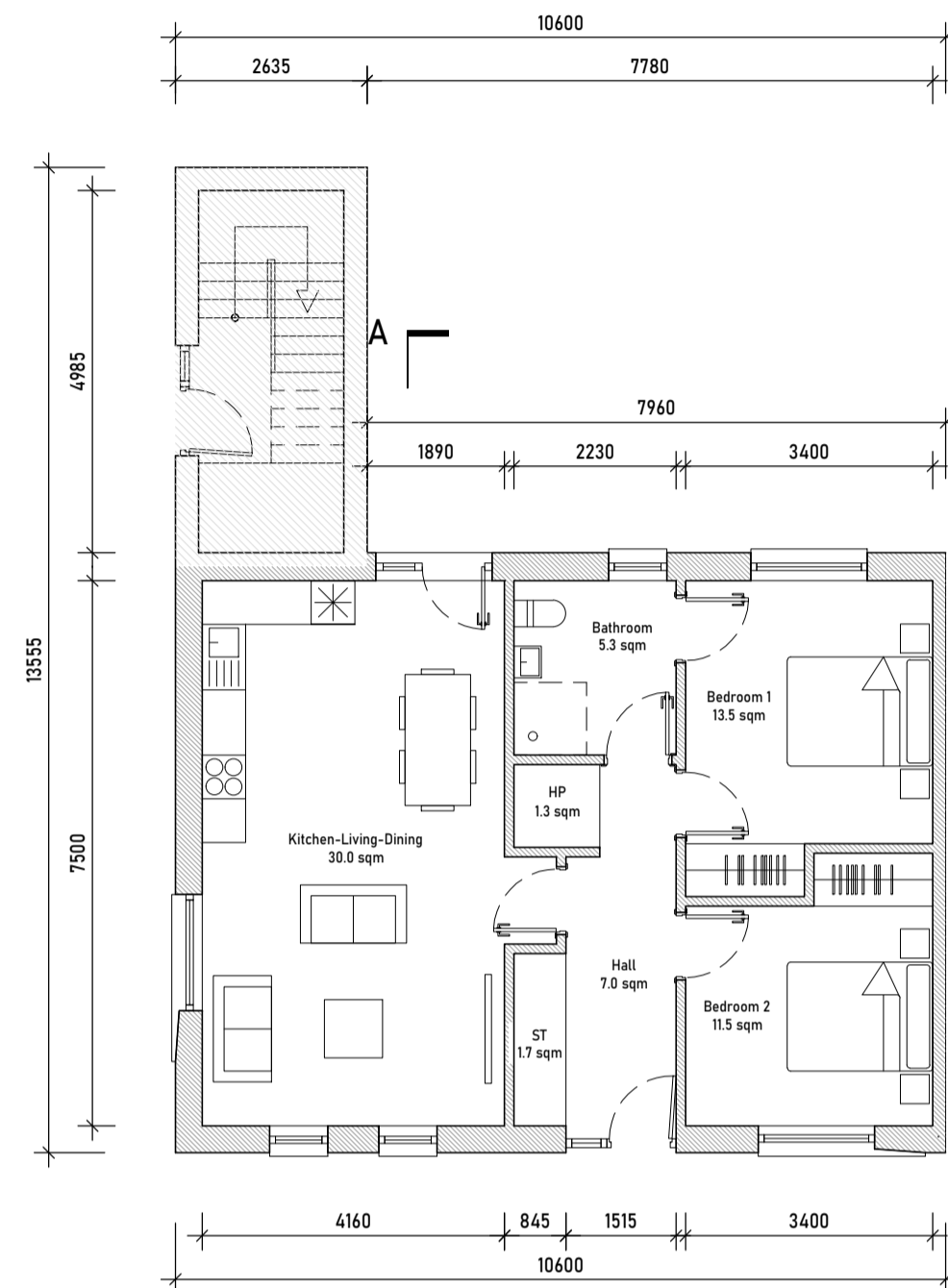
Development Summary

House Type	Description	No. of	%
UT - A	3B - 5P - 3S	4	19.35
UT - B	2B - 4P - 2S	5	16.12
UT - C	1B - 2P - 1S	3	7.67
UT - D	1B - 2P - 2S	5	16.12
UT - E	2B - 4P - 2S	1	3.22
UT - F	2B - 4P - 1S	6	19.35
UT - G	1B - 2P - 1S	2	6.59
UT - H	4B - 7P - 3S	3	9.47
		31	100.00

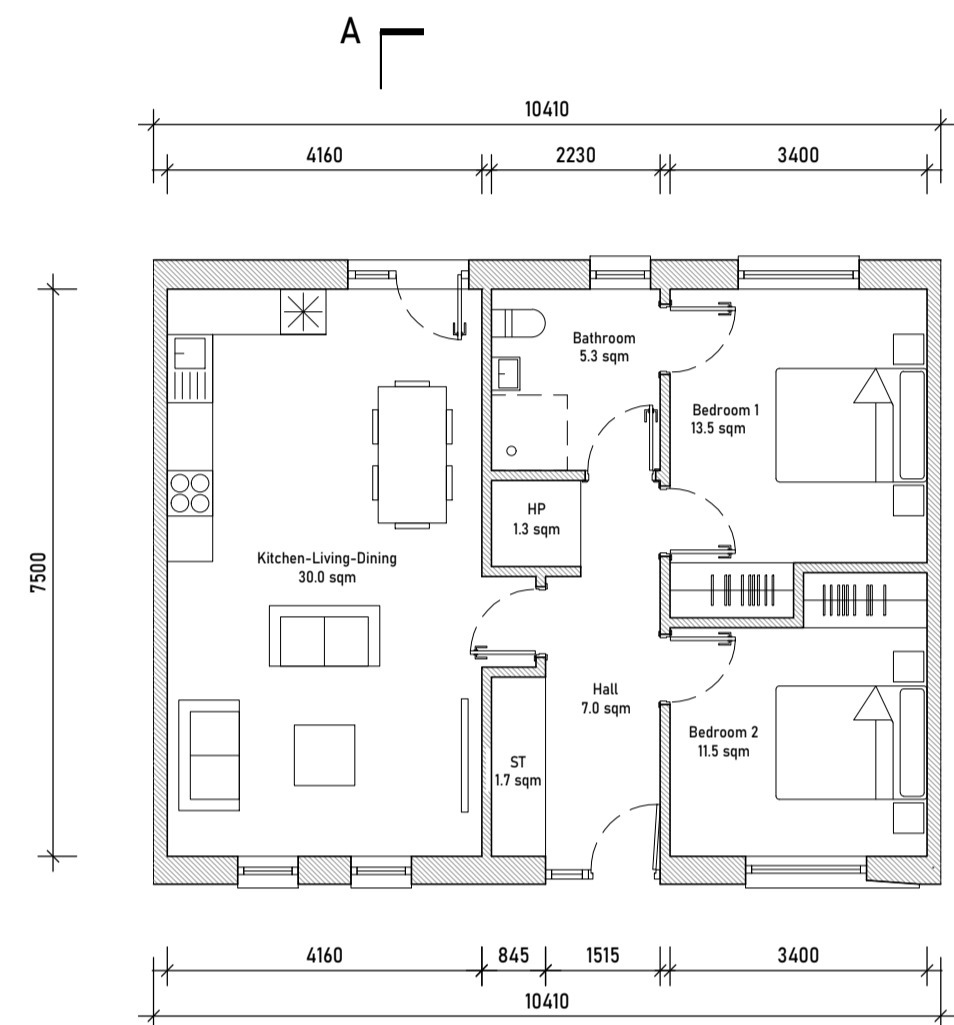
Development Summary	
Site Area	1.2 ha
No. of Units	31
Density	25.8 units/ha
No. of Bed Spaces	119 (Avg 3.8 per unit)
No. of Parking Spaces	51 (37 on-street spaces)
Public Open Space Provision	15% of site area

Note 1:
Please refer to the Site Layout and Contiguous Site Sectional-Elevation drawings for F.F.L's and Ridge Levels associated with each unit.

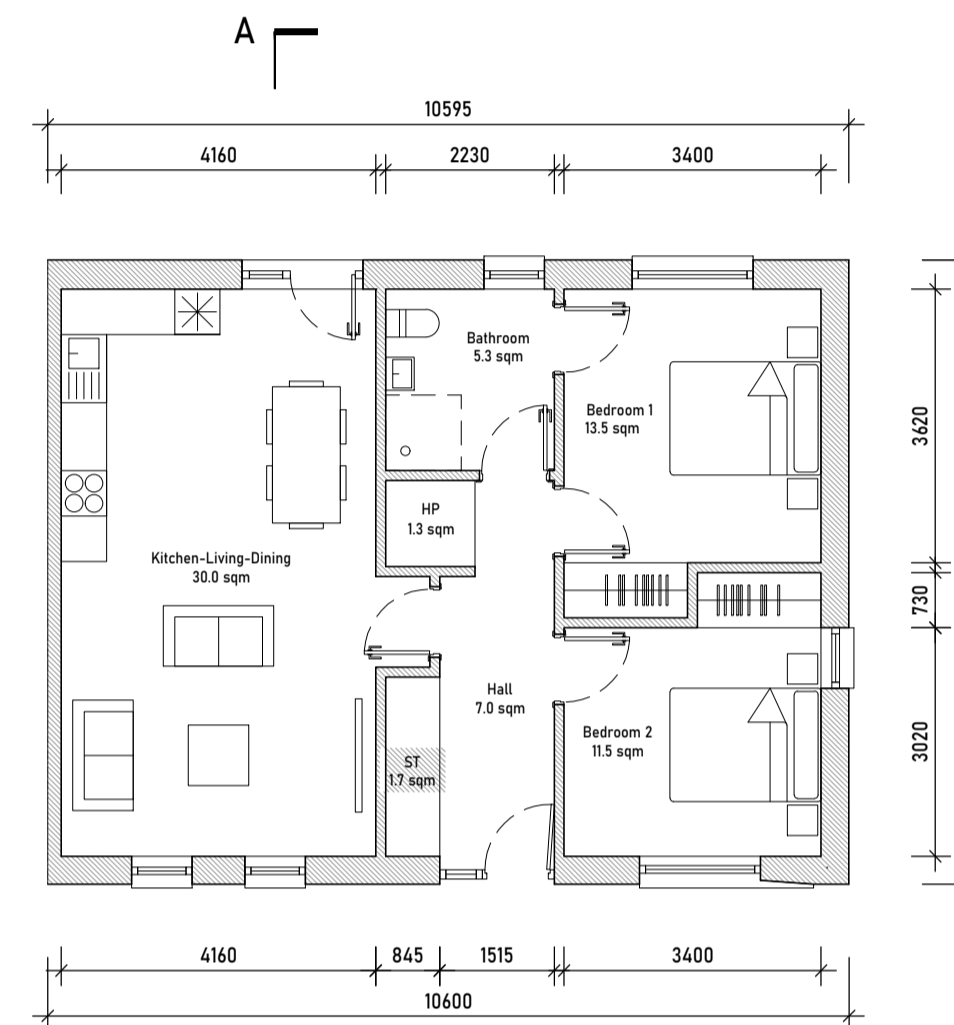
Typical F.F.L's of +0.15m above ground level for ground floor layouts and +2.90m above ground level for second floor layouts apply.



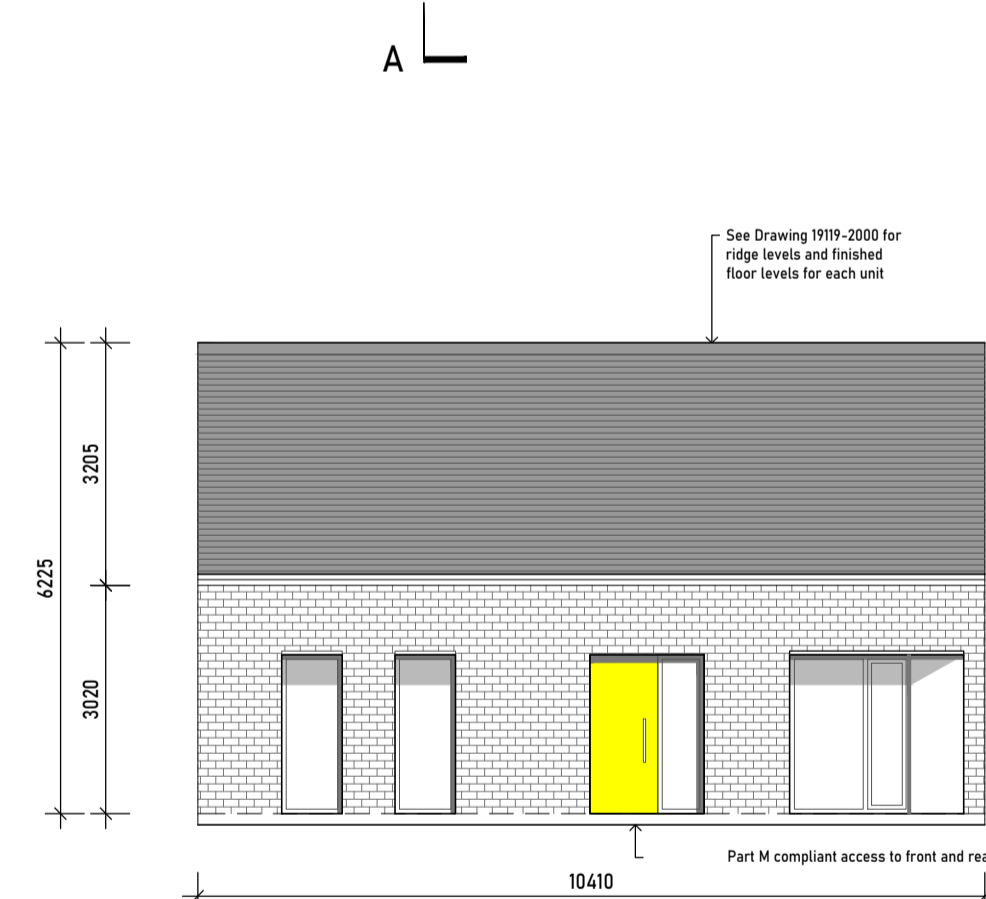
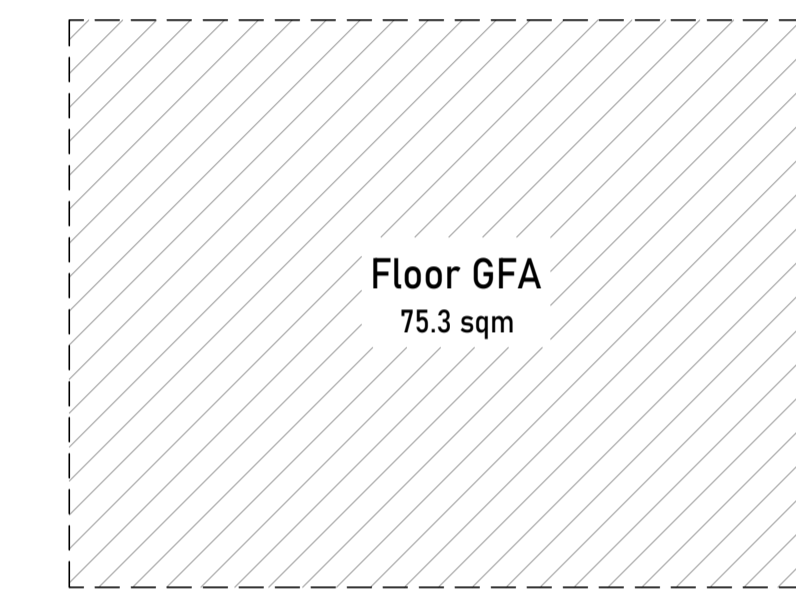
Floor Layout (F2 Type)
Scale 1:100



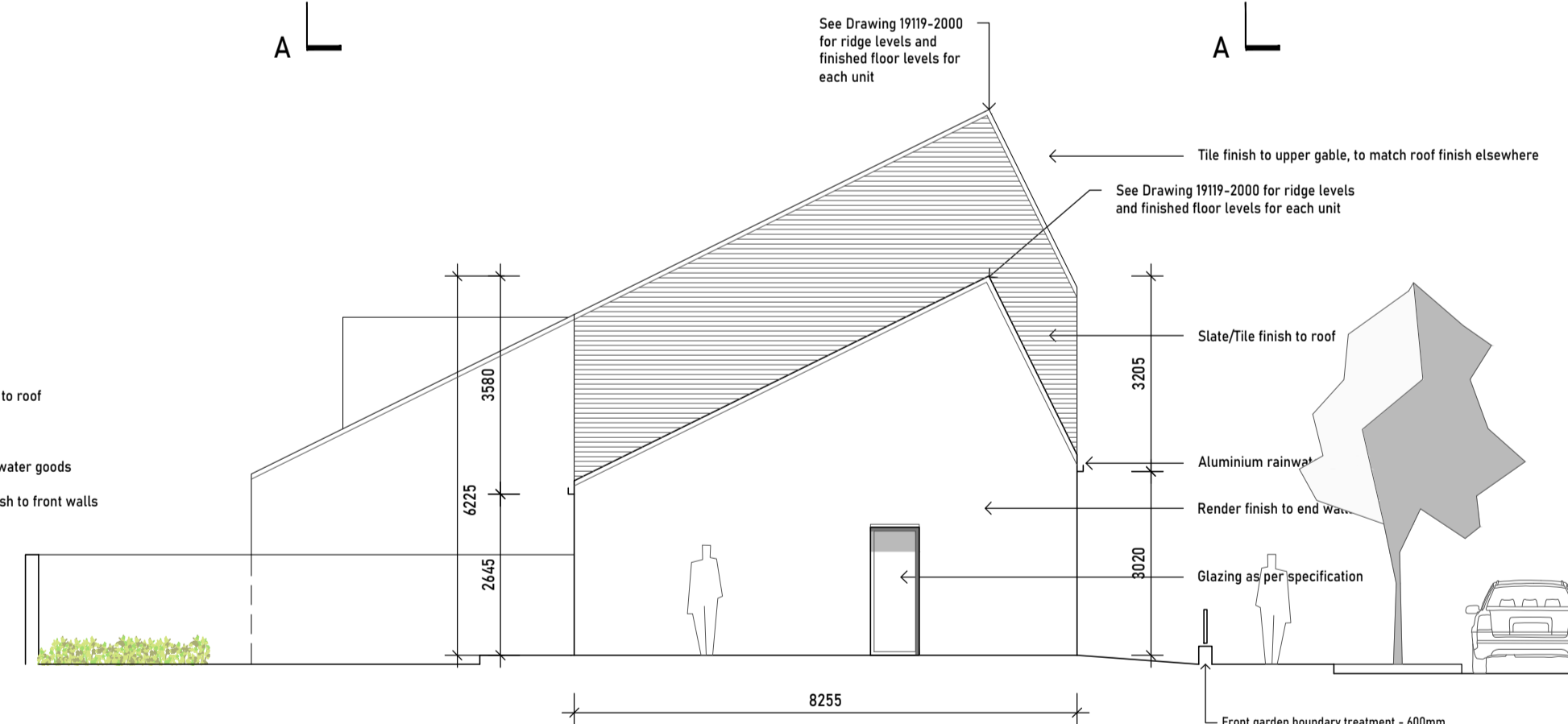
Floor Layout (F1 Type)
Scale 1:100



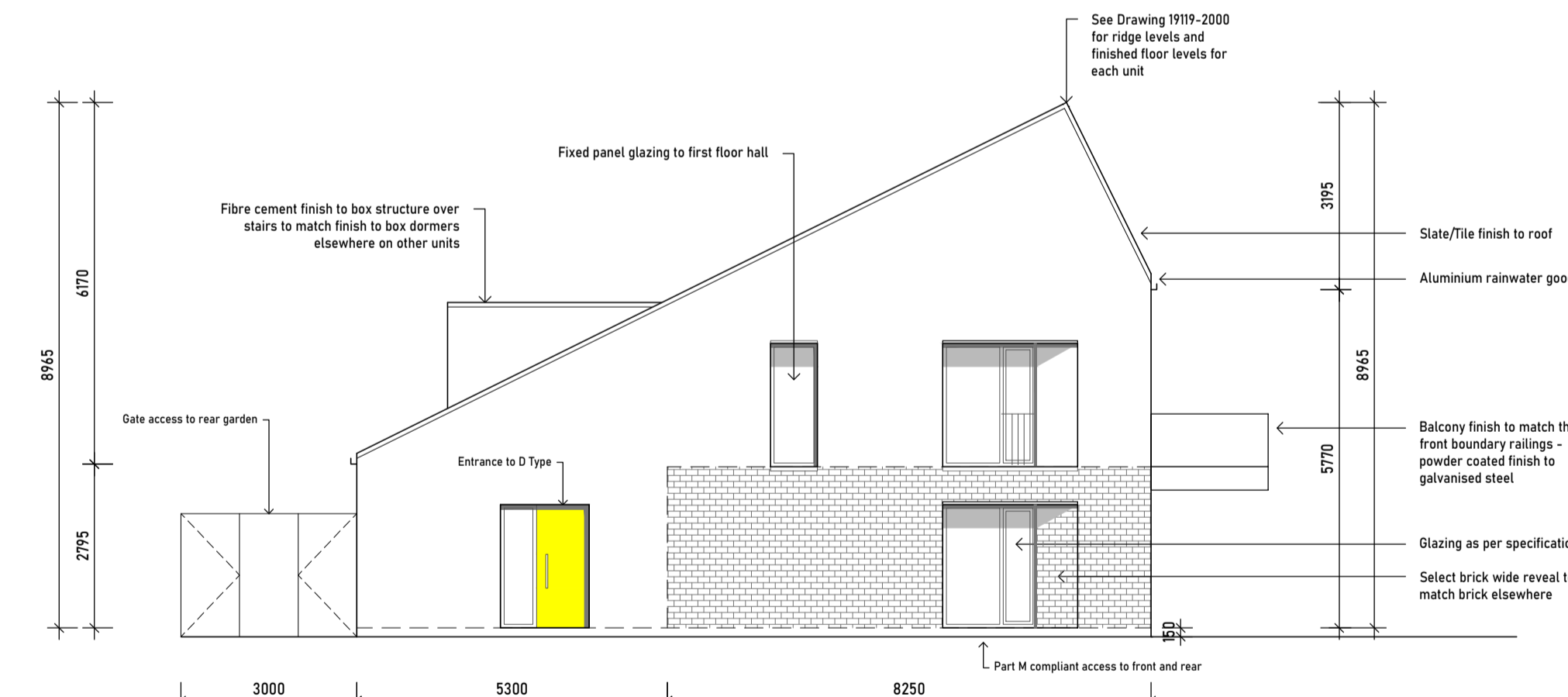
Floor Layout (F3 Type)
Scale 1:100



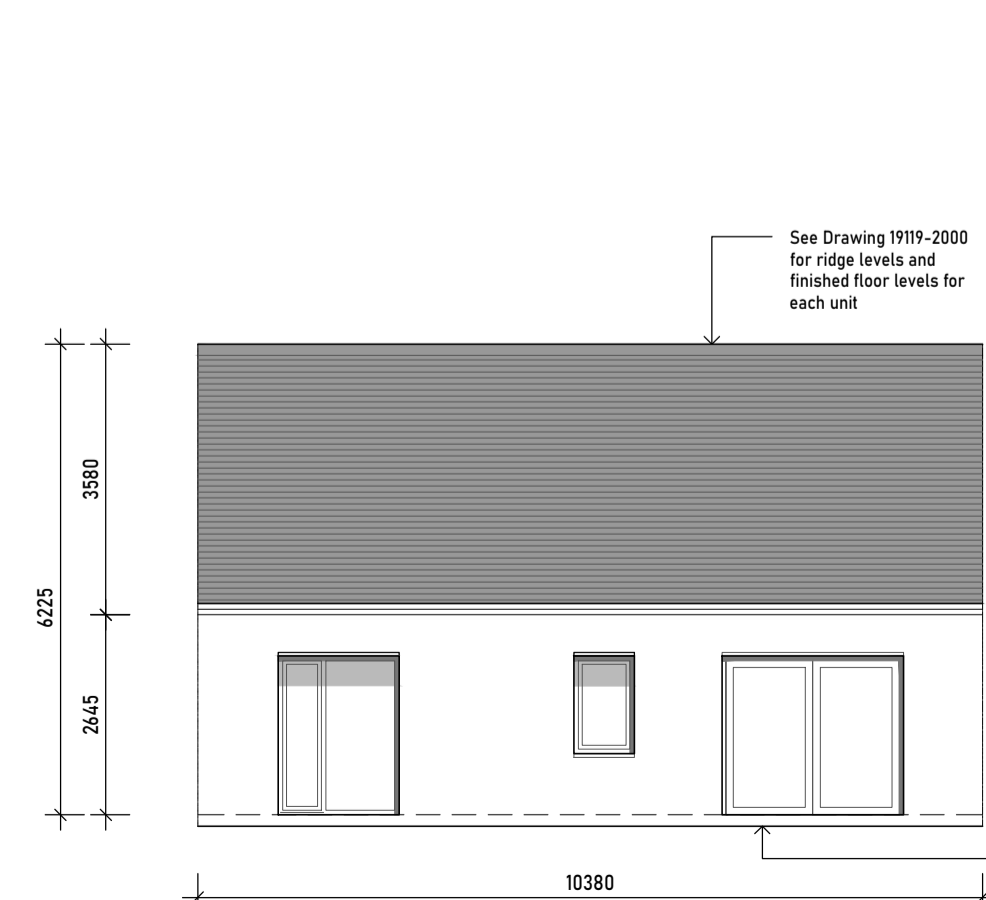
Front Elevation (F1/F2 Type)
Scale 1:100



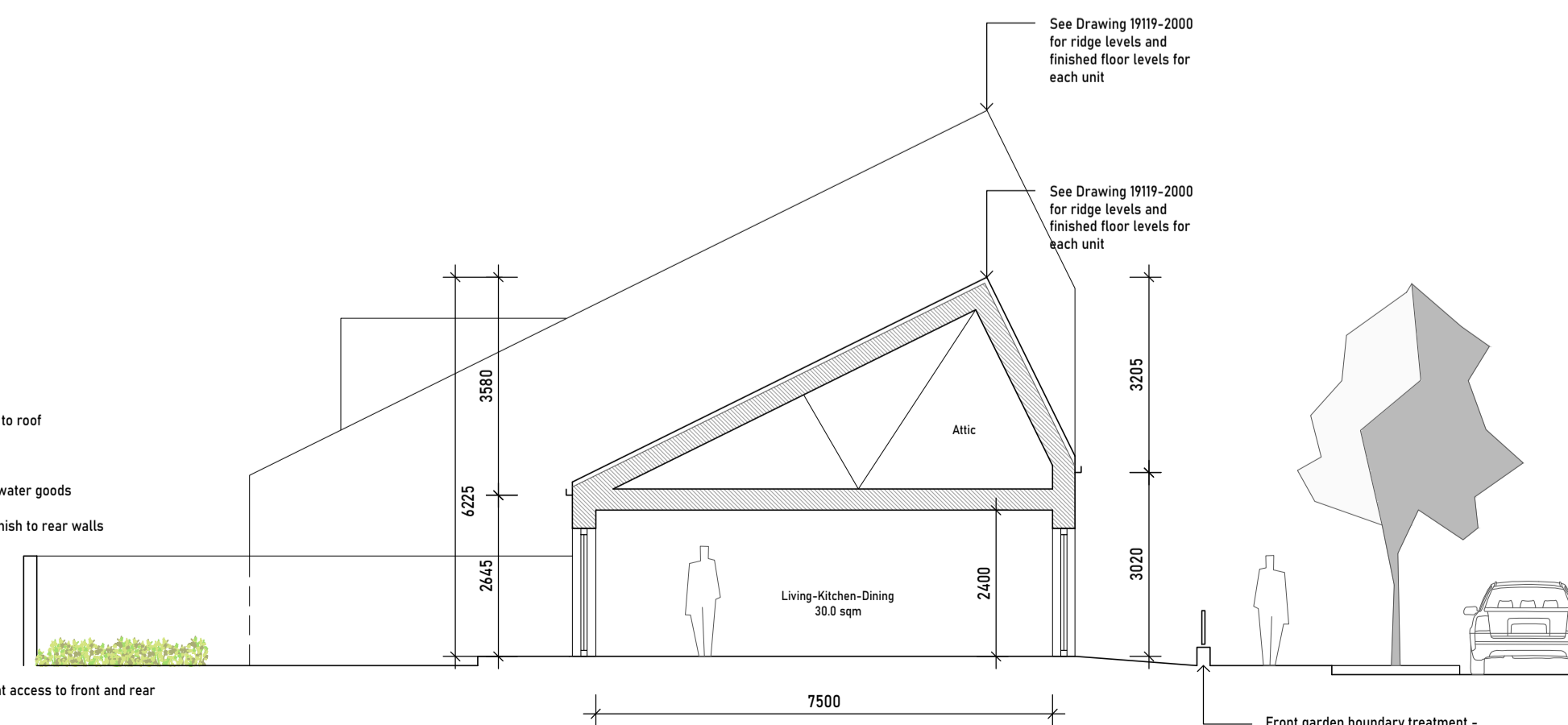
Side Elevation (F3 Type)
Scale 1:100



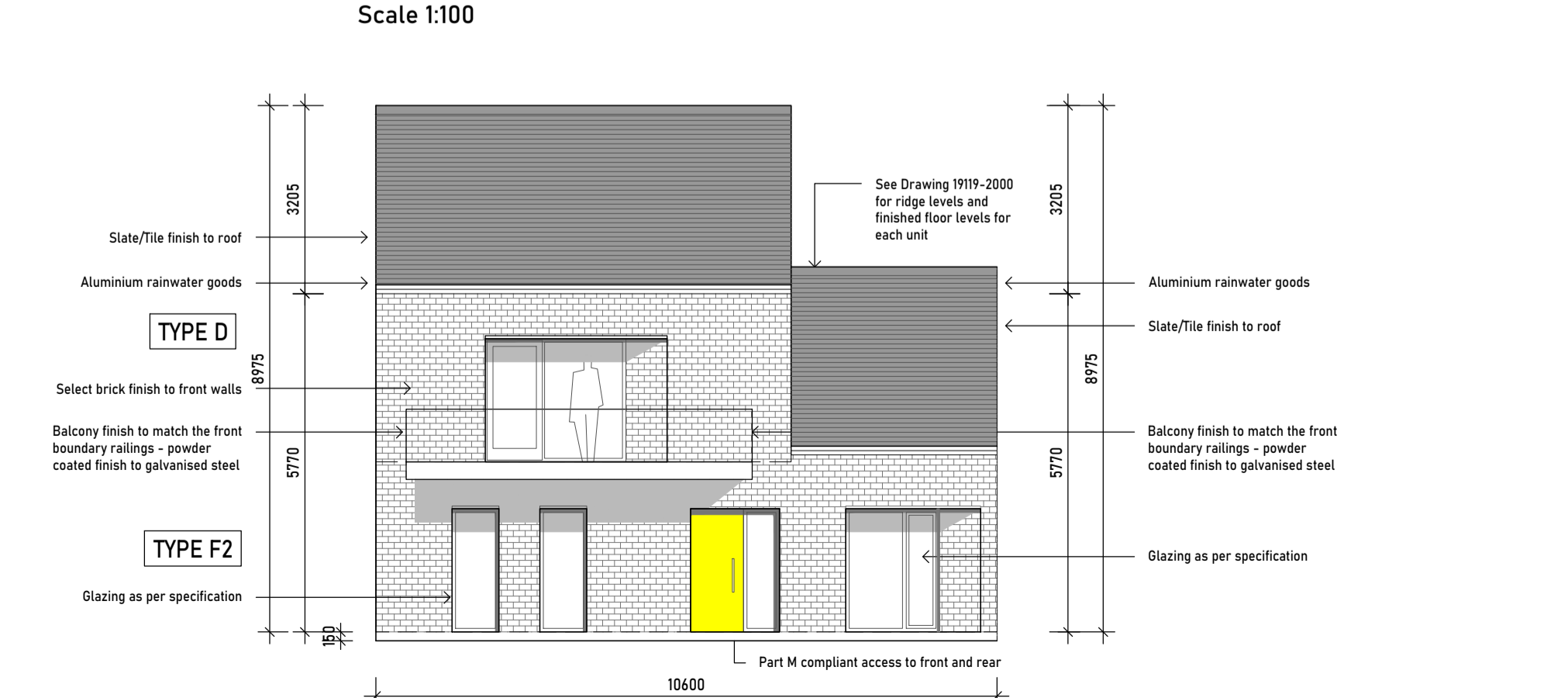
Side Elevation (F2 Type with D Type over)
Scale 1:100



Rear Elevation (F1/F2 Type)
Scale 1:100



Section A-A (F1/F2 Type)
Scale 1:100



Front Elevation (F2 Type with D Type over)
Scale 1:100

REVISIONS

DATE	REV. BY	CHKD	DESCRIPTION

DATE: Nov 14th 2022
SCALE: 1:100
DRAWN: BR
CHKD: -
JOB NO.: 19119
FILE NAME: -

LIMERICK CITY & COUNTY COUNCIL
LA HOUSING CONSTRUCTION & MAINTENANCE
DOORADOYLE
LIMERICK
t: +353 61 556000
e: customerservices@limerick.ie

PROJECT:
31 No. Housing Units at Sycamore Crescent,
Gortboy, Newcastle West, Co.Limerick.

STAGE:
PART 8

DRAWING TITLE:
Proposed Unit Type F
General Arrangement Drawings

DRAWING NO.: 19119-3005
SHEET SIZE: REVISION: A1