

- Illustrative images:**
- 1: Flowering rush (*Butomus umbellatus*), native riverside marginal plant
 - 2: Cone flower (*Echinacea 'Hot Summer'*), long flowering perennial suited to biofiltration beds with bold colour and excellent for pollinators
 - 3: *Cotoneaster lacteus*, managed as a hedge, fast growing evergreen with seasonal flowers and berries that is excellent for pollinators
 - 4: Purple top grass (*Molinia caerulea subsp. caerulea 'Heidebraut'*) Structural clump forming plant with year round seasonal interest suitable for biofiltration areas.
 - 5: *Salvia* spp. example of seasonal colour, suitable for bioretention planting and excellent for biodiversity.
 - 6: Yellow Flag Iris (*Iris pseudacorus*) native strong growing marginal plant excellent for pollinators
 - 7: Purple Top (*Verbena bonariensis*) tall erect perennial with long flowering period suited to biofiltration areas and excellent for pollinators
 - 8: Persian lornwood (*Parrotia persica*), slow growing tree with arching form, stunning seasonal colour, able to cope with urban environments and planting in a container or confined space.
 - 9: Espalier form apple trees (*Malus* spp.) planted along a south facing wall, provide seasonal interest and distinctiveness, spring flowers excellent for pollinators and attractive edible autumn fruit.



LEGEND



Tree Planting Schedule (to be sourced from an Irish Supplier)

Nr	Abbrv.	Species	Height	Girth	Stem	Type
Multi-Stem Tree for Planter (Refer to Detail Drg. No. 7004/301)						
1	Pp	<i>Parrotia persica</i>	3-3.5m		Multi-stem	RB

Espalier Trees -Extra Heavy Standard (16-18cm) (Refer to Detail Drg. No. 7004/301)

Nr	Abbrv.	Species	Height	Form	Spacing	Type
7	ME	<i>Malus domestica 'Eistar'</i> 5 layers, width 1.6m, 2 years trained	3.7m	16-18cm	Clear 2.1m	RB

Hedge Planting to be managed as clipped

Nr	Abbrv.	Species	Height	Form	Spacing	Type
Hedge planted double row staggered (Lin.m) (Refer to Detail Drg. No. 7004/301)						
50	H1	<i>Cotoneaster lacteus -7.5 lin.m</i>	60-80cm	Branched	0.3	3L C

Biofiltration Planting (Refer to Detail Drg. No. 7004/301): 31 SQ.M

Nr	Mix %	Species	Spec	Form	Density	Type
23	8%	<i>Acanthus mollis</i>	7 Buds	Full Pot	9/sq.m.	3L
14	5%	<i>Astilbe chinensis pumila</i>	7 Buds	Full Pot	9/sq.m.	3L
8	5%	<i>Dryopteris affinis 'Cristata'</i>		Full Pot	5/sq.m.	2L
23	8%	<i>Echinacea 'Sunrise'</i>		Full Pot	9/sq.m.	2L
23	8%	<i>Echinacea 'Hot Summer'</i>		Full Pot	6/sq.m.	2L
15	9%	<i>Helleborus niger</i>		Full Pot	9/sq.m.	2L
19	10%	<i>Molinia caerulea subsp. 'heidebraut'</i>		Full Pot	5/sq.m.	2L
23	8%	<i>Persicaria affinis 'Darjeeling Red'</i>	7 Buds	Full Pot	9/sq.m.	3L
23	8%	<i>Phlox paniculata 'White Admiral'</i>	7 Buds	Full Pot	9/sq.m.	3L
23	8%	<i>Sedum 'Matrona'</i>		Full Pot	9/sq.m.	2L
28	10%	<i>Salvia nemorosa 'Caradonna'</i>		Full Pot	9/sq.m.	2L
23	8%	<i>Rudbeckia fulgida 'Goldsturm'</i>	7 Buds	Full Pot	9/sq.m.	3L
8	5%	<i>Verbena bonariensis</i>		Full Pot	5/sq.m.	2L

Marginal Planting (Refer to Detail Drg. No. 7004/301):13 SQ.M

Nr	Mix %	Species	Spec	Form	Density	Type
4	10%	<i>Butomus umbellatus</i>		Full Pot	3/sq.m.	2L
23	30%	<i>Caltha palustris</i>		Full Pot	6/sq.m.	2L
7	10%	<i>Eleocharis palustris</i>		Full Pot	5/sq.m.	2L
7	10%	<i>Glyceria maxima</i>		Full Pot	5/sq.m.	2L
13	20%	<i>Iris pseudacorus</i>		Full Pot	5/sq.m.	2L
13	20%	<i>Lysimachia vulgaris</i>		Full Pot	5/sq.m.	2L

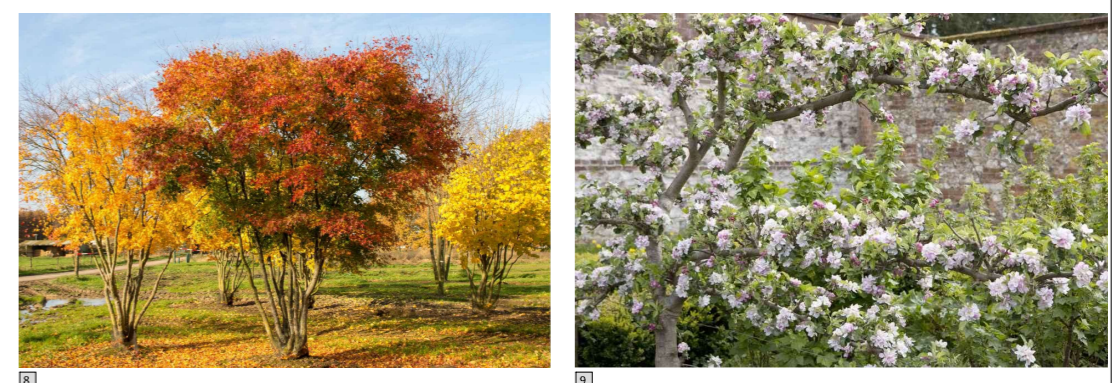
Herbs in planter (Refer to Detail Drg. No. 7004/301): 5 SQM

Nr	Mix %	Species	Height	Form	Density	Type
4	15%	<i>Allium schoenoprasum (Chives)</i>		Full Pot	5/sq.m.	2L
5	20%	<i>Origanum vulgare (Oregano)</i>		Full Pot	5/sq.m.	2L
5	20%	<i>Origanum majorana (Marjoram)</i>		Full Pot	5/sq.m.	2L
4	15%	<i>Rosmarinus officinalis Prostratus Group</i>		Full Pot	5/sq.m.	2L
4	15%	<i>Salvia officinalis (Sage)</i>		Full Pot	5/sq.m.	2L
4	15%	<i>Thymus (Thyme)</i>		Full Pot	5/sq.m.	2L

Existing planting along riverbank retained and protected

Proposed 30-50mm, no fines, river washed blue round cobble 300mm wide filter strip to inside edge of bioretention areas.

Planter with Seat - Modular galvanised mild steel planter, 2,400mm Long X 1,800mm Wide X 600mm Deep, with bench seat incorporated on long side in matching steel and finish with Iroko hardwood seat. Steel finishes RAL 7016 (Anthracite Grey) powder coated finish. (Omos s21 planter and s96w galvanised steel bench with Iroko seat, or equivalent approved. Planter filled and planted in accordance with Drg. No. 7004/301.



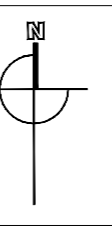
00	YYYY/MM/DD	XX	XX	XXXXXXXX
Rev	Date	Drawn	Checked	Description

Notes

COPYRIGHT © ALL RIGHTS RESERVED.
 THIS WORK IS COPYRIGHT AND CANNOT BE REPRODUCED OR COPIED IN ANY FORM WITHOUT THE WRITTEN PERMISSION OF THE ORIGINATOR.
 DO NOT SCALE FROM THIS DRAWING. WORK ONLY FROM FIGURED DIMENSIONS.
 THIS DRAWING TO BE READ IN CONJUNCTION WITH RELEVANT CONSULTANT'S DRAWINGS.

Ordnance Survey Ireland Licence No AR 0001322
 © Ordnance Survey Ireland/Government of Ireland

File Ref: Y:\7004_ASKEATON_PARKLET\7004_WORKING\7004_CAD\7004_301_Planning\7004_300
 Modified By: George Dundon Modified Time: 12/06/2022 4:23:07 pm
 Plot Time: 12/06/2022 4:55:44 pm



Project	ASKEATON PARKLET, COUNTY LIMERICK	Project No.	7004
Drg.	SOFT LANDSCAPE PLAN	Drawing No.	7004/300
Scales	1: 200 @A2	Status	PLANNING
Date	06/12/22	Drn.	GD
Penrose Wharf Business Centre, Penrose Wharf, Cork	mail@bradyshipmanmartin.com	Chd.	Passed
Tel: +353(0) 21 242 5620	www.bradyshipmanmartin.com		

