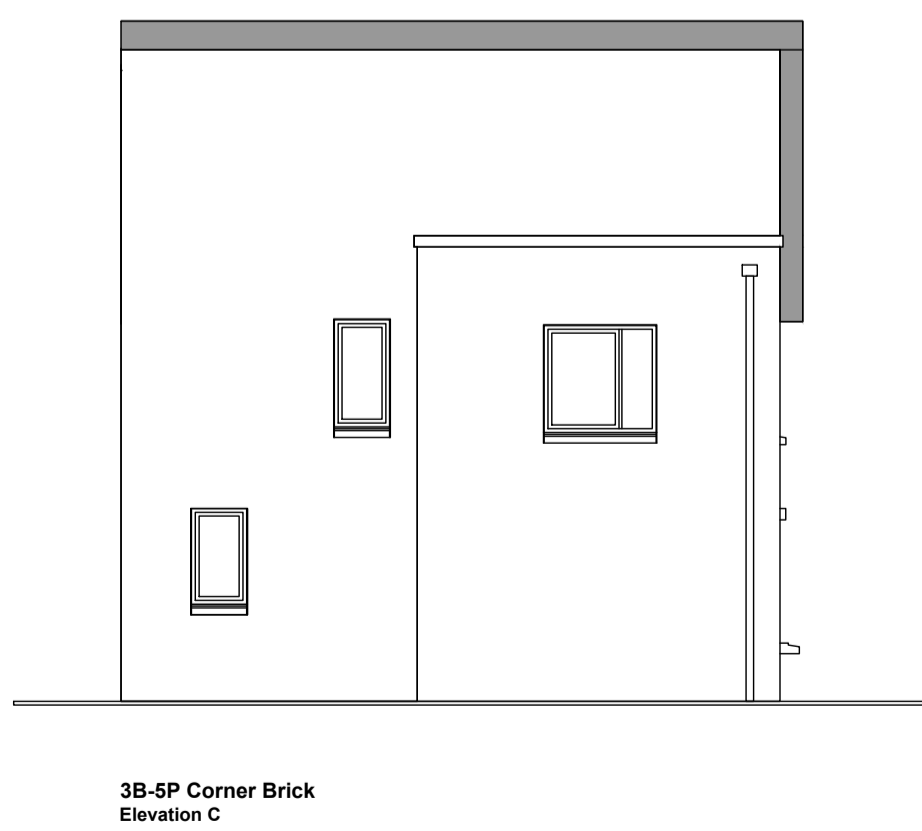
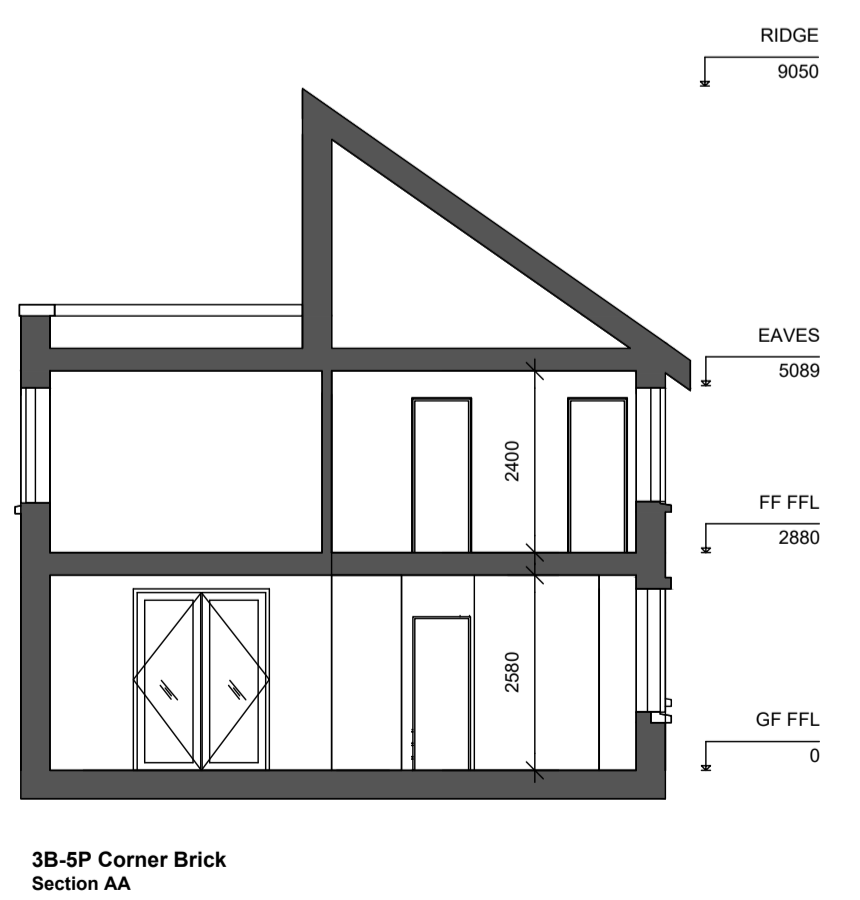
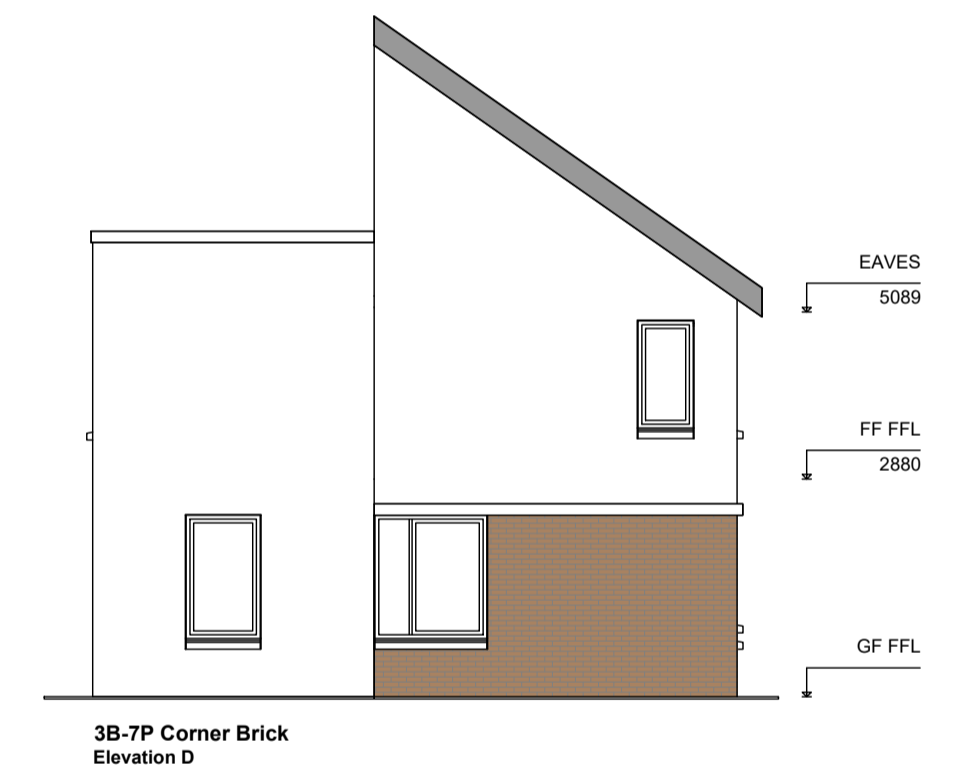
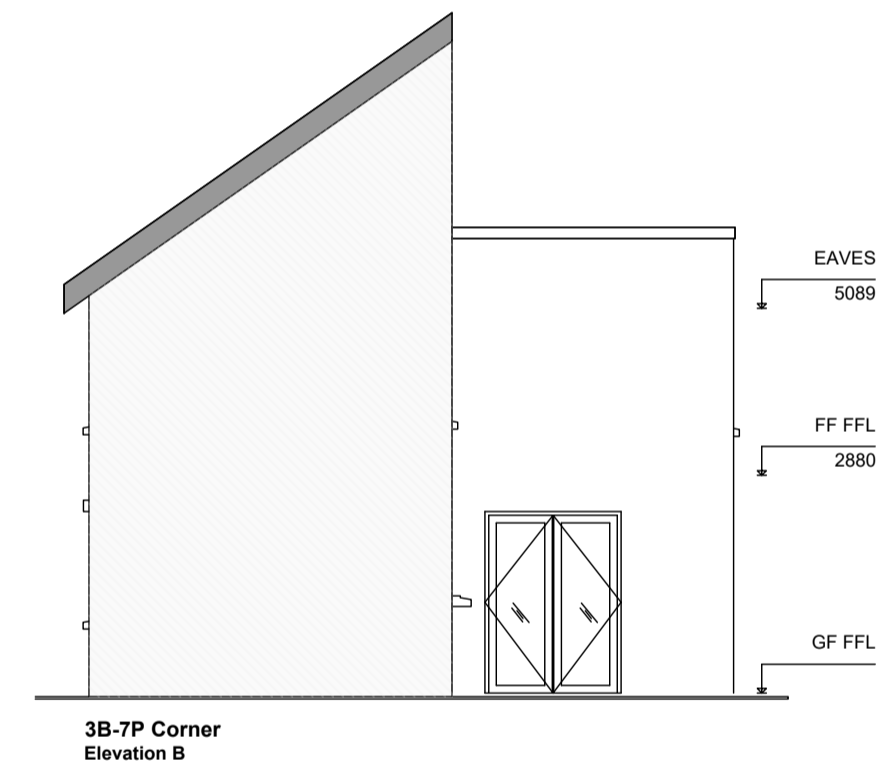
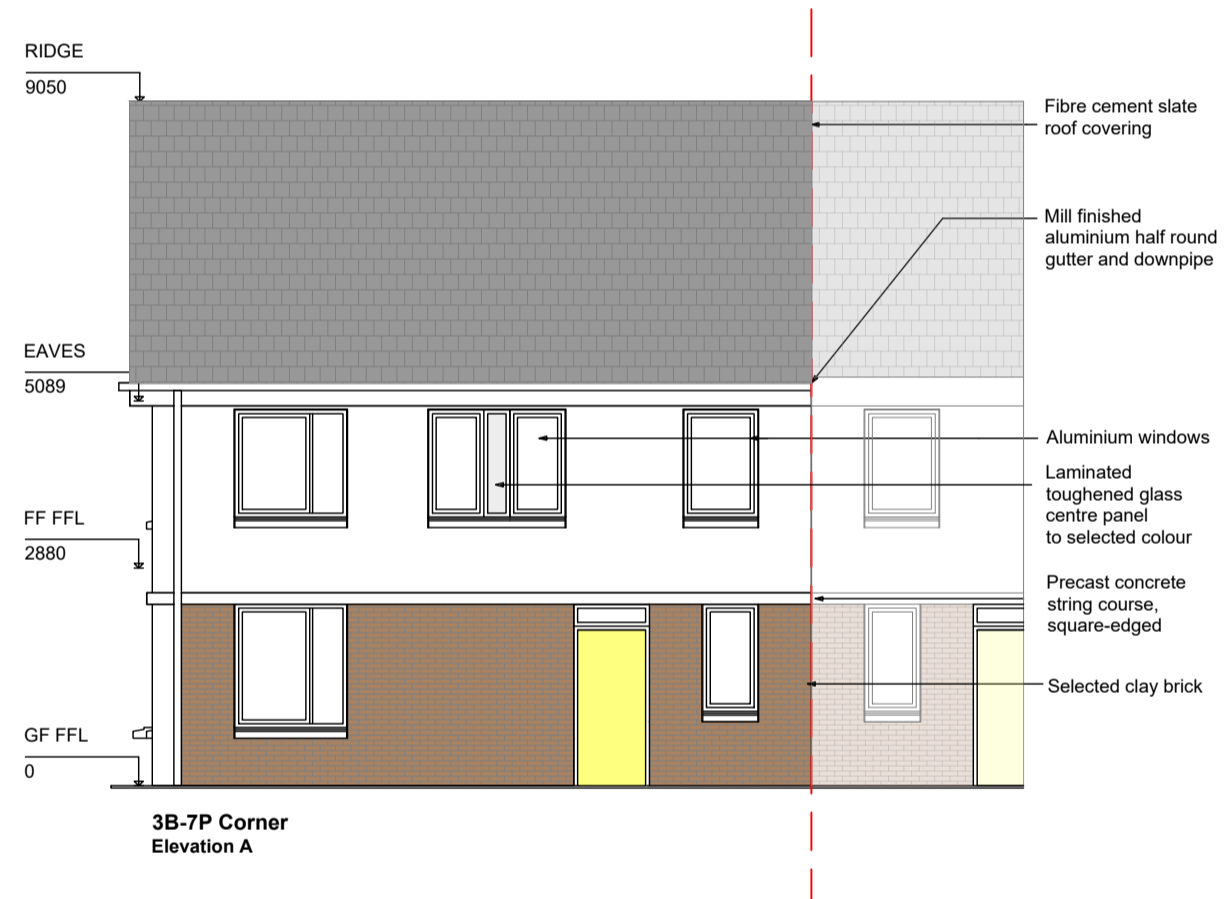
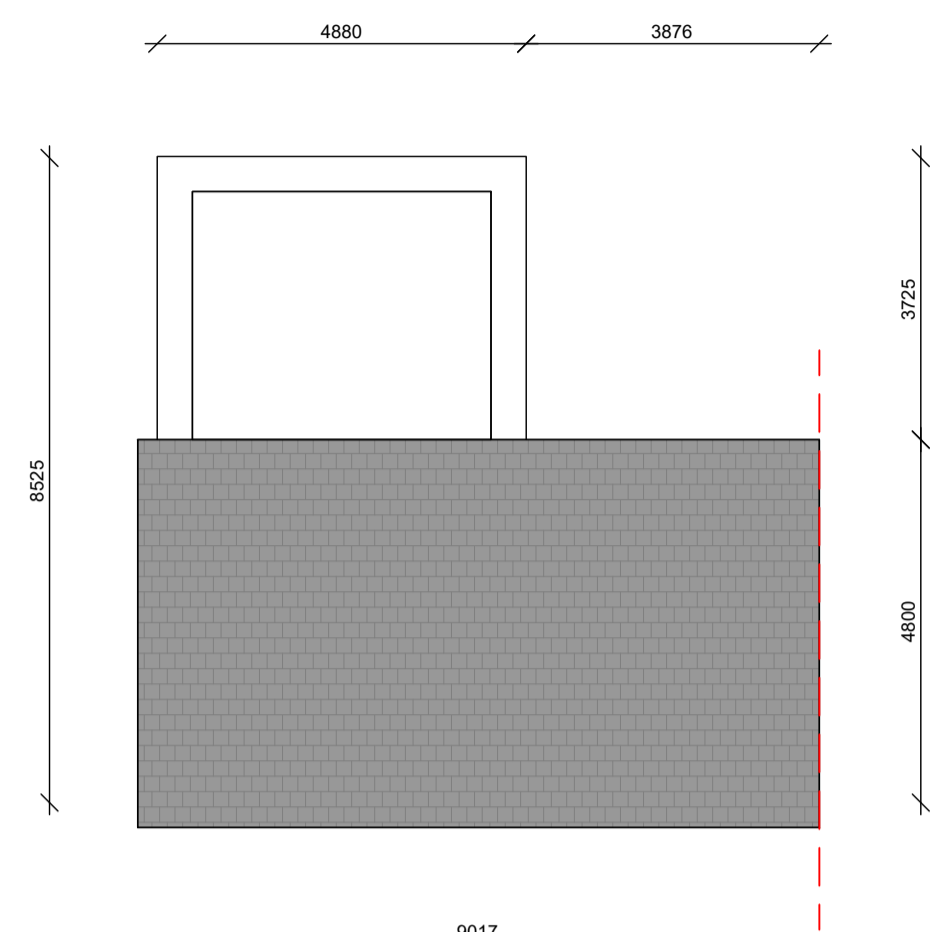
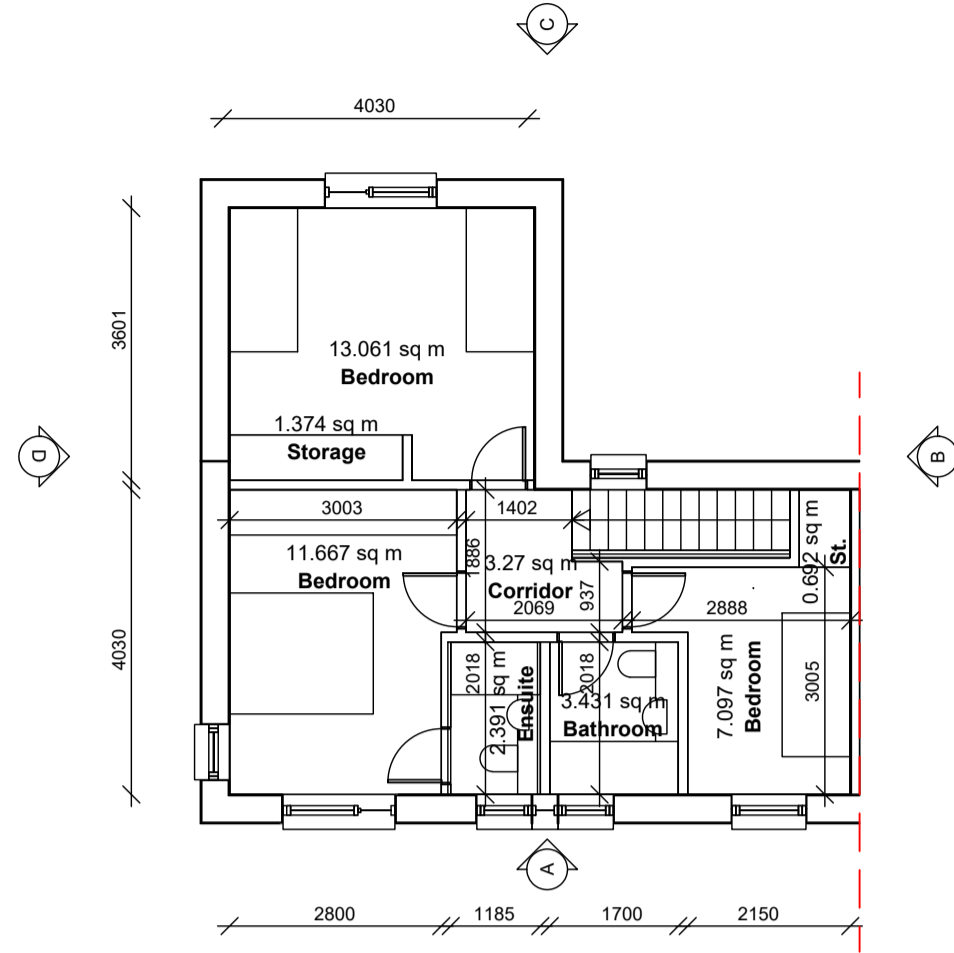
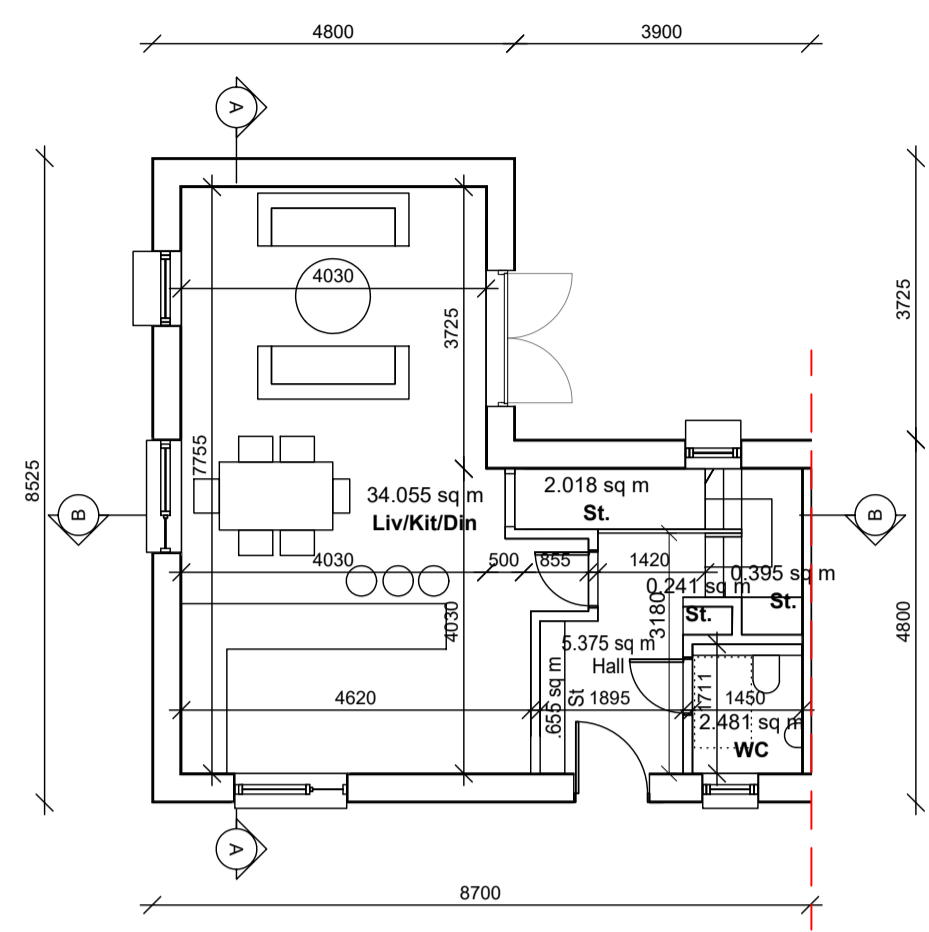


GENERAL NOTES:
 A. THIS DRAWING TO BE READ IN CONJUNCTION WITH ALL RELEVANT ARCHITECTURAL DRAWINGS THE SPECIFICATION AND ALL RELEVANT STANDARD DETAIL DRAWINGS.
 B. THIS DRAWING TO BE READ IN CONJUNCTION WITH ALL RELEVANT CIVIL, STRUCTURAL, MECHANICAL AND ELECTRICAL DRAWINGS TOGETHER WITH THE SPECIFICATIONS AND SCHEDULES.
 C. ALL DIMENSIONS IN MILLIMETERS. DO NOT SCALE FROM THIS DRAWING. USE FIGURED DIMENSIONS ONLY.
 D. CONTRACTOR MUST VERIFY ALL DIMENSIONS ON SITE BEFORE SETTING OUT COMMENCING WORK OR PRODUCING ANY SHOP DRAWINGS.



UNIT TYPE SCHEDULE OF ACCOMMODATION		
Unit Type	Room Name	Room Area
3B/5P Corner GIA 96.18 sq m	WC	2.481 sq m
	Liv/Kit/Din	34.055 sq m
	Hall	5.375 sq m
	St.	0.395 sq m
	St.	0.241 sq m
	St.	2.018 sq m
	St.	0.655 sq m
	Ensuite	2.391 sq m
	Bathroom	3.431 sq m
	Bedroom	7.097 sq m
	Corridor	3.27 sq m
	Bedroom	11.667 sq m
	Bedroom	13.061 sq m
Storage	1.374 sq m	
St.	0.692 sq m	
Aggregate Living	34.28 sq m	
Aggregate Bedroom	31.825 sq m	
Aggregate Storage	5.21 sq m	

Revisions	Date

20 Cruises Street Limerick V94 R6P9 Ireland
 63 Fitzwilliam Sq Dublin 2 D02 N938 Ireland
 (061) 312249 limerick@eml.ie
 (01) 6707677 dublin@eml.ie
 www.eml.ie

Client	Limerick City & County Council	Date	19/09/23
Job	Mungret Residential Development, Mungret, Co.Limerick	Scale @ A1	1:100
Job		Drawn	CS
Job		Checked	ML
Title	3B/5P Corner House Plans, Elevations & Section	Drawing No.	3479-EML-XXX-XX-DR-A-0107
		Rev	