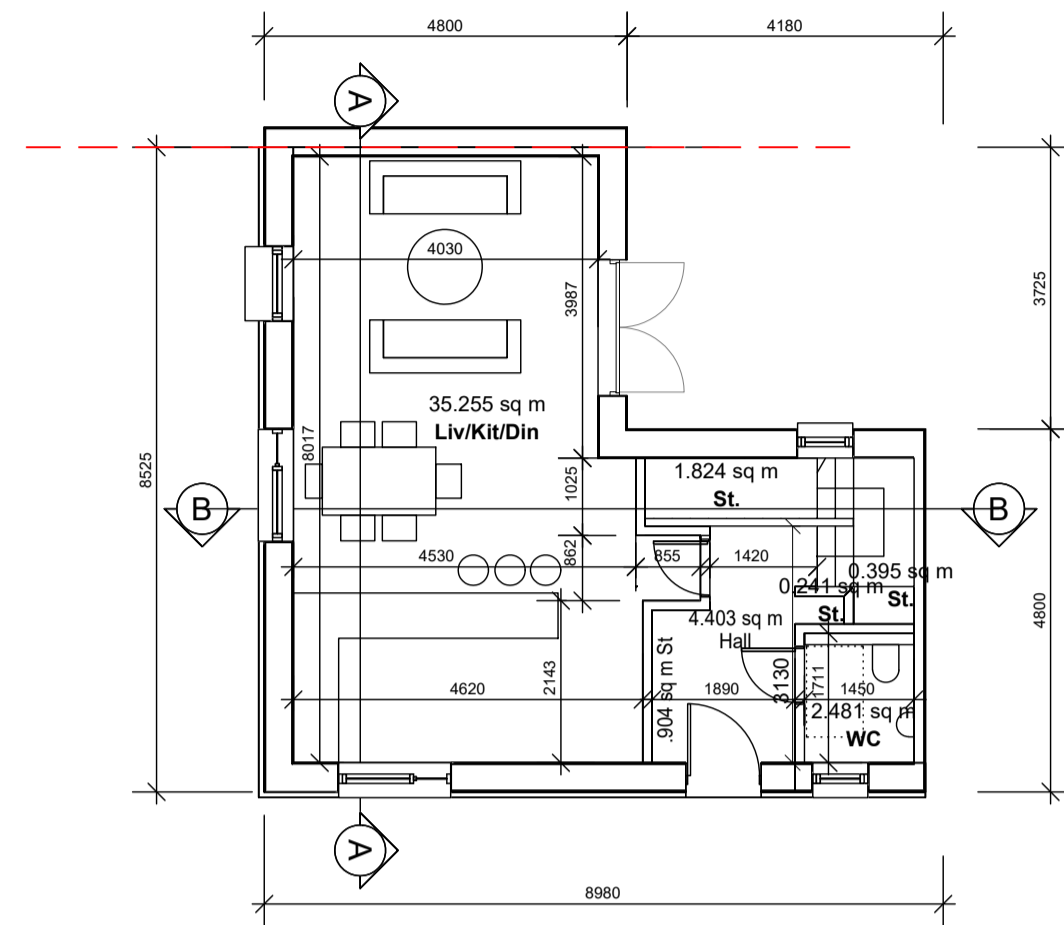
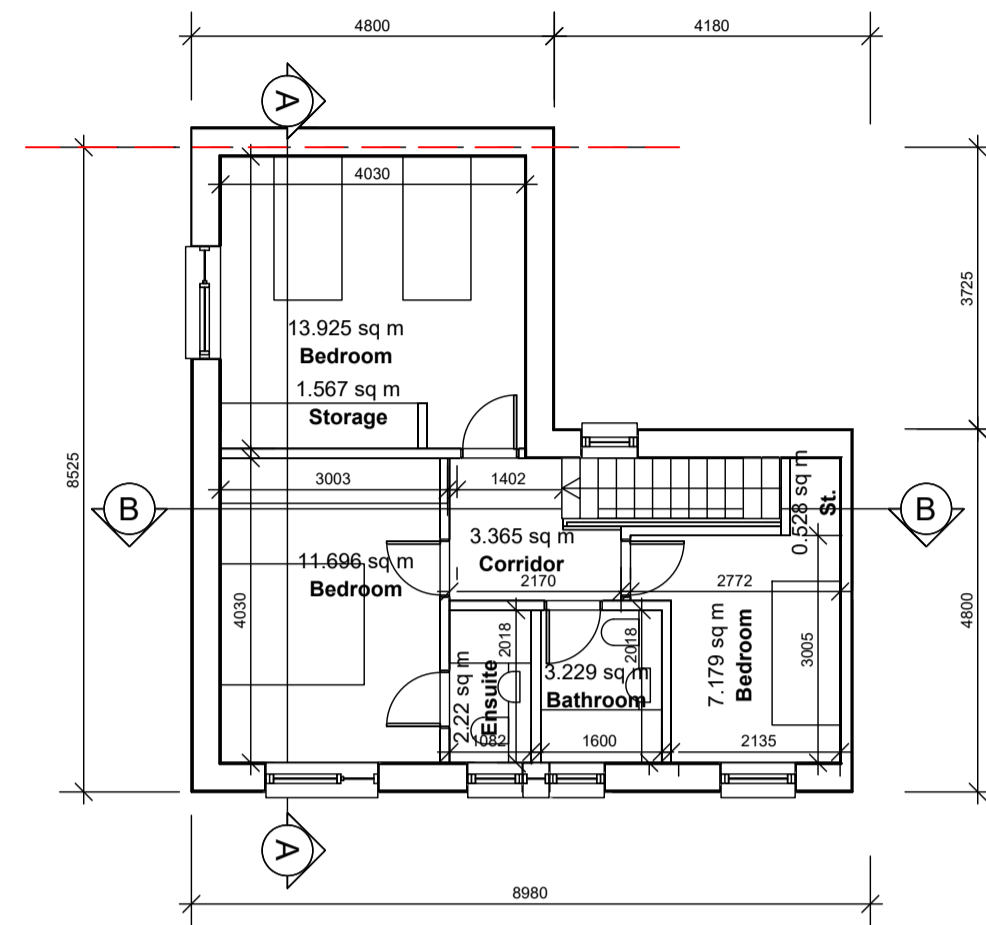


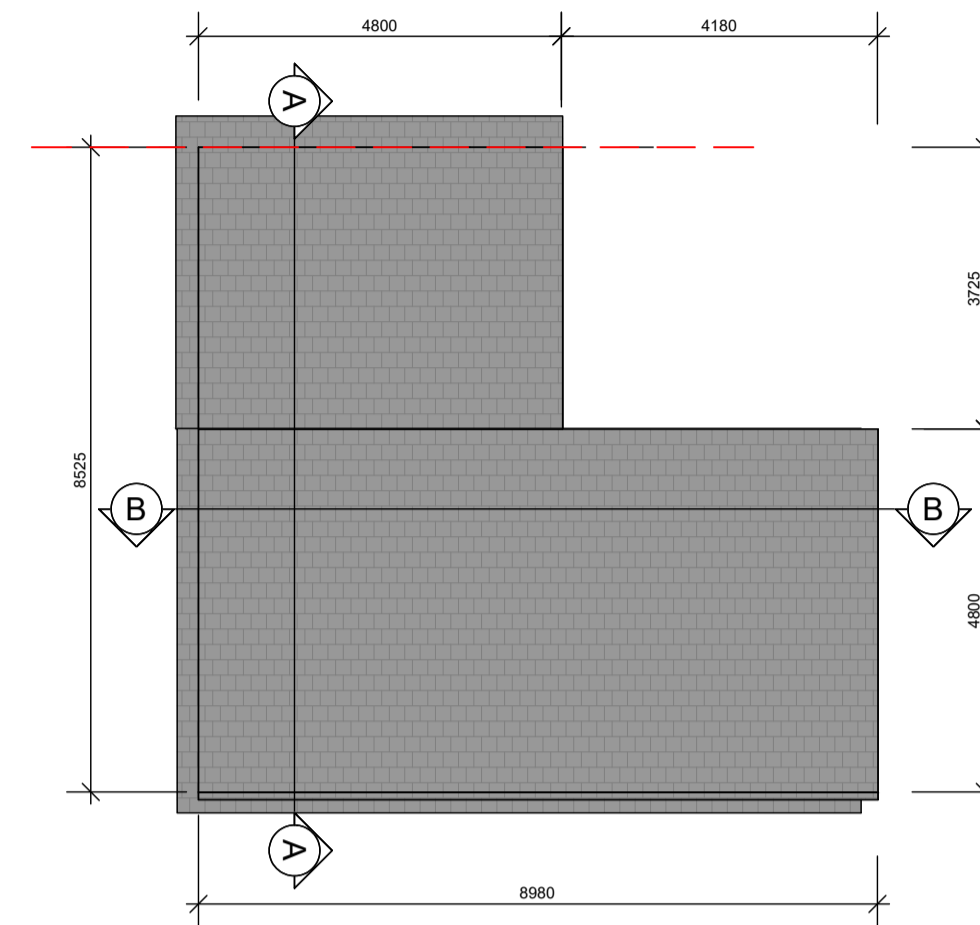
GENERAL NOTES:
 A. THIS DRAWING TO BE READ IN CONJUNCTION WITH ALL RELEVANT ARCHITECTURAL DRAWINGS THE SPECIFICATION AND ALL RELEVANT STANDARD DETAIL DRAWINGS.
 B. THIS DRAWING TO BE READ IN CONJUNCTION WITH ALL RELEVANT CIVIL, STRUCTURAL, MECHANICAL AND ELECTRICAL DRAWINGS TOGETHER WITH THE SPECIFICATIONS AND SCHEDULES.
 C. ALL DIMENSIONS IN MILLIMETERS. DO NOT SCALE FROM THIS DRAWING. USE FIGURED DIMENSIONS ONLY.
 D. CONTRACTOR MUST VERIFY ALL DIMENSIONS ON SITE BEFORE SETTING OUT COMMENCING WORK OR PRODUCING ANY SHOP DRAWINGS.



Ground Floor Plan

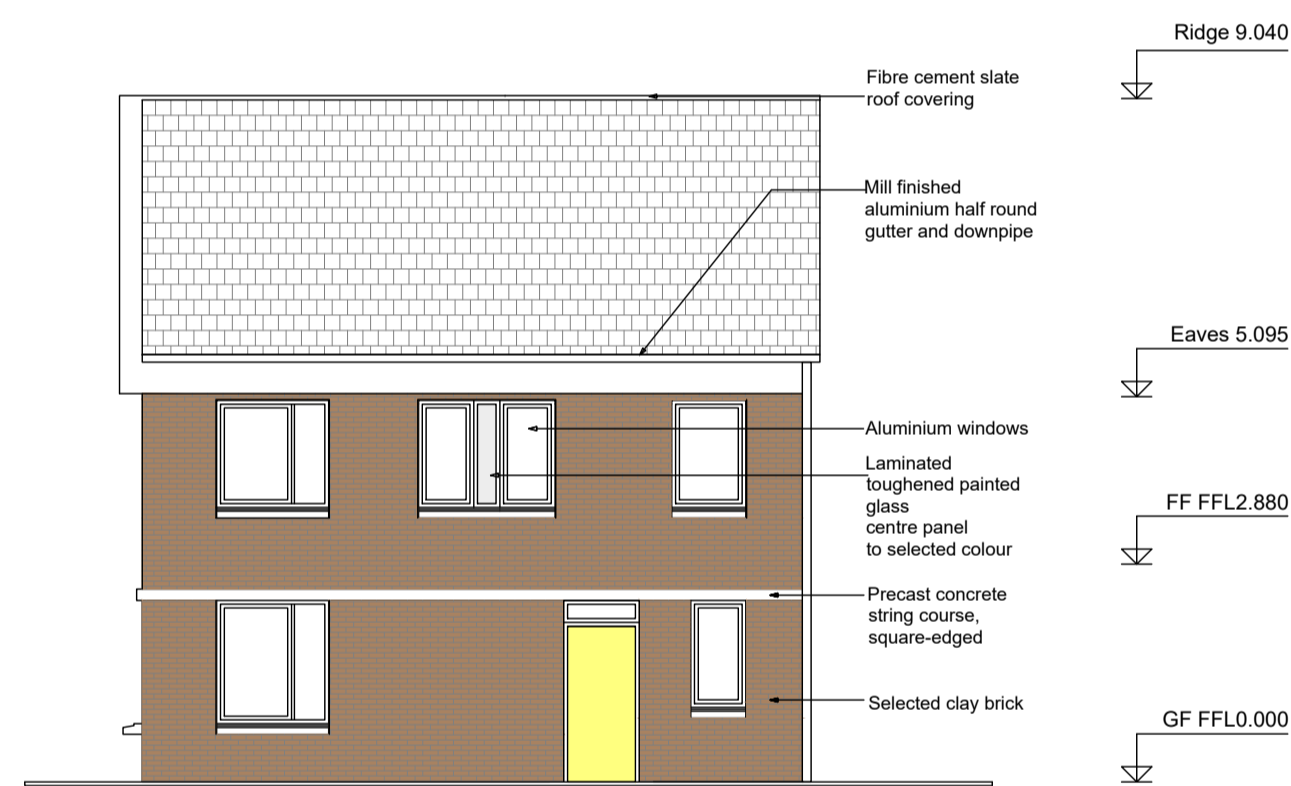


First Floor Plan

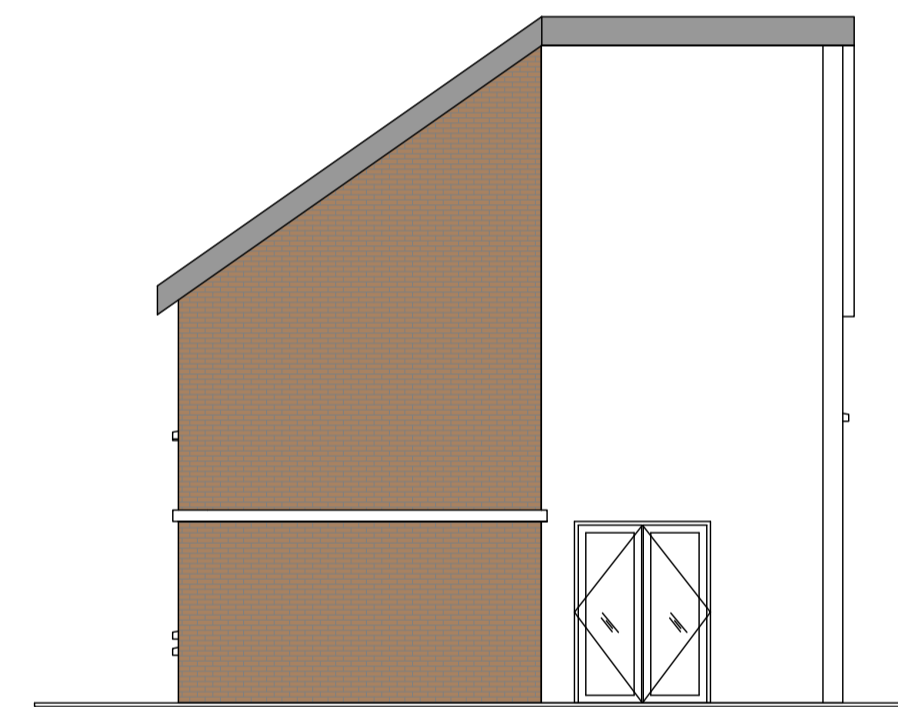


Roof Plan

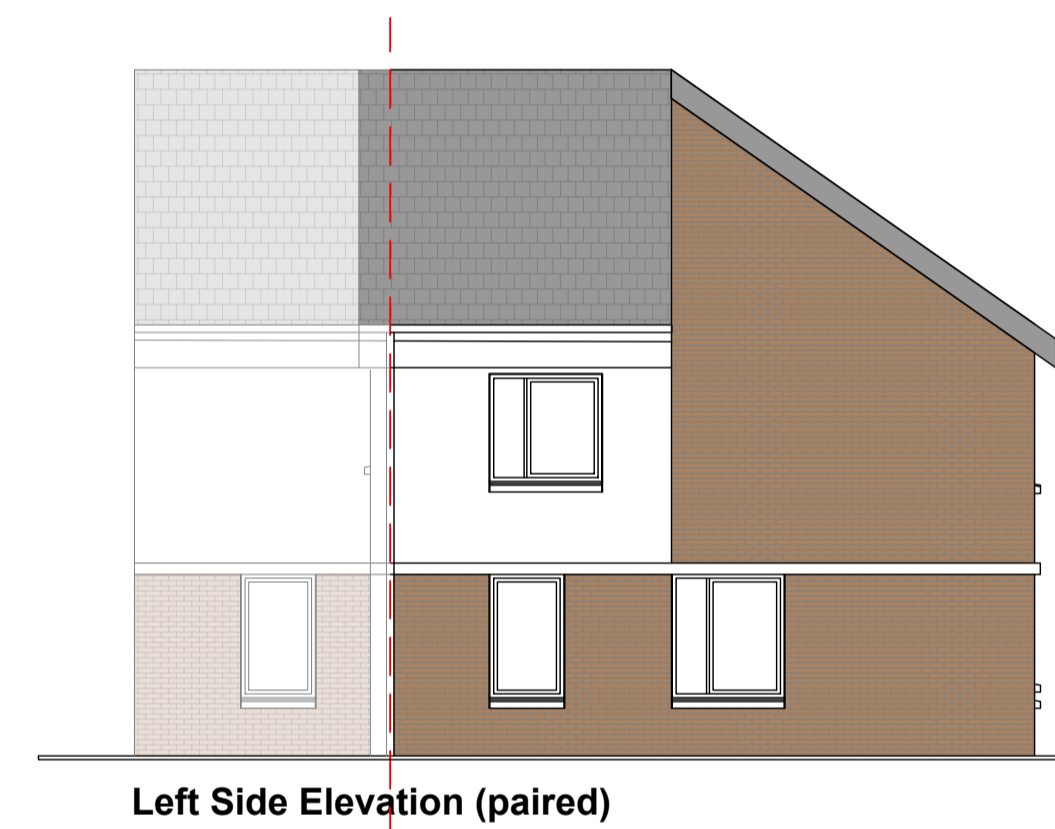
UNIT TYPE SCHEDULE OF ACCOMMODATION		
Unit Type	Room Name	Room Area
3B/5P Corner GIA 98.3 sq m	Liv/Kit/Din	35.255 sq m
	Hall	4.403 sq m
	WC	2.481 sq m
	St.	0.395 sq m
	St.	0.241 sq m
	St.	1.824 sq m
	St.	0.904 sq m
	Ensuite	2.22 sq m
	Bathroom	3.229 sq m
	Bedroom	7.179 sq m
	Corridor	3.365 sq m
	Bedroom	11.696 sq m
	St.	0.528 sq m
Bedroom	13.925 sq m	
Storage	1.567 sq m	
Aggregate Living	35.255 sq m	
Aggregate Bedroom	33.165 sq m	
Aggregate Storage	5.12 sq m	



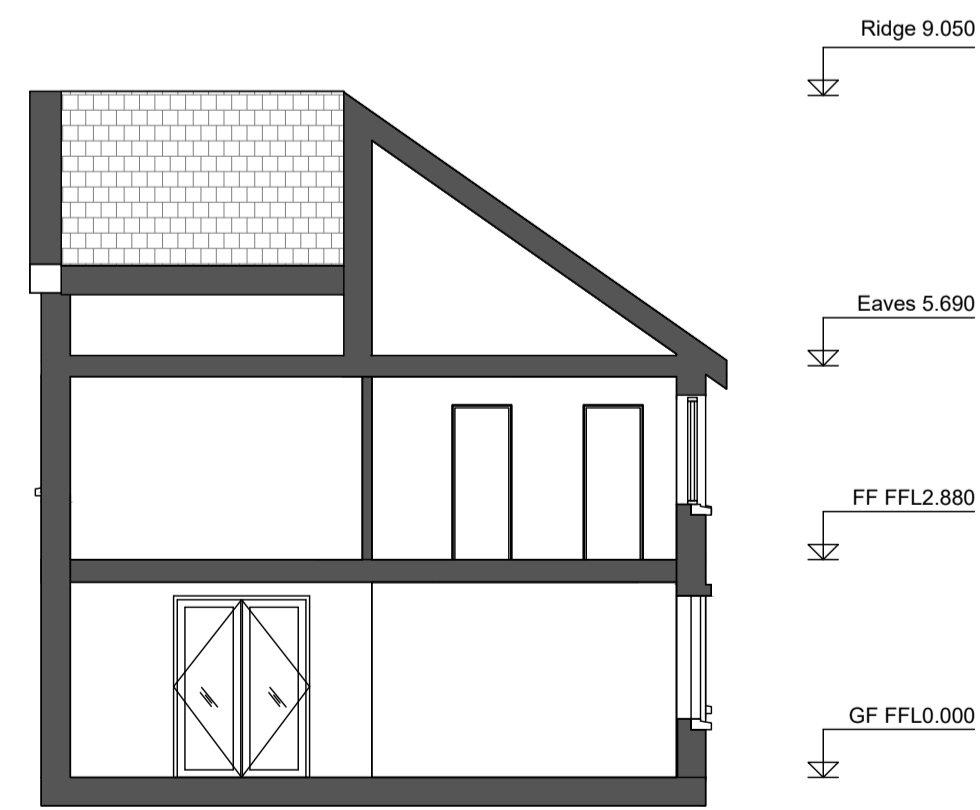
Front Elevation



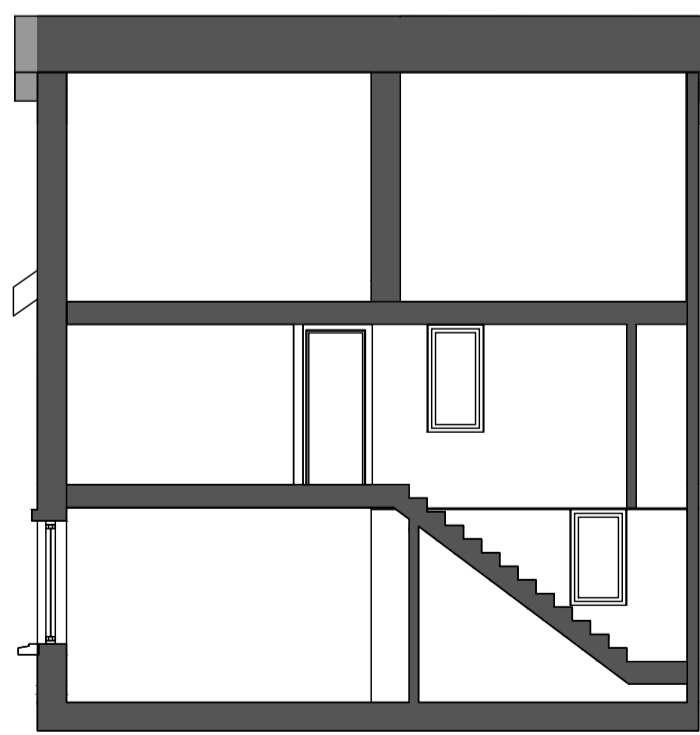
Right Side Elevation



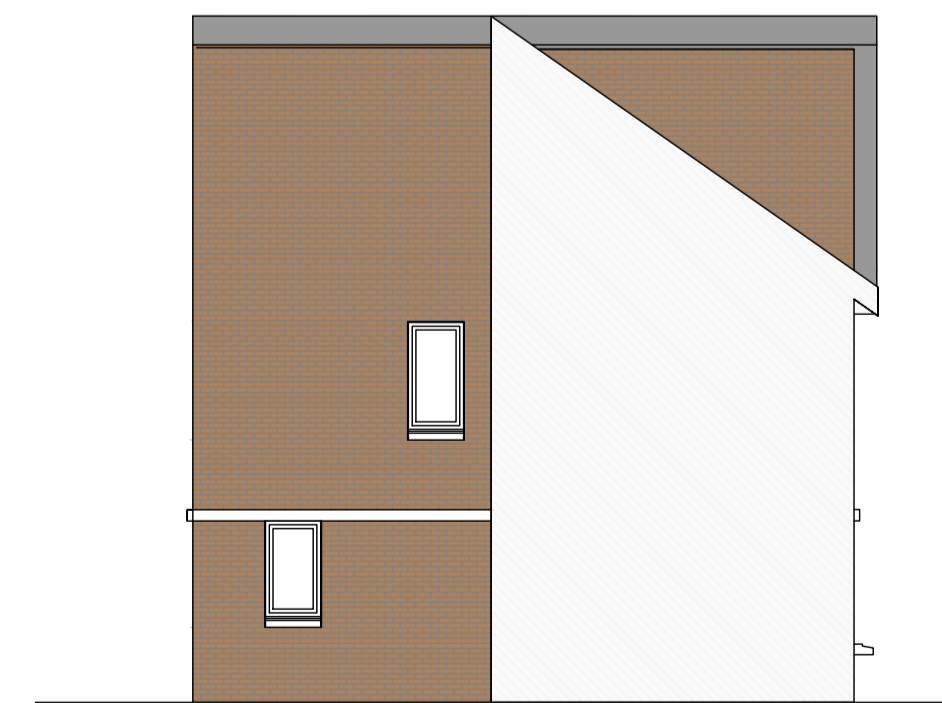
Left Side Elevation (paired)



Section A - A



Section B - B



Rear Elevation

Revisions	Date

eml
architects

20 Cruises Street Limerick V94 R6P9 Ireland
 63 Fitzwilliam Sq Dublin 2 D02 N938 Ireland
 (061) 312249 limerick@eml.ie
 (01) 6707677 dublin@eml.ie
 www.eml.ie

Client	Limerick City & County Council	Date	19/09/23
Job	Mungret Residential Development, Mungret, Co.Limerick	Scale @ A1	1:100
Title	3B/5P Corner House (Brick) Plans, Elevations & Section	Drawn	CS
		Checked	ML
Drawing No.	3479-EML-XXX-XX-DR-A-0108	Rev	