

- External storage Notes:
- 1: Selected clay face brick - Colour: 'Grey brick'
 - 2: Metal roofing system - Colour: 'Dark grey'
 - 3: Painted flat steel bar uprights - Colour: 'Dark grey'
 - 4: Galvanised steel SHS framed door with vertical uprights
 - 5: Double glazed vertical glass panes
 - 6: Existing stone wall
 - 7: Galvanised steel framed circular posted bike shed
 - 8: Painted steel SHS framed gates with vertical uprights

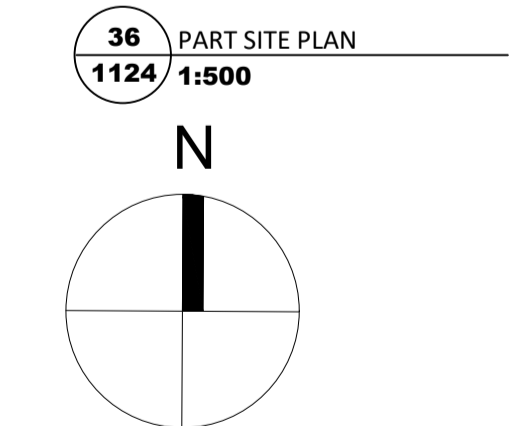
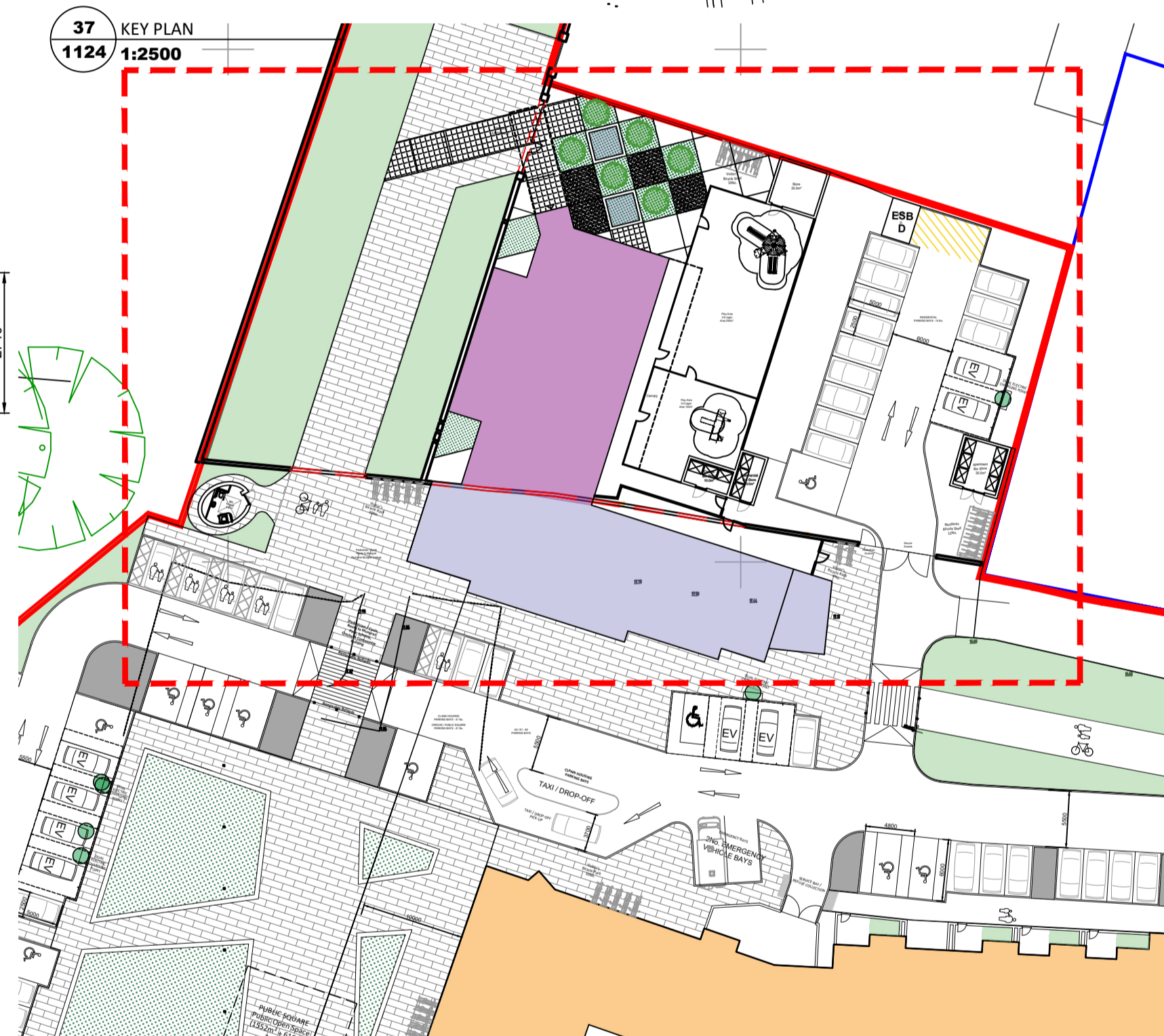
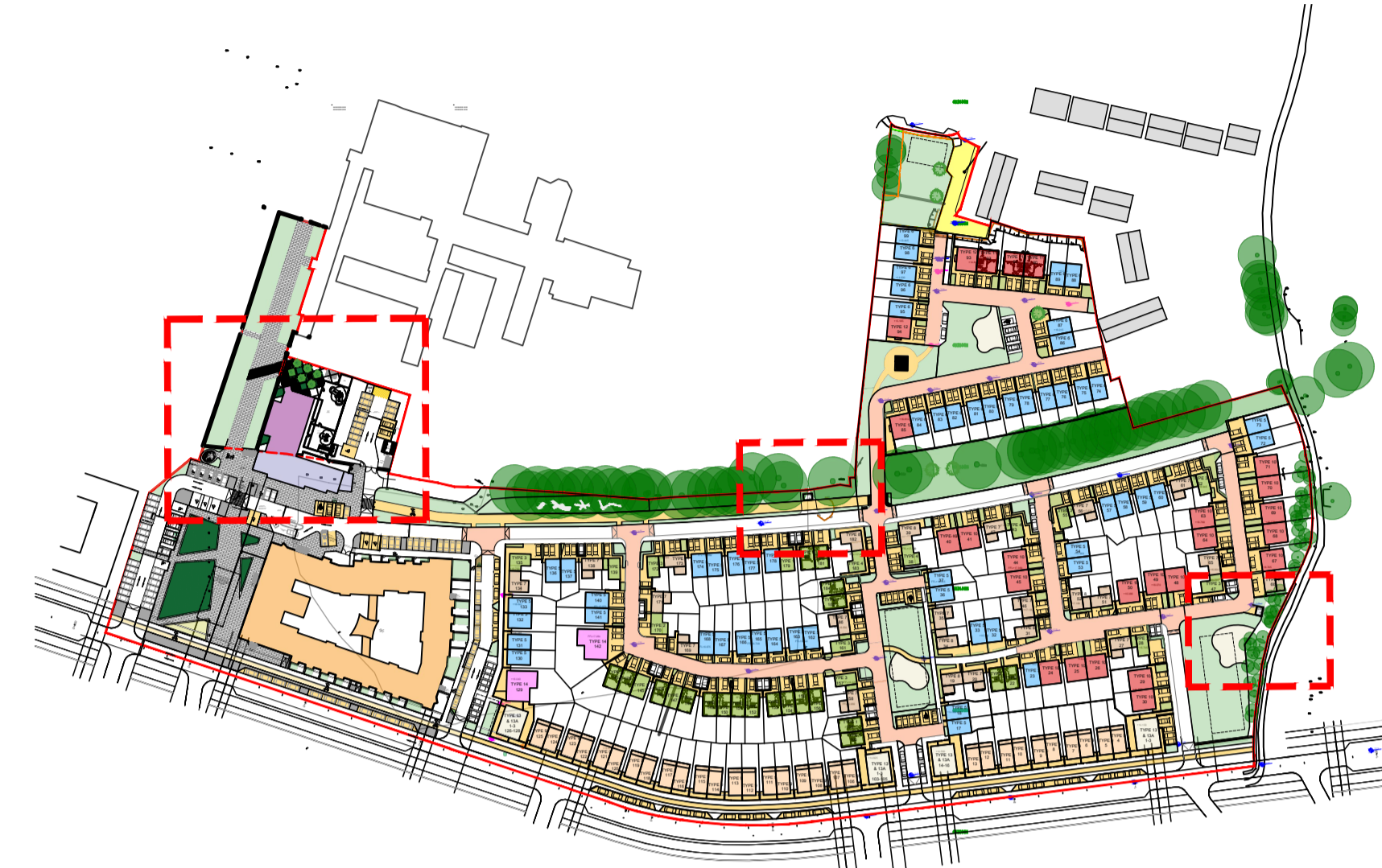
GENERAL NOTES:

A. THIS DRAWING TO BE READ IN CONJUNCTION WITH ALL RELEVANT ARCHITECTURAL DRAWINGS THE SPECIFICATION AND ALL RELEVANT STANDARD DETAIL DRAWINGS.

B. THIS DRAWING TO BE READ IN CONJUNCTION WITH ALL RELEVANT CIVIL, STRUCTURAL, MECHANICAL AND ELECTRICAL DRAWINGS TOGETHER WITH THE SPECIFICATIONS AND SCHEDULES.

C. ALL DIMENSIONS IN MILLIMETERS. DO NOT SCALE FROM THIS DRAWING. USE FIGURED DIMENSIONS ONLY.

D. CONTRACTOR MUST VERIFY ALL DIMENSIONS ON SITE BEFORE SETTING OUT COMMENCING WORK OR PRODUCING ANY SHOP DRAWINGS.



Revisions	Date

20 Cruises street Limerick V94 R6P9 Ireland
 telephone (061) 312249 e-mail limerick@eml.ie
 63 Fitzwilliam sq Dublin 2 D02 N938 Ireland
 telephone (01) 6707677 e-mail dublin@eml.ie

Client	Limerick City & County Council	Date	05/11/2023
Job	Mungret Residential Development, Mungret, Co.Limerick	Scale @ A1	1:100
Drawn	CS	Checked	ML
Title	Public Toilet, External stores & ESb Kiosk, Plan, Section, Elevation Part Site Plan	Drawing No.	3470-EML-XX-XX-DR-A-1124
		Rev	