

GENERAL NOTES:  
 A. THIS DRAWING TO BE READ IN CONJUNCTION WITH ALL RELEVANT ARCHITECTURAL DRAWINGS THE SPECIFICATION AND ALL RELEVANT STANDARD DETAIL DRAWINGS.  
 B. THIS DRAWING TO BE READ IN CONJUNCTION WITH ALL RELEVANT CIVIL, STRUCTURAL, MECHANICAL AND ELECTRICAL DRAWINGS TOGETHER WITH THE SPECIFICATIONS AND SCHEDULES.  
 C. ALL DIMENSIONS IN MILLIMETERS. DO NOT SCALE FROM THIS DRAWING. USE FIGURED DIMENSIONS ONLY.  
 D. CONTRACTOR MUST VERIFY ALL DIMENSIONS ON SITE BEFORE SETTING OUT COMMENCING WORK OR PRODUCING ANY SHOP DRAWINGS.



1 3D IMAGE 13 - SOUTH WEST VIEW - CRECHE & COMMUNITY FACILITY VIEW FROM SQUARE S1  
 1605 / n.t.s.



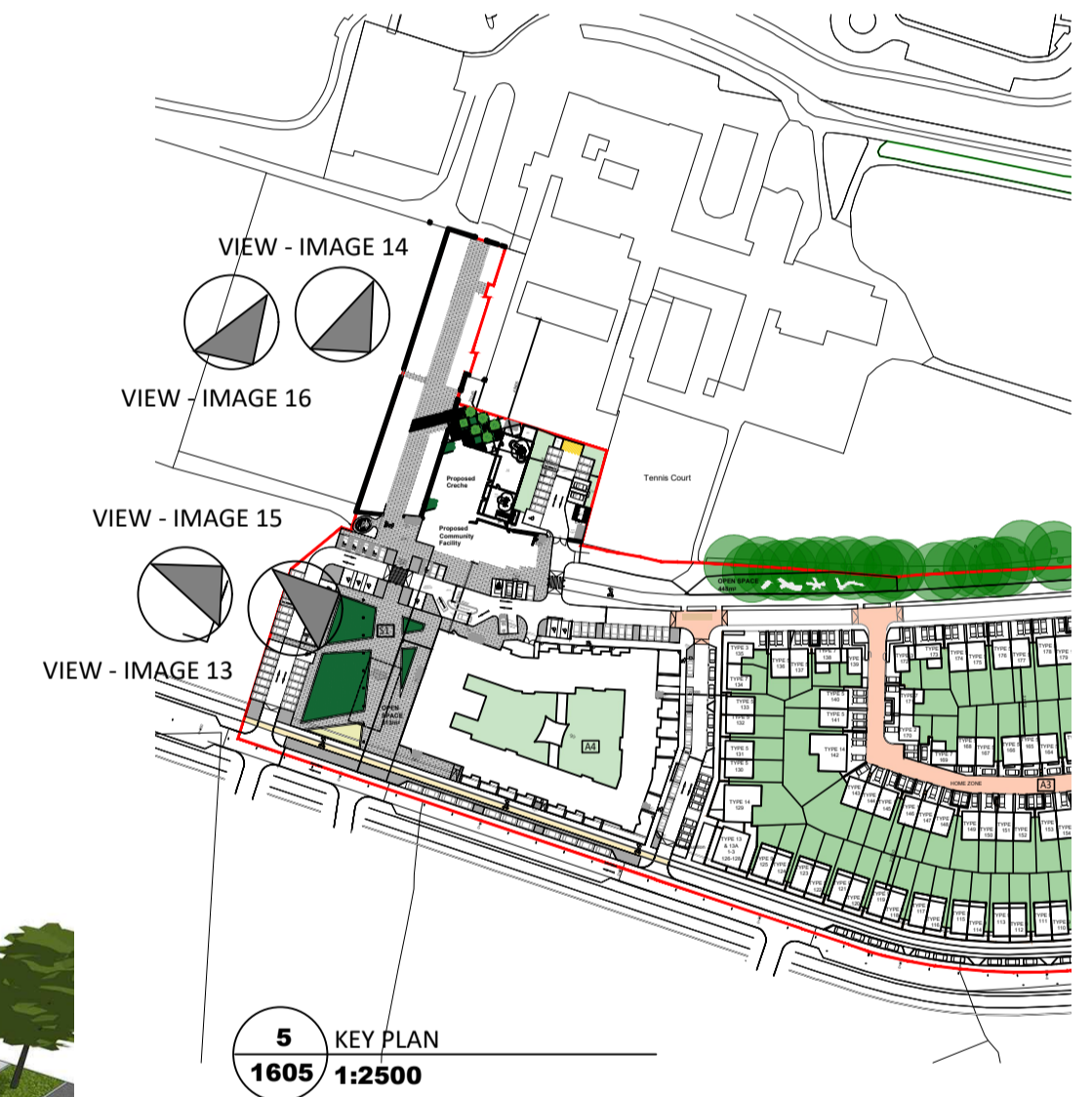
2 3D IMAGE 14 - WEST VIEW CRECHE ENTRANCE  
 1605 / n.t.s.



3 3D IMAGE 15 - SOUTH EAST VIEW - CRECHE & COMMUNITY FACILITY  
 1605 / n.t.s.



4 3D IMAGE 16 - WEST VIEW OF CRECHE  
 1605 / n.t.s.



5 KEY PLAN  
 1605 / 1:2500

Revisions	Date

**e ml**  
 architects

20 Cruises street Limerick V94 R6P9 Ireland  
 telephone (061) 312249 e-mail limerick@eml.ie

63 Fitzwilliam sq Dublin 2 D02 N938 Ireland  
 telephone (01) 6707677 e-mail dublin@eml.ie

<b>Client</b> Limerick City & County Council	<b>Date</b> 21/11/2023
<b>Job</b> Mungret Residential Development, Mungret, Co.Limerick	<b>Scale @ A1</b> NTS
<b>Title</b> Independent Living for Older Persons 3D Artist Impression-4	<b>Drawn</b> PM
	<b>Checked</b> ML
	<b>Drawing No.</b> 3479-EML-XX-XX-DR-A-1605
	<b>Rev</b>