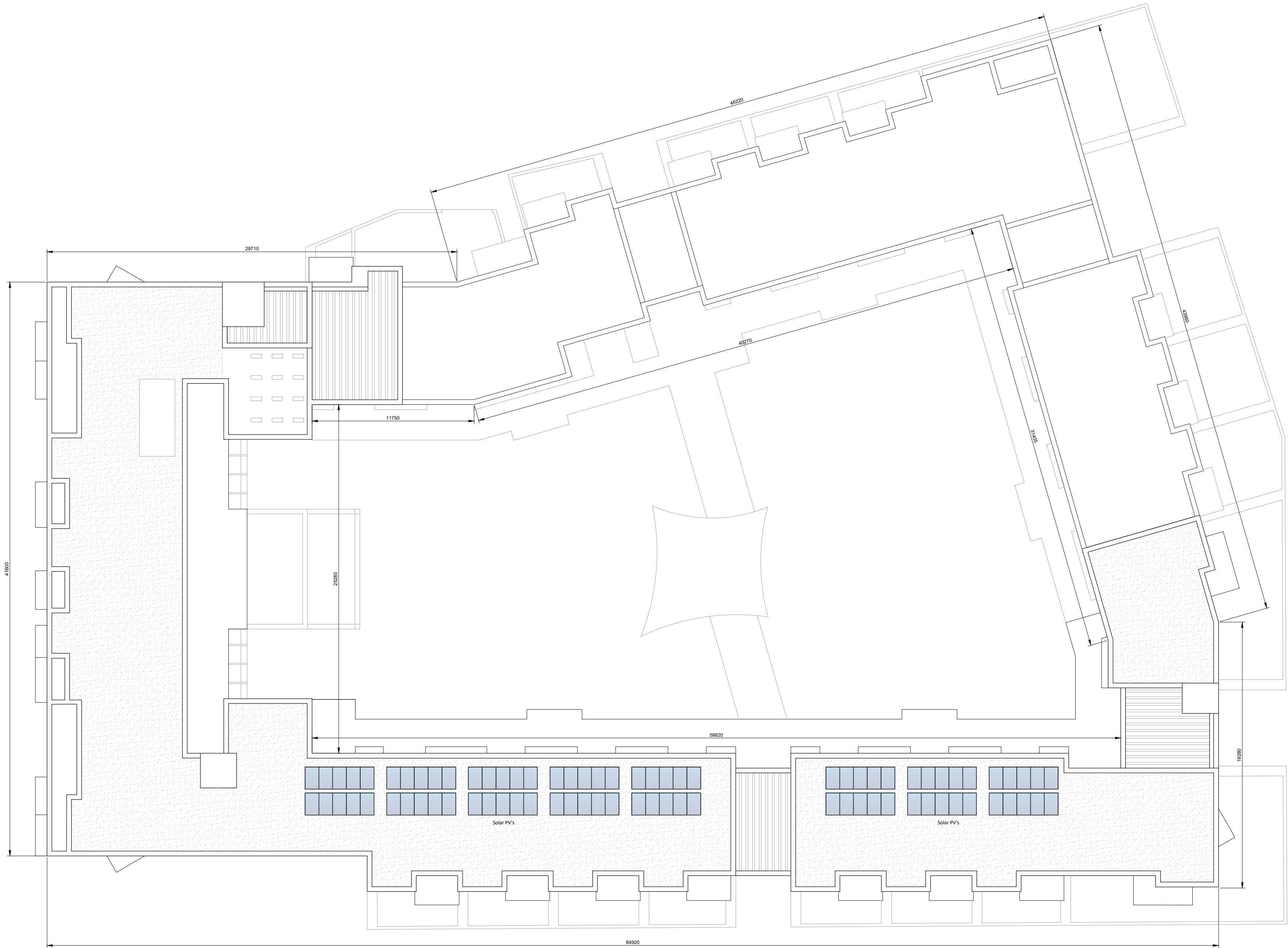


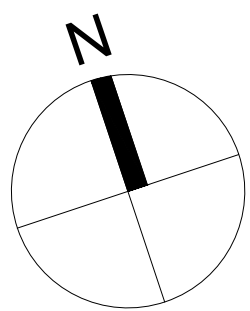
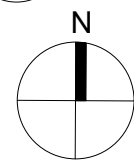
GENERAL NOTES:
A. THIS DRAWING TO BE READ IN CONJUNCTION WITH ALL RELEVANT ARCHITECTURAL DRAWINGS THE SPECIFICATION AND ALL RELEVANT STANDARD DETAIL DRAWINGS.
B. THIS DRAWING TO BE READ IN CONJUNCTION WITH ALL RELEVANT CIVIL, STRUCTURAL, MECHANICAL AND ELECTRICAL DRAWINGS TOGETHER WITH THE SPECIFICATIONS AND SCHEDULES.
C. ALL DIMENSIONS IN MILLIMETERS. DO NOT SCALE FROM THIS DRAWING. USE FIGURED DIMENSIONS ONLY.
D. CONTRACTOR MUST VERIFY ALL DIMENSIONS ON SITE BEFORE SETTING OUT COMMENCING WORK OR PRODUCING ANY SHOP DRAWINGS.





1 UPPER ROOF PLAN
1105 1:200



2 KEY PLAN
1105 1:2500



ISSUED FOR PLANNING	P1	2021-01-22
Revisions	Project Stage PLANNING	Date
<div><div>e m l</div><div>architects</div><div>SEÁN HARRINGTON ARCHITECTS</div></div>	<div><div></div><div>20 Cruises street 63 Fitzwilliam sq Limerick Dublin 2 V94 R6P9 D02 N938 Ireland</div></div>	<div><div>(061) 312249 e-mail limerick@eml.ie</div><div>(01) 6707677 e-mail dublin@eml.ie</div></div>
	Client Limerick City & County Council,	Date 21/08/2020
	Job Mungret Residential Development, Mungret, Limerick	Scale @ A1 1:200
	Title Independent Living for Older Persons Upper Roof Plan	Drawn DF Checked ML Drawing No. 3479-EML-XX-XX- DR-A-1105 Rev P1