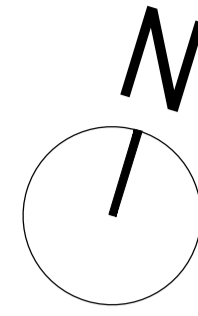


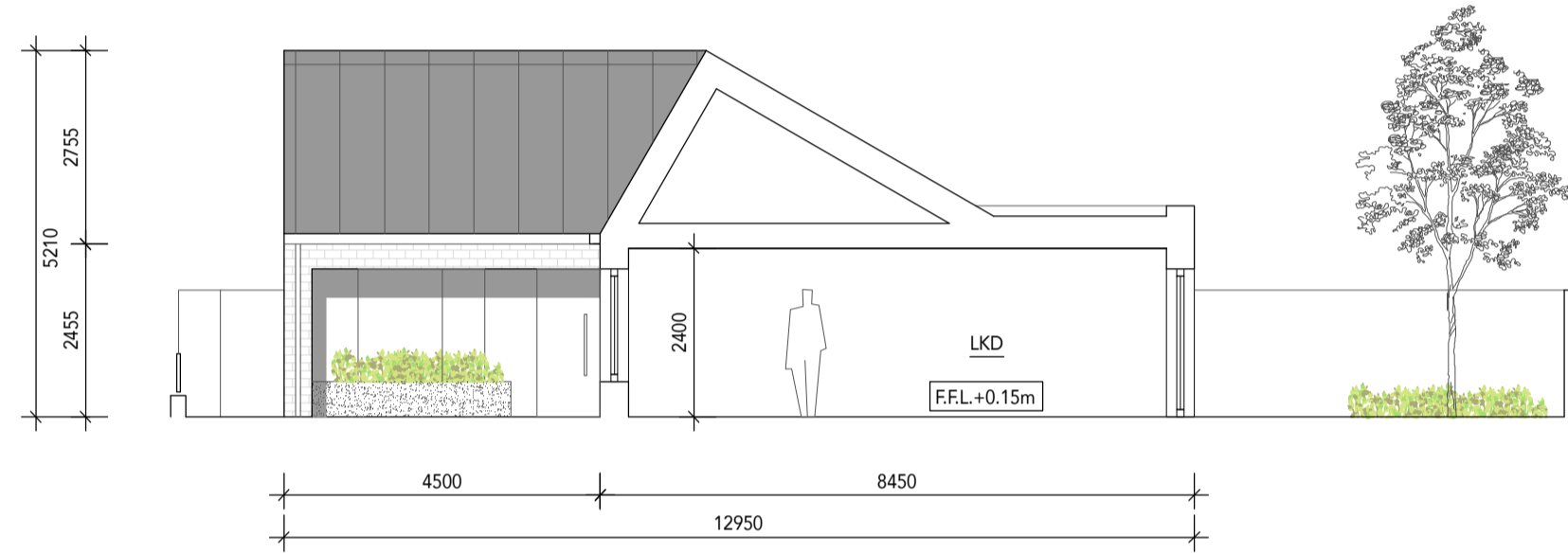
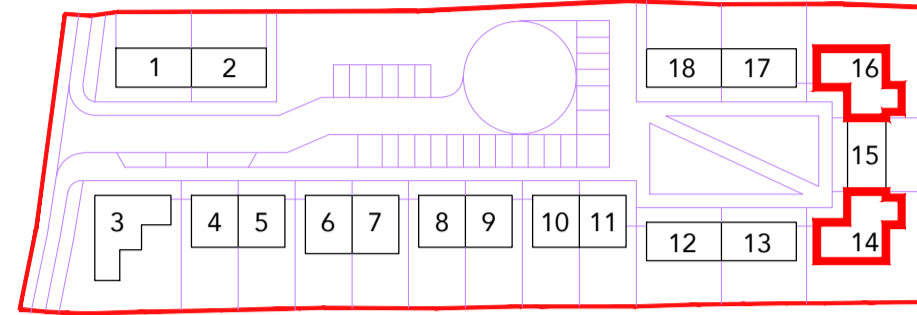
UNIT TYPE B

UNIT SCHEDULE OF ACCOMODATION

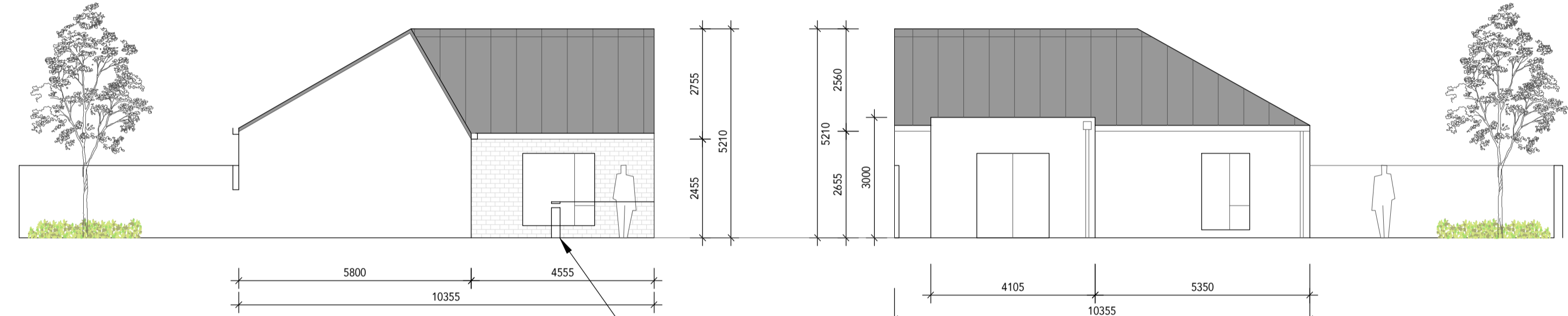
UNIT TYPE:	STOREYS:	DESCRIPTION:	UNITS:	DHPLG MINIMUM INTERNAL GFA:
B	1	4 PERSON 2 BED HOUSE	2 no. (UNITS 14, 16)	70.0sqm
PROPOSED INTERNAL GFA:	AGGREGATE LIVING AREA:	AGGREGATE BEDROOM AREA:	AGGREGATE STORAGE:	PRIVATE OPEN SPACE:
76.9 sqm (+10% over minimum)	30.1sqm	25.1sqm (13.1 + 12.0)	4.0sqm	EXCEEDS REQUIRED MINIMUM



UNIT KEY PLAN

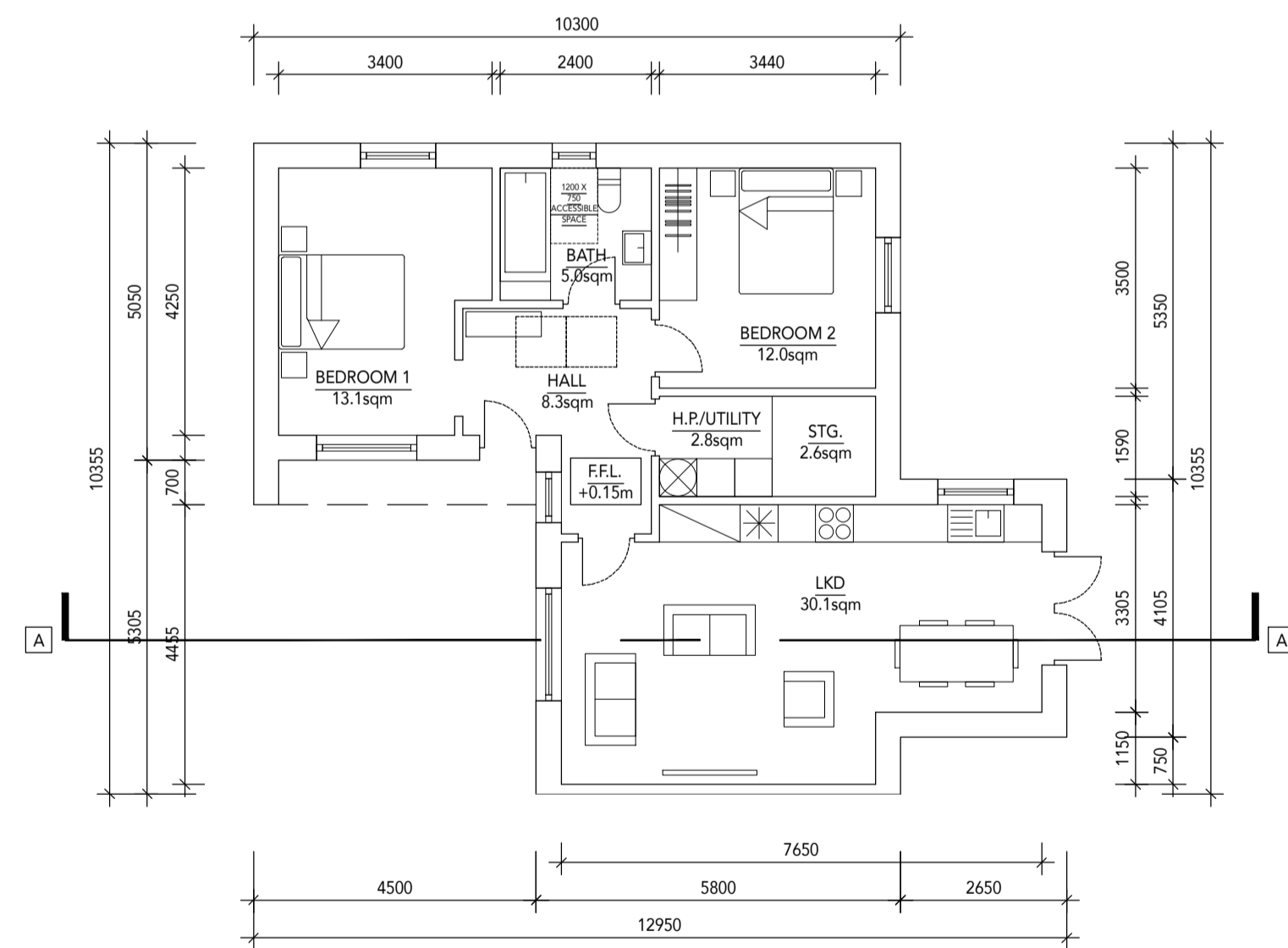


SECTION A-A



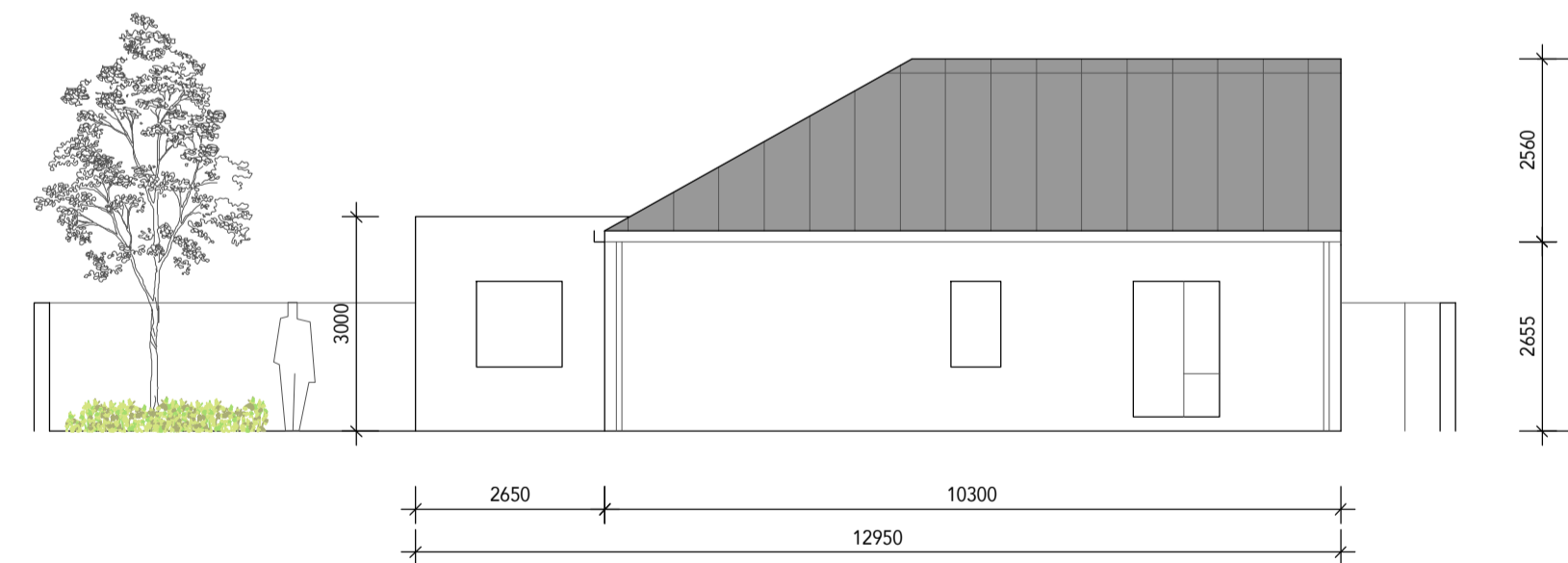
SIDE ELEVATION

REAR ELEVATION



GROUND FLOOR LAYOUT

FRONT GARDEN/PRIVACY STRIP BOUNDARY WALLS TO BE LOW BRICK WALLS WITH TOP RAILING AND MATCHING ACCESS GATES

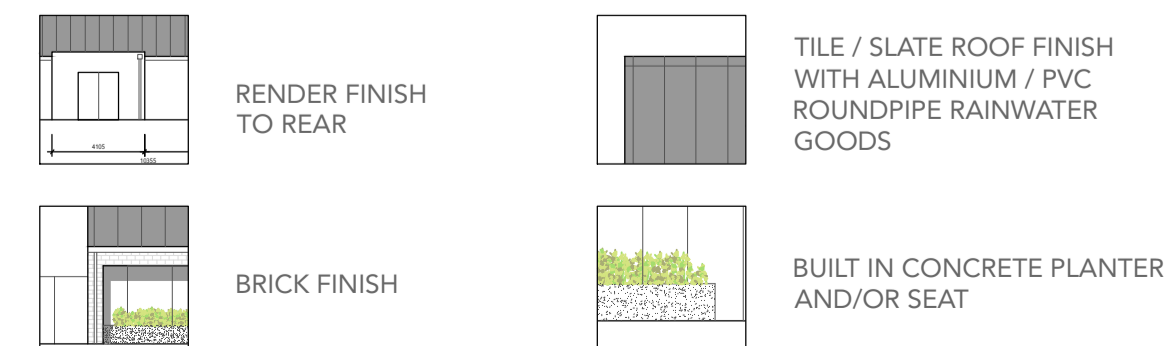


REAR ELEVATION

COPYRIGHT:
The design and details shown on this drawing are applicable to their project only and may not be reproduced in whole or in part or be used for any other project or purpose without the written permission of Limerick City and County Council with whom copyright resides.

DO NOT SCALE from this drawing. Use figured dimensions. Contractor to check all dimensions on site prior to commencement of works. Any discrepancies are to be referred to the ARCHITECT.

MATERIALS LEGEND:



REVISIONS

DATE	REV.	BY	CH.	DESCRIPTION
-	-	-	-	-

Limerick City & County Council
Design & Delivery Services
Merchants Quay
Limerick

PROJECT:
BROADFORD HOUSING
BROADFORD, COUNTY LIMERICK

STAGE:
PART 8 PLANNING APPLICATION

DRAWING TITLE:
PROPOSED UNIT TYPE B
GENERAL ARRANGEMENT DRAWINGS

DATE: MAY 2021
SCALE: 1:100 @ A1
DRAWN: BR
CHECKED: -
JOB No: 17059

DRAWING No: 17059-201
SHEET SIZE: A1
REVISION: -