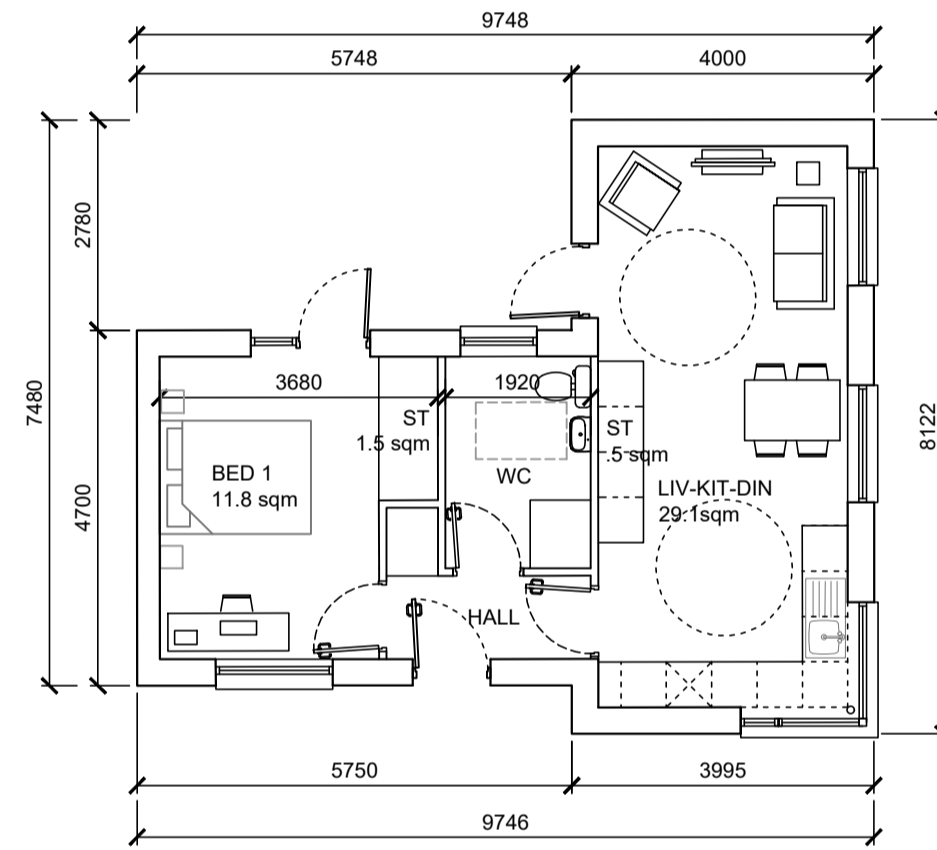
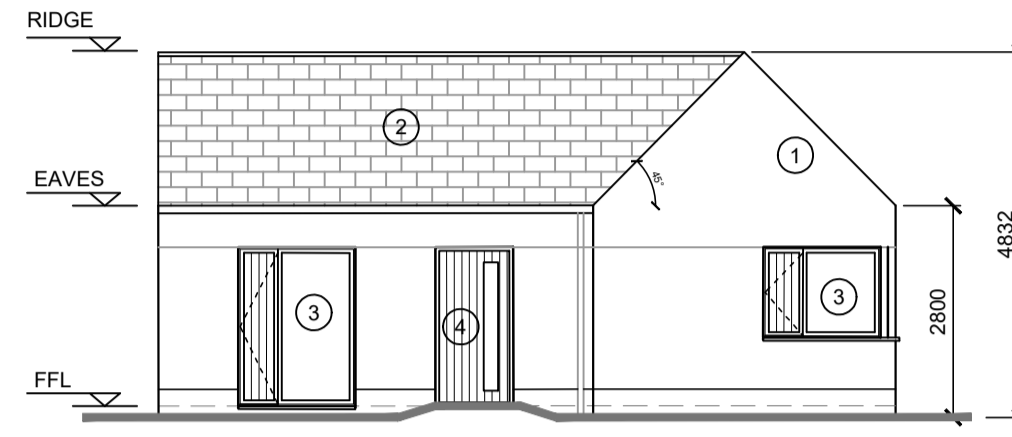


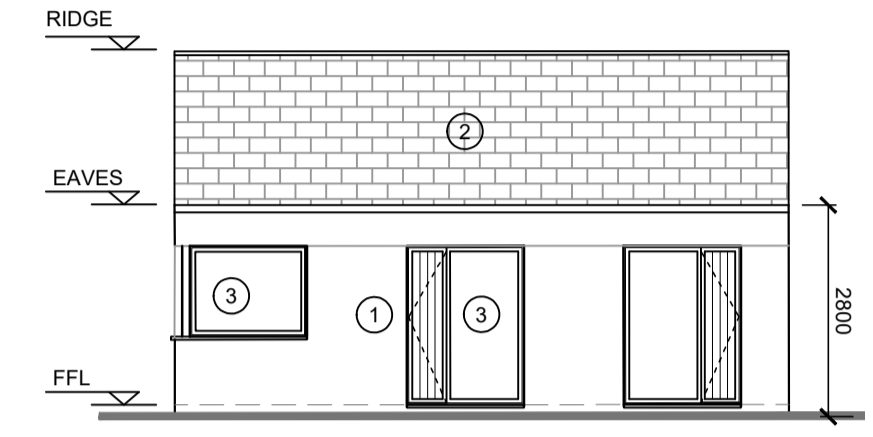
**GROUND FLOOR PLAN**  
AREA = 47.6 sqm  
HOUSE TYPE E



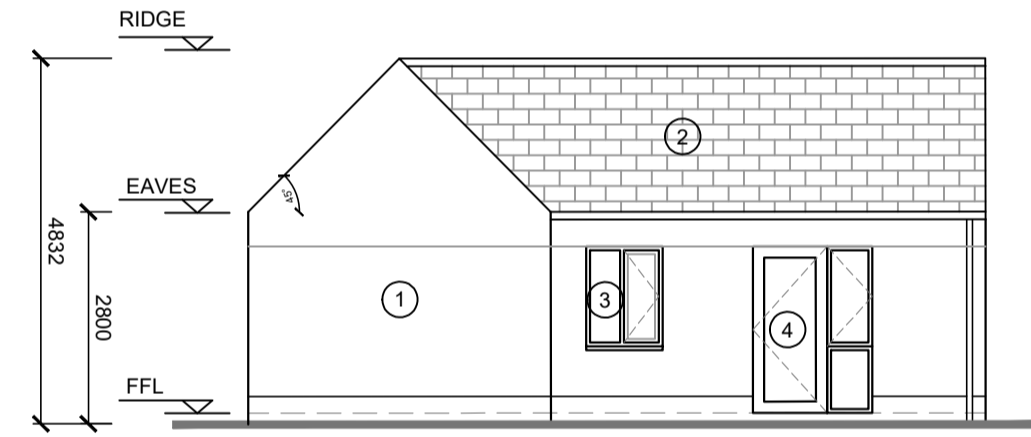
**GROUND FLOOR PLAN**  
AREA = 48 sqm  
HOUSE TYPE E



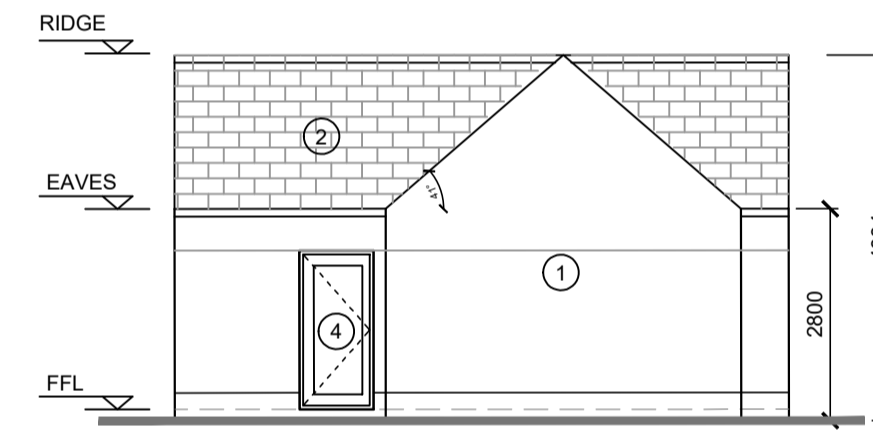
**FRONT ELEVATION**  
HOUSE TYPE E



**SIDE ELEVATION**  
HOUSE TYPE E



**REAR ELEVATION**  
HOUSE TYPE E



**SIDE ELEVATION**  
HOUSE TYPE E

<b>AREA SCHEDULE HOUSE TYPE B</b>	GROSS FLOOR AREA (M <sup>2</sup> )	MINIMUM MAIN LIVING ROOM AREA (M <sup>2</sup> )	AGGREGATE LIVING AREA (M <sup>2</sup> )	AGGREGATE BEDROOM AREA (M <sup>2</sup> )	STORAGE AREA (M <sup>2</sup> )
"Quality Housing for Sustainable Communities", Target Floor Areas 1 Bed/ 2P House (1 Storey)	44	11	23	11	2
House Type E	48	11	24	11.8	2

<b>FINISHES SCHEDULE</b>
1. SELECTED RENDER FINISH
2. ROOF FINISH - STANDING SEAM PVC
3. SELECTED ALUCLAD WINDOWS
4. SELECTED ALUCLAD DOORS

**REVISIONS**

NO.	DATE	REV. BY	CHECKED	DESCRIPTION

DATE REV. BY CHECKED DESCRIPTION

Comhairle Cathrach & Contae Luimnigh  
Limerick City & County Council  
**Limerick City and County Council**  
LA Housing Construction + Maintenance  
Merchants Quay  
Limerick

PROJECT:  
**CHURCH GLEN HOUSING,  
BALLYLANDERS,  
CO. LIMERICK.**  
STAGE:  
**PART 8 - PLANNING**

DRAWING TITLE:  
**HOUSE TYPE E  
GA DRAWINGS**

DATE: JAN 2022	DRAWING NO: 19092-133
SCALE: 1:100 @ A1	
DRAWN: DS	
CHECKED: DS	SHEET SIZE: A1
JOB NO: 19092	REVISION: *
FILE NAME:	