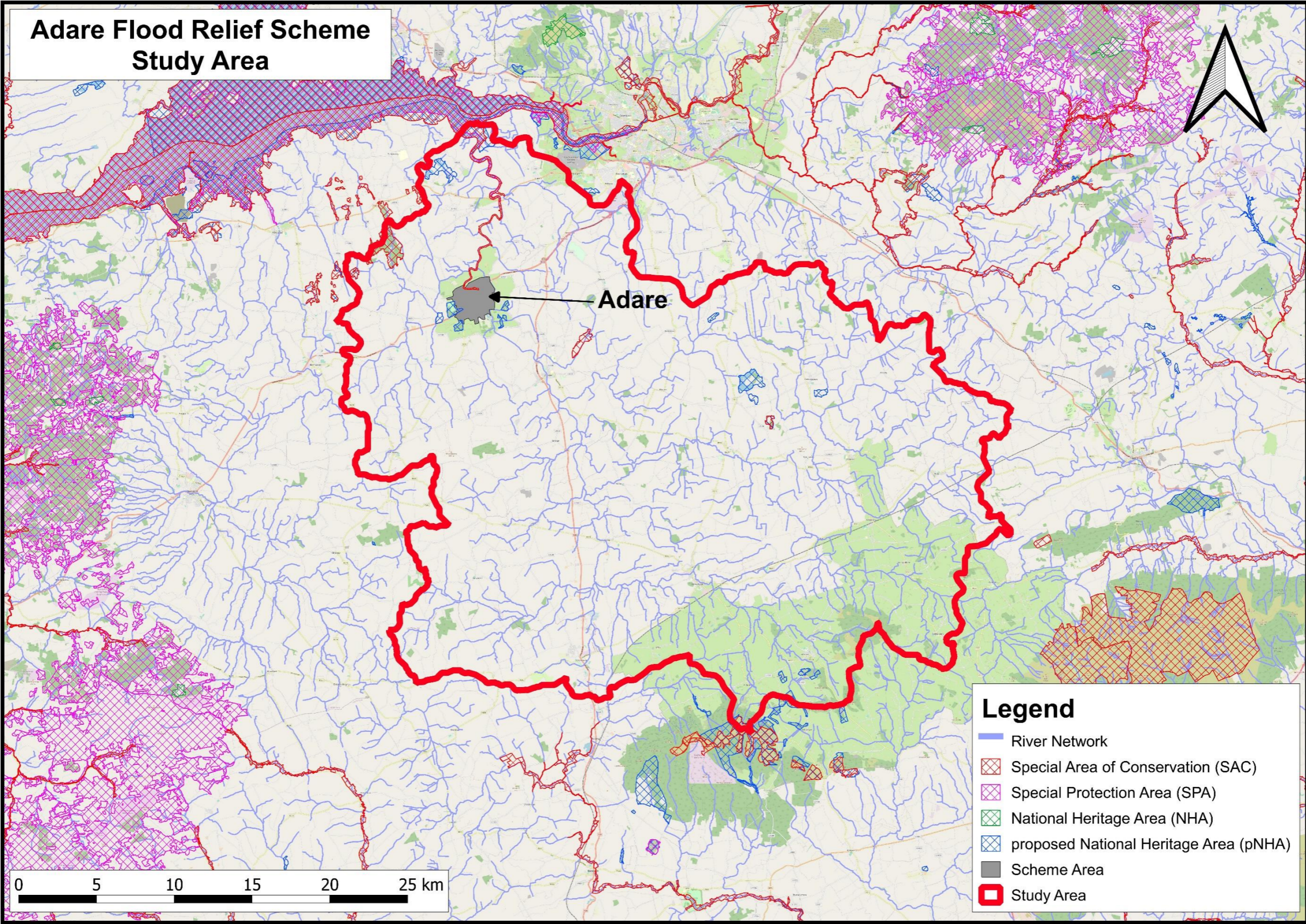
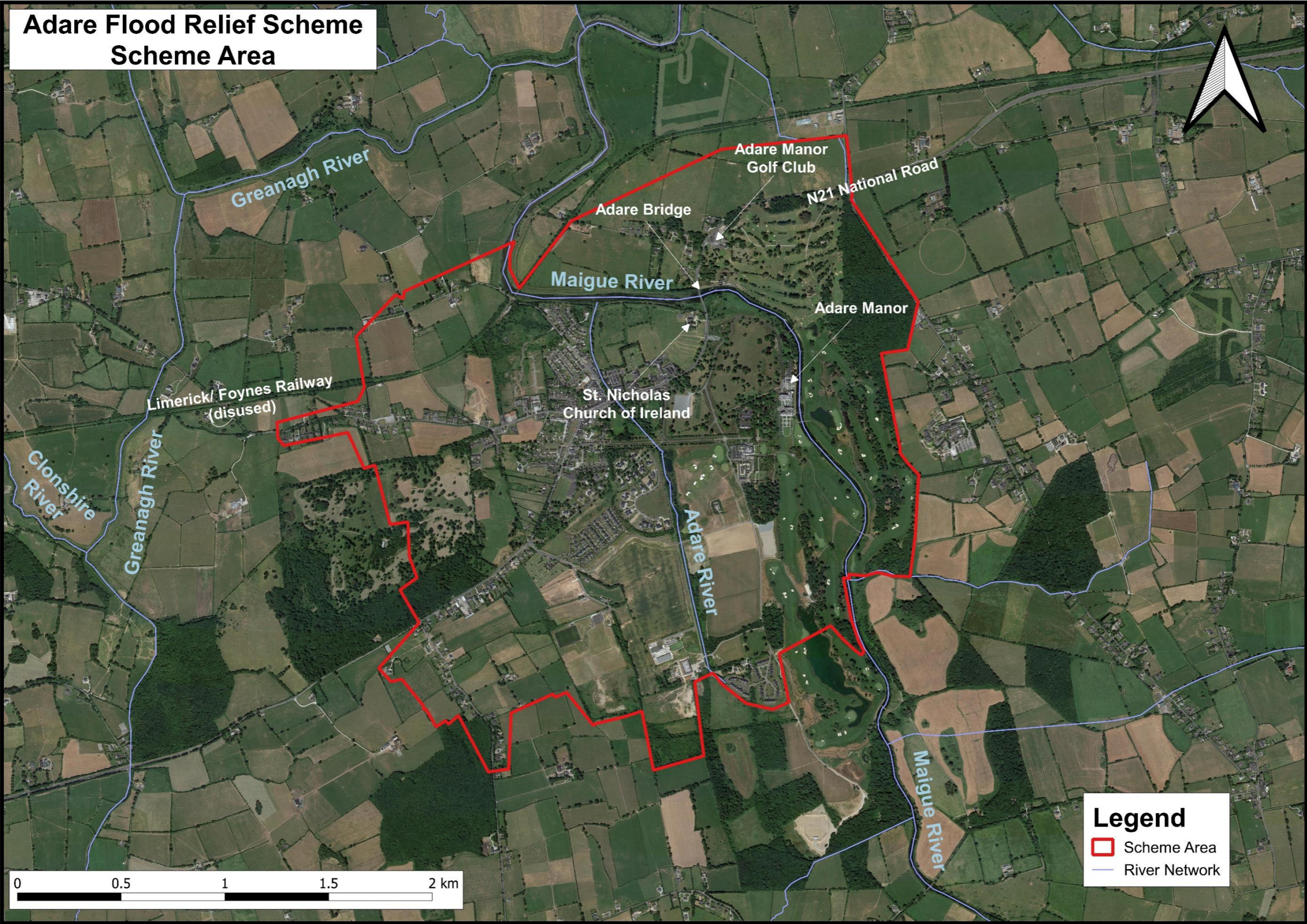


# Adare Flood Relief Scheme





# Adare Flood Relief Scheme





# Adare Flood Relief Scheme

## Environmental Constraints Study

An Environmental Constraints Study is currently being undertaken by the Project Environmental Consultants at Ryan Hanley. The purpose of the Constraints Study is to determine and document potential constraints which will aid the selection and design of the proposed flood alleviation measures.

### Primary Constraints:

A range of constraints are being considered under the following categories:

- **Biodiversity, Flora and Fauna**
- **Soils and Geology**
- **Water Quality**
- **Archaeological, Architectural and Cultural Heritage**
- **Land Use and Material Assets**
- **Air and Climate**
- **Landscape and Visual Amenity**
- **Tourism and Recreational Use**
- **Population and Human Health**





# Adare Flood Relief Scheme

## Public Involvement

The purpose of this initial Public Consultation is to:



- Provide information about the objectives of the scheme
- Outline the Design and Statutory processes
- Provide an opportunity for comment at a preliminary stage
- Gather information about Environmental Constraints
- Gather information on previous flood events and any issues related to flooding
- Obtain information on opportunities such as interaction with Public Realm Enhancement
- Obtain other information relevant to the Scheme

Your local knowledge and opinion are invaluable in helping us to deliver the most suitable Flood Relief Scheme for Adare. Members of the Engineering and Environmental team are available via email, phone and letter if you wish to tell us about any flood events or environmental issues etc. which are important to you. Contact details for the Project Team are listed in the Information Brochure and also at [www.AdareFRS.ie](http://www.AdareFRS.ie). A questionnaire is available for you to complete and return with your comments.

Consultation will be undertaken throughout the design process to ensure that the views of the public and other stakeholders are taken into account. Following this initial public consultation, there will be further opportunities for involvement through future Public Consultation days, where updates on the Scheme progress will be presented.



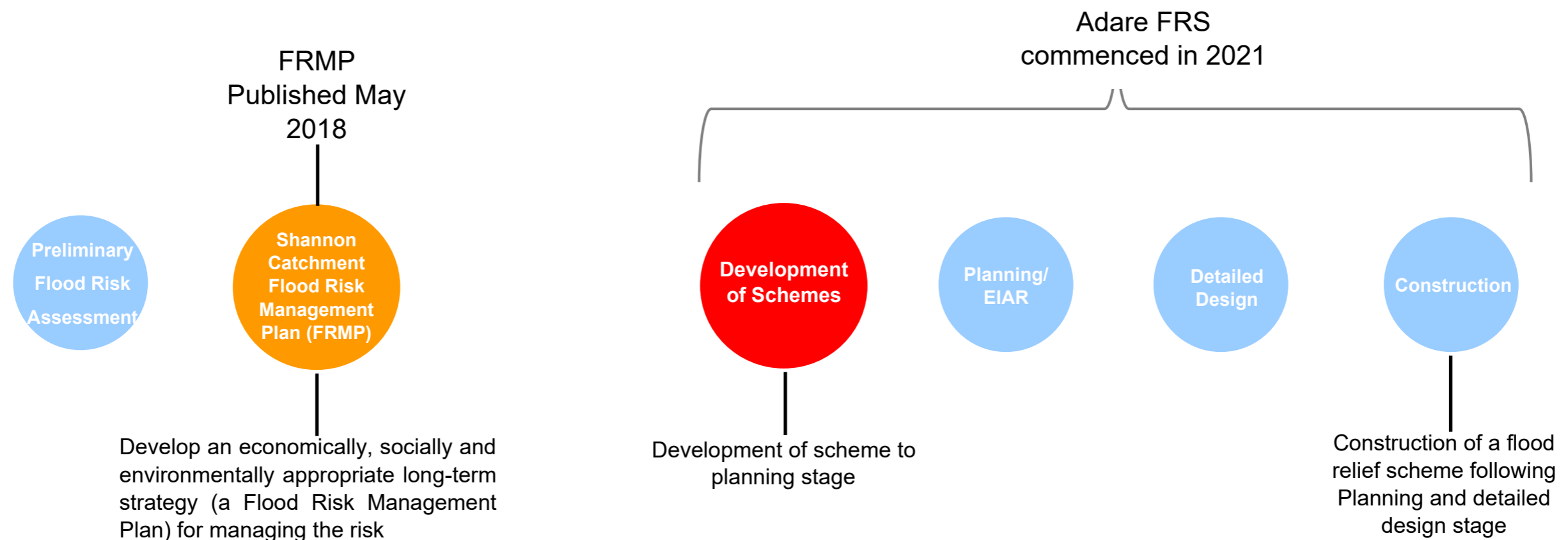
# Adare Flood Relief Scheme

## Scheme Objectives & Overview

The Office of Public Works (OPW) have carried out a Catchment Flood Risk Assessment and Management (CFRAM) Study for the Shannon catchment as part of a National CFRAM programme. The CFRAM Plan set out a range of potential flood risk management options for Adare.

Limerick City and County Council has now commissioned Ryan Hanley Consulting as Engineering and Environmental Consultants to assess, develop and design a viable and environmentally sustainable flood relief scheme for Adare and taking into account the objectives of the Adare Public Realm Strategy, including walking and cycling greenway provision if possible.

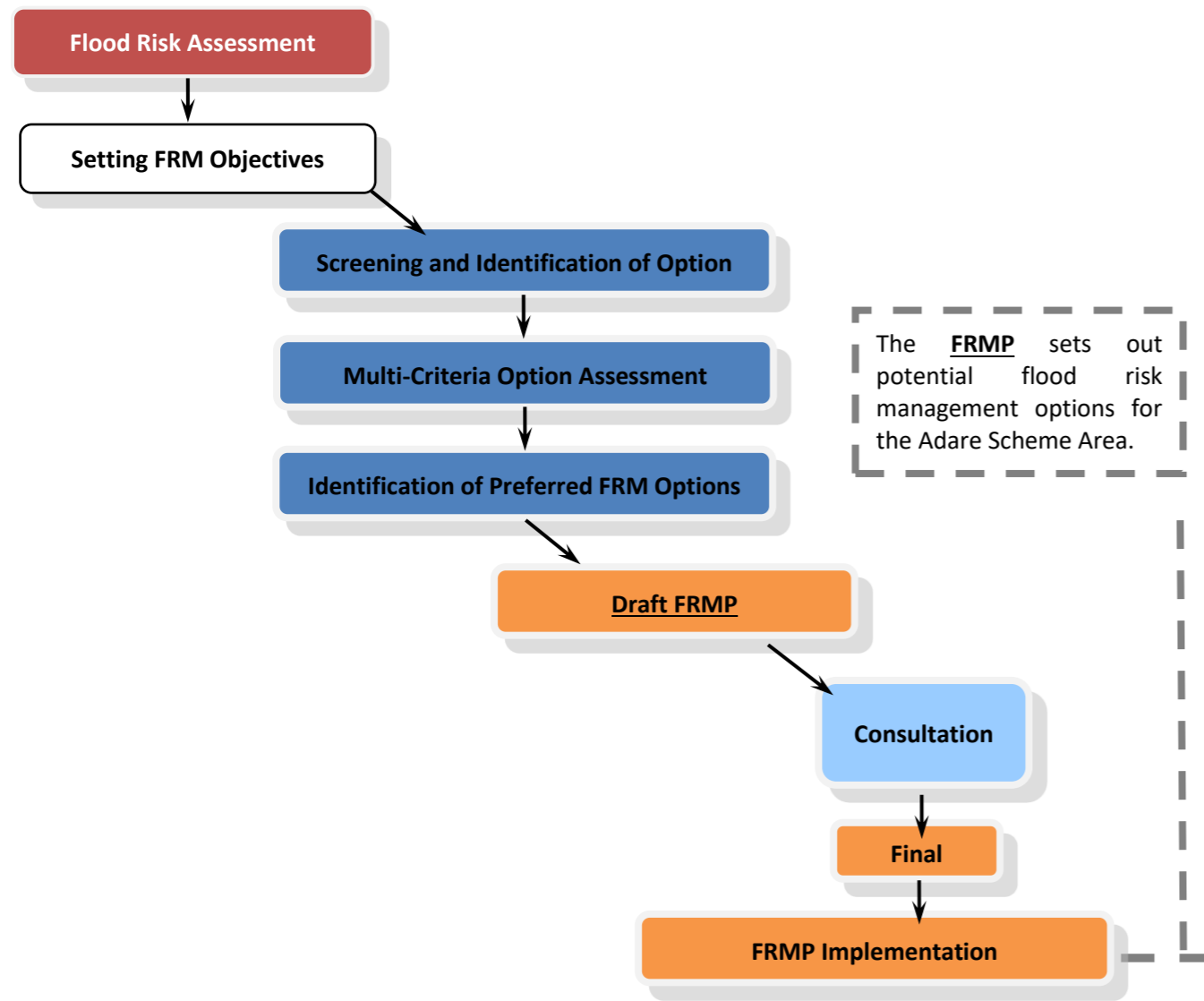
The Project Team includes Ryan Hanley working in partnership with the Limerick City and County Council and OPW. A Study Area and indicative Scheme Area have been identified and the initial stages of the Adare Flood Relief Scheme have commenced, including a Constraints Study and Preliminary Design Surveys. An indicative Flow chart showing the process from inception through to construction for a flood relief scheme is shown on the figure below:





# Adare Flood Relief Scheme

## Flood Risk Management Plan Process



## Shannon Catchment Flood Risk Assessment and Management (CFRAM) Study

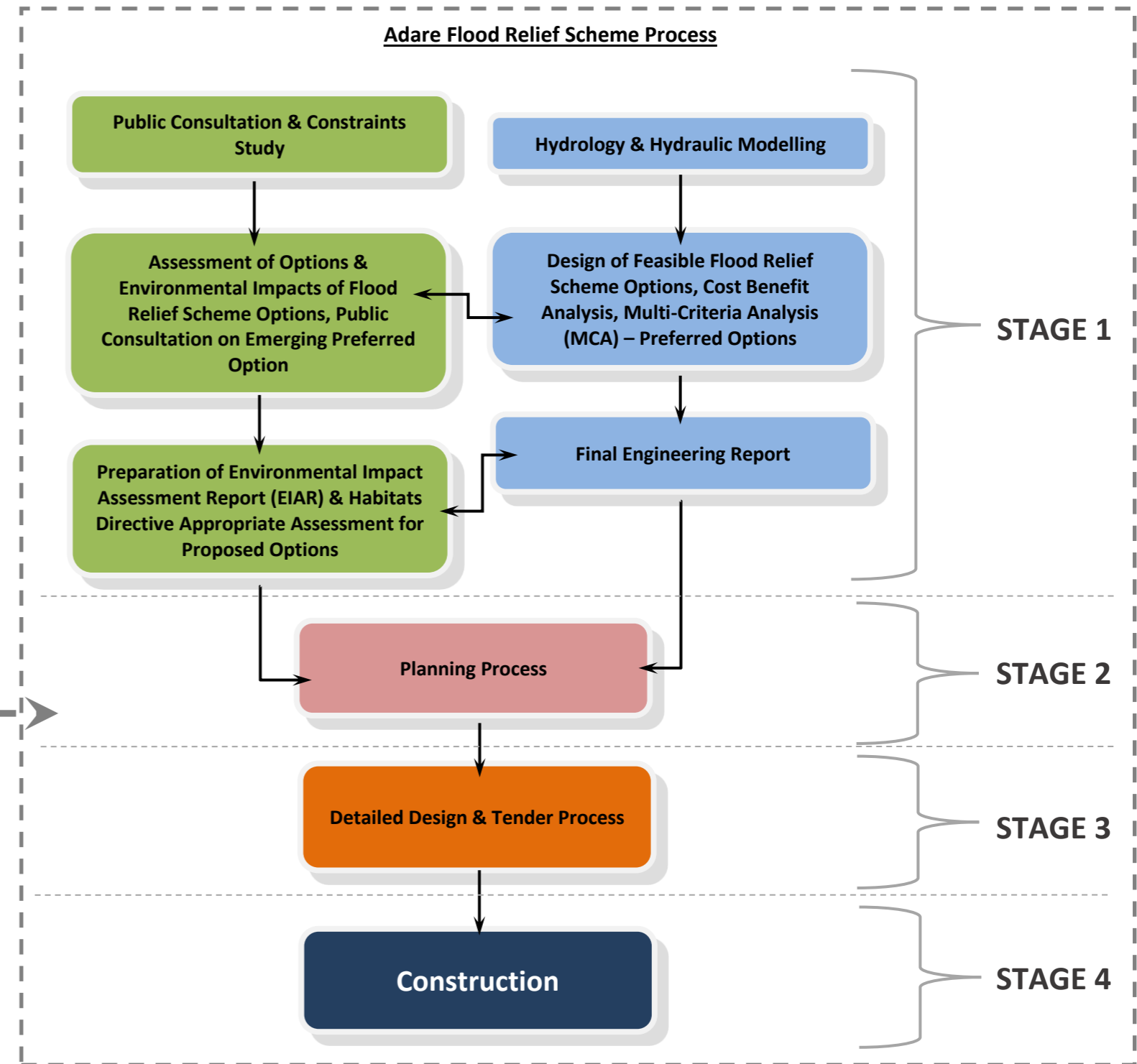
As part of the Catchment and Flood Risk Assessment and Management (CFRAM) Plan of the country, the Shannon Study was finalised in May 2018.

The Shannon CFRAM Study Area identified Adare as an Area of Further Assessment (AFA) due to its long history of flooding from the River Maigue and other local tributaries. This study comprised detailed hydrologic and hydraulic assessments of the current scenario of flood risk and the proposed flood relief options for Adare were determined in the Shannon Catchment Flood Risk Management Plan (FRMP).

Following on from the CFRAM study, the OPW in partnership with Limerick City and County Council have appointed Ryan Hanley Consulting to undertake the development and implementation of a Flood Relief Scheme for Adare.

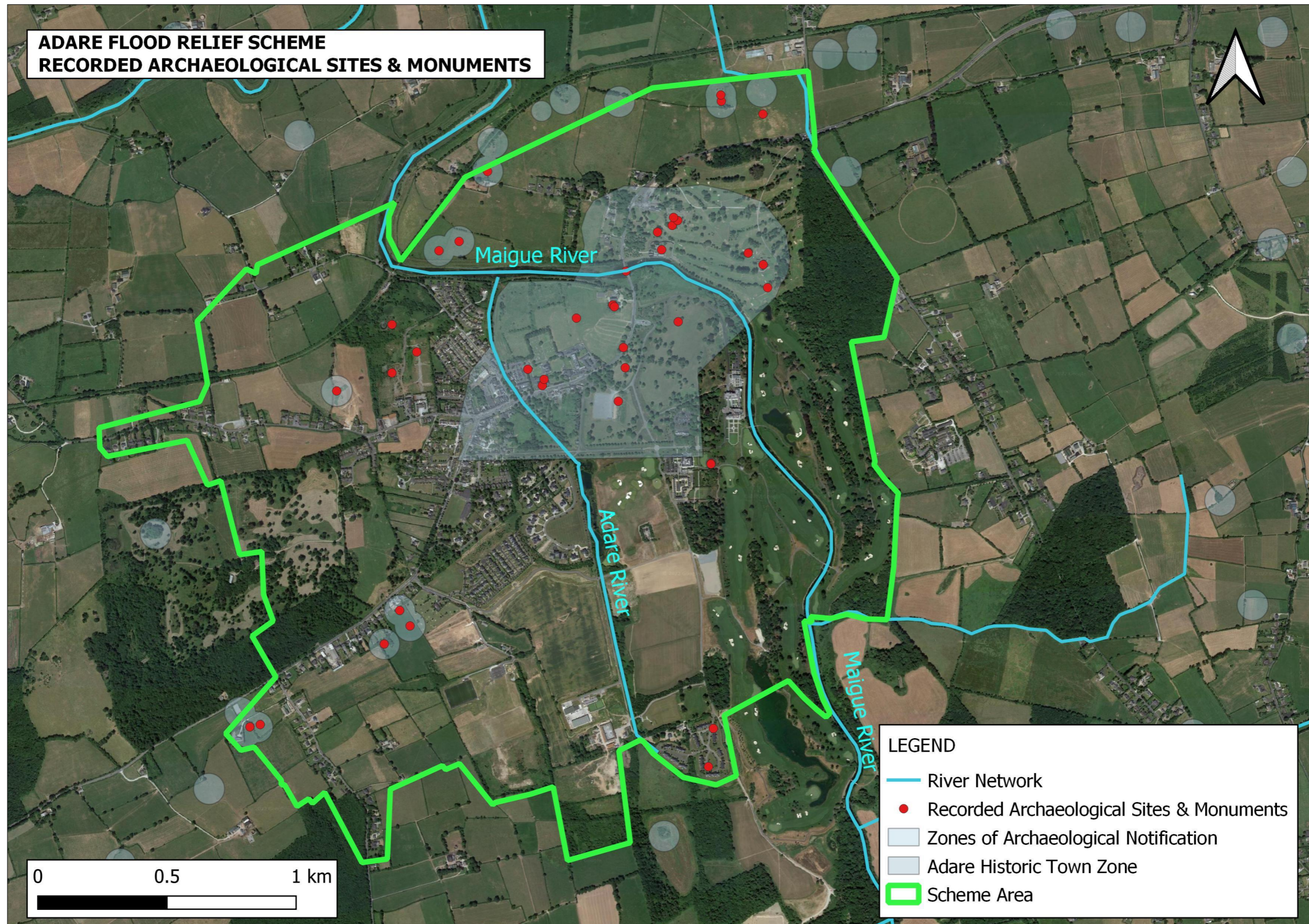
## Adare Flood Relief Scheme

The chart below shows how the Adare Flood Relief Scheme follows on from the Shannon CFRAM Plan and details the interaction between the Environmental (green) and Engineering Study (blue) for the Scheme.





**ADARE FLOOD RELIEF SCHEME  
RECORDED ARCHAEOLOGICAL SITES & MONUMENTS**

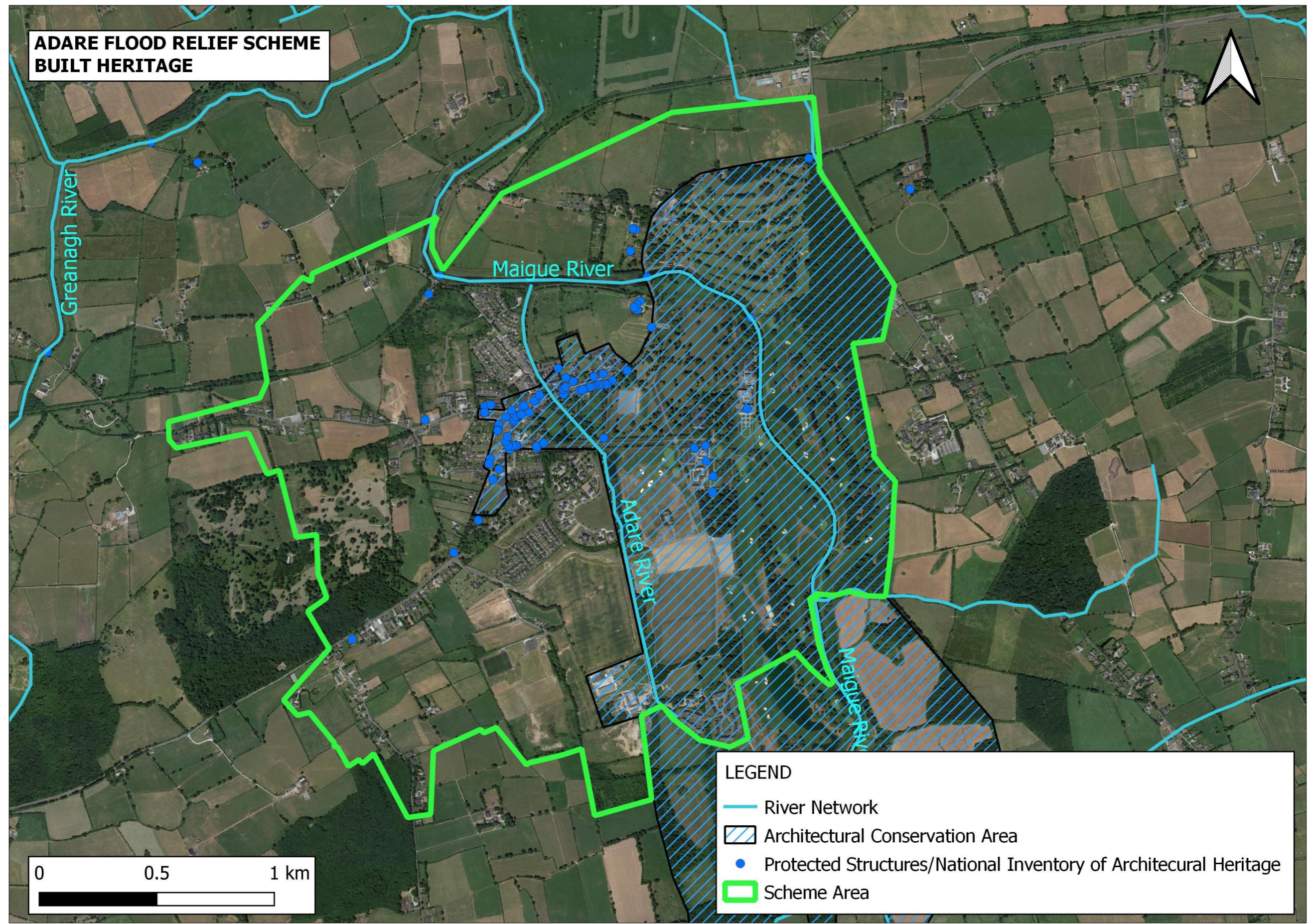


**LEGEND**

- River Network
- Recorded Archaeological Sites & Monuments
- Zones of Archaeological Notification
- Adare Historic Town Zone
- Scheme Area



**ADARE FLOOD RELIEF SCHEME  
BUILT HERITAGE**

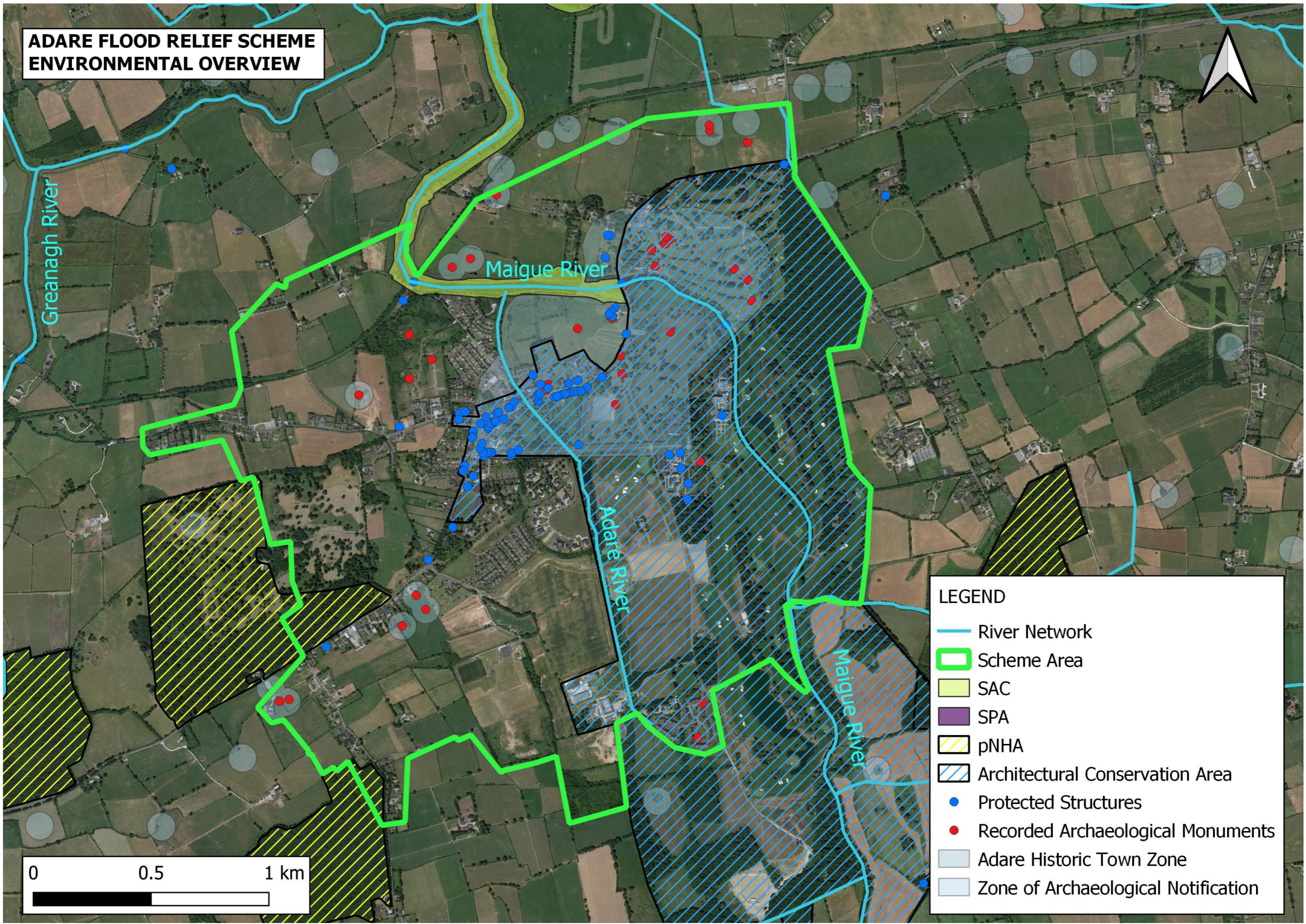


**LEGEND**

- River Network
- Architectural Conservation Area
- Protected Structures/National Inventory of Architectural Heritage
- Scheme Area

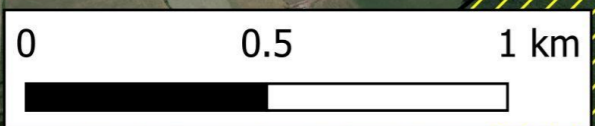


**ADARE FLOOD RELIEF SCHEME  
ENVIRONMENTAL OVERVIEW**



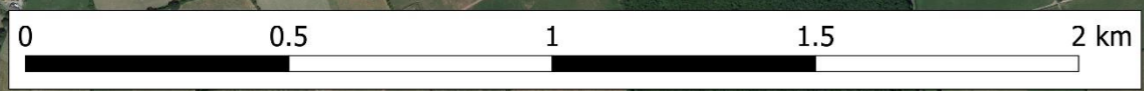
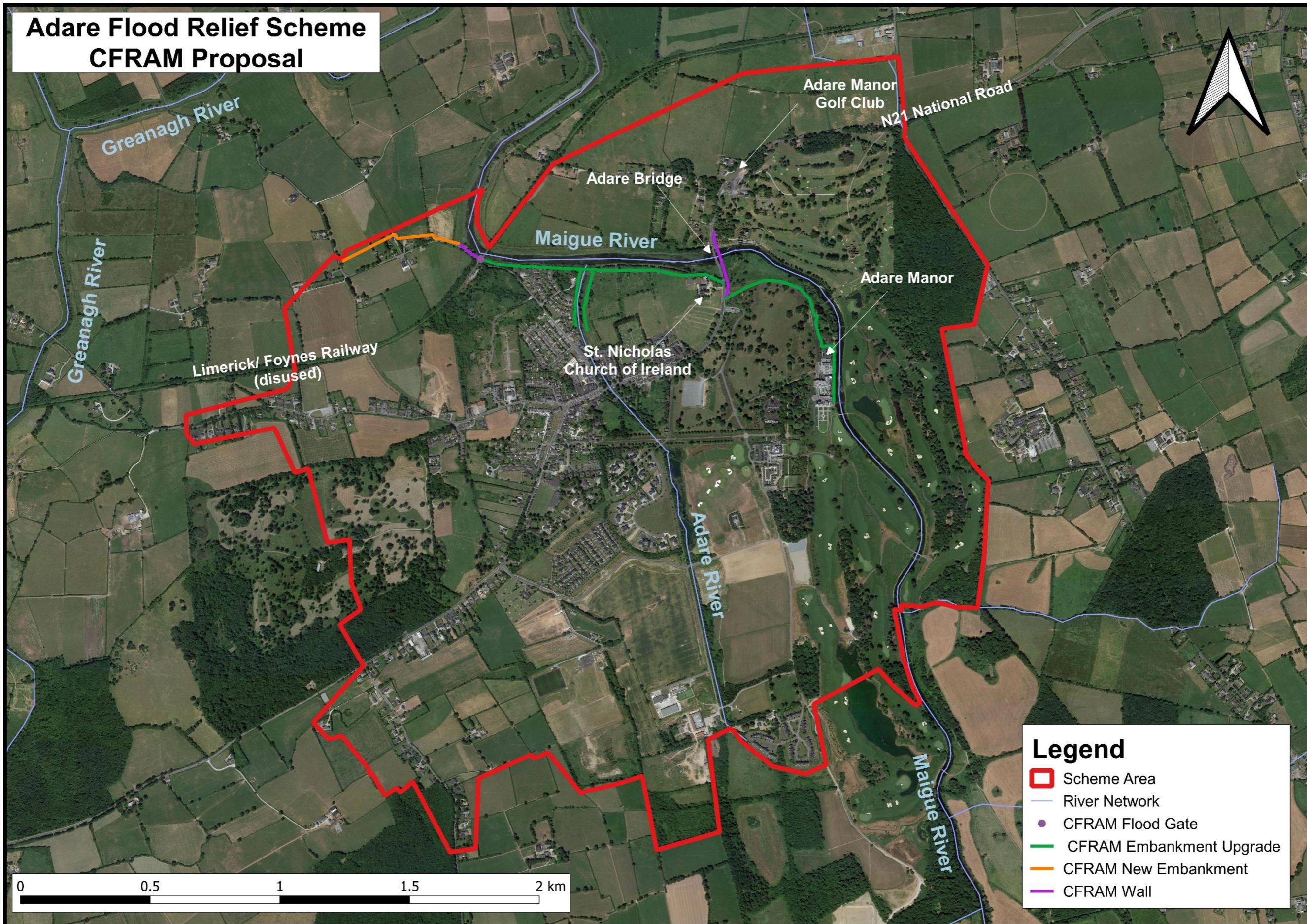
**LEGEND**

- River Network
- Scheme Area
- SAC
- SPA
- pNHA
- Architectural Conservation Area
- Protected Structures
- Recorded Archaeological Monuments
- Adare Historic Town Zone
- Zone of Archaeological Notification





# Adare Flood Relief Scheme CFRAM Proposal

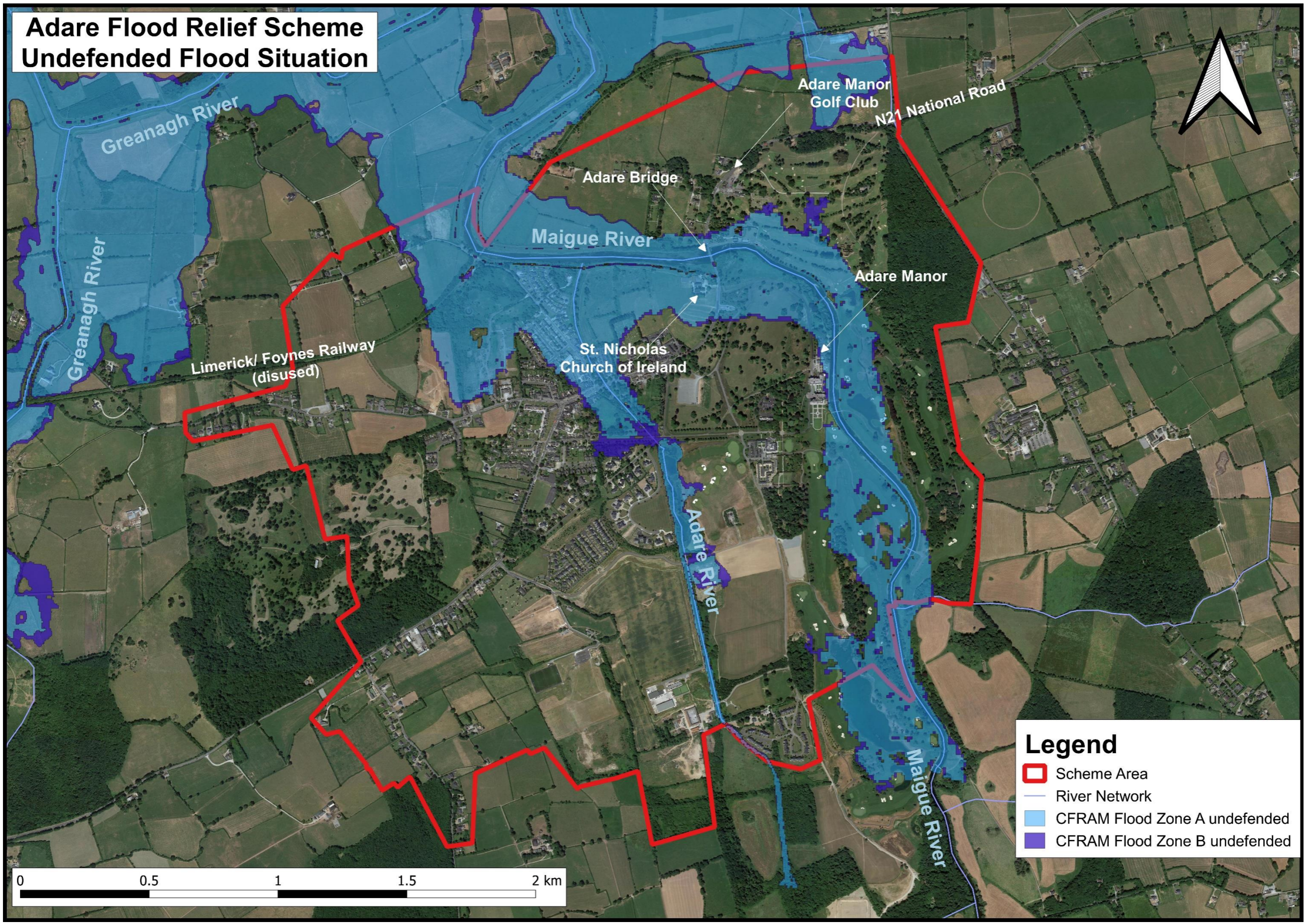


**Legend**

- Scheme Area
- River Network
- CFRAM Flood Gate
- CFRAM Embankment Upgrade
- CFRAM New Embankment
- CFRAM Wall



# Adare Flood Relief Scheme Undefended Flood Situation



**Legend**

- Scheme Area
- River Network
- CFRAM Flood Zone A undefended
- CFRAM Flood Zone B undefended