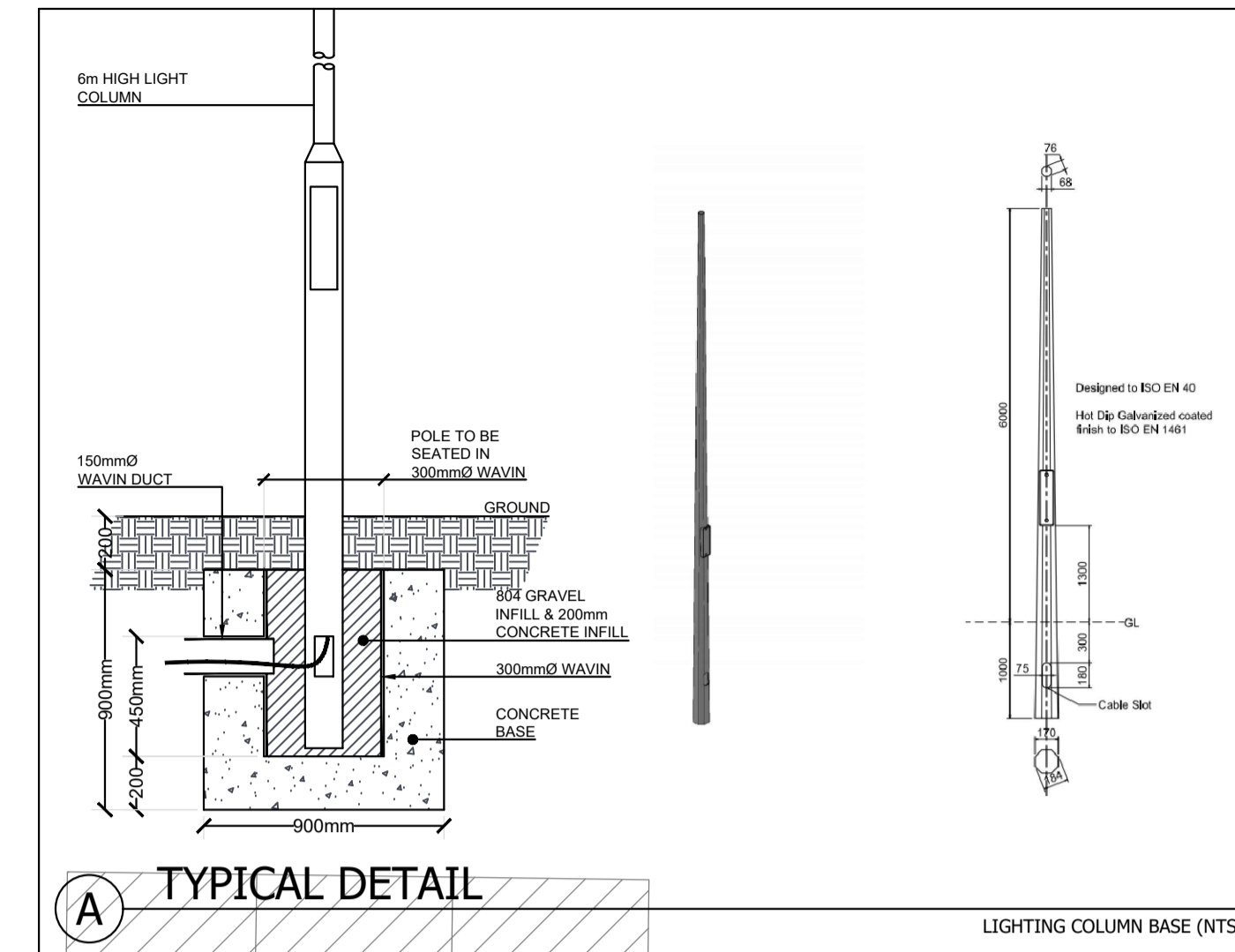
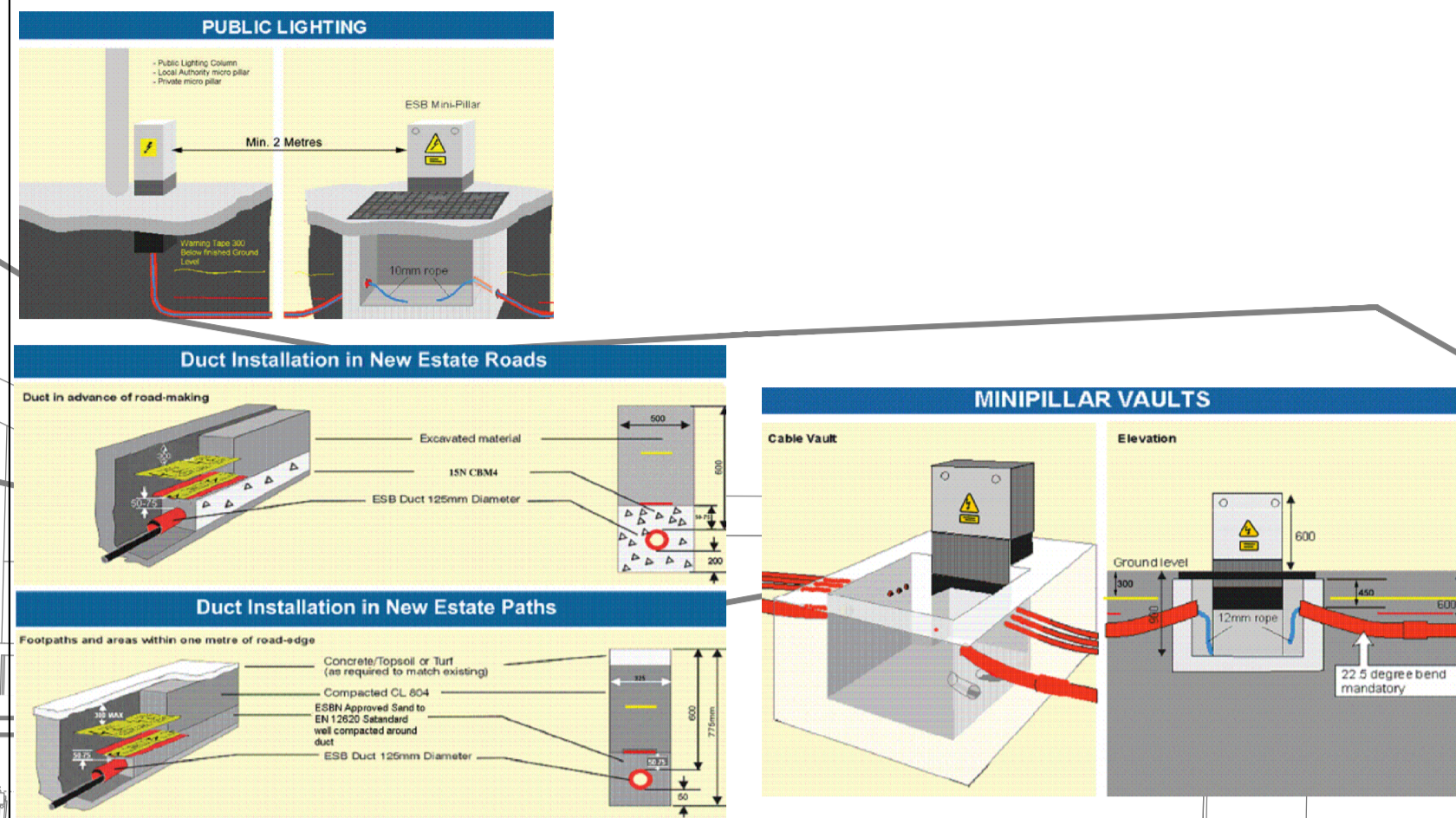


TYPE A			
MANUFACTURER	MICRO PLUS	MPG-1A	
INSTALLATION TYPE	POLE MOUNTED	DIMENSIONS	595X273X155
CONSTRUCTION	DIE CAST ALUMINIUM	BALLAST TYPE	LED
CLOUR / RAL NO.	TBD	DIMMING	NO
REFLECTOR / LOUVRE	THERMOPLASTIC	EMERGENCY	NO
LAMP SOURCE	30W	LIGHT DISTRIBUTION	SYMMETRICAL
NO. OF LAMPS	1	INGRESS PROTECTION	IP66

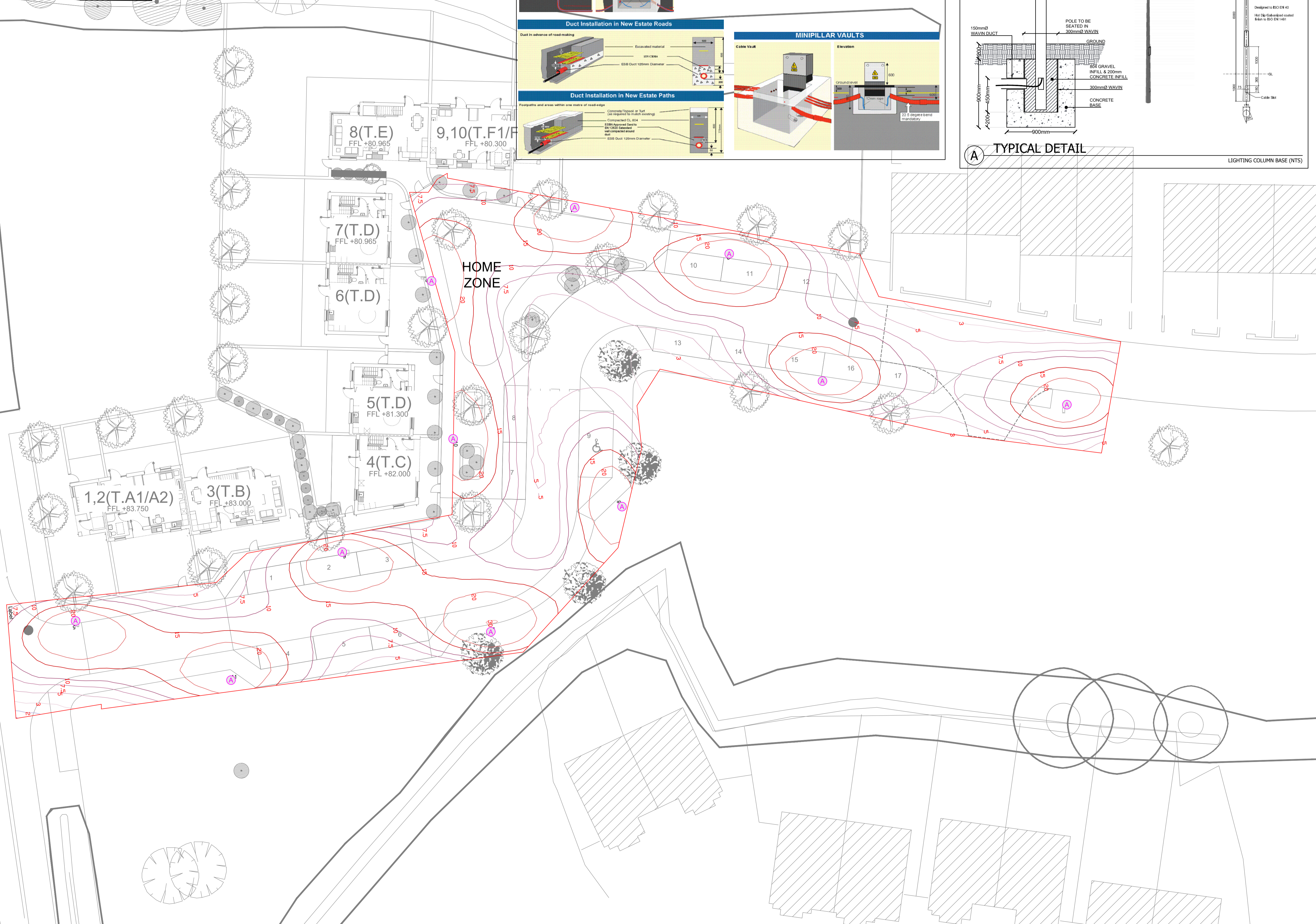
ESB DETAILS



Copyright ©
No part of this document may be re-produced or transmitted in any form or stored in any retrieval system of any nature without the written permission of the consultant as copyright holder excepts as agreed for use on the project for which the document was originally written.

- General notes:**
- This drawing to be read in conjunction with all relevant architectural drawings and specifications.
 - This drawing to be read in conjunction with all relevant mechanical and electrical drawings and specifications.
 - This drawing to be read in conjunction with all relevant mechanical and electrical drawings and specifications.
 - All dimensions in millimeters. Do not scale from this drawing. Only use figured dimensions only.
 - Contractor must verify all dimensions on site prior to installation of services and production of working drawings.
- Notes:**
- The electrical installation shall be in accordance with IS10101
 - All wiring to street lighting to be 6.0mm² in ducting
 - The contractor shall ensure that the earthing system complies with ETGI regulations for flood lighting systems
 - All mini pillar vaults by main contractor
 - Mini pillar vaults installation shall be in full accordance with ESB guidelines
 - Drawchambers removed as per client request.
 - Refer to detail A for typical lighting column detail

NOTE
SEE LIGHTING CALCULATION DOCUMENT FOR SCHEDULES & CALCULATION RESULTS



P2	PART 8 - PLANNING	26/04/2022
P1	STAGE 2 ISSUE	10/08/21
Rev	Description	Date

MOLONEYFOX
CONSULTING ENGINEERS
46 O'Connell Street, Limerick, T1 0117/7841
E: info@moloneyfoxconsulting.ie | www.moloneyfoxconsulting.ie

Client: LIMERICK CITY & CO. COUNCIL
DESIGN & DELIVERY SERVICES
MERCHANTS QUAY
LIMERICK

Architect: LIMERICK CITY & CO. COUNCIL
DESIGN & DELIVERY SERVICES
MERCHANTS QUAY
LIMERICK

Project: O'CONNOR PARK, ARDAGH
COUNTY, LIMERICK

Drawing: ELECTRICAL INSTALLATION
STAGE 2 - SITE LAYOUT
EIR SERVICES

Proj Ref | 21.2148 | Drg Ref | ES.02 | Scale | 1:200 A1
Drawn | GJA | Checked | JM | Approved | MF

Drawing Status:
Preliminary For Approval Tender Issue
For Information For Comment Contract Issue