

**PROPOSED FOUL DRAINAGE LAYOUT PLAN**  
SCALE 1:250 @ A1 & 1:500 @ A3

**FOUL WATER DRAINAGE NOTES:-**

ALL PIPE RUNS BETWEEN FOUL ACCESS JUNCTIONS TO BE 110mm Ø UPVC AT 1 IN 40 GRADIENT WITH 100mm 15/20 CONCRETE SURROUND

ALL PIPE DIAMETERS ARE NOMINAL.

PRIVATE DRAINAGE RUNS:  
(A) ALL SEWER PIPES 3750 TO BE CLASS 'H' SPIGOT SOCKET CONCRETE PIPES TO I.S. 6 UNLESS OTHERWISE NOTED.  
(B) ALL SEWER PIPES > 2250 TO BE CLASS 'M' SPIGOT & SOCKET CONCRETE PIPES, UNLESS OTHERWISE NOTED.  
(C) ALL SEWER PIPES < 1500 TO BE UPVC TO IS 424.

THE CONTRACTOR MUST CONTACT THE RELEVANT AUTHORITIES PRIOR TO CONSTRUCTION WORK & SATISFY HIMSELF IN RESPECT OF THE LOCATION OF ALL EXISTING SERVICES.

600mm MAX. LENGTH ROCKER PIPES ARE TO BE PROVIDED ON SEWERS WHERE:  
(A) A PIPE ENTERS A MANHOLE OR PUMPING STATION.  
(B) A PIPE LEAVES A MANHOLE.  
(C) A PIPE ENTERS CONCRETE ENCASUREMENT.  
(D) A PIPE LEAVES CONCRETE ENCASUREMENT.  
(E) AN OTHER LOCATION AS DIRECTED BY THE ENGINEER.

ALL SEWER ROCKER PIPES ARE TO BE FORMED BY CUTTING AND TRIMMING A LENGTH OF SPIGOT & SOCKET PIPE TO FORM A SPIGOT AT THE CUT END, THEREBY FORMING SPIGOT & SOCKET JOINTS AT BOTH ENDS OF THE ROCKER PIPE.

WHERE SEWER PIPES AND RISING MAINS CONNECT TO EXISTING MANHOLES, THE CONTRACTOR IS REQUIRED TO:  
(A) CONTACT THE RELEVANT AUTHORITIES PRIOR TO COMMENCING WORK.  
(B) MAKE GOOD THE EXISTING CHAMBER WALL AT THE PROPOSED POINT AND ADJUST THE EXISTING BENCHING TO THE SATISFACTION OF THE ENGINEER.

WHERE SEWER PIPES, RISING MAINS & ROAD GULLY DRAINS CROSS EXISTING ROADS, THE CONTRACTOR IS REQUIRED TO:  
(A) CONTACT THE RELEVANT AUTHORITIES PRIOR TO COMMENCING WORK.  
(B) MAKE GOOD THE EXISTING ROAD TO THE SATISFACTION OF THE ENGINEER.

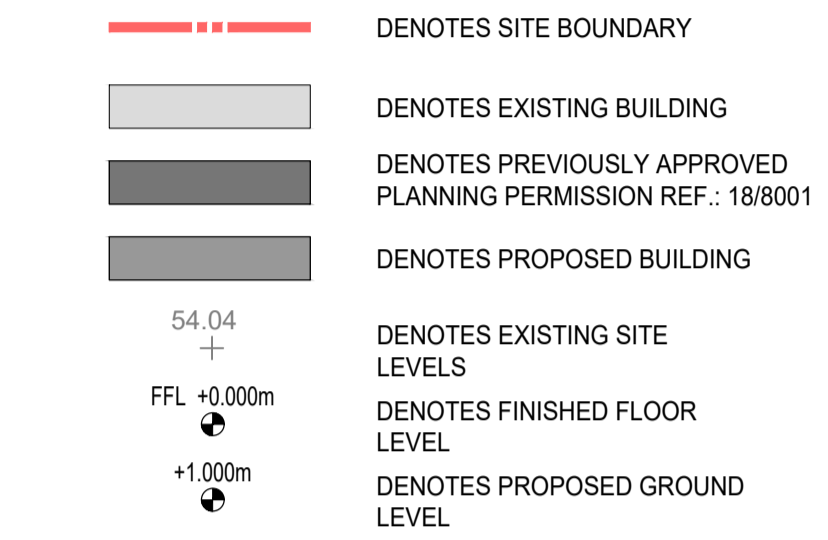
ALL ROCKER PIPES SHALL BE NO MORE THAN 150mm FROM THEIR ASSOCIATED MANHOLE, PUMPING STATION, CONCRETE ENCASED SECTION OR VALVE CHAMBER.

LOCKABLE COVERS TO BE PROVIDED TO ALL PRIVATE MANHOLES GREATER THAN 1.8m DEEP.

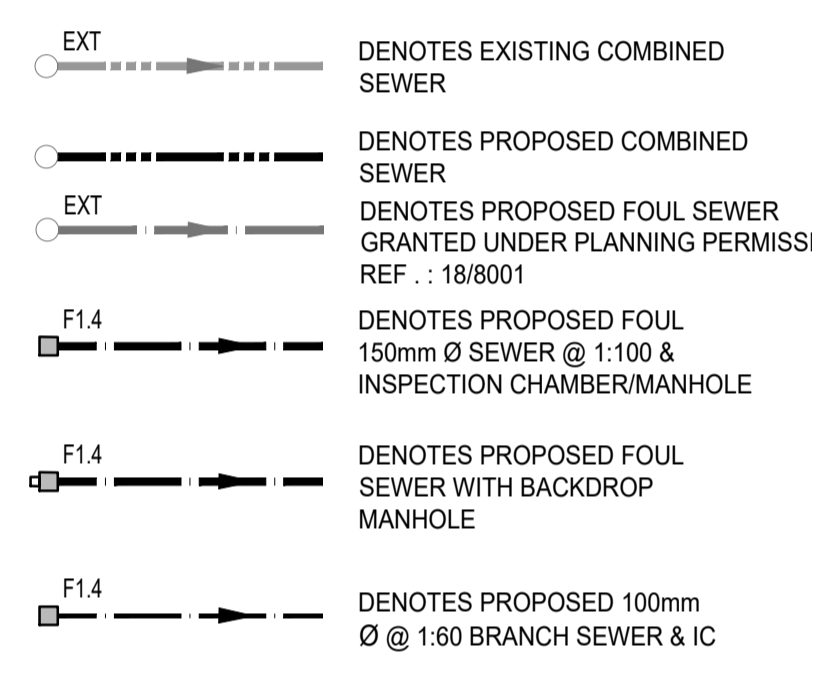
**GENERAL NOTES:-**

- THIS DRAWING TO BE READ IN CONJUNCTION WITH ALL RELEVANT ARCHITECTS & ENGINEERS DRAWINGS & SPECIFICATIONS.
- DO NOT SCALE. USE FIGURED DIMENSIONS ONLY.
- THE CONTRACTOR SHALL VERIFY ALL DIMENSIONS & ARCHITECTURAL DRAWINGS PRIOR TO START OF CONSTRUCTION. ALL DISCREPANCIES TO BE NOTIFIED, IN WRITING TO ENGINEERS & ARCHITECTS FOR RESOLUTION.
- ALL DIMENSIONS ON DRAWINGS ARE IN MILLIMETRES UNLESS OTHERWISE NOTED.
- FOR DETAILS AND SETTING OUT OF RWP, SVP, WVP & ALL OPENINGS SEE THE RELEVANT ARCHITECTS DRAWINGS.
- FOR RADON BARRIER, D.P.C. & INSULATION DETAILS REFER TO ARCHITECTS DRAWINGS

**GENERAL LEGEND:-**



**FOUL LEGEND:-**



ALL SETTING OUT DIMENSIONS TO BE CHECKED AGAINST ARCHITECTS DRAWINGS. ARCHITECTS DRAWINGS TO TAKE PRECEDENCE.

**Issue Register**

No.	Date	Revision	Drawn	Checked	Approved

**TENDER**

Client: LIMERICK CITY & COUNTY COUNCIL

Project: PROPOSED RESIDENTIAL DEVELOPMENT AT BLACKBOY RD / GREENHILL RD

Drawing Title: PROPOSED FOUL DRAINAGE LAYOUT PLAN

Project No: 171027 Scale: A1-1:250

Drawing No: 171027/C/003.1 Rev: PL1

Drawn: MT Checked: DCH Date: 15/08/19

Martin Peters Associates Consulting Engineers  
Omondra Road Kilkenny  
T: +353 56 7702761 F: +353 56 7702728 E: info@mpa.ie