

SURFACE WATER DRAINAGE NOTES:-

ALL ROAD GULLY / ACCESS JUNCTION PIPE RUNS TO BE 150mm Ø UPVC @ 1:50 GRADIENT UNLESS NOTED OTHERWISE.
 ALL RWP'S TO CONNECT TO MAINS SEWER WITH 100mm Ø UPVC PIPE @ 1:80, USING LONG RADIUS BEND TO CROWN OF PIPE.
 ALL ROAD GULLY & RWP DRAINS ARE TO HAVE 100mm CLASS 15/20 CONCRETE SURROUND.

PUBLIC SEWERS AND MANHOLES SHOULD COMPLY WITH REQUIREMENTS OF THE GREATER DUBLIN STRATEGIC DRAINAGE STUDY AND THE LOCAL AUTHORITY CODE OF PRACTICE FOR DRAINAGE WORKS AND STANDARD DETAILS.

ALL ROAD GULLIES TO BE TRAPPED AND COMPLY WITH NRA SPECIFICATION FOR ROAD WORKS.

PRIVATE DRAINAGE RUNS:
 (A) ALL DRAINAGE PIPES 375Ø TO BE CLASS 'H' SPIGOT & SOCKET CONCRETE PIPES TO I.S. 6 UNLESS OTHERWISE NOTED.
 (B) ALL DRAINAGE PIPES > 225Ø TO BE CLASS 'M' SPIGOT & SOCKET CONCRETE PIPES, UNLESS OTHERWISE NOTED.
 (C) ALL DRAINAGE PIPES < 150Ø TO BE UPVC TO IS 424.

THE CONTRACTOR MUST CONTACT THE RELEVANT AUTHORITIES PRIOR TO CONSTRUCTION WORK & SATISFY HIMSELF IN RESPECT OF THE LOCATION OF ALL EXISTING SERVICES.

600mm MAX. LENGTH ROCKER PIPES ARE TO BE PROVIDED ON SEWERS WHERE:
 (A) A PIPE ENTERS A MANHOLE OR PUMPING STATION.
 (B) A PIPE LEAVES A MANHOLE.
 (C) A PIPE ENTERS CONCRETE ENCASEMENT.
 (D) A PIPE LEAVES CONCRETE ENCASEMENT.
 (E) AN OTHER LOCATION AS DIRECTED BY THE ENGINEER.

ALL ROCKER PIPES ARE TO BE FORMED BY CUTTING AND TRIMMING A LENGTH OF SPIGOT & SOCKET PIPE TO FORM A SPIGOT AT THE CUT END, THEREBY FORMING SPIGOT & SOCKET JOINTS AT BOTH ENDS OF THE ROCKER PIPE.

WHERE STORMWATER PIPES, RISING MAINS & ROAD GULLY DRAINS CROSS EXISTING ROADS, THE CONTRACTOR IS REQUIRED TO:
 (A) CONTACT THE RELEVANT AUTHORITIES PRIOR TO COMMENCING WORK.
 (B) MAKE GOOD THE EXISTING ROAD TO THE SATISFACTION OF THE ENGINEER.

ALL ROCKER PIPES SHALL BE NO MORE THAN 150mm FROM THEIR ASSOCIATED MANHOLE, PUMPING STATION, CONCRETE ENCASED SECTION OR VALVE CHAMBER.

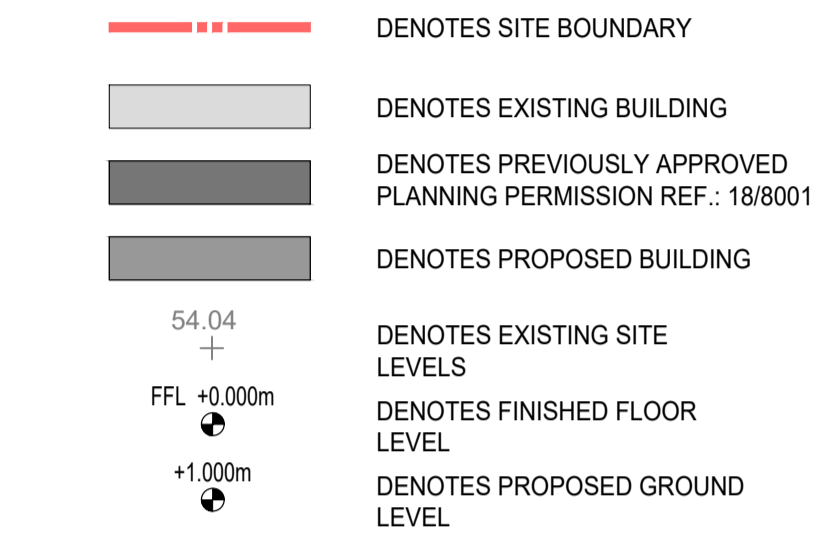
LOCKABLE COVERS TO BE PROVIDED TO ALL PRIVATE MANHOLES GREATER THAN 1.8m DEEP.

ON COMPLETION ALL SEWERS ARE TO BE PRESSURE TESTED / CCTV SURVEYED AS PER SPECIFICATION.

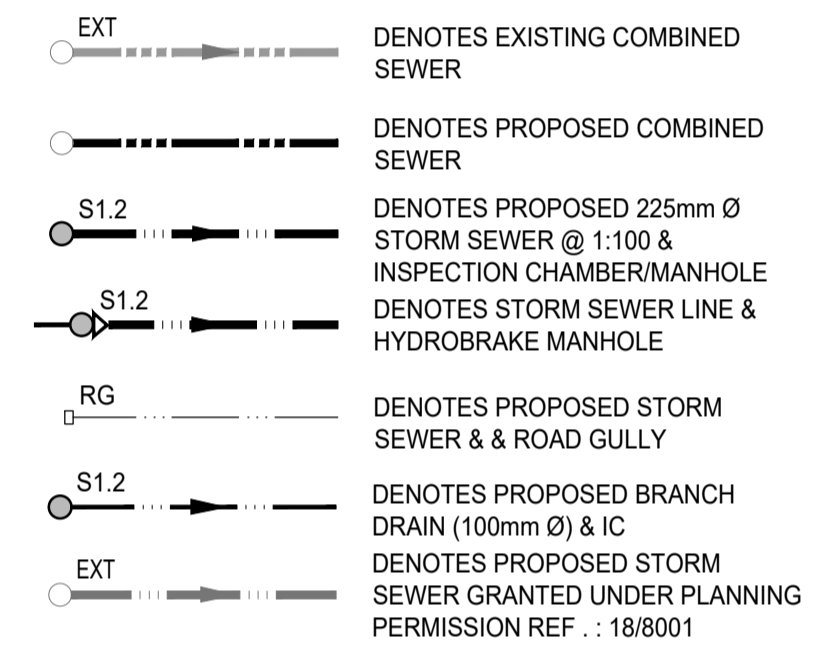
GENERAL NOTES:-

- THIS DRAWING TO BE READ IN CONJUNCTION WITH ALL RELEVANT ARCHITECTS & ENGINEERS DRAWINGS & SPECIFICATIONS.
- DO NOT SCALE. USE FIGURED DIMENSIONS ONLY.
- THE CONTRACTOR SHALL VERIFY ALL DIMENSIONS & ELEVATIONS WITH ARCHITECTURAL DRAWINGS PRIOR TO START OF CONSTRUCTION. ALL DISCREPANCIES TO BE NOTIFIED, IN WRITING TO ENGINEERS & ARCHITECTS FOR RESOLUTION.
- ALL DIMENSIONS ON DRAWINGS ARE IN MILLIMETRES UNLESS OTHERWISE NOTED.
- FOR DETAILS AND SETTING OUT OF RWP, SVP, WVP & ALL OPENINGS SEE THE RELEVANT ARCHITECTS DRAWINGS.
- FOR RADON BARRIER, D.P.C. & INSULATION DETAILS REFER TO ARCHITECTS DRAWINGS

GENERAL LEGEND:-



STORM LEGEND:-



ALL SETTING OUT DIMENSIONS TO BE CHECKED AGAINST ARCHITECTS DRAWINGS. ARCHITECTS DRAWINGS TO TAKE PRECEDENCE.

Issue Register

No.	Date	Revision	Drawn	Checked	Approved
PL1	09/09/19	PLANNING ISSUE	MT	DCH	MJP

TENDER

Client: LIMERICK CITY & COUNTY COUNCIL

Project: PROPOSED RESIDENTIAL DEVELOPMENT AT BLACKBOY RD / GREENHILL RD

Drawing Title: **PROPOSED STORM DRAINAGE LAYOUT PLAN**

Project No: 171027 Scale: A1-1:250

Drawing No: 171027/C/004.1 Rev: **PL1**

Drawn: MT Checked: DCH Date: 15/08/19

Martin Peters Associates Consulting Engineers
 Omarras Road Kilkenny
 T: +353 56 7702761 F: +353 56 7702728 E: info@mpa.ie

PROPOSED STORM DRAINAGE LAYOUT PLAN
 SCALE 1:250 @ A1 & 1:500 @ A3