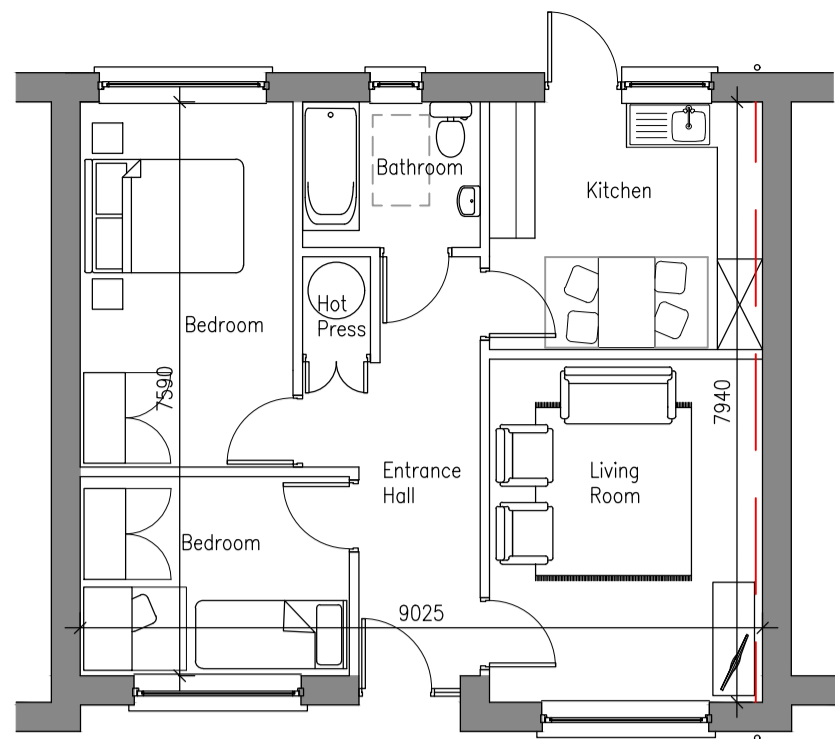


### House Type A



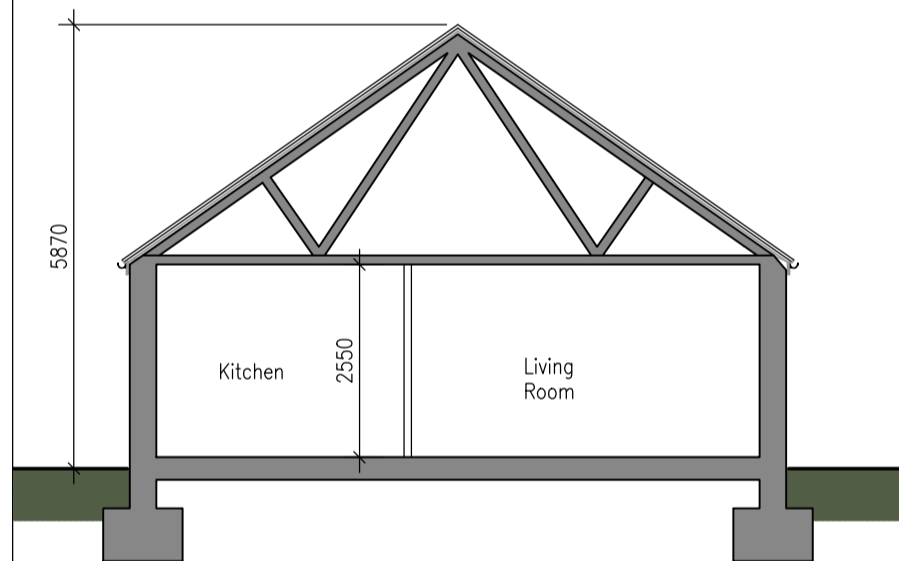
Type A, Typical Ground Floor Plan Scale 1:100



Type A, Typical Front Elevation Scale 1:100



Type A, Typical Rear Elevation Scale 1:100



Type A, Typical Section Scale 1:100

**Outline Specification**  
The following should be read for general information only. Refer to Architects Specification for further information and detail.

**External Cavity Wall Construction Generally**  
Externally render (smooth & rough) on;  
100mm concrete block outer leaf with;  
150mm cavity fully filled with bonded blown, graphite enhanced, EPS bead cavity wall insulation above dpc, with;  
150mm cavity fully filled with XPS insulation below DPC and above DPM/radon barrier, with;  
Concrete fill to cavity below the DPM/radon barrier, with;  
100mm concrete block inner leaf with;  
15mm wet plaster & skim with;  
Paint or tiling internal finish where indicated on drawings.

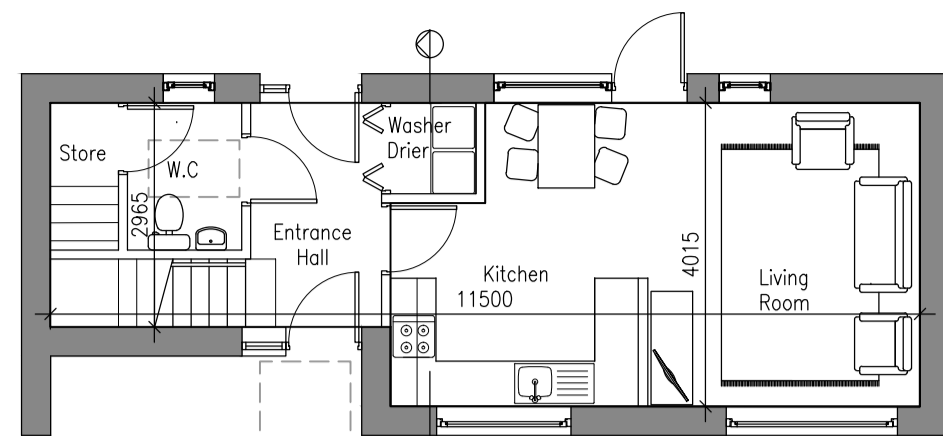
**Cavity wall to incorporate:**  
Thermally efficient wall ties (eg Teplote Ties)  
Thermally efficient blocks (see Architectural sections and details for locations) at all potential areas where cold bridge problems might occur eg sill, floor perimeter, etc.  
Joist hangers for first floor timber joists.  
Separate pre-stressed concrete lintels to each blockwork leaf.  
Proprietary insulated fire rated cavity closers to perimeter of all windows, doors, and at eaves level.  
Proprietary sleeved firestops between compartments.

**Internal walls**  
**Party walls**  
To be cavity wall insulation:  
100mm block to both leaves with;  
150mm cavity fully filled with bonded blown, graphite enhanced, EPS bead cavity wall insulation with;  
15mm wet plaster & skim internal finish with;  
Paint or tiling finish where indicated on drawings.  
Party cavity wall to incorporate thermally efficient wall ties (eg Teplote Ties)  
Proprietary sleeved firestops at party wall and external wall junctions

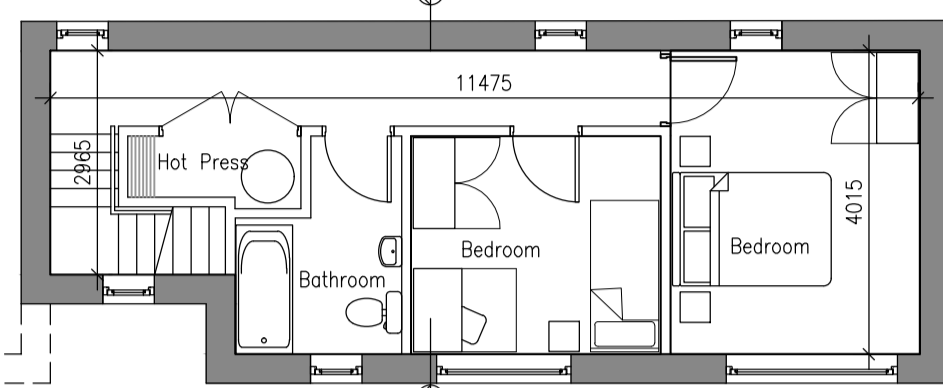
**Roof Construction (unventilated attic)**  
Dark grey/black fibre cement slates on;  
25x38 treated sw counter battens, with over-fascia vent incorporated at eaves, on;  
25x50 treated sw battens on;  
High performance breathable membrane (eg 'Solitex Plus') laid tight over rafters.  
Roof Trusses to Engineers drawings and specification.

**Roof Insulation above ceiling generally:**  
300mm quilted insulation laid in cross layers between and over joists.  
At eaves level fully fill around wall plate and top of cavity barrier with wood fibre insulation board cut to suit.

### House Type B



Type B, Typical Ground Floor Plan Scale 1:100



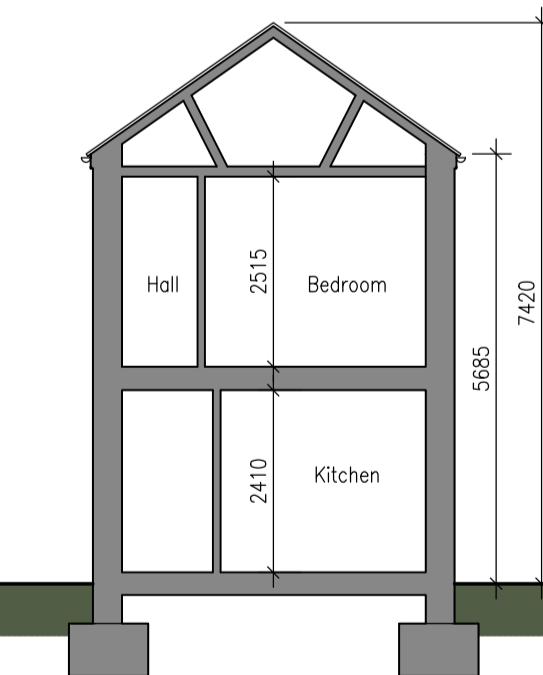
Type B, Typical First Floor Plan Scale 1:100



Type B, Typical Front Elevation Scale 1:100

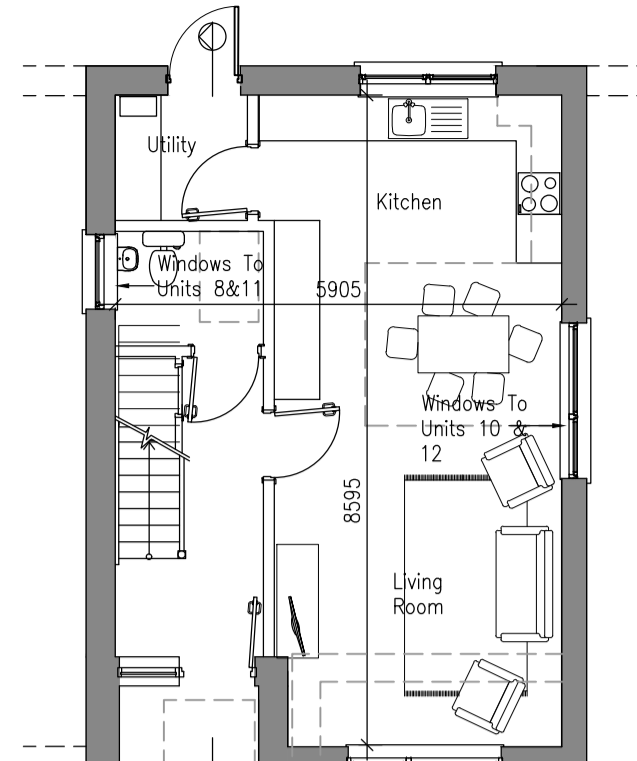


Type B, Typical Rear Elevation Scale 1:100

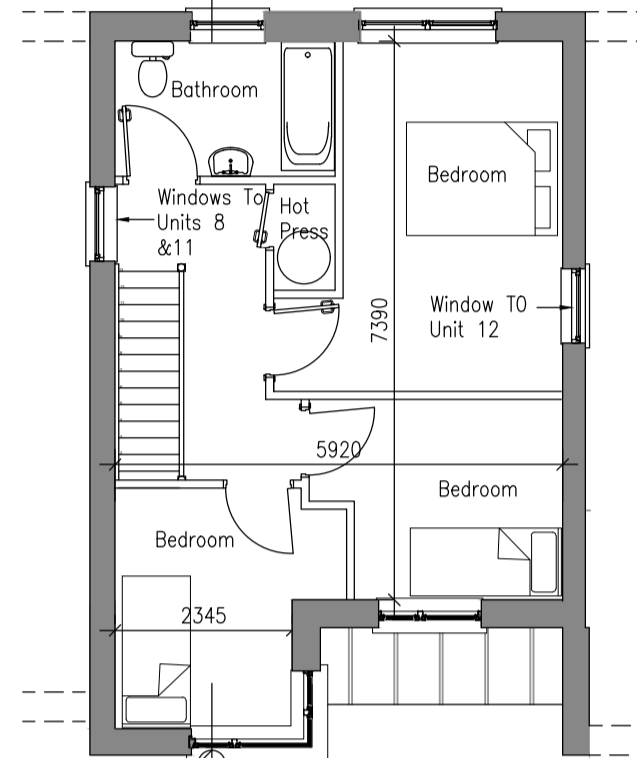


Type B, Typical Section Scale 1:100

### House Type D



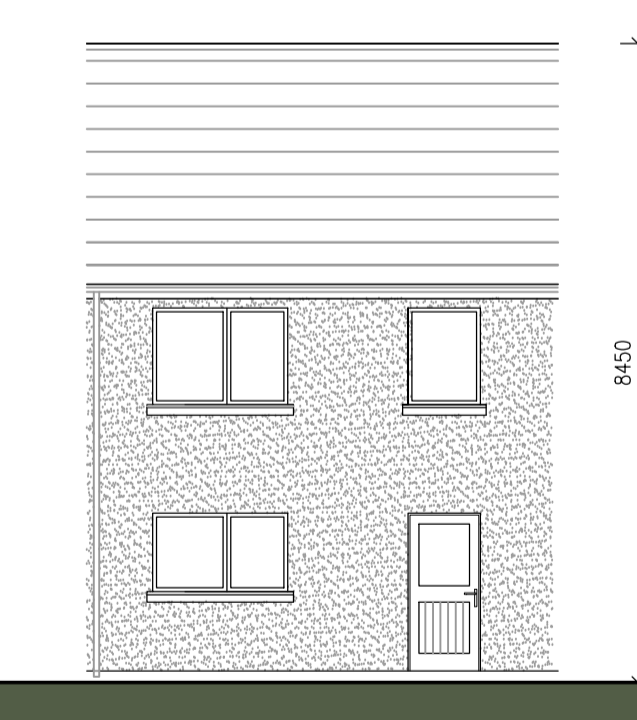
Type D, Typical Ground Floor Plan Scale 1:100



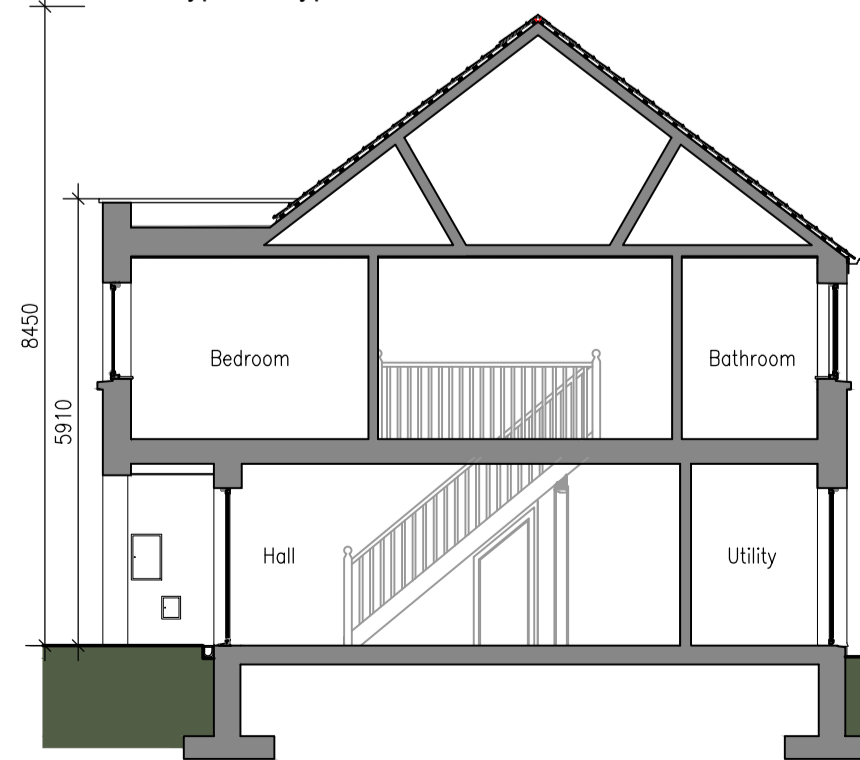
Type D, Typical First Floor Plan Scale 1:100



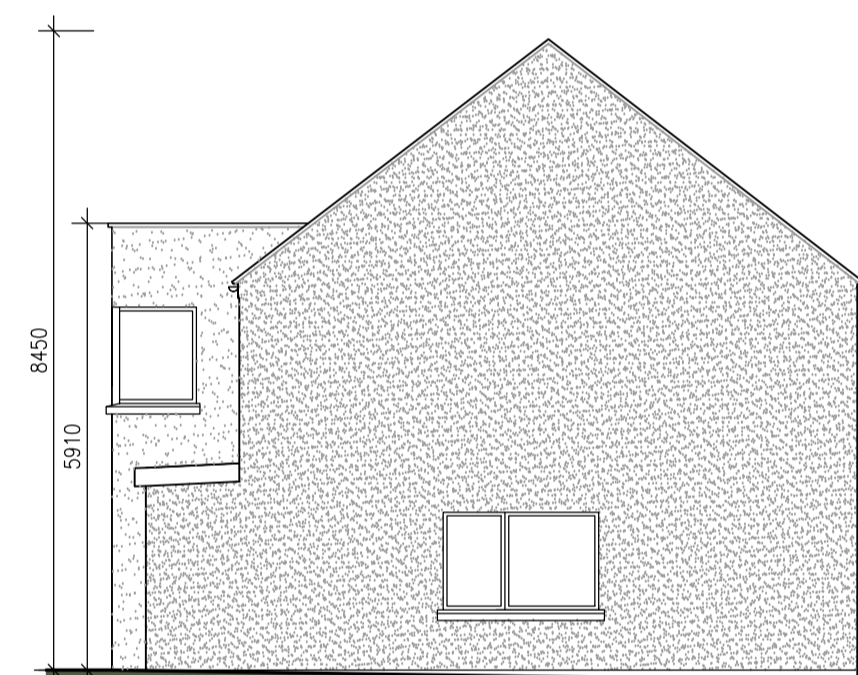
Type D, Typical Front Elevation Scale 1:100



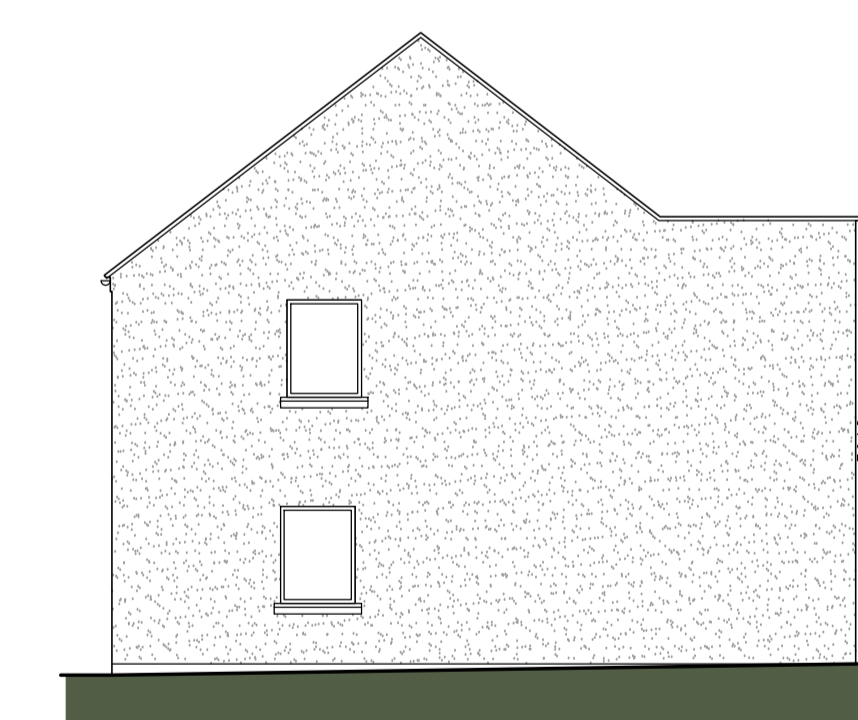
Type D, Typical Rear Elevation Scale 1:100



Type D, Typical Section Scale 1:100



Type D, Unit 10 Gable Scale 1:100

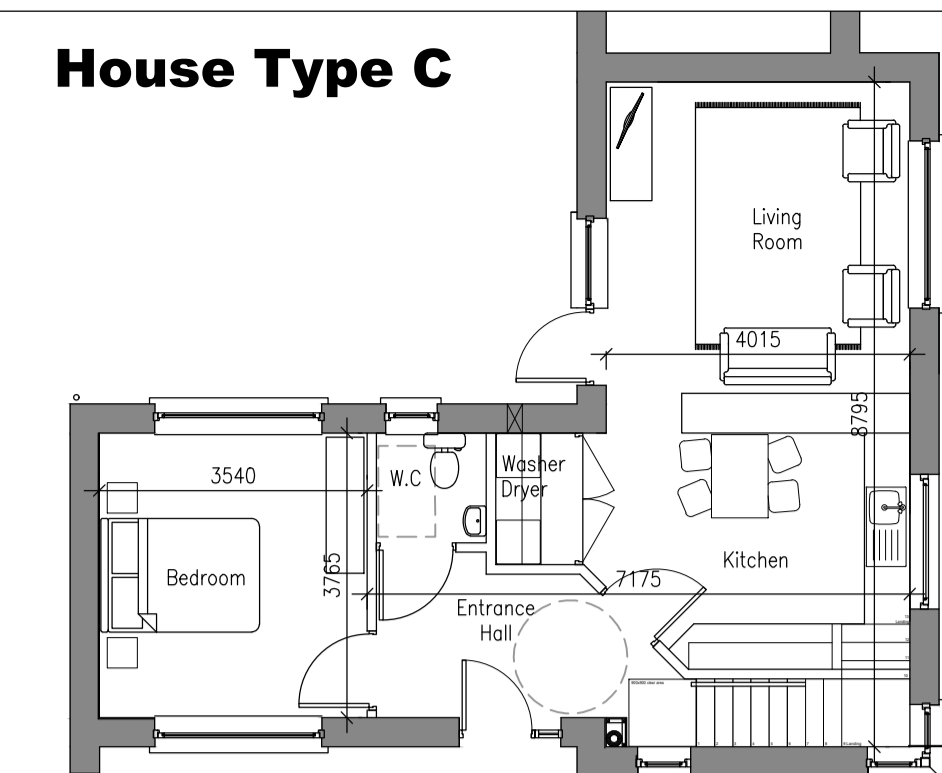


Type D, Units 8 & 11 Gable Scale 1:100

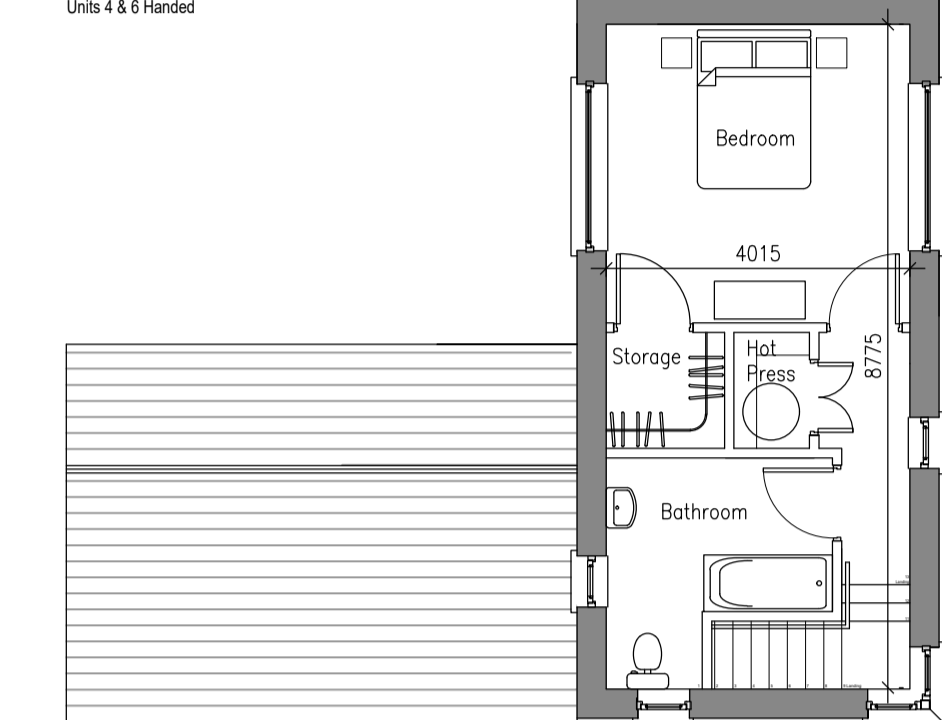


Type D, Unit 12 Gable Scale 1:100

### House Type C



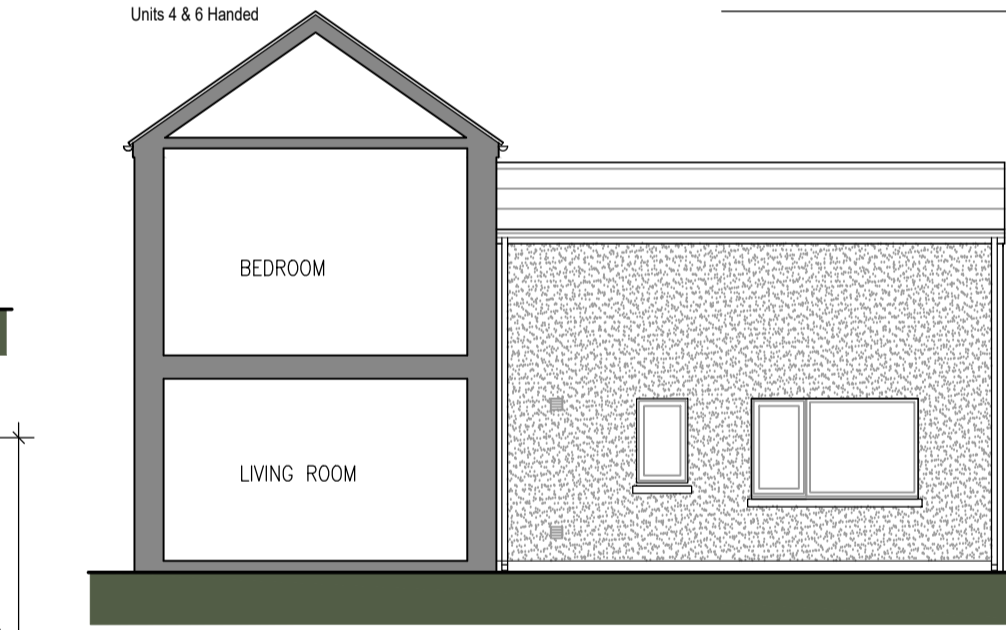
Type C, Typical Ground Floor Plan Scale 1:100



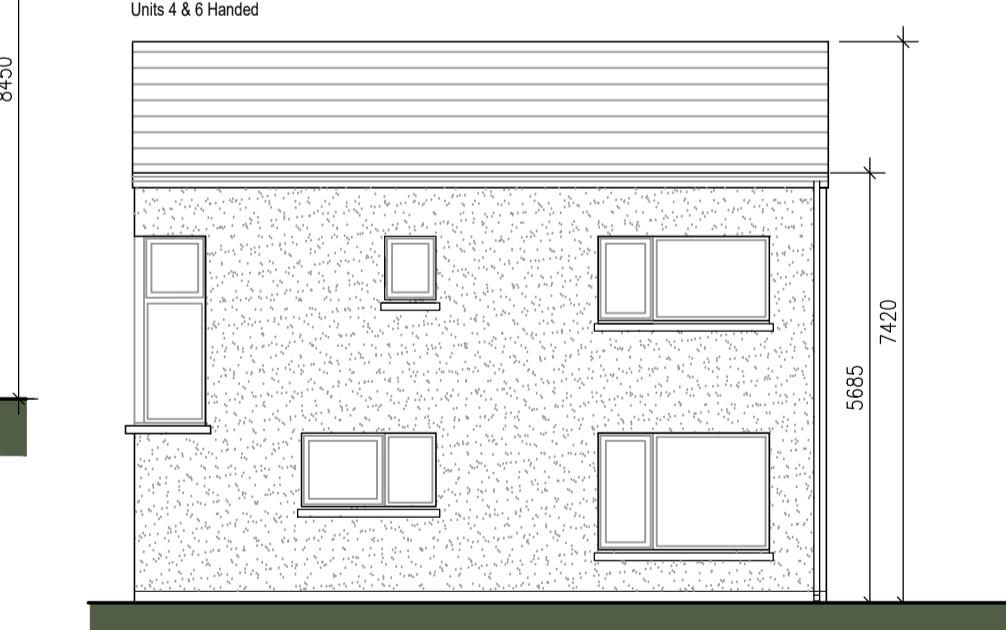
Type C, Typical First Floor Plan Scale 1:100



Type C, Typical Front Elevation Scale 1:100



Type C, Typical Front Elevation Scale 1:100



Type C, Typical Rear Elevation Scale 1:100



Type C, Typical Rear Elevation Scale 1:100

**COPYRIGHT:**  
The design and details shown on this drawing are applicable to their project only and may not be reproduced in whole or in part or be used for any other project or purpose without the written permission of Limerick City and County Council with whom copyright resides.  
**DO NOT SCALE** from this drawing. Use figured dimensions. Contractor to check all dimensions on site prior to commencement of works. Any discrepancies are to be referred to the ARCHITECT.

#### REVISIONS

NO.	DATE	REV.	BY	CHECKED	DESCRIPTION

DATE REV. BY CHECKED DESCRIPTION

**Limerick City and County Council**  
Design & Delivery Services  
Merchants Quay  
Limerick

**PROJECT:**  
Housing Development at  
Montpelier Limerick

**STAGE:**  
Pre Planning

**DRAWING TITLE:**  
17101-004 House Types

DATE: 12/12/18

SCALE: 1:100

DRAWN: RD

CHECKED: -

JOB NO: 17101

FILE NAME: -

DRAWING NO:

17101-004

SHEET SIZE:

A1

REVISION:

P1