




COPYRIGHT:
 The design and details shown on this drawing are applicable to their project only and may not be reproduced in whole or in part or be used for any other project or purpose without the written permission of Limerick City and County Council with whom copyright resides.

DO NOT SCALE from this drawing. Use figured dimensions. Contractor to check all dimensions on site prior to commencement of works. Any discrepancies are to be referred to the ARCHITECT.

REVISIONS		
DATE	REV.	CH. DESCRIPTION


 Comhairle Cathrach
 & Contae Limerick
 Limerick City
 & County Council

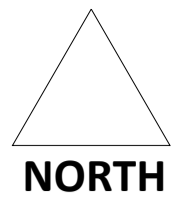
Transport & Mobility
 Merchants Quay
 Limerick

DATE: 2022-07-29
 SCALE: 1:2000
 DRAWN: MS
 CHECKED: MS
 JOB NO: LCC190003

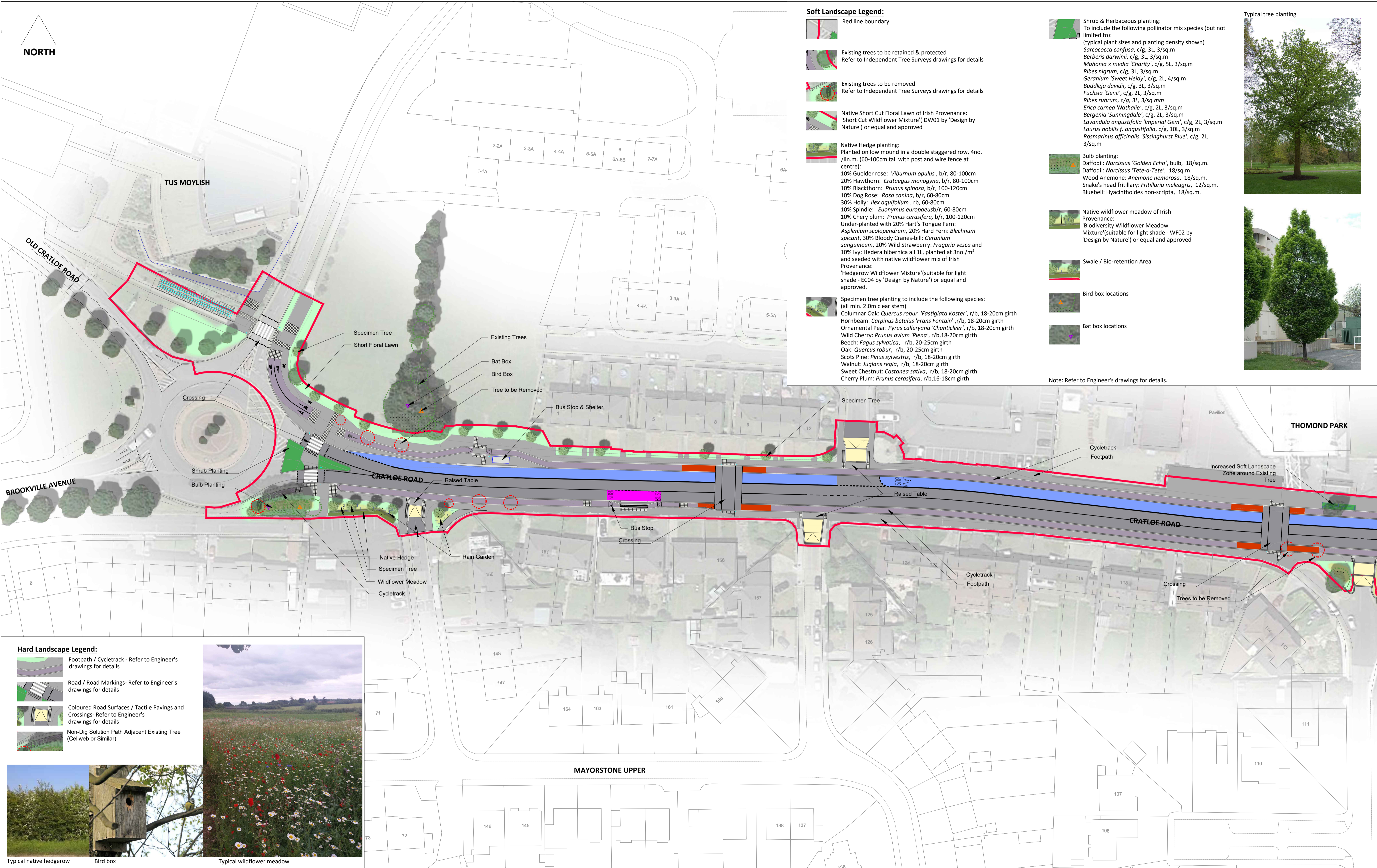
PROJECT:
 TUS Moylish to City
 Active Travel Scheme
STAGE:
 Part 8 Planning

DRAWING TITLE:
 Key Plan

DRAWING NO: LP01	SHEET SIZE: A1	REVISION: 00
----------------------------	--------------------------	------------------------



NORTH



Soft Landscape Legend:

- Red line boundary
- Existing trees to be retained & protected
Refer to Independent Tree Surveys drawings for details
- Existing trees to be removed
Refer to Independent Tree Surveys drawings for details
- Native Short Cut Floral Lawn of Irish Provenance: 'Short Cut Wildflower Mixture' (DW01 by 'Design by Nature') or equal and approved
- Native Hedge planting:
Planted on low mound in a double staggered row, 4no./lin.m. (60-100cm tall with post and wire fence at centre):
10% Guelder rose: *Viburnum opulus*, b/r, 80-100cm
20% Hawthorn: *Crataegus monogyna*, b/r, 80-100cm
10% Blackthorn: *Prunus spinosa*, b/r, 100-120cm
10% Dog Rose: *Rosa canina*, b/r, 60-80cm
30% Holly: *Ilex aquifolium*, rb, 60-80cm
10% Spindle: *Euonymus europaeus*/r, 60-80cm
10% Chery plum: *Prunus cerasifera*, b/r, 100-120cm
Under-planted with 20% Hart's Tongue Fern: *Asplenium scolopendrum*, 20% Hard Fern: *Blechnum spicant*, 30% Bloody Cranes-bill: *Geranium sanguineum*, 20% Wild Strawberry: *Fragaria vesca* and 10% Ivy: *Hedera hibernica* all 1L, planted at 3no./m² and seeded with native wildflower mix of Irish Provenance:
'Hedgerow Wildflower Mixture' (suitable for light shade - EC04 by 'Design by Nature') or equal and approved.
- Specimen tree planting to include the following species: (all min. 2.0m clear stem)
Columnar Oak: *Quercus robur* 'Fastigiata Koster', r/b, 18-20cm girth
Hornbeam: *Carpinus betulus* 'Frans Fontain', r/b, 18-20cm girth
Ornamental Pear: *Pyrus calleryana* 'Chanticleer', r/b, 18-20cm girth
Wild Cherry: *Prunus avium* 'Plena', r/b, 18-20cm girth
Beech: *Fagus sylvatica*, r/b, 20-25cm girth
Oak: *Quercus robur*, r/b, 20-25cm girth
Scots Pine: *Pinus sylvestris*, r/b, 18-20cm girth
Walnut: *Juglans regia*, r/b, 18-20cm girth
Sweet Chestnut: *Castanea sativa*, r/b, 18-20cm girth
Cherry Plum: *Prunus cerasifera*, r/b, 16-18cm girth

- Shrub & Herbaceous planting:**
To include the following pollinator mix species (but not limited to):
(typical plant sizes and planting density shown)
Sarcococca confusa, c/g, 3L, 3/sq.m
Berberis darwinii, c/g, 3L, 3/sq.m
Mahonia x media 'Charity', c/g, 5L, 3/sq.m
Ribes nigrum, c/g, 3L, 3/sq.m
Geranium 'Sweet Heidy', c/g, 2L, 4/sq.m
Buddleja davidii, c/g, 3L, 3/sq.m
Fuchsia 'Genii', c/g, 2L, 3/sq.m
Ribes rubrum, c/g, 3L, 3/sq.m
Erica carnea 'Nathalie', c/g, 2L, 3/sq.m
Bergenia 'Sunningdale', c/g, 2L, 3/sq.m
Lavandula angustifolia 'Imperial Gem', c/g, 2L, 3/sq.m
Laurus nobilis f. *angustifolia*, c/g, 10L, 3/sq.m
Rosmarinus officinalis 'Sissinghurst Blue', c/g, 2L, 3/sq.m
- Bulb planting:**
Daffodil: *Narcissus* 'Golden Echo', bulb, 18/sq.m.
Daffodil: *Narcissus* 'Tete-a-Tete', 18/sq.m.
Wood Anemone: *Anemone nemorosa*, 18/sq.m.
Snake's head fritillary: *Fritillaria meleagris*, 12/sq.m.
Bluebell: *Hyacinthoides non-scripta*, 18/sq.m.

- Native wildflower meadow of Irish Provenance:
'Biodiversity Wildflower Meadow Mixture' (suitable for light shade - WF02 by 'Design by Nature') or equal and approved
- Swale / Bio-retention Area
- Bird box locations
- Bat box locations

Note: Refer to Engineer's drawings for details.



- Hard Landscape Legend:**
- Footpath / Cycletrack - Refer to Engineer's drawings for details
 - Road / Road Markings- Refer to Engineer's drawings for details
 - Coloured Road Surfaces / Tactile Pavings and Crossings- Refer to Engineer's drawings for details
 - Non-Dig Solution Path Adjacent Existing Tree (Cellweb or Similar)



Typical native hedgerow Bird box Typical wildflower meadow

COPYRIGHT:
The design and details shown on this drawing are applicable to their project only and may not be reproduced in whole or in part or be used for any other project or purpose without the written permission of Limerick City and County Council with whom copyright resides.
DO NOT SCALE from this drawing. Use figured dimensions. Contractor to check all dimensions on site prior to commencement of works. Any discrepancies are to be referred to the ARCHITECT.

REVISIONS			
DATE	REV.	BY.	CH. DESCRIPTION

Comhairle Cathrach & Contae Limerick
Limerick City & County Council

Transport & Mobility
Merchants Quay
Limerick

DATE: 2022-07-29
SCALE: 1:500
DRAWN: MS
CHECKED: MS
JOB NO: LCC190003

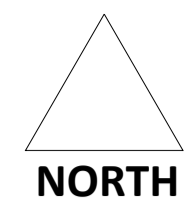
PROJECT:
TUS Moylish to City
Active Travel Scheme
STAGE:
Part 8 Planning

DRAWING TITLE:
Landscape Plan 1/4

DRAWING NO:
LP01

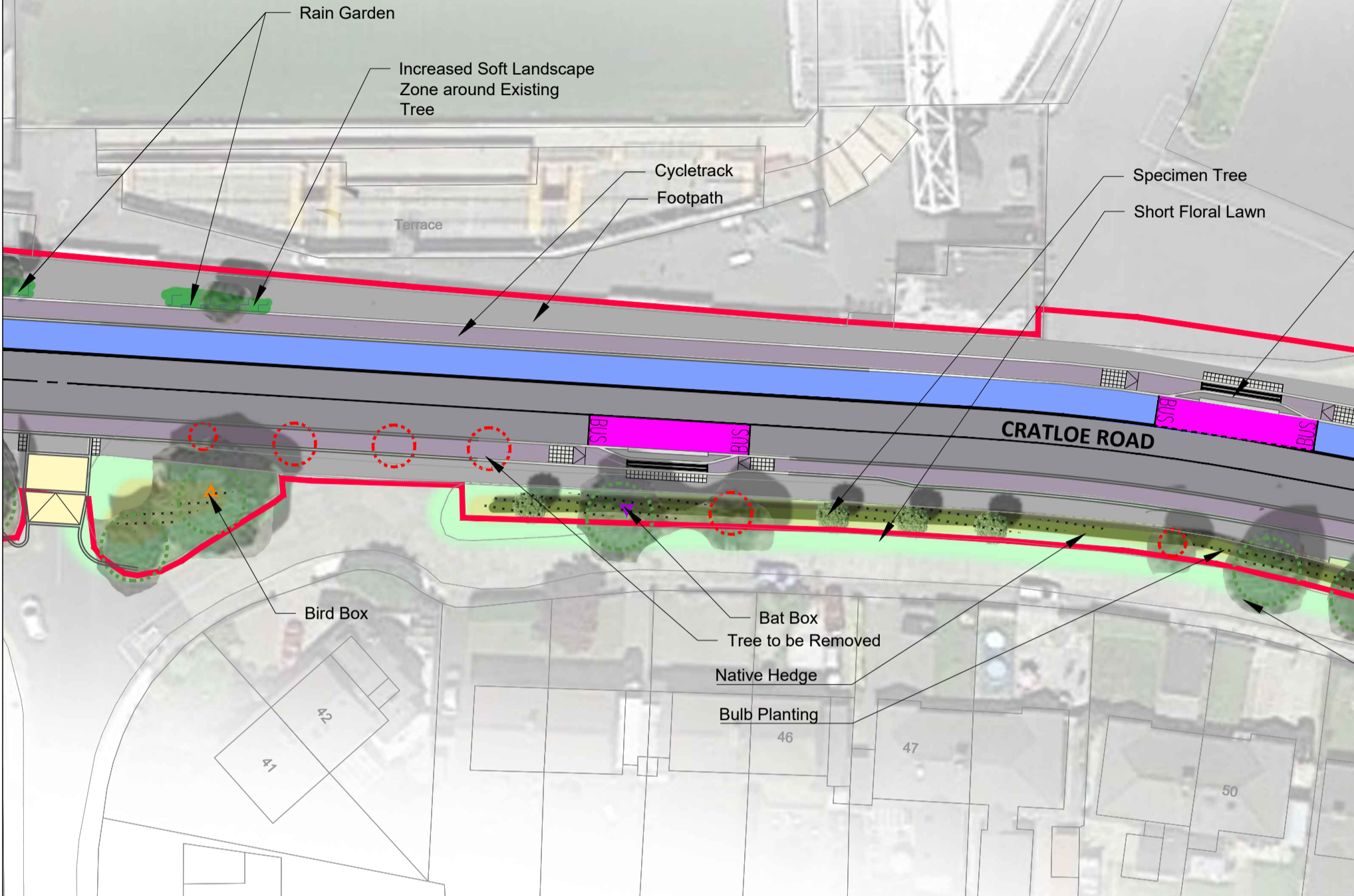
SHEET SIZE:
A1

REVISION:
00



Thomond Park Stadium

THOMOND PARK



- Mown Path
- Low Wall to be Replaced with Native Hedge
- Native Hedge
- Specimen Tree
- Wildflower Meadow
- Cycletrack
- Short Floral Lawn

Hard Landscape Legend:

- Footpath / Cycletrack - Refer to Engineer's drawings for details
- Road / Road Markings- Refer to Engineer's drawings for details
- Coloured Road Surfaces / Tactile Pavings and Crossings- Refer to Engineer's drawings for details
- Non-Dig Solution Path Adjacent Existing Tree (Cellweb or Similar)

Note: Refer to Engineer's drawings for details.



Soft Landscape Legend:

- Red line boundary
 - Existing trees to be retained & protected
Refer to Independent Tree Surveys drawings for details
 - Existing trees to be removed
Refer to Independent Tree Surveys drawings for details
 - Native Short Cut Floral Lawn of Irish Provenance: 'Short Cut Wildflower Mixture' (DW01 by 'Design by Nature') or equal and approved
 - Native Hedge planting:
Planted on low mound in a double staggered row, 4no./lin.m. (60-100cm tall with post and wire fence at centre):
10% Guelder rose: *Viburnum opulus*, b/r, 80-100cm
20% Hawthorn: *Crataegus monogyna*, b/r, 80-100cm
10% Blackthorn: *Prunus spinosa*, b/r, 100-120cm
10% Dog Rose: *Rosa canina*, b/r, 60-80cm
30% Holly: *Ilex aquifolium*, rb, 60-80cm
10% Spindle: *Euonymus europaeus*b/r, 60-80cm
10% Chery plum: *Prunus cerasifera*, b/r, 100-120cm
Under-planted with 20% Hart's Tongue Fern: *Asplenium scolopendrium*, 20% Hard Fern: *Blechnum spicant*, 30% Bloody Cranes-bill: *Geranium sanguineum*, 20% Wild Strawberry: *Fragaria vesca* and 10% Ivy: *Hedera hibernica* all 1L, planted at 3no./m² and seeded with native wildflower mix of Irish Provenance:
'Hedgerow Wildflower Mixture' (suitable for light shade - EC04 by 'Design by Nature') or equal and approved.
 - Specimen tree planting to include the following species: (all min. 2.0m clear stem)
Columar Oak: *Quercus robur* 'Fastigiata Koster', r/b, 18-20cm girth
Hornbeam: *Carpinus betulus* 'Frans Fontain', r/b, 18-20cm girth
Ornamental Pear: *Pyrus calleryana* 'Chanticleer', r/b, 18-20cm girth
Wild Cherry: *Prunus avium* 'Plena', r/b, 18-20cm girth
Beech: *Fagus sylvatica*, r/b, 20-25cm girth
Oak: *Quercus robur*, r/b, 20-25cm girth
Scots Pine: *Pinus sylvestris*, r/b, 18-20cm girth
Walnut: *Juglans regia*, r/b, 18-20cm girth
Sweet Chestnut: *Castanea sativa*, r/b, 18-20cm girth
Cherry Plum: *Prunus cerasifera*, r/b, 16-18cm girth
 - Shrub & Herbaceous planting:
To include the following pollinator mix species (but not limited to):
(typical plant sizes and planting density shown)
Sarcococca confusa, c/g, 3L, 3/sq.m
Berberis darwinii, c/g, 3L, 3/sq.m
Mahonia x media 'Charity', c/g, 5L, 3/sq.m
Ribes nigrum, c/g, 3L, 3/sq.m
Geranium 'Sweet Heidi', c/g, 2L, 4/sq.m
Buddleja davidii, c/g, 3L, 3/sq.m
Fuchsia 'Genii', c/g, 2L, 3/sq.m
Ribes rubrum, c/g, 3L, 3/sq.m
Erica carnea 'Nathalie', c/g, 2L, 3/sq.m
Bergenia 'Sunningdale', c/g, 2L, 3/sq.m
Lavandula angustifolia 'Imperial Gem', c/g, 2L, 3/sq.m
Laurus nobilis f. *angustifolia*, c/g, 10L, 3/sq.m
Rosmarinus officinalis 'Sissinghurst Blue', c/g, 2L, 3/sq.m
 - Bulb planting:
Daffodil: *Narcissus* 'Golden Echo', bulb, 18/sq.m.
Daffodil: *Narcissus* 'Tete-a-Tete', 18/sq.m.
Wood Anemone: *Anemone nemorosa*, 18/sq.m.
Snake's head fritillary: *Fritillaria meleagris*, 12/sq.m.
Bluebell: *Hyacinthoides non-scripta*, 18/sq.m.
 - Native wildflower meadow of Irish Provenance:
'Biodiversity Wildflower Meadow Mixture' (suitable for light shade - WF02 by 'Design by Nature') or equal and approved
 - Swale / Bio-retention Area
 - Bird box locations
 - Bat box locations
- Note: Refer to Engineer's drawings for details.

COPYRIGHT:
The design and details shown on this drawing are applicable to their project only and may not be reproduced in whole or in part or be used for any other project or purpose without the written permission of Limerick City and County Council with whom copyright resides.

DO NOT SCALE from this drawing. Use figured dimensions. Contractor to check all dimensions on site prior to commencement of works. Any discrepancies are to be referred to the ARCHITECT.

REVISIONS			
DATE	REV.	BY	CH. DESCRIPTION

Comhairle Cathrach & Contae Limerick
Limerick City & County Council

Transport & Mobility
Merchants Quay
Limerick

DATE: 2022-07-29
SCALE: 1:500
DRAWN: MS
CHECKED: MS
JOB NO: LCC190003

PROJECT:
TUS Moylish to City
Active Travel Scheme
STAGE:
Part 8 Planning

DRAWING TITLE:
Landscape Plan 2/4

DRAWING NO:
LP01

SHEET SIZE:
A1

REVISION:
00





Hard Landscape Legend:

- Footpath / Cycletrack - Refer to Engineer's drawings for details
- Road / Road Markings- Refer to Engineer's drawings for details
- Coloured Road Surfaces / Tactile Pavings and Crossings- Refer to Engineer's drawings for details



Soft Landscape Legend:

- Red line boundary
- Existing trees to be retained & protected Refer to Independent Tree Surveys drawings for details
- Existing trees to be removed Refer to Independent Tree Surveys drawings for details
- Native Short Cut Floral Lawn of Irish Provenance: 'Short Cut Wildflower Mixture' (DW01 by 'Design by Nature') or equal and approved
- Native Hedge planting: Planted on low mound in a double staggered row, 4no./lin.m. (60-100cm tall with post and wire fence at centre):
 - 10% Guelder rose: *Viburnum opulus*, b/r, 80-100cm
 - 20% Hawthorn: *Crataegus monogyna*, b/r, 80-100cm
 - 10% Blackthorn: *Prunus spinosa*, b/r, 100-120cm
 - 10% Dog Rose: *Rosa canina*, b/r, 60-80cm
 - 30% Holly: *Ilex aquifolium*, rb, 60-80cm
 - 10% Spindle: *Euonymus europaeus*, b/r, 60-80cm
 - 10% Chery plum: *Prunus cerasifera*, b/r, 100-120cm
- Under-planted with 20% Hart's Tongue Fern: *Asplenium scolopendrum*, 20% Hard Fern: *Blechnum spicant*, 30% Bloody Cranes-bill: *Geranium sanguineum*, 20% Wild Strawberry: *Fragaria vesca* and 10% Ivy: *Hedera hibernica* all 1L, planted at 3no./m² and seeded with native wildflower mix of Irish Provenance: 'Hedgerow Wildflower Mixture' (suitable for light shade - EC04 by 'Design by Nature') or equal and approved.
- Specimen tree planting to include the following species: (all min. 2.0m clear stem)
 - Columnar Oak: *Quercus robur* 'Fastigiata Koster', r/b, 18-20cm girth
 - Hornbeam: *Carpinus betulus* 'Frans Fontain', r/b, 18-20cm girth
 - Ornamental Pear: *Pyrus calleryana* 'Chanticleer', r/b, 18-20cm girth
 - Wild Cherry: *Prunus avium* 'Plena', r/b, 18-20cm girth
 - Beech: *Fagus sylvatica*, r/b, 20-25cm girth
 - Oak: *Quercus robur*, r/b, 20-25cm girth
 - Scots Pine: *Pinus sylvestris*, r/b, 18-20cm girth
 - Walnut: *Juglans regia*, r/b, 18-20cm girth
 - Sweet Chestnut: *Castanea sativa*, r/b, 18-20cm girth
 - Cherry Plum: *Prunus cerasifera*, r/b, 16-18cm girth

- Shrub & Herbaceous planting: To include the following pollinator mix species (but not limited to): (typical plant sizes and planting density shown)
 - Sarcococca confusa*, c/g, 3L, 3/sq.m
 - Berberis darwinii*, c/g, 3L, 3/sq.m
 - Mahonia x media* 'Charity', c/g, 5L, 3/sq.m
 - Ribes nigrum*, c/g, 3L, 3/sq.m
 - Geranium* 'Sweet Heidi', c/g, 2L, 4/sq.m
 - Buddleja davidii*, c/g, 3L, 3/sq.m
 - Fuchsia* 'Genii', c/g, 2L, 3/sq.m
 - Ribes rubrum*, c/g, 3L, 3/sq.m
 - Erica carnea* 'Nathalie', c/g, 2L, 3/sq.m
 - Bergenia* 'Sunningdale', c/g, 2L, 3/sq.m
 - Lavandula angustifolia* 'Imperial Gem', c/g, 2L, 3/sq.m
 - Laurus nobilis* f. *angustifolia*, c/g, 10L, 3/sq.m
 - Rosmarinus officinalis* 'Sissinghurst Blue', c/g, 2L, 3/sq.m
- Bulb planting:
 - Daffodil: *Narcissus* 'Golden Echo', bulb, 18/sq.m.
 - Daffodil: *Narcissus* 'Tete-a-Tete', 18/sq.m.
 - Wood Anemone: *Anemone nemorosa*, 18/sq.m.
 - Snake's head fritillary: *Fritillaria meleagris*, 12/sq.m.
 - Bluebell: *Hyacinthoides non-scripta*, 18/sq.m.
- Native wildflower meadow of Irish Provenance: 'Biodiversity Wildflower Meadow Mixture' (suitable for light shade - WF02 by 'Design by Nature') or equal and approved
- Swale / Bio-retention Area
- Bird box locations
- Bat box locations

Note: Refer to Engineer's drawings for details.

COPYRIGHT:
The design and details shown on this drawing are applicable to their project only and may not be reproduced in whole or in part or be used for any other project or purpose without the written permission of Limerick City and County Council with whom copyright resides.

DO NOT SCALE from this drawing. Use figured dimensions. Contractor to check all dimensions on site prior to commencement of works. Any discrepancies are to be referred to the ARCHITECT.

REVISIONS			
DATE	REV.	BY.	CH. DESCRIPTION

Comhairle Cathrach & Contae Limerick
Limerick City & County Council

Transport & Mobility
Merchants Quay
Limerick

DATE: 2022-07-29
SCALE: 1:500
DRAWN: MS
CHECKED: MS
JOB NO: LCC190003

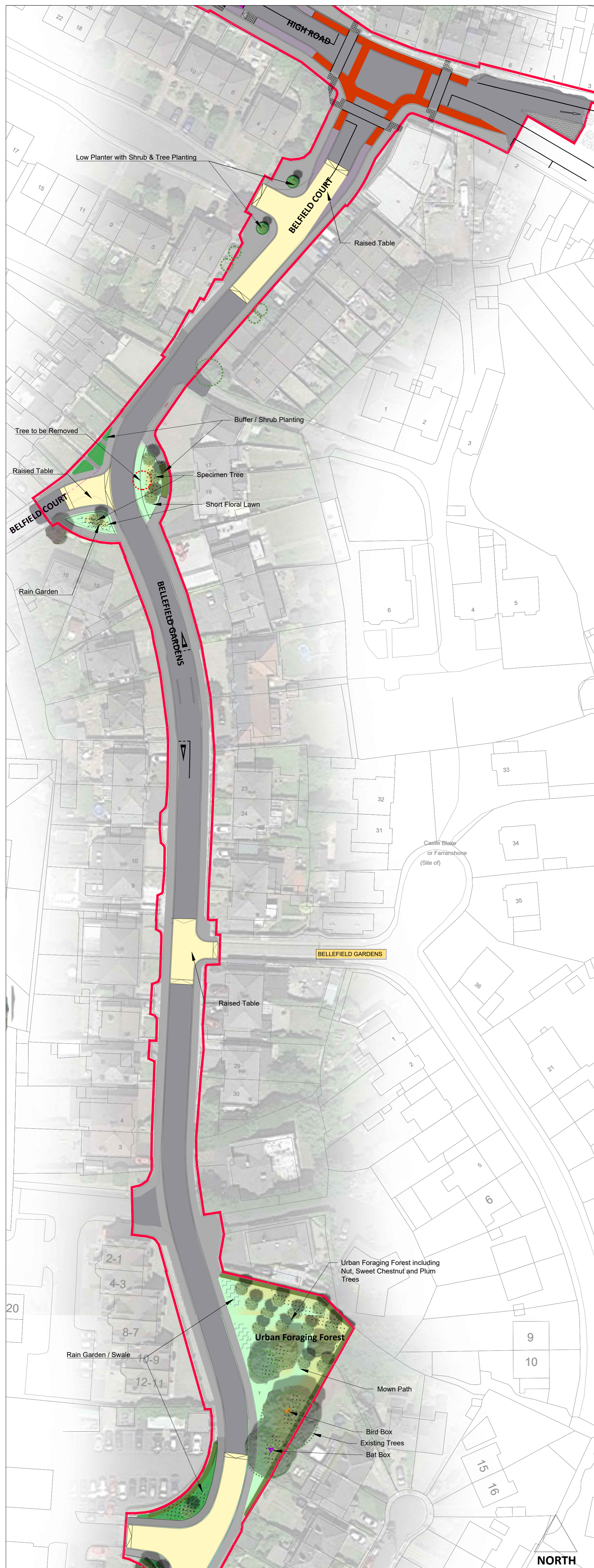
PROJECT:
TUS Moylish to City
Active Travel Scheme
STAGE:
Part 8 Planning

DRAWING TITLE:
Landscape Plan 3/4

DRAWING NO:
LP01

SHEET SIZE:
A1

REVISION:
00



Soft Landscape Legend:

- Red line boundary
- Existing trees to be retained & protected
Refer to Independent Tree Surveys drawings for details
- Existing trees to be removed
Refer to Independent Tree Surveys drawings for details
- Native Short Cut Floral Lawn of Irish Provenance:
'Short Cut Wildflower Mixture' (DW01 by 'Design by Nature') or equal and approved
- Native Hedge planting:
Planted on low mound in a double staggered row, 4no./lin.m. (60-100cm tall with post and wire fence at centre):
10% Guelder rose: *Viburnum opulus*, b/r, 80-100cm
20% Hawthorn: *Crataegus monogyna*, b/r, 80-100cm
10% Blackthorn: *Prunus spinosa*, b/r, 100-120cm
10% Dog Rose: *Rosa canina*, b/r, 60-80cm
30% Holly: *Ilex aquifolium*, rb, 60-80cm
10% Spindle: *Euonymus europaeus*, b/r, 60-80cm
10% Cherry plum: *Prunus cerasifera*, b/r, 100-120cm
Under-planted with 20% Hart's Tongue Fern: *Asplenium scolopendrium*, 20% Hard Fern: *Blechnum spicant*, 30% Bloody Cranes-bill: *Geranium sanguineum*, 20% Wild Strawberry: *Fragaria vesca* and 10% Ivy: *Hedera hibernica* all 1L, planted at 3no./m² and seeded with native wildflower mix of Irish Provenance:
'Hedgerow Wildflower Mixture' (suitable for light shade - EC04 by 'Design by Nature') or equal and approved.
- Specimen tree planting to include the following species:
(all min. 2.0m clear stem)
Columnar Oak: *Quercus robur* 'Fastigiata Koster', r/b, 18-20cm girth
Hornbeam: *Carpinus betulus* 'Frans Fontain', r/b, 18-20cm girth
Ornamental Pear: *Pyrus calleryana* 'Chanticleer', r/b, 18-20cm girth
Wild Cherry: *Prunus avium* 'Plena', r/b, 18-20cm girth
Beech: *Fagus sylvatica*, r/b, 20-25cm girth
Oak: *Quercus robur*, r/b, 20-25cm girth
Scots Pine: *Pinus sylvestris*, r/b, 18-20cm girth
Walnut: *Juglans regia*, r/b, 18-20cm girth
Sweet Chestnut: *Castanea sativa*, r/b, 18-20cm girth
Cherry Plum: *Prunus cerasifera*, r/b, 16-18cm girth
- Shrub & Herbaceous planting:
To include the following pollinator mix species (but not limited to):
(typical plant sizes and planting density shown)
Sarcococca confusa, c/g, 3L, 3/sq.m
Berberis darwinii, c/g, 3L, 3/sq.m
Mahonia x media 'Charity', c/g, 5L, 3/sq.m
Ribes nigrum, c/g, 3L, 3/sq.m
Geranium 'Sweet Heidi', c/g, 2L, 4/sq.m
Buddleja davidii, c/g, 3L, 3/sq.m
Fuchsia 'Genii', c/g, 2L, 3/sq.m
Ribes rubrum, c/g, 3L, 3/sq.m
Erica carnea 'Nathale', c/g, 2L, 3/sq.m
Bergenia 'Sunningdale', c/g, 2L, 3/sq.m
Lavandula angustifolia 'Imperial Gem', c/g, 2L, 3/sq.m
Laurus nobilis f. *angustifolia*, c/g, 10L, 3/sq.m
Rosmarinus officinalis 'Sissinghurst Blue', c/g, 2L, 3/sq.m
- Bulb planting:
Daffodil: *Narcissus* 'Golden Echo', bulb, 18/sq.m.
Daffodil: *Narcissus* 'Tete-a-Tete', 18/sq.m.
Wood Anemone: *Anemone nemorosa*, 18/sq.m.
Snake's head fritillary: *Fritillaria meleagris*, 12/sq.m.
Bluebell: *Hyacinthoides non-scripta*, 18/sq.m.
- Native wildflower meadow of Irish Provenance:
'Biodiversity Wildflower Meadow Mixture' (suitable for light shade - WF02 by 'Design by Nature') or equal and approved
- Swale / Bio-retention Area
- Bird box locations
- Bat box locations

Hard Landscape Legend:

- Footpath / Cycletrack - Refer to Engineer's drawings for details
- Road / Road Markings - Refer to Engineer's drawings for details
- Coloured Road Surfaces / Tactile Pavings and Crossings - Refer to Engineer's drawings for details

Note: Refer to Engineer's drawings for details.



COPYRIGHT:
The design and details shown on this drawing are applicable to their project only and may not be reproduced in whole or in part or be used for any other project or purpose without the written permission of Limerick City and County Council with whom copyright resides.

DO NOT SCALE from this drawing. Use figured dimensions. Contractor to check all dimensions on site prior to commencement of works. Any discrepancies are to be referred to the ARCHITECT.

REVISIONS				 Contracea Cathrach & Contae Limerigh Limerick City & County Council		PROJECT: TUS Moylish to City Active Travel Scheme Part 8 Planning	
DATE	REV.	BY	DESCRIPTION	JOB NO:	LCC190003	DRAWING NO.:	LP05
						DRAWING TITLE:	Landscape Plan 4/4
						DRAWING NO.:	LP05
						SHEET SIZE:	A1
						REVISION:	00

Private Garden | Native Hedge | Floral Lawn | TFI Bike Share Station | Footpath | Cycle Track | Bus Stop | Road | Parking | Cycle Track | Footpath | Shrub Buffer Planting | Private Dwelling



Specimen Tree & Floral Lawn

Existing Level

Section B

Private Garden | Specimen Tree, Shrub Planting & Native Hedge | Footpath | Cycle Track | Road | Specimen Tree & Bus Stop | Cycle Track | Share Surface | Private Dwelling / Garden



Raised Planter / Seating


Existing Level

Section A

COPYRIGHT:
The design and details shown on this drawing are applicable to their project only and may not be reproduced in whole or in part or be used for any other project or purpose without the written permission of Limerick City and County Council with whom copyright resides.

DO NOT SCALE from this drawing. Use figured dimensions. Contractor to check all dimensions on site prior to commencement of works. Any discrepancies are to be referred to the ARCHITECT.

REVISIONS			
DATE	REV.	BY	DESCRIPTION
-	-	-	-


 Comhairle Cathrach & Contae Limerick
 Limerick City & County Council
 Transport & Mobility
 Merchants Quay
 Limerick
 DATE: 2022-08-02
 SCALE: 1:50
 DRAWN: MS
 CHECKED: MS
 JOB NO: LCC190003

PROJECT:
TUS Moylish to City Active Travel Scheme
 STAGE:
Part 8 Planning
 DRAWING TITLE:
Landscape Sections
 DRAWING NO:
LS01

SHEET SIZE: A1	REVISION: 00
--------------------------	------------------------