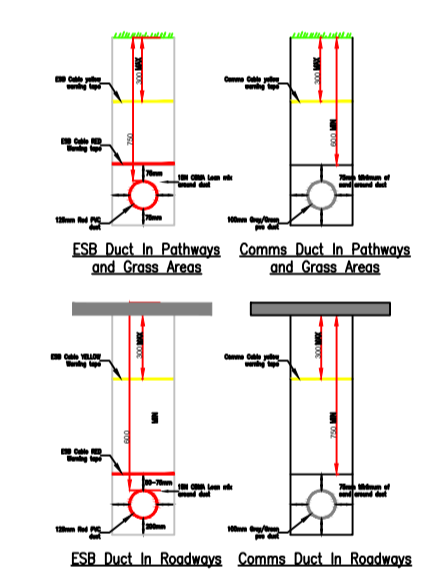
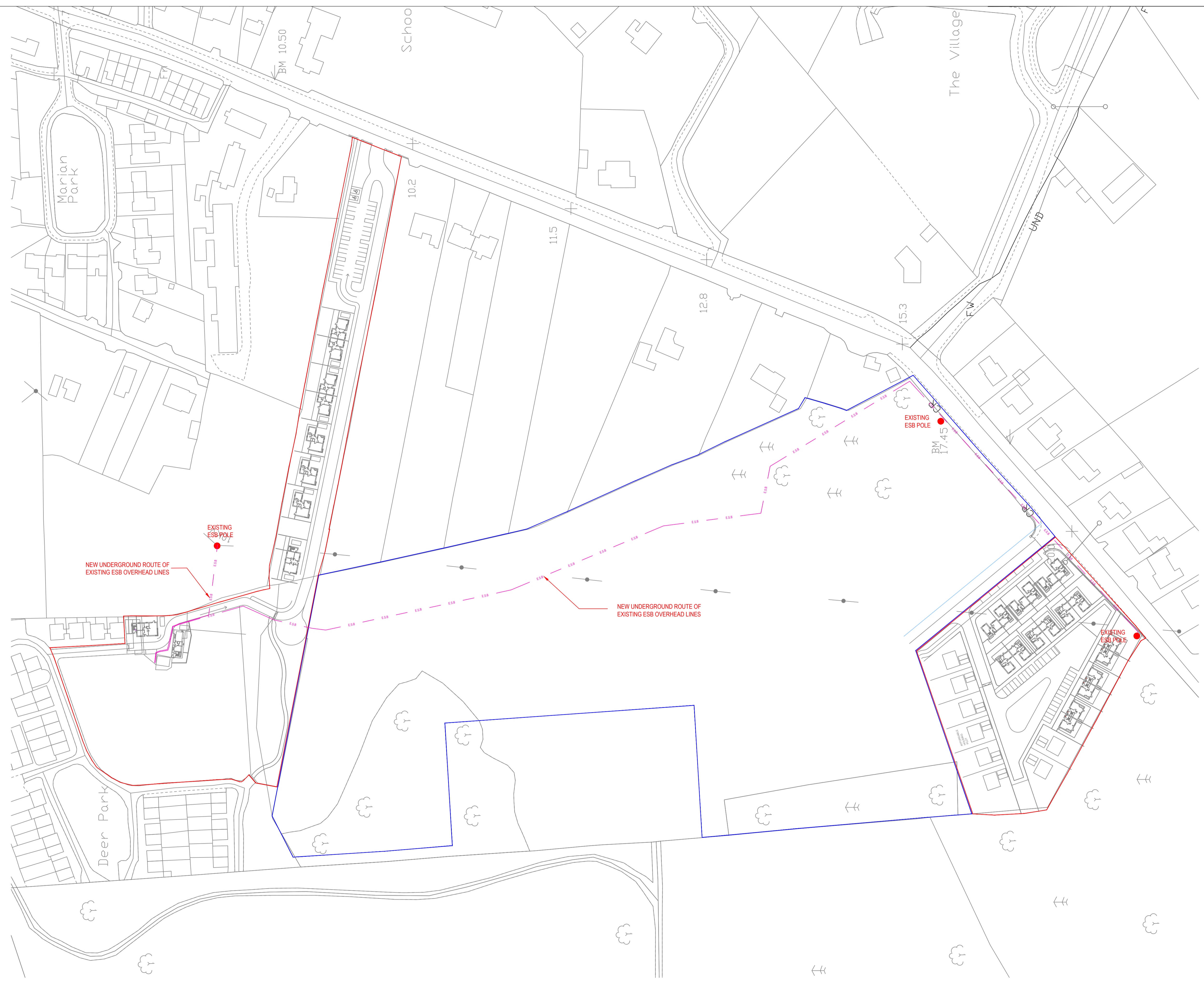


DO NOT SCALE FROM THIS DRAWING. USE FIGURED DIMENSIONS IN ALL CASES. VERIFY DIMENSIONS ON SITE AND REPORT ANY DISCREPANCIES TO THE DESIGNERS IMMEDIATELY.
 THIS DRAWING IS TO BE READ IN CONJUNCTION WITH THE DESIGNERS SPECIFICATION.
 © THIS DRAWING IS COPYRIGHT AND MAY ONLY BE REPRODUCED WITH THE DESIGNERS PERMISSION.

- NOTES:
1. ALL DRAWINGS ARE TO BE READ IN CONJUNCTION WITH ALL RELEVANT SPECIFICATIONS, BILLS OF QUANTITIES, ARCHITECTURAL, SERVICES AND ENGINEERING DRAWINGS.
 2. ALL LEVELS ARE IN METRES RELATED TO ORDNANCE DATUM MALIN HEAD.
 3. ANY DISCREPANCIES BETWEEN THESE DOCUMENTS SHALL BE BROUGHT TO THE ATTENTION OF THE ENGINEER.
 4. DRAWINGS ARE NOT TO BE SCALED.
 5. ALL DIMENSIONS ARE IN MILLIMETRES, UNLESS NOTED OTHERWISE.



REV	DATE	DESCRIPTION	ISS	BY	APP
A	15/10/2019	ISSUED FOR PLANNING	JS		DA

PROJECT: RESIDENTIAL DEVELOPMENT
DEERPARK, ADARE,
Co. LIMERICK

TITLE: RE-ROUTING OF OVERHEAD ELECTRICAL LINES

CLIENT: LIMERICK CITY AND COUNTY COUNCIL

Malachy Walsh and Partners
Engineering and Environmental Consultants
Cork | Tralee | London | Limerick

The Elm Suite,
Loughmore Centre,
Raheen Business Park,
Limerick,
V94 R578

Tel: +353 (0) 61 480164
Fax: +353 (0) 61 241125
E-mail: limerick@mwp.ie
Web: www.mwp.ie

DRAWN: JS	CHECKED: FF	APPROVED: DA
DATE: 15/10/2019	SCALE @ A1: 1:1000	
PROJECT NUMBER: 20734	DRAWING STATUS: S2	
DRAWING NUMBER: 20734-MWP-00-ZZ-DR-E-9101	REV: A	