

**DP0045-19-1**

Deerpark  
Adare - Limerick

Date: 15.10.2019  
Operator: Rodrigo Muñoz Montes

MicroPLUS Germany  
Carretera del Rio s/n  
49159 Villaralbo (Zamora)

Operator Rodrigo Muñoz Montes  
Telephone +34 663 774 901  
Fax  
e-Mail rodrigo@micropluswc.com

## Table of contents

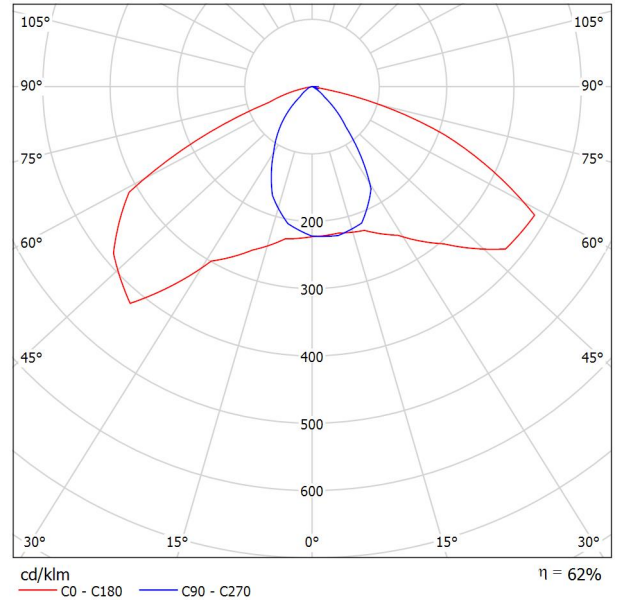
<b>DP0045-19-1</b>	
Project Cover	1
Table of contents	2
<b>MPG-1N 20W CANARIAS</b>	
Luminaire Data Sheet	3
<b>MPG-1N 30W CANARIAS</b>	
Luminaire Data Sheet	4
<b>MPG-1N 40W CANARIAS</b>	
Luminaire Data Sheet	5
<b>DP0045-19 - Deerpark Adare Limerick</b>	
Planning data	6
Luminaire parts list	7
Luminaires (coordinates list)	8
<b>Exterior Surfaces</b>	
<b>South Surface</b>	
Isolines (E, Perpendicular)	11
<b>North Surface</b>	
Isolines (E, Perpendicular)	12

MicroPLUS Germany  
Carretera del Rio s/n  
49159 Villaralbo (Zamora)

Operator Rodrigo Muñoz Montes  
Telephone +34 663 774 901  
Fax  
e-Mail rodrigo@micropluswc.com

## MPG-1N 20W CANARIAS / Luminaire Data Sheet

Luminous emittance 1:



Luminaire classification according to CIE: 100  
CIE flux code: 51 87 99 100 62

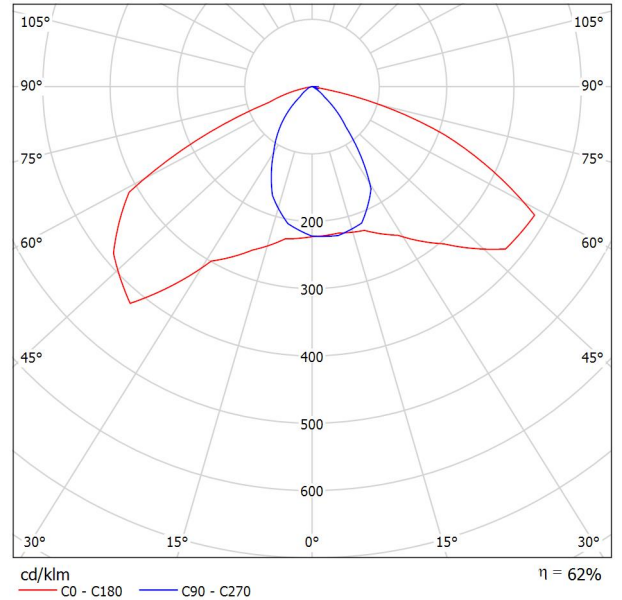
Due to missing symmetry properties, no UGR table can be displayed for this luminaire.

MicroPLUS Germany  
Carretera del Rio s/n  
49159 Villaralbo (Zamora)

Operator Rodrigo Muñoz Montes  
Telephone +34 663 774 901  
Fax  
e-Mail rodrigo@micropluswc.com

## MPG-1N 30W CANARIAS / Luminaire Data Sheet

Luminous emittance 1:



Luminaire classification according to CIE: 100  
CIE flux code: 51 87 99 100 62

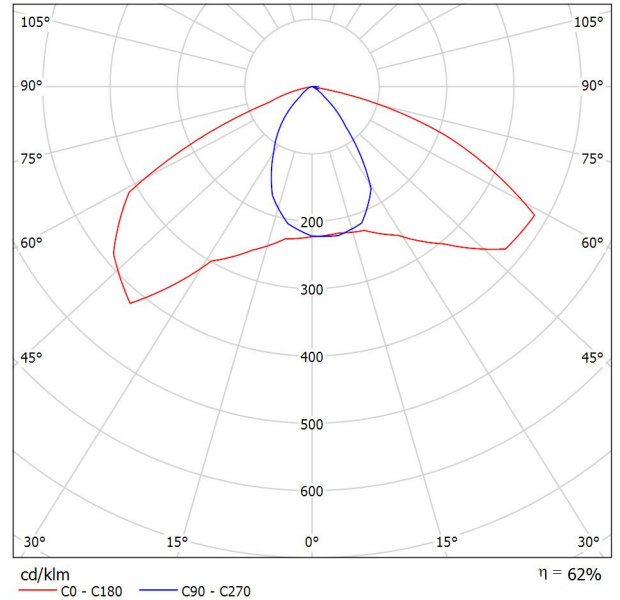
Due to missing symmetry properties, no UGR table can be displayed for this luminaire.

MicroPLUS Germany  
Carretera del Rio s/n  
49159 Villaralbo (Zamora)

Operator Rodrigo Muñoz Montes  
Telephone +34 663 774 901  
Fax  
e-Mail rodrigo@micropluswc.com

## MPG-1N 40W CANARIAS / Luminaire Data Sheet

Luminous emittance 1:



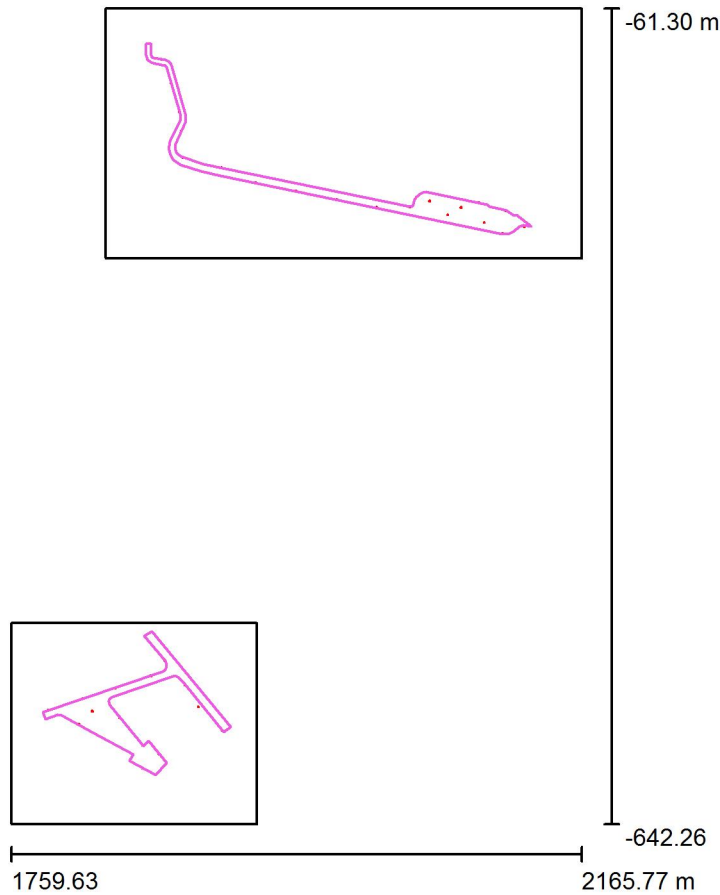
Luminaire classification according to CIE: 100  
CIE flux code: 51 87 99 100 62

Due to missing symmetry properties, no UGR table can be displayed for this luminaire.

MicroPLUS Germany  
Carretera del Rio s/n  
49159 Villaralbo (Zamora)

Operator Rodrigo Muñoz Montes  
Telephone +34 663 774 901  
Fax  
e-Mail rodrigo@micropluswc.com

**DP0045-19 - Deerpark Adare Limerick / Planning data**



Maintenance factor: 0.85, ULR (Upward Light Ratio): 0.0%

Scale 1:5385

**Luminaire Parts List**

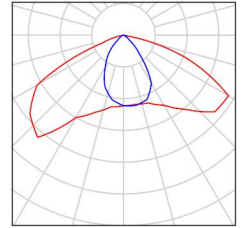
No.	Pieces	Designation (Correction Factor)	Φ (Luminaire) [lm]	Φ (Lamps) [lm]	P [W]
1	7	MPG-1N 20W CANARIAS (1.000)	1738	2786	20.0
2	23	MPG-1N 30W CANARIAS (1.000)	2607	4179	30.0
3	7	MPG-1N 40W CANARIAS (1.000)	3494	5600	40.2
			Total: 96598	Total: 154822	1111.4

MicroPLUS Germany  
Carretera del Rio s/n  
49159 Villaralbo (Zamora)

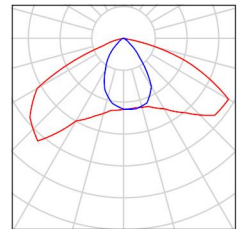
Operator Rodrigo Muñoz Montes  
Telephone +34 663 774 901  
Fax  
e-Mail rodrigo@micropluswc.com

## DP0045-19 - Deerpark Adare Limerick / Luminaire parts list

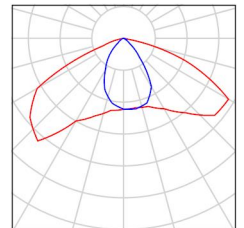
7 Pieces MPG-1N 20W CANARIAS  
Article No.: MPG-1N 20W CANARIAS  
Luminous flux (Luminaire): 1738 lm  
Luminous flux (Lamps): 2786 lm  
Luminaire Wattage: 20.0 W  
Luminaire classification according to CIE: 100  
CIE flux code: 51 87 99 100 62  
Fitting: 1 x User defined (Correction Factor 1.000).



23 Pieces MPG-1N 30W CANARIAS  
Article No.: MPG-1N 30W CANARIAS  
Luminous flux (Luminaire): 2607 lm  
Luminous flux (Lamps): 4179 lm  
Luminaire Wattage: 30.0 W  
Luminaire classification according to CIE: 100  
CIE flux code: 51 87 99 100 62  
Fitting: 1 x User defined (Correction Factor 1.000).



7 Pieces MPG-1N 40W CANARIAS  
Article No.: MPG-1N 40W CANARIAS  
Luminous flux (Luminaire): 3494 lm  
Luminous flux (Lamps): 5600 lm  
Luminaire Wattage: 40.2 W  
Luminaire classification according to CIE: 100  
CIE flux code: 51 87 99 100 62  
Fitting: 1 x User defined (Correction Factor 1.000).



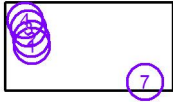
MicroPLUS Germany  
Carretera del Rio s/n  
49159 Villaralbo (Zamora)

Operator Rodrigo Muñoz Montes  
Telephone +34 663 774 901  
Fax  
e-Mail rodrigo@micropluswc.com

## DP0045-19 - Deerpark Adare Limerick / Luminaires (coordinates list)

### MPG-1N 20W CANARIAS

1738 lm, 20.0 W, 1 x 1 x User defined (Correction Factor 1.000).



No.	Position [m]			Rotation [°]		
	X	Y	Z	X	Y	Z
1	1880.600	-148.900	6.000	0.0	0.0	63.6
2	1879.593	-134.936	6.000	0.0	0.0	-71.4
3	1873.497	-114.382	6.000	0.0	0.0	-71.4
4	1866.921	-97.773	6.000	0.0	0.0	168.6
5	1865.000	-592.400	6.000	15.0	0.0	128.6
6	1853.200	-602.200	6.000	15.0	0.0	-25.6
7	2109.397	-221.873	6.000	0.0	0.0	-1.4



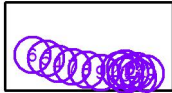
MicroPLUS Germany  
Carretera del Rio s/n  
49159 Villaralbo (Zamora)

Operator Rodrigo Muñoz Montes  
Telephone +34 663 774 901  
Fax  
e-Mail rodrigo@micropluswc.com

## DP0045-19 - Deerpark Adare Limerick / Luminaires (coordinates list)

### MPG-1N 30W CANARIAS

2607 lm, 30.0 W, 1 x 1 x User defined (Correction Factor 1.000).



No.	Position [m]			Rotation [°]		
	X	Y	Z	X	Y	Z
1	2096.295	-213.748	6.000	0.0	0.0	168.6
2	2079.762	-203.112	6.000	15.0	0.0	-11.4
3	2070.313	-208.316	6.000	0.0	0.0	168.6
4	1934.089	-185.452	6.000	10.0	0.0	-11.5
5	1909.220	-174.777	6.000	10.0	0.0	168.6
6	1881.989	-167.450	6.000	0.0	0.0	153.6
7	1962.800	-191.400	6.000	10.0	0.0	-11.5
8	1991.355	-197.537	6.000	10.0	0.0	-11.5
9	2019.800	-203.200	6.000	10.0	0.0	-11.5
10	1833.703	-545.165	6.000	10.0	0.0	-161.4
11	1858.800	-536.700	6.000	10.0	0.0	-161.4
12	1855.945	-509.693	6.000	0.0	0.0	-51.4
13	1869.158	-525.889	6.000	0.0	0.0	-51.4
14	1883.337	-543.064	6.000	0.0	0.0	-51.4
15	1892.869	-558.537	6.000	15.0	0.0	-51.4
16	1909.890	-575.653	6.000	0.0	0.0	-51.4
17	1853.200	-585.800	6.000	15.0	0.0	128.6
18	2069.422	-194.932	6.000	0.0	0.0	168.6
19	2111.938	-205.391	6.000	0.0	0.0	158.6
20	1817.384	-561.845	6.000	15.0	0.0	-40.0
21	2057.729	-198.593	6.000	0.0	0.0	-11.4
22	2092.536	-199.700	6.000	0.0	0.0	168.6
23	1810.354	-553.052	6.000	0.0	0.0	-161.4

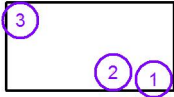
MicroPLUS Germany  
Carretera del Rio s/n  
49159 Villaralbo (Zamora)

Operator Rodrigo Muñoz Montes  
Telephone +34 663 774 901  
Fax  
e-Mail rodrigo@micropluswc.com

**DP0045-19 - Deerpark Adare Limerick / Luminaires (coordinates list)**

**MPG-1N 40W CANARIAS**

3494 lm, 40.2 W, 1 x 1 x User defined (Correction Factor 1.000).

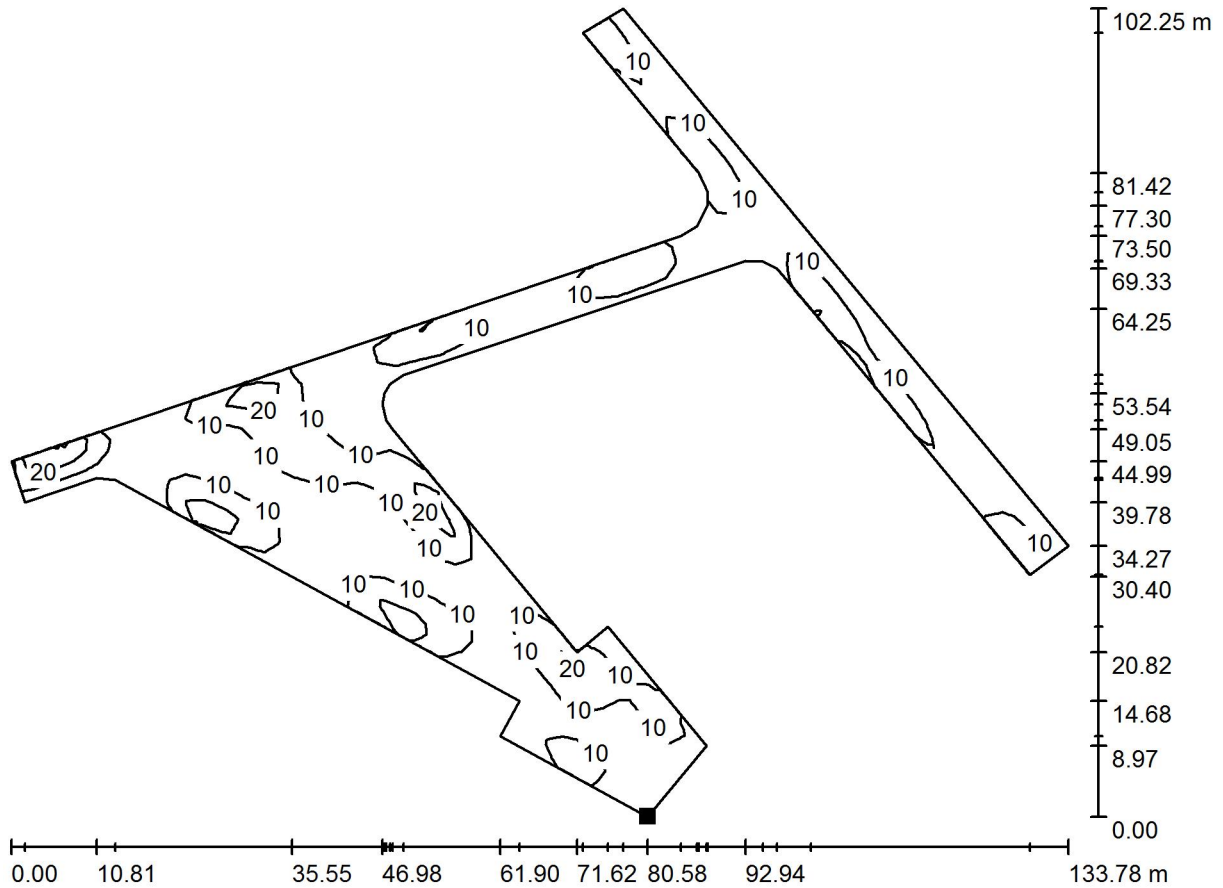


No.	Position [m]			Rotation [°]		
	X	Y	Z	X	Y	Z
1	2125.145	-216.684	6.000	0.0	0.0	3.6
2	2043.227	-202.529	6.000	0.0	0.0	168.6
3	1855.662	-89.837	6.000	0.0	0.0	-91.4
4	1785.964	-561.054	6.000	0.0	0.0	-161.4
5	1836.900	-566.400	6.000	15.0	0.0	128.6
6	1831.299	-584.288	6.000	15.0	0.0	-26.4
7	1807.836	-571.267	6.000	15.0	0.0	-24.5

MicroPLUS Germany  
Carretera del Rio s/n  
49159 Villaralbo (Zamora)

Operator Rodrigo Muñoz Montes  
Telephone +34 663 774 901  
Fax  
e-Mail rodrigo@micropluswc.com

**DP0045-19 - Deerpark Adare Limerick / South Surface / Isolines (E, Perpendicular)**



Values in Lux, Scale 1 : 957

Position of surface in external scene:  
Marked point:  
(1862.682 m, -607.313 m, 0.010 m)



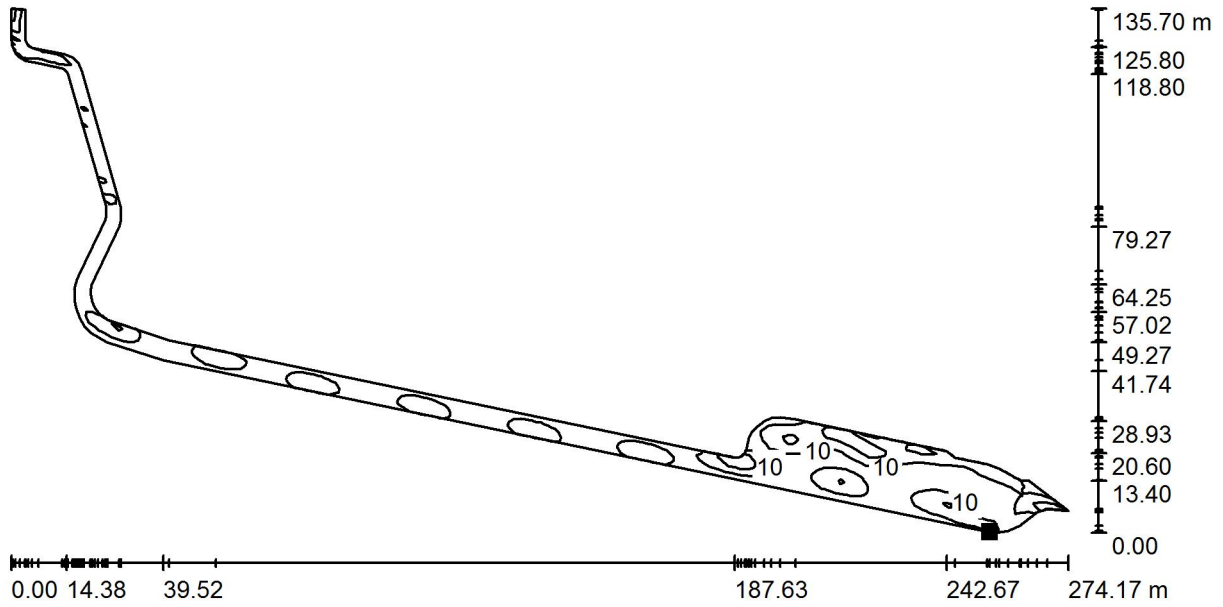
Grid: 50 x 50 Points

$E_{av}$ [lx]	$E_{min}$ [lx]	$E_{max}$ [lx]	$u_0$	$E_{min} / E_{max}$
10	1.66	29	0.164	0.057

MicroPLUS Germany  
Carretera del Rio s/n  
49159 Villaralbo (Zamora)

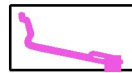
Operator Rodrigo Muñoz Montes  
Telephone +34 663 774 901  
Fax  
e-Mail rodrigo@micropluswc.com

**DP0045-19 - Deerpark Adare Limerick / North Surface / Isolines (E, Perpendicular)**



Values in Lux, Scale 1 : 1961

Position of surface in external scene:  
Marked point:  
(2109.397 m, -221.873 m, 0.001 m)



Grid: 75 x 70 Points

$E_{av}$ [lx]	$E_{min}$ [lx]	$E_{max}$ [lx]	$u_0$	$E_{min} / E_{max}$
10	1.52	30	0.147	0.050