

IMAGE A (THOMAS STREET)

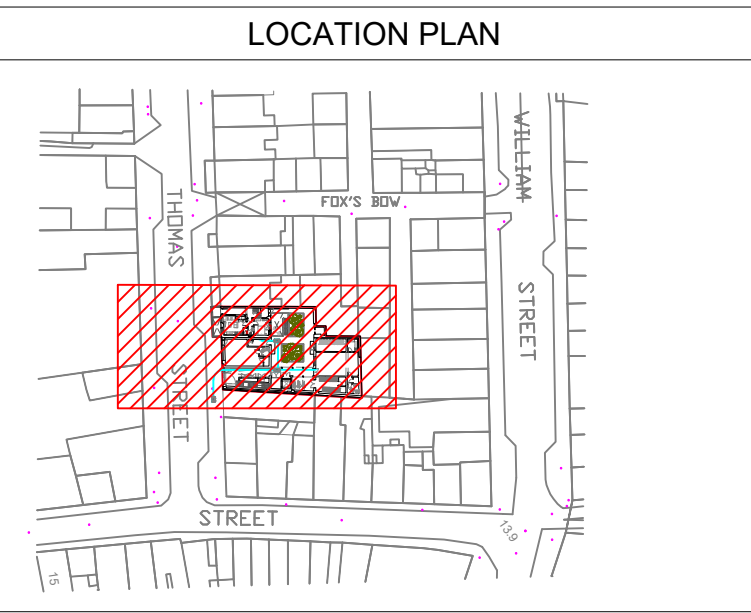


IMAGE B (THOMAS STREET)



IMAGE C (LIGHT FITTING TO BE RETAINED)



IMAGE D (LIGHT FITTING TO BE RETAINED)

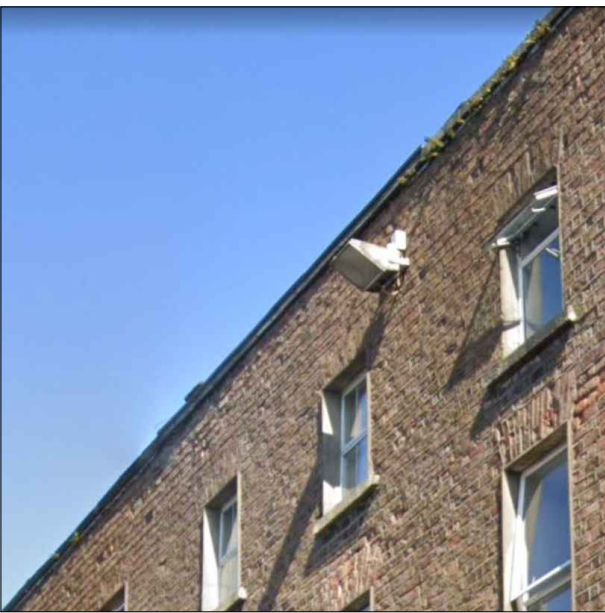


IMAGE E (LIGHT FITTING TO BE RETAINED)

LIGHT FITTING SCHEDULE		
TYPE - A	BOLLARD TYPE LUMINAIRE - THORN RAZE BOLLARD (06631807)	
2	INSTALLATION TYPE	BOLLARD FLANGE MOUNTED
3	LIGHT SOURCE	15W LED, CLASS 1 ELECTRICAL
4	CORRELATED COLOUR TEMP.	4000K
5	CONTROL GEAR, DALI CONTROL	FIXED OUTPUT CONTROL GEAR, NO DALI CONTROL
6	HOUSING, COLOUR, DIFFUSER	900mm HIGH DIE CAST ALUMINIUM BODY WITH A UV STABILIZED POLYCARBONATE, SEMI FROSTED DIFFUSER
7	LUMINOUS FLUX, EFFICACY	696 lm, 46 lm/W
8	CHROMATICITY TOLERANCE (INITIAL, MACADAM)	3
9	COLOUR RENDERING INDEX MIN.	70
10	MAINTENANCE CATEGORY	IP66, IK08
11	RATED MEDIAN USEFUL LIFE	L70 100000h at 25°C
TYPE - B	BOLLARD TYPE LUMINAIRE - THORN RAZE WALL MOUNT (06631801)	
2	INSTALLATION TYPE	BOLLARD FLANGE MOUNTED
3	LIGHT SOURCE	15W LED, CLASS 1 ELECTRICAL
4	CORRELATED COLOUR TEMP.	4000K
5	CONTROL GEAR, DALI CONTROL	FIXED OUTPUT CONTROL GEAR, NO DALI CONTROL
6	HOUSING, COLOUR, DIFFUSER	900mm HIGH DIE CAST ALUMINIUM BODY WITH A UV STABILIZED POLYCARBONATE, SEMI FROSTED DIFFUSER
7	LUMINOUS FLUX, EFFICACY	1142 lm, 76 lm/W
8	CHROMATICITY TOLERANCE (INITIAL, MACADAM)	3
9	COLOUR RENDERING INDEX MIN.	70
10	MAINTENANCE CATEGORY	IP66, IK08
11	RATED MEDIAN USEFUL LIFE	L70 100000h at 25°C

P1	13-12-22	ISSUED FOR PLANNING	JN	P
Rev	Date	Description	(Drawn)	Ch

Drawing Status: **FOR PLANNING**

**Don O'Malley & Partners**  
Consulting Engineers - Building Services

92 O Connel Street, Limerick Ireland  
Tel: +353 (0)61318677  
Email: services@domalley.com  
Web: www.domalley.com

Approved: PAT CONDON  
Checked: PAT CONDON  
Drawn: J. NORTJE  
Date: 2022/12/13

Architect: PKA  
PKA Paul Keogh Architects,  
Cathedral Court, New Street,  
Dublin  
Client: Limerick City and  
County Council

Project: 33/34 Thomas Street  
Limerick Georgian Housing  
Title: Electrical Installation  
Lighting Layout

Scale: 1:100 @ A1  
Job Number: 2289  
Status:

Drawing Number: **E101**  
Client Drawing Number:

COPYRIGHT ©  
No part of this document may be re-produced or transmitted in any form or stored in any retrieval system of any nature without the written permission of the Consultant as copyright holder except as agreed for use on the project for which the document was originally written.