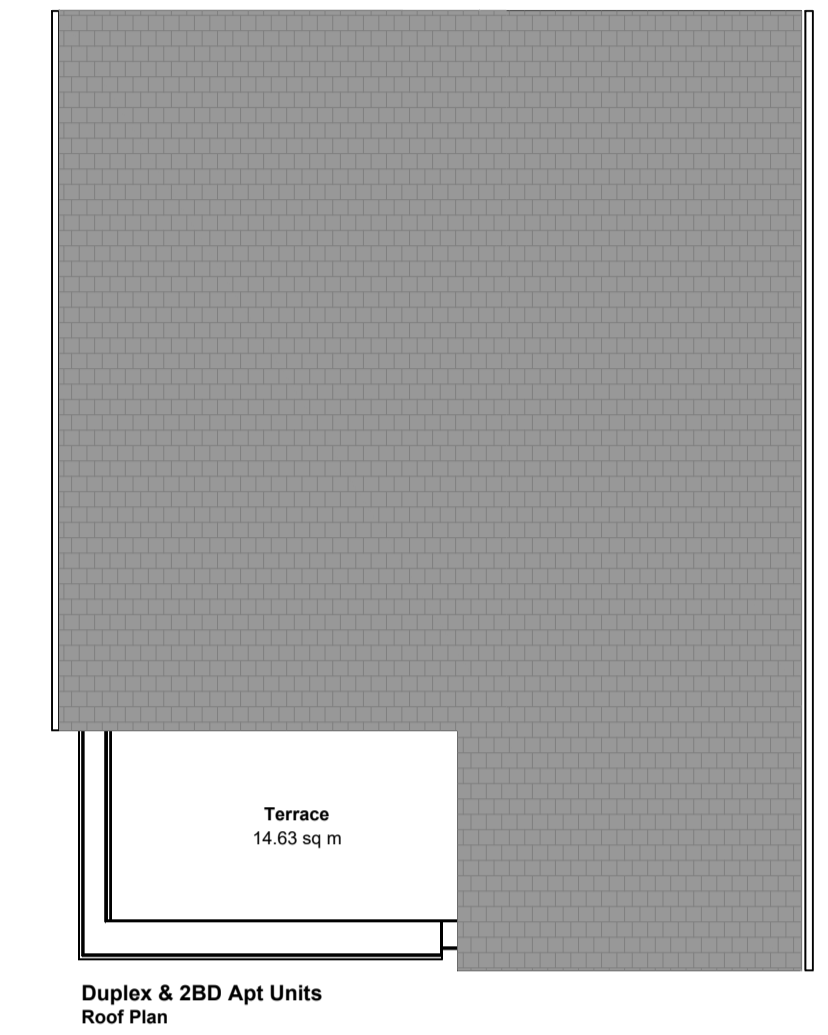
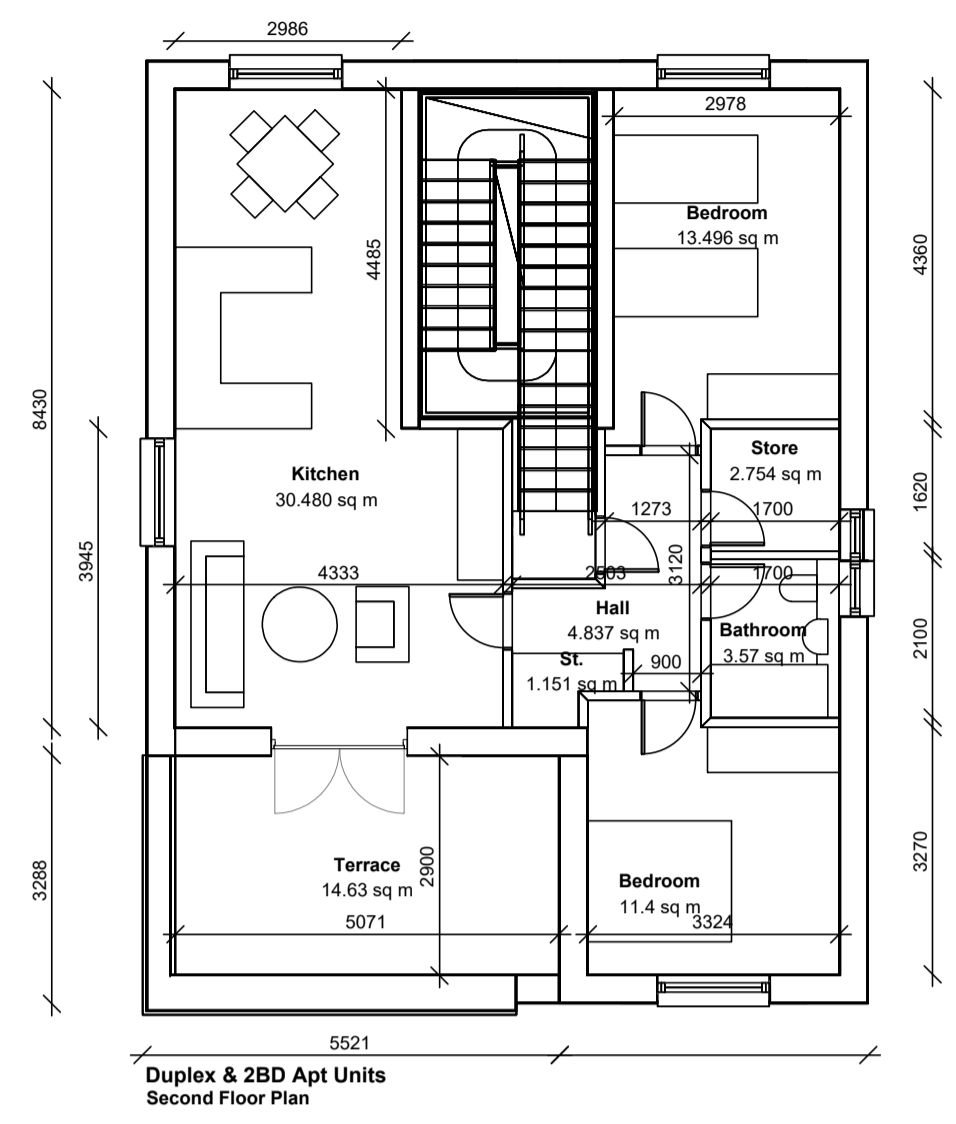
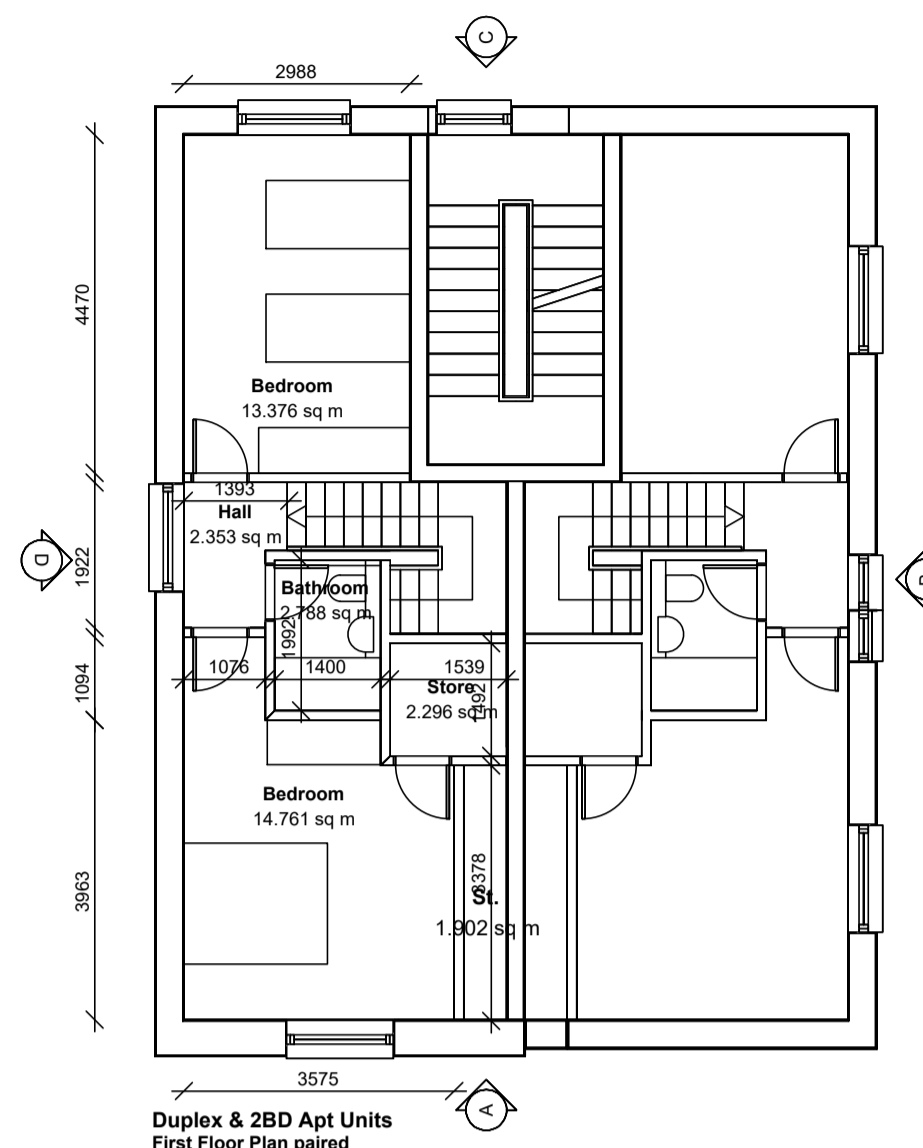
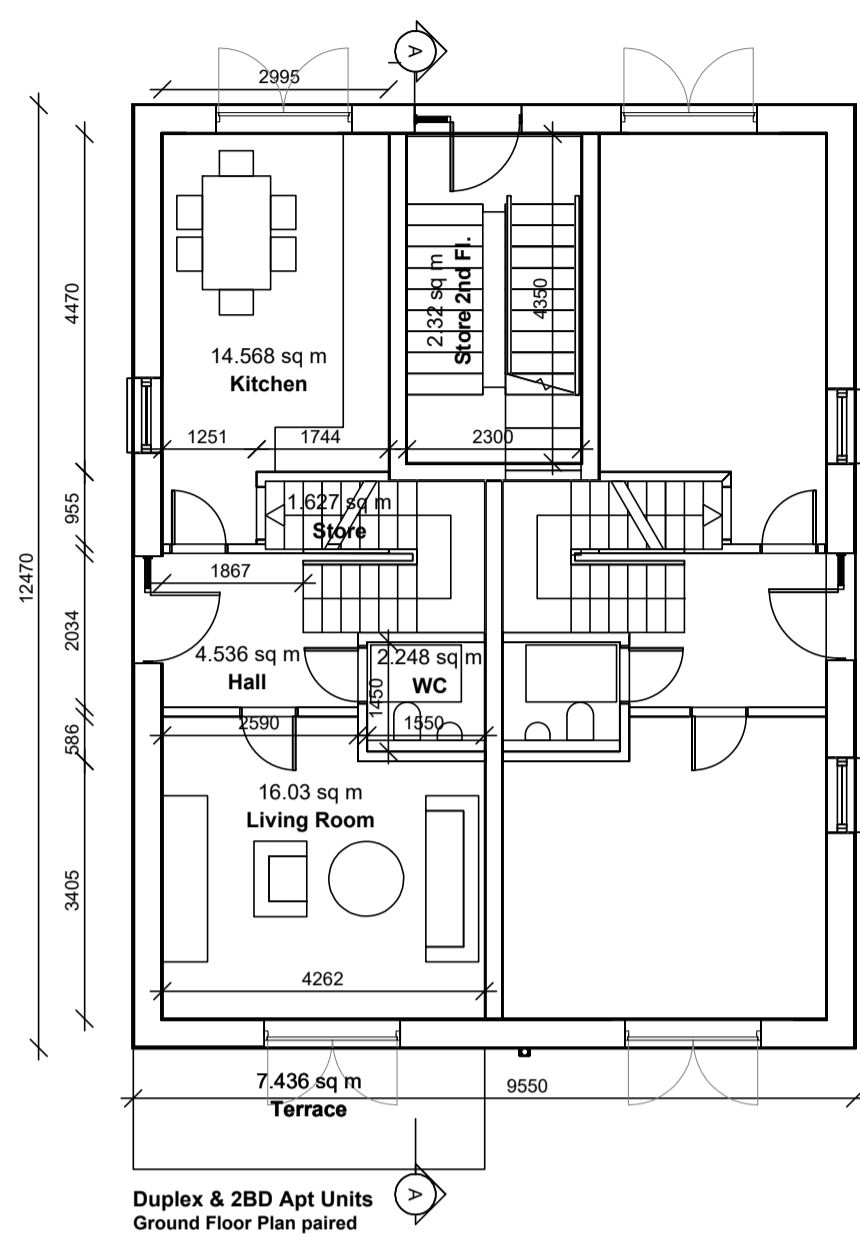
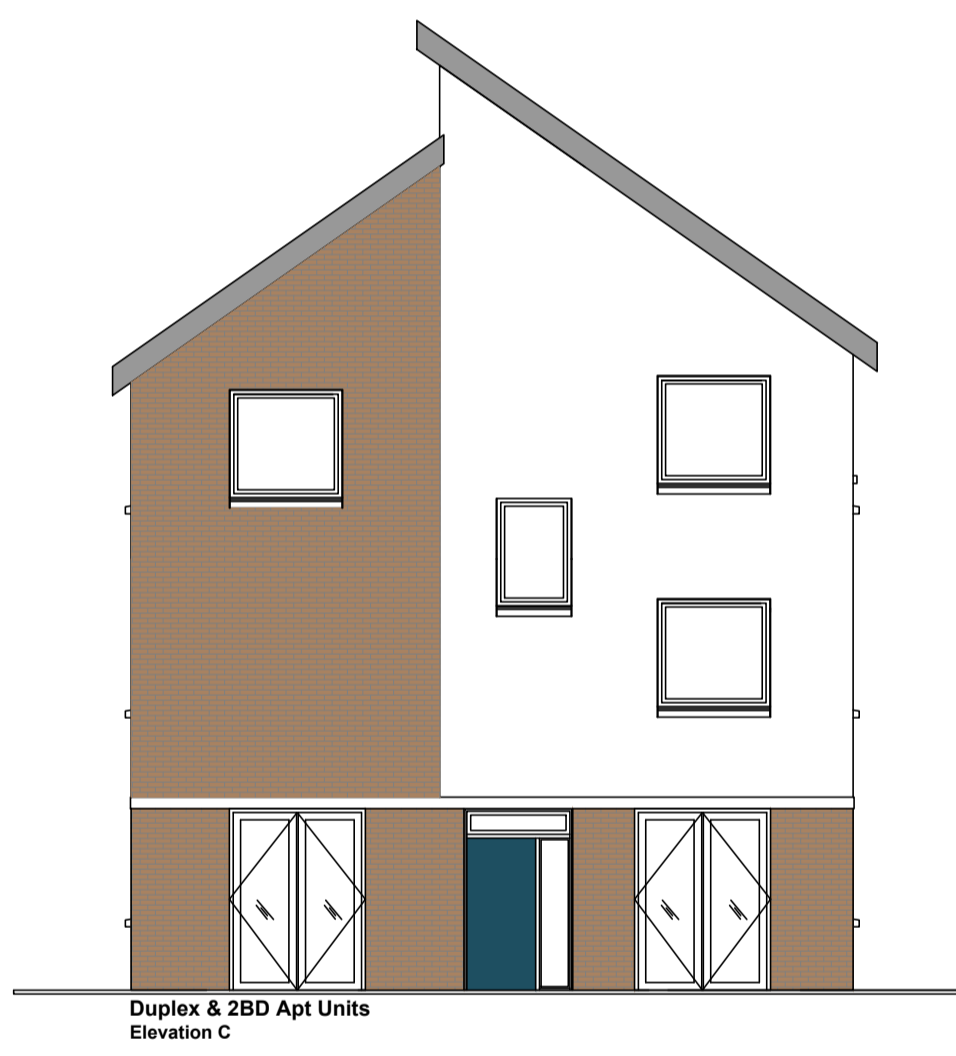
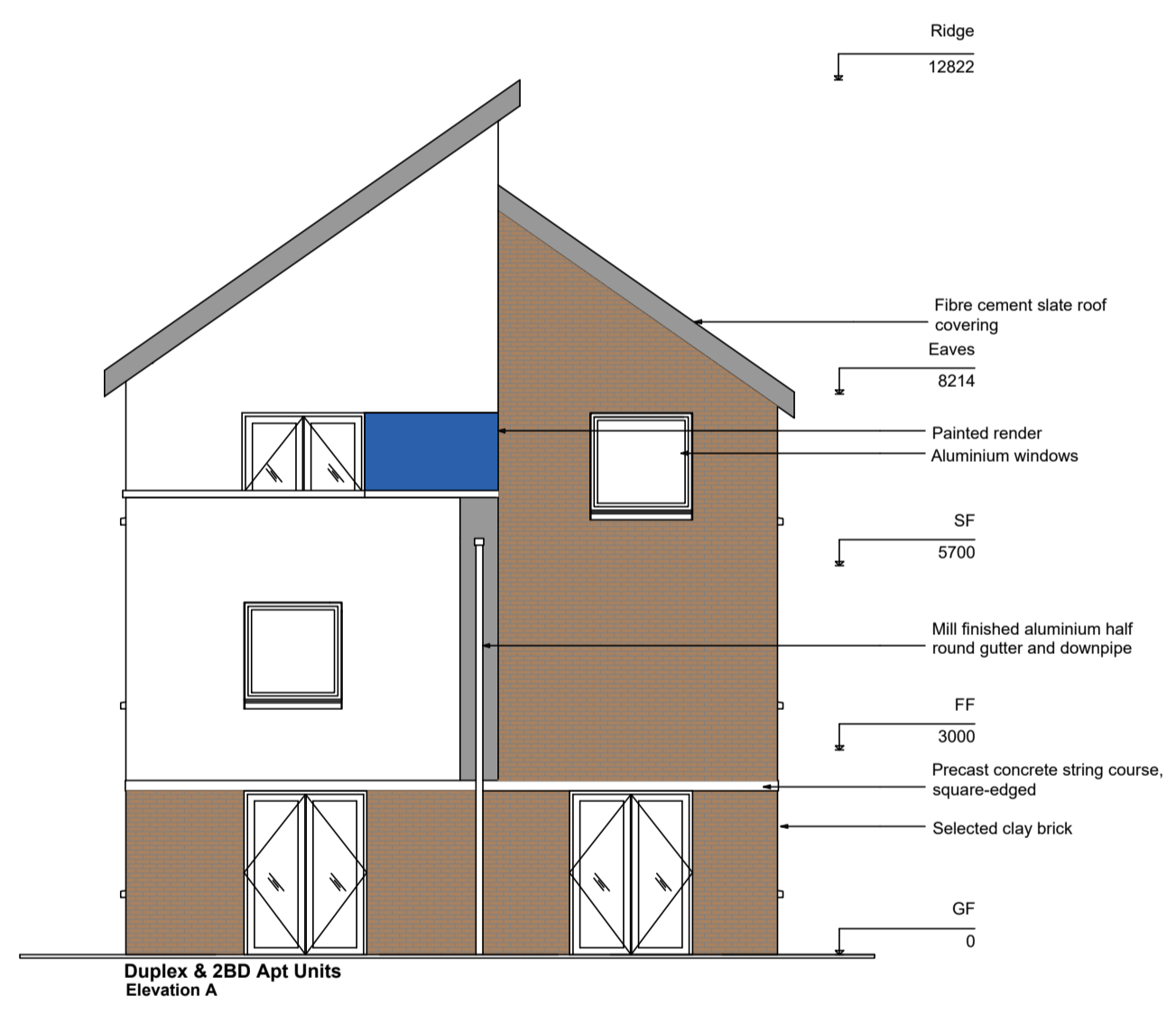


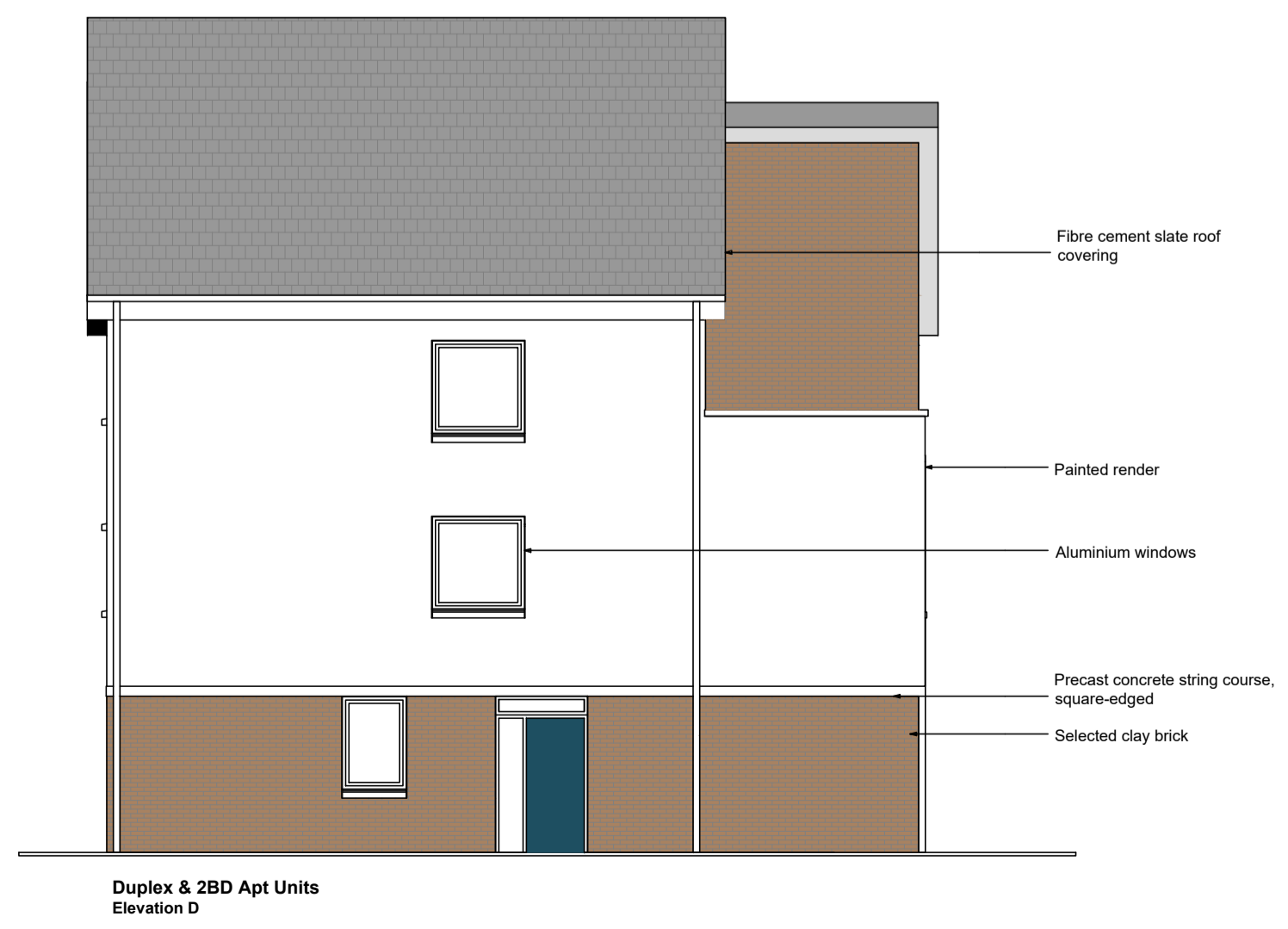
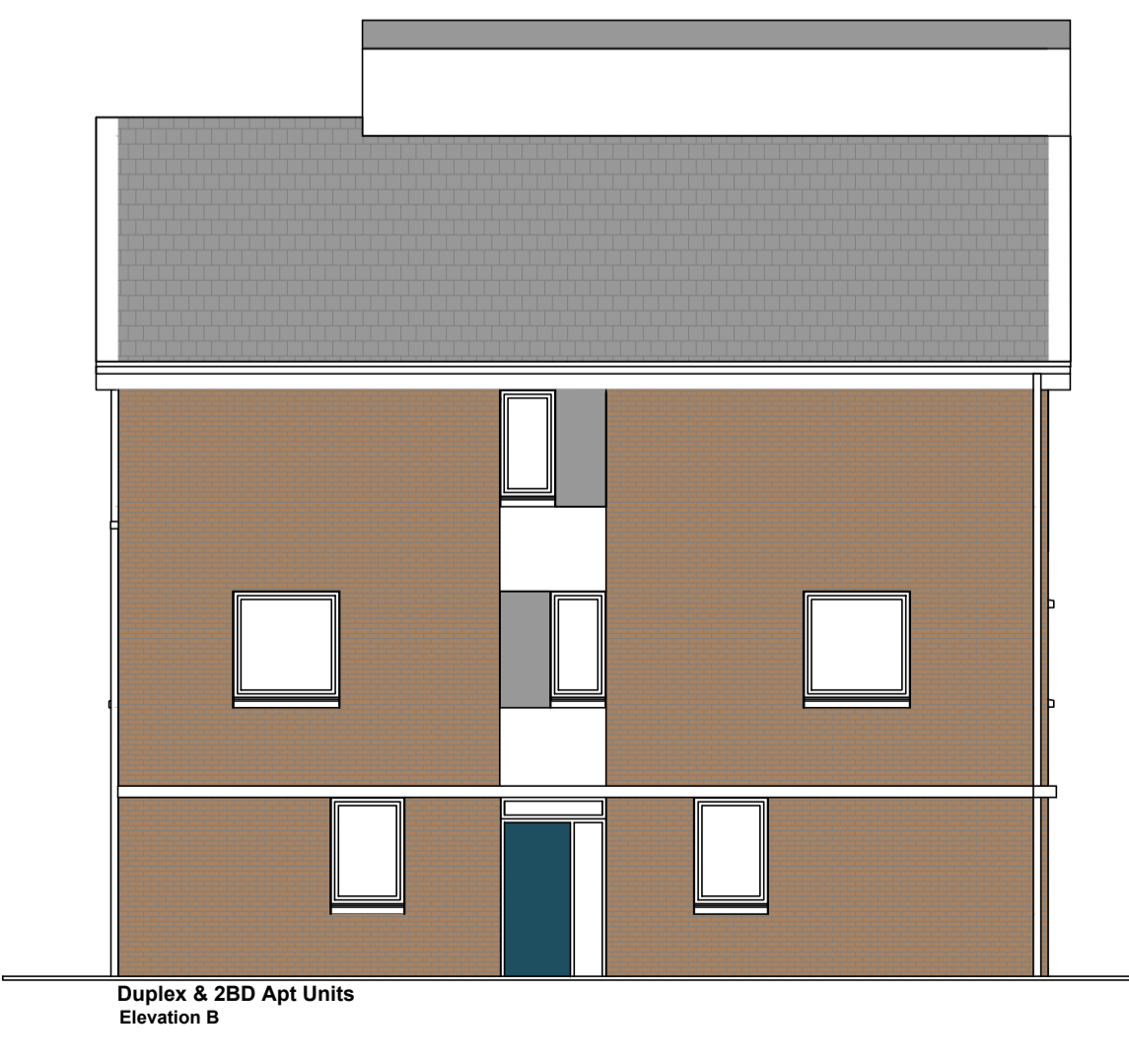
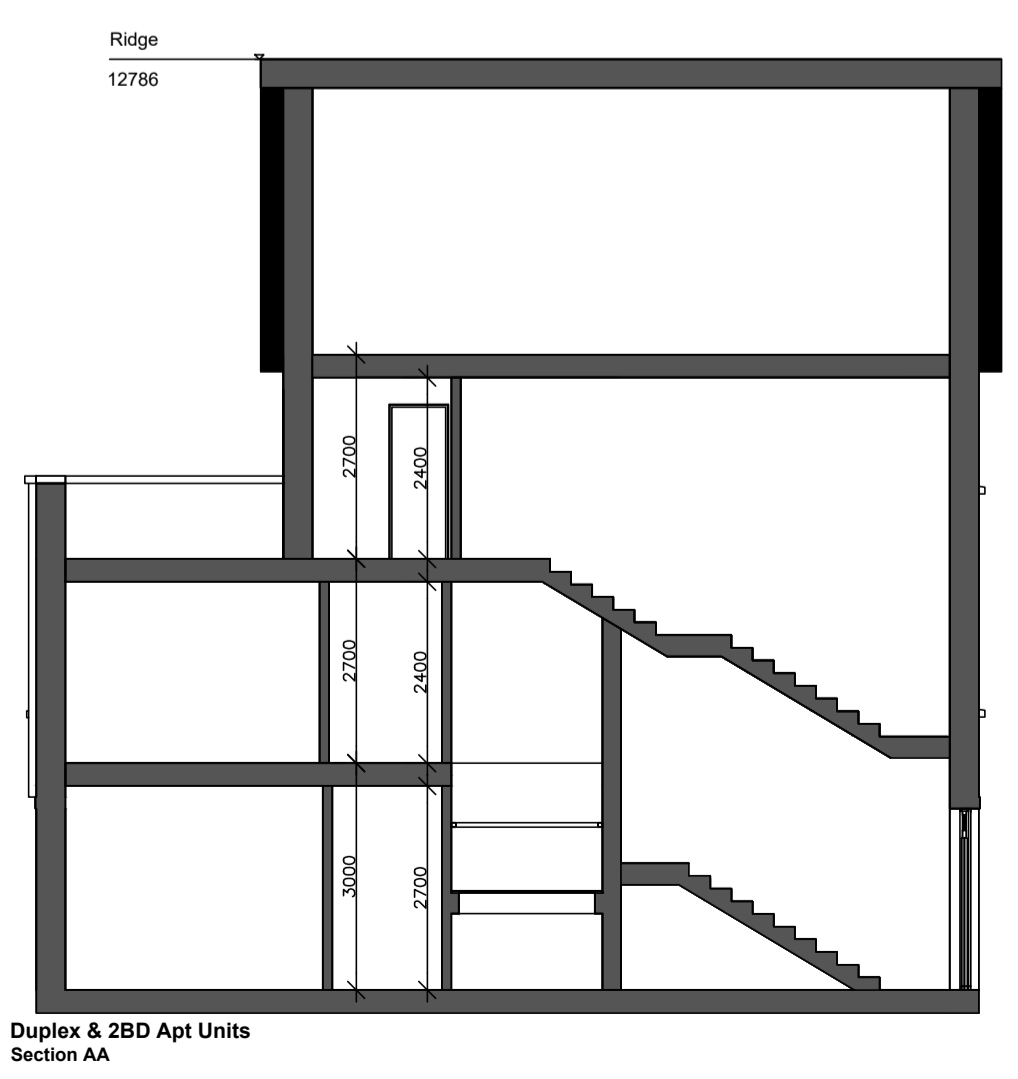
GENERAL NOTES:
 A. THIS DRAWING TO BE READ IN CONJUNCTION WITH ALL RELEVANT ARCHITECTURAL DRAWINGS THE SPECIFICATION AND ALL RELEVANT STANDARD DETAIL DRAWINGS.
 B. THIS DRAWING TO BE READ IN CONJUNCTION WITH ALL RELEVANT CIVIL, STRUCTURAL, MECHANICAL AND ELECTRICAL DRAWINGS TOGETHER WITH THE SPECIFICATIONS AND SCHEDULES.
 C. ALL DIMENSIONS IN MILLIMETERS. DO NOT SCALE FROM THIS DRAWING. USE FIGURED DIMENSIONS ONLY.
 D. CONTRACTOR MUST VERIFY ALL DIMENSIONS ON SITE BEFORE SETTING OUT COMMENCING WORK OR PRODUCING ANY SHOP DRAWINGS.



UNIT TYPE SCHEDULE OF ACCOMMODATION		
Unit Type	Room Name	Room Area
2B/4P Duplex GIA 88.08 sqm	Bathroom	2.788 sq m
	Bedroom	13.376 sq m
	Bedroom	14.761 sq m
	Hall	2.353 sq m
	Hall	4.536 sq m
	Kitchen	14.568 sq m
	Living Room	16.03 sq m
	St.	1.902 sq m
	Store	1.627 sq m
	Store	2.296 sq m
	Store 2nd Fl.	2.32 sq m
	Terrace	7.436 sq m
	WC	2.248 sq m
Aggregate Living	30.6 sq m	
Aggregate Bedroom	25.44 sqm	
Aggregate Storage	8.32 sq m	



UNIT TYPE SCHEDULE OF ACCOMMODATION		
Unit Type	Room Name	Room Area
2B/4P Apt GIA 102.88 sq m	Bathroom	3.57 sq m
	Bedroom	11.4 sq m
	Bedroom	13.496 sq m
	Hall	4.837 sq m
	Kitchen	30.48 sq m
	St.	1.151 sq m
	Store	2.754 sq m
	Terrace	14.63 sq m
	Store	2.42 sq m
	Aggregate Living	30.63 sq m
	Aggregate Bedroom	25.0 sqm
Aggregate Storage (incl. GF store stairs)	6.22 sqm	



Revisions	Date

20 Cruises Street Limerick V94 R6P9 Ireland (061) 312249 limerick@eml.ie
 63 Fitzwilliam Sq Dublin 2 D02 N938 Ireland (01) 6707677 dublin@eml.ie
 www.eml.ie

Client	Limerick City & County Council	Date	19/09/23
Job	Mungret Residential Development, Mungret, Co.Limerick	Scale @ A1	1:100
Job	Mungret Residential Development, Mungret, Co.Limerick	Drawn	CS
Job	Mungret Residential Development, Mungret, Co.Limerick	Checked	ML
Title	2B/4P Town House Block Plans, Elevations & Section	Drawing No.	3479-EML-XXX-XX-DR-A-0113
		Rev	