

GENERAL NOTES:

A. THIS DRAWING TO BE READ IN CONJUNCTION WITH ALL RELEVANT ARCHITECTURAL DRAWINGS THE SPECIFICATION AND ALL RELEVANT STANDARD DETAIL DRAWINGS.

B. THIS DRAWING TO BE READ IN CONJUNCTION WITH ALL RELEVANT CIVIL, STRUCTURAL, MECHANICAL AND ELECTRICAL DRAWINGS TOGETHER WITH THE SPECIFICATIONS AND SCHEDULES.

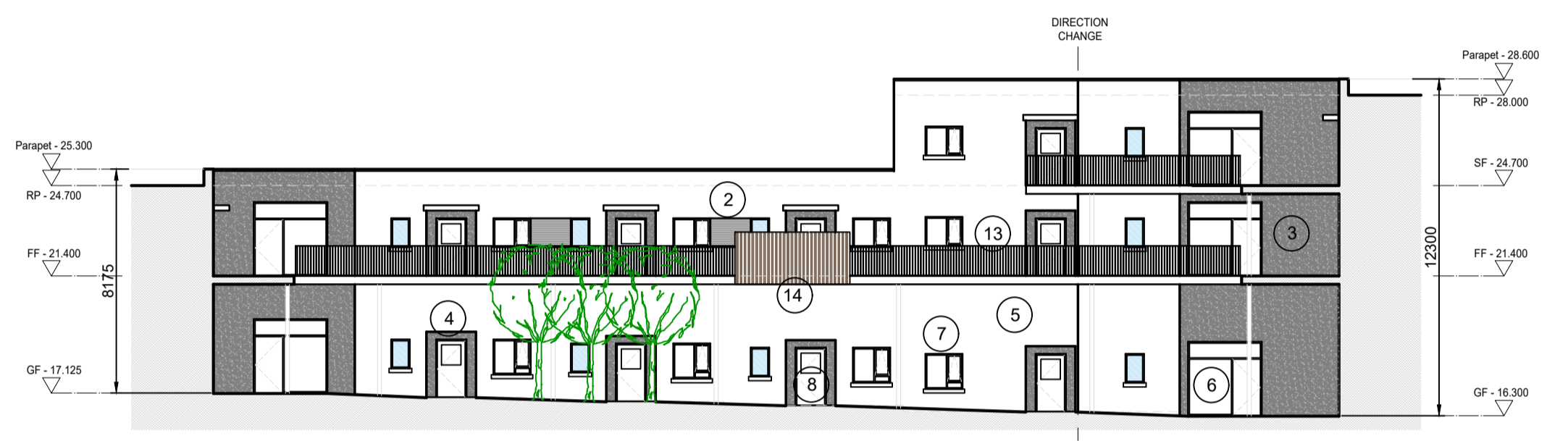
C. ALL DIMENSIONS IN MILLIMETERS. DO NOT SCALE FROM THIS DRAWING. USE FIGURED DIMENSIONS ONLY.

D. CONTRACTOR MUST VERIFY ALL DIMENSIONS ON SITE BEFORE SETTING OUT COMMENCING WORK OR PRODUCING ANY SHOP DRAWINGS.

- LEGEND:**
- 1: Selected clay face brick - Colour: 'Dark Grey'
 - 2: Selected clay face brick - Colour: 'Buff'
 - 3: Smooth coloured render - Colour: 'Dark Grey'.
 - 4: Smooth coloured render - Colour: 'Varies'.
 - 5: Smooth coloured render - Colour: 'Off White'.
 - 6: Powdercoated aluminium shopfront / curtain wall - Colour: 'Dark Grey'.
 - 7: Powdercoated aluminium/timber windows - Colour: 'Dark Grey'.
 - 8: Hardwood / Composite doors - Colour: 'Varies'.
 - 9: Powdercoated steel service door - Colour: 'Dark Grey'.
 - 10: Powdercoated steel louvers - Colour: 'Dark Grey'.
 - 11: Smooth coloured render to low level garden walls - Colour: 'Off White'.
 - 12: Glass Balustrades to selected balconies.
 - 13: Painted metal railings - Colour: 'Dark Grey'.
 - 14: Timber side screens to balconies.
 - 15: Solar photovoltaic panels



1 SOUTH ELEVATION - COURT YARD
1302 1:200



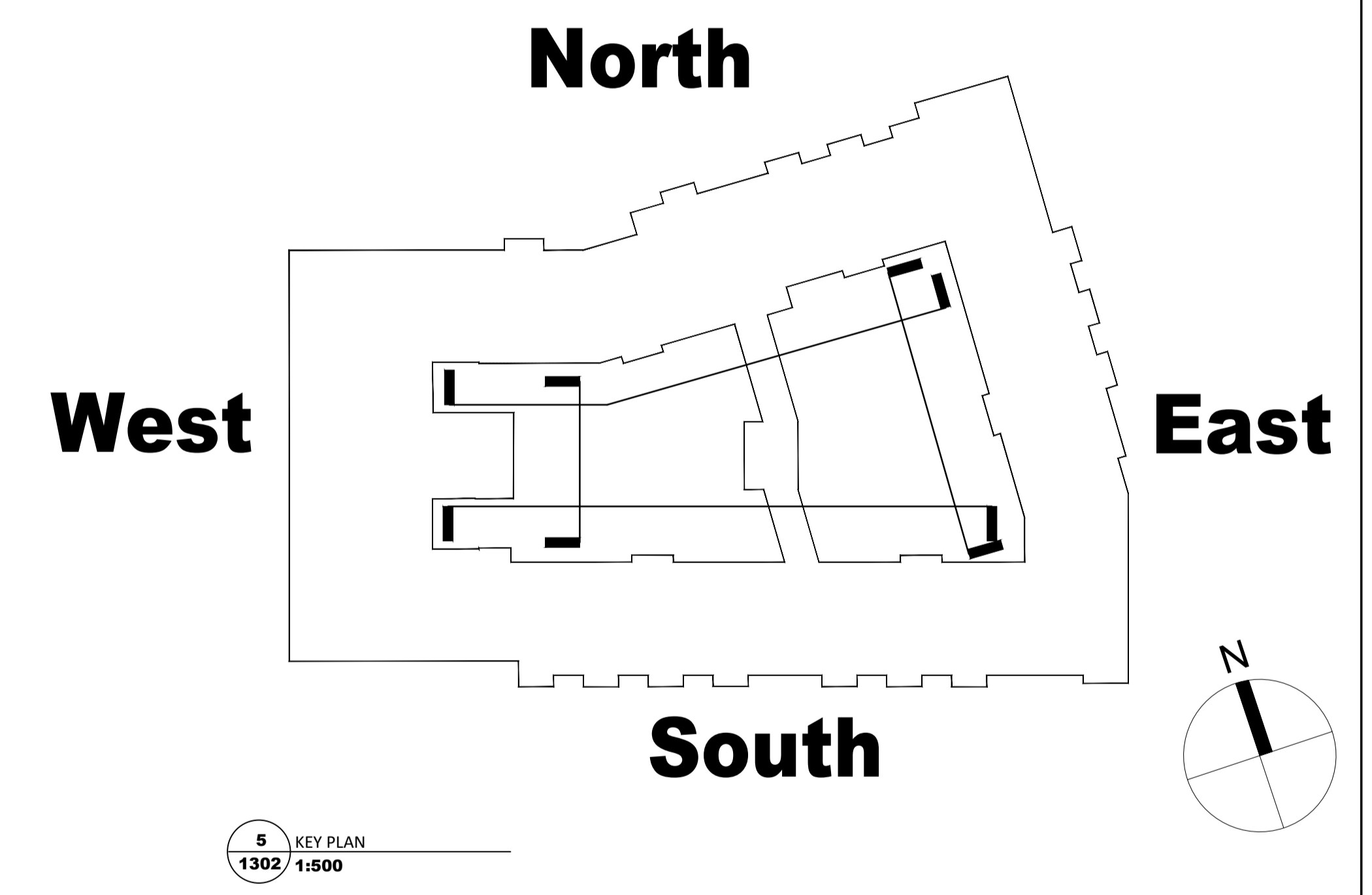
2 WEST ELEVATION - COURT YARD
1302 1:200



3 NORTH ELEVATION - COURT YARD
1302 1:200



4 EAST ELEVATION - COURT YARD
1302 1:200



5 KEY PLAN
1302 1:500

Revisions	Date
<p>e ml architects</p> <p>20 Cruises street Limerick V94 R6P9 Ireland telephone (061) 312249 e-mail limerick@eml.ie</p> <p>63 Fitzwilliam sq Dublin 2 D02 N938 Ireland telephone (01) 6707677 e-mail dublin@eml.ie</p>	
<p>Client Limerick City & County Council</p>	<p>Date 22/10/2023</p>
<p>Job Mungret Residential Development, Mungret, Co.Limerick</p>	<p>Scale @ A1 1:200</p> <p>Drawn CS</p> <p>Checked ML</p>
<p>Title Independent Living for Older Persons Elevations - Court Yard</p>	<p>Drawing No. 3479-EML-XX-XX-DR-A-1302</p> <p>Rev</p>