

COPYRIGHT
The design and details shown on this drawing are applicable to the project only and may not be reproduced in whole or in part or be used for any other project or purpose without the written permission of Limerick City & County Council with whom copyright resides.
DO NOT SCALE from this drawing. Use figured dimensions.
Contractor to check all dimensions on site prior to commencement of works. Any discrepancies are to be referred to the ARCHITECT.

NOTES:

Development Summary

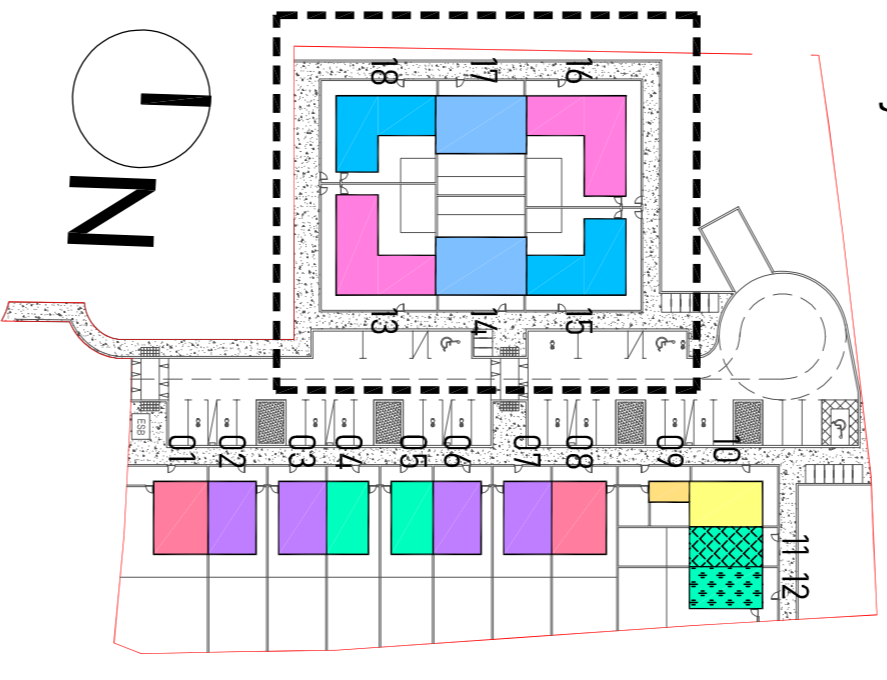
Total Residential Units	18
Total GFA	217,433 sqm
Total Floor Plate	217,433 sqm
Total Floor Plate Area (TFFPA)	217,433 sqm

No. of Units	House Type	Description	No. of Units	% of Total
18	Unit 16	House Type G	18	100%
18	Unit 17	House Type E	18	100%
18	Unit 18	House Type D	18	100%

Schedule of Units

Unit Number	House Type	Unit Size	Specification	GFA (sqm)
16-01	Unit 16	23.72	202	558.00
16-02	Unit 16	23.72	202	558.00
16-03	Unit 16	23.72	202	558.00
16-04	Unit 16	23.72	202	558.00
16-05	Unit 16	23.72	202	558.00
16-06	Unit 16	23.72	202	558.00
16-07	Unit 16	23.72	202	558.00
16-08	Unit 16	23.72	202	558.00
16-09	Unit 16	23.72	202	558.00
16-10	Unit 16	23.72	202	558.00
16-11	Unit 16	23.72	202	558.00
16-12	Unit 16	23.72	202	558.00
16-13	Unit 16	23.72	202	558.00
16-14	Unit 16	23.72	202	558.00
16-15	Unit 16	23.72	202	558.00
16-16	Unit 16	23.72	202	558.00
16-17	Unit 16	23.72	202	558.00
16-18	Unit 16	23.72	202	558.00

Key Plan



FOR PLANNING PURPOSES ONLY NOT FOR CONSTRUCTION

REVISIONS

DATE	REV.	BY	CHECKED	DESCRIPTION

Limerick City & County Council
Urban Housing Construction & Maintenance
Department
Tel: 061-5569000

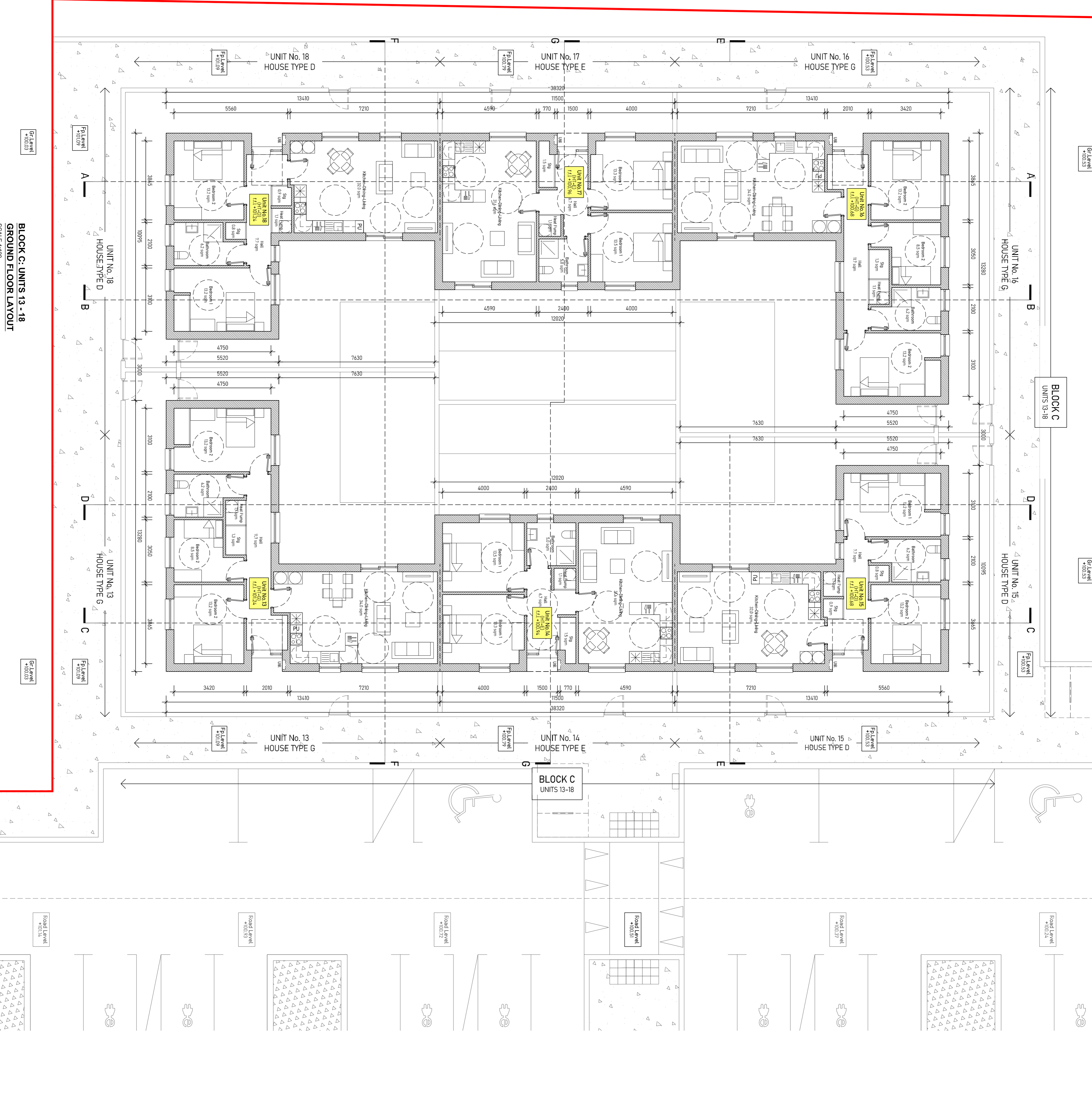
PROJECT:
18 no. HOUSING UNITS AT BRUGH NA DEISE, BRUFF, COUNTY LIMERICK

SHEET: SECTION 179A
DRAWING TITLE: PROPOSED GA DRAWINGS FLOOR LAYOUTS: UNITS 13-18
SCALE: 1:100

DATE: 29th February 2024
SCALE: 1:100
DRAWN: BR

CHECKED: -
DATE: 19/01-2022
SHEET SIZE: RENSNIK
JOB NO.: 19101

FILE NAME: -



BLOCK C: UNITS 13 - 18
GROUND FLOOR LAYOUT
SCALE 1:100

Gr Level
+00.03

Gr Level
+00.33

Gr Level
+00.33

Gr Level
+00.24

Road Level
+00.37

Road Level
+00.37

Road Level
+00.24

Gr Level
+00.03

Gr Level
+00.03

Gr Level
+00.33

Road Level
+00.16