

**COPYRIGHT:**  
The design and details shown on this drawing are applicable to their project only and may not be reproduced in whole or in part or be used for any other project or purpose without the written permission of Limerick City & County Council with whom copyright resides. **DO NOT SCALE** from this drawing. Use figured dimensions. Contractor to check all dimensions on site prior to commencement of works. Any discrepancies are to be referred to the ARCHITECT.

**NOTES:**

**Development Summary**

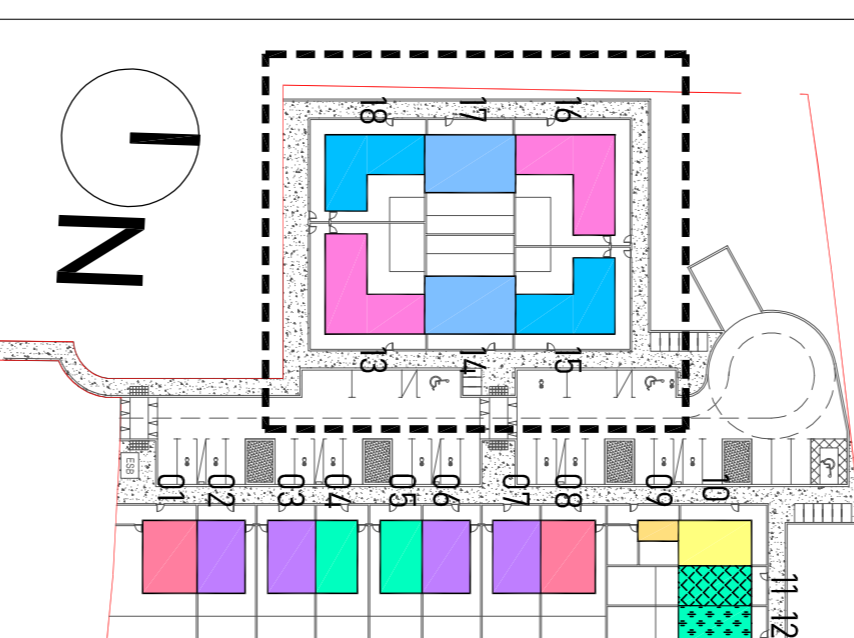
Residential (General)	18 Units
Net GFA (m <sup>2</sup> )	22,724.53
Net GFA (sq ft)	245,910.00
Net GFA (sq ft) (Gross)	252,270.00
Net GFA (sq ft) (Net)	227,940.00
Net GFA (sq ft) (Net)	252,270.00

No. Bedrooms	House Type	Description	No. of Units	% of Total
1	1810	1810	1	5.26%
2	1810	1810	1	5.26%
3	1810	1810	1	5.26%
4	1810	1810	1	5.26%
5	1810	1810	1	5.26%
6	1810	1810	1	5.26%
7	1810	1810	1	5.26%
8	1810	1810	1	5.26%
9	1810	1810	1	5.26%
10	1810	1810	1	5.26%
11	1810	1810	1	5.26%
12	1810	1810	1	5.26%
13	1810	1810	1	5.26%
14	1810	1810	1	5.26%
15	1810	1810	1	5.26%
16	1810	1810	1	5.26%
17	1810	1810	1	5.26%
18	1810	1810	1	5.26%

**Schedule of Units**

Unit Number	House Type	No. of Bedrooms	Description	No. of Units	% of Total
1	1810	1	1810	1	5.26%
2	1810	1	1810	1	5.26%
3	1810	1	1810	1	5.26%
4	1810	1	1810	1	5.26%
5	1810	1	1810	1	5.26%
6	1810	1	1810	1	5.26%
7	1810	1	1810	1	5.26%
8	1810	1	1810	1	5.26%
9	1810	1	1810	1	5.26%
10	1810	1	1810	1	5.26%
11	1810	1	1810	1	5.26%
12	1810	1	1810	1	5.26%
13	1810	1	1810	1	5.26%
14	1810	1	1810	1	5.26%
15	1810	1	1810	1	5.26%
16	1810	1	1810	1	5.26%
17	1810	1	1810	1	5.26%
18	1810	1	1810	1	5.26%

**Key Plan**



**FOR PLANNING PURPOSES ONLY NOT FOR CONSTRUCTION**

**REVISIONS**

DATE	REV.	BY	CHECKED	DESCRIPTION

**Limerick City & County Council**  
Urban Housing Construction & Maintenance  
Department  
Tel: 061-556000

**PROJECT:**  
18 no. HOUSING UNITS AT BRUGH NA DEISE, BRUFF, COUNTY LIMERICK

**STAGE:**  
SECTION 179A

**DRAWING TITLE:**  
PROPOSED BLOCK C GA DRAWINGS ELEVATIONS & SECTIONS SHEET 3

**SCALE:**  
1:100

**DATE:**  
28th February 2024

**DRAWING NO.:**  
19101-305

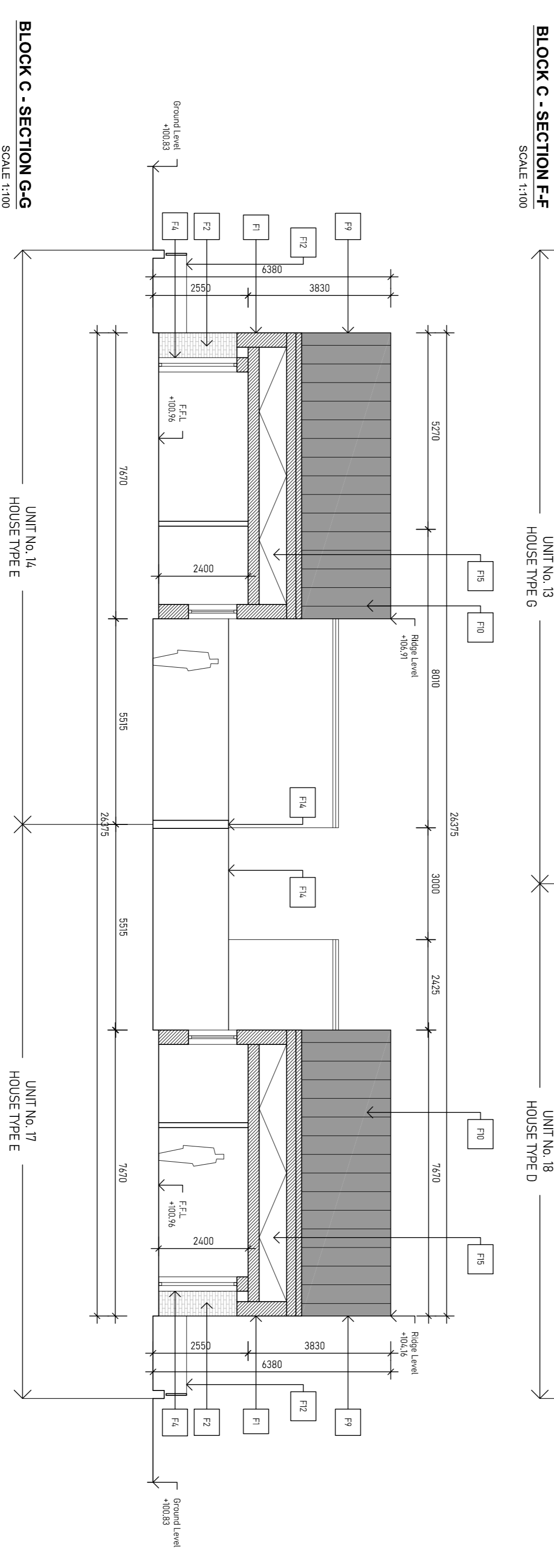
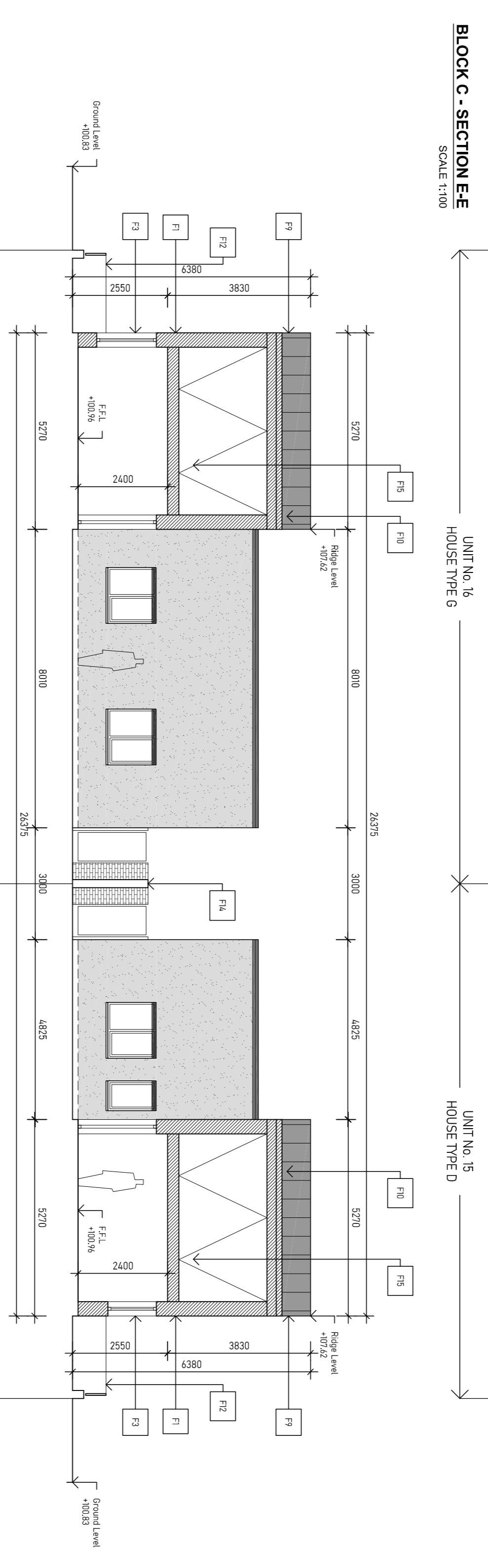
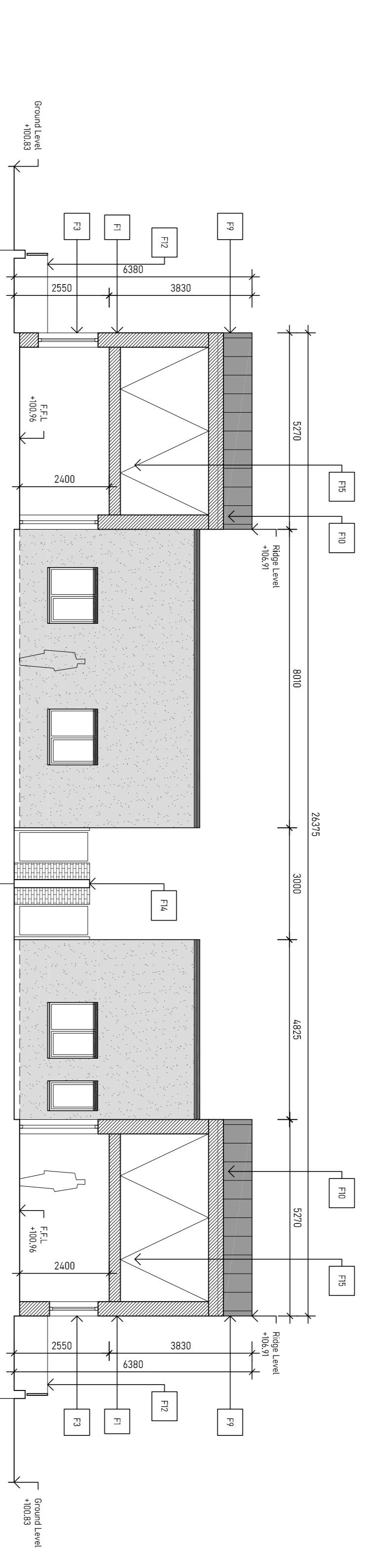
**DRAWN:**  
BR

**CHECKED:**  
-

**SHEET SIZE:**  
R50XK

**JOB NO.:**  
19101

**FILE NAME:**  
-



**NOTES:**  
For all external finishes, refer to ICC Architects design statement and compliance with same, and all proposed materials and finishes to be approved by the Employer's Representative at detailed design stage, and prior to commencement of works.  
F1: Selected masonry render external wall finish to Employer's Representative approval.  
F2: Selected clay brick finish to Employer's Representative approval.  
F3: Selected Alu-Clad windows to Employer's Representative approval.  
F4: Selected Alu-Clad doors to Employer's Representative approval.  
F5: Selected Alu-Clad flush panel front entrance doors with full height to Employer's Representative approval.  
F6: Selected Alu-Clad sliding patio doors to Employer's Representative approval.  
F7: Selected Alu-Clad sliding patio doors to Employer's Representative approval.  
F8: Selected render finish to Employer's Representative approval.  
F9: Flush gable style dry verge roof trim to Employer's Representative approval.  
F10: Selected Alu-Clad roof finish to Employer's Representative approval.  
F11: Selected Alu-Clad roof finish to Employer's Representative approval.  
F12: Front boundary walls & railings to be a combination of brick wall and stone and other boxes to be fitted to slates of entrance recesses.  
F13: Side access gates and walls to be a combination of brick wall and stone and other boxes to be fitted to slates of entrance recesses.  
F14: Rear boundary walls to be 2m high concrete post and plank boundary fence.  
F15: Structure to be defined by base schedule.  
F16: Powdercoated galvanneal steel railing to match railings elsewhere.