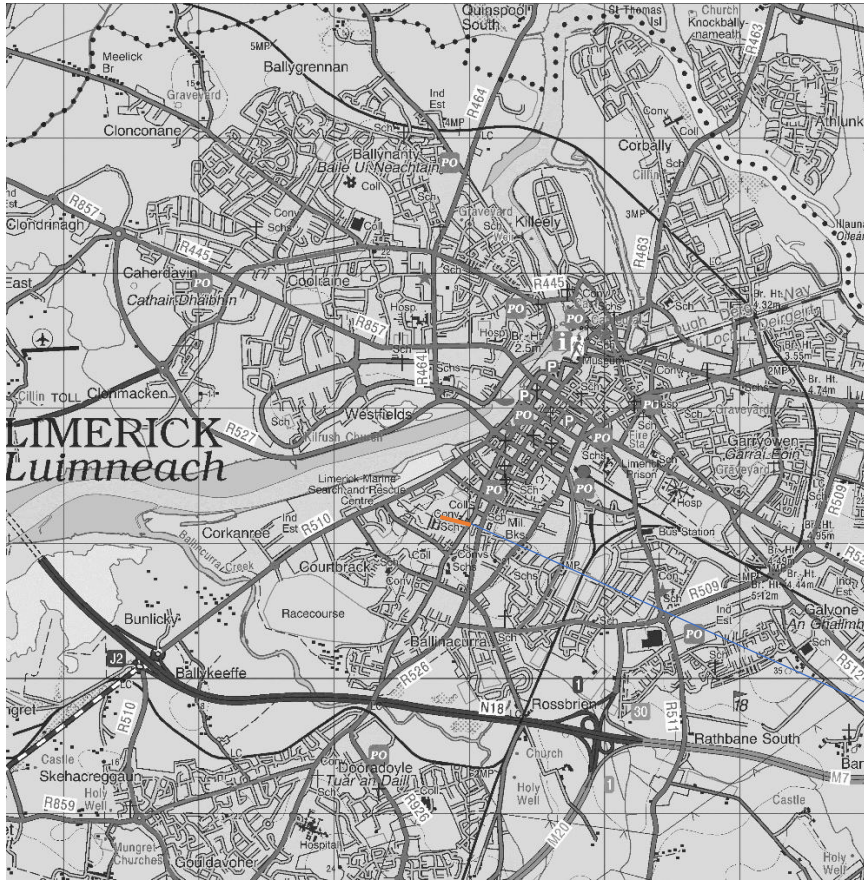


**TRANSPORT AND MOBILITY REPORT IN ACCORDANCE WITH SECTION 38 OF THE ROAD TRAFFIC ACT, 1994, AS AMENDED BY SECTION 46 OF THE PUBLIC TRANSPORTATION REGULATION ACT 2009**

**Re: TRAFFIC CALMING WORKS ON THE  
L10424 LAUREL HILL AVENUE, SOUTH CIRCULAR ROAD**



Location of Section  
38 L-10424

**Caitriona Gallagher**  
Senior Executive Technician

*Sen mgy*  
27.02.24

**Sean McGlynn**  
Senior Engineer

Pursuant to SECTION 38 OF THE ROAD TRAFFIC ACT, 1994, AS AMENDED BY SECTION 46 OF THE PUBLIC TRANSPORTATION REGULATION ACT 2009 this report is submitted to the members of Limerick City & County Council. In accordance with Section 38 of the above Act, it is proposed to proceed as indicated in Section 5 of this report.

*Brian Kennedy*  
**Brian Kennedy**  
Director of Services  
Transport and Mobility Directorate

Date: 27/02/2024

## **TABLE OF CONTENTS**

- 1. Foreword**
- 2. Description of the nature and extent of the proposed development**
- 3. Background to proposed works**
- 4. Appropriate assessment findings**
- 5. Submissions with respect to the proposed development**
- 6. Analysis of Submissions and Conclusion**

### **1.0 Foreword**

This report has been prepared pursuant to provisions of Section 38 of the Road Traffic Act, 1994, as amended by Section 46 of the Public Transportation Regulation Act 2009, Limerick City and County Council hereby gives notice of its intention to carry out traffic calming works on the L-10424 Laurel Hill Avenue, South Circular Road.

### **2.0 Description of the nature and extent of the proposed development**

The proposed works are to be carried out at the L-10424 Laurel Hill Avenue which includes three number build out areas for traffic calming; raised table area at the school entrance gates; new raised pedestrian crossing; raised table at the entrance to Laurel Hill Avenue and associated tactile paving and installation of prohibitory signage restricting traffic to “local access only” during school operational times.

**The plans and particulars went on public display from the 26<sup>th</sup> January 2024 to 23<sup>rd</sup> of February 2024. Submissions and observations had to be submitted by 5pm on the 23<sup>rd</sup> of February 2024.**

## Site Layout:

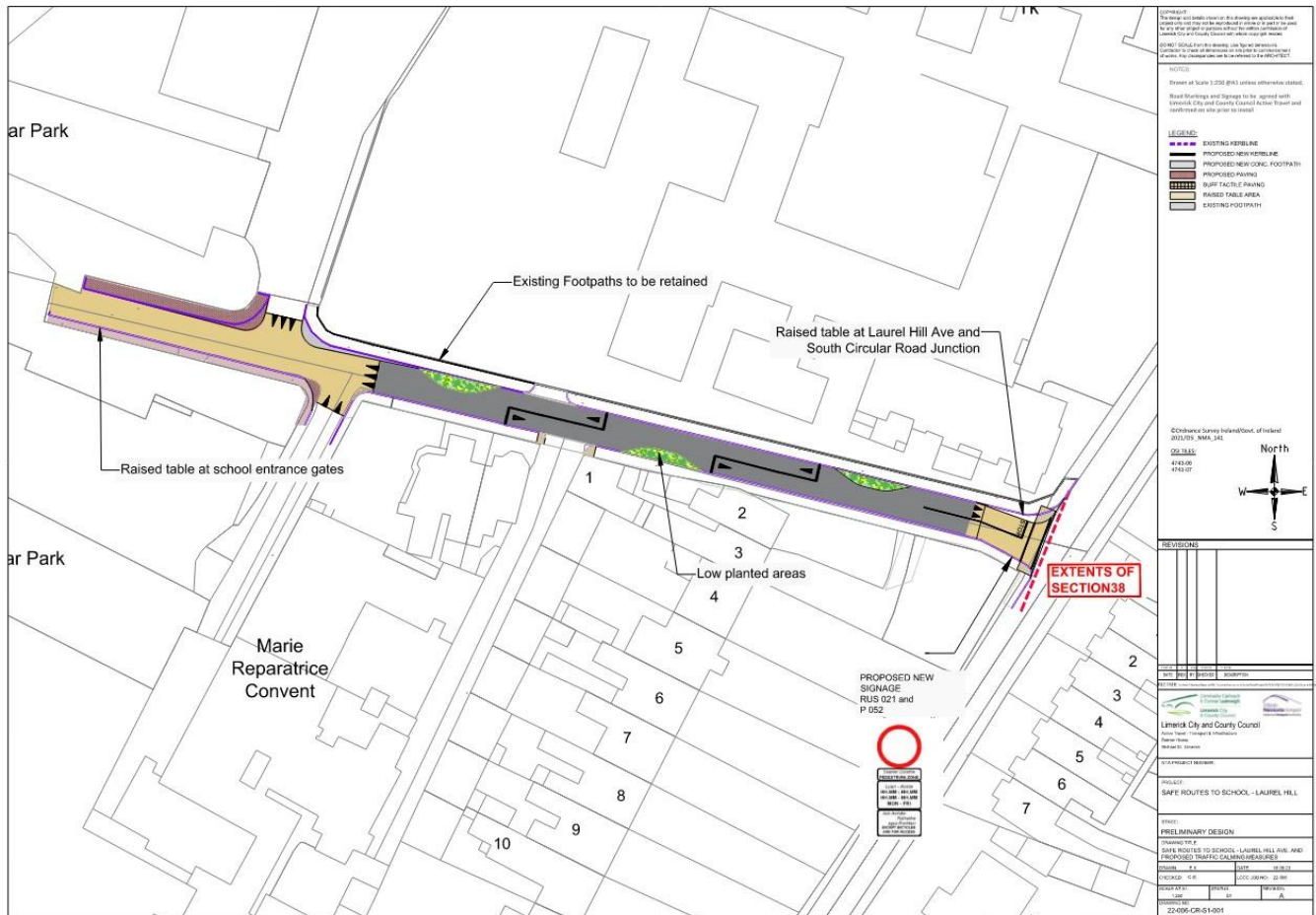


Figure 2.1: Site Layout

### 3.0 Background to proposed works

The Safe Routes to School Programme is designed to encourage as many pupils and students as possible in primary and post-primary schools to walk and cycle. It has three aims:

- To accelerate the delivery of walking/scooting and cycling infrastructure on key access routes to schools.
- To provide “front of school” treatments which will enhance access to your school grounds.
- To expand the amount of bike parking available at schools.

Laurel Hill Coláiste applied to the Green School initiative to be part of the “Safe Routes to School” scheme, this was accepted as a location where improvements were needed to ensure the safety of children on their daily journey to school. Works are funded by the National Transport Authority and delivered by Limerick City and County Council in conjunction with the Safe Routes to School Programme.

This project is located on the outskirts of the approved South Circular Road Active Travel Scheme which will improve cycle connectivity in the locale.

Limerick City and County Council Active Travel has engaged in a consultation process with relevant stakeholders ( Principals of Laurel Hill Coláiste, Laurel Hill and St. Clements Schools – all served by Laurel Hill Avenue) over the past number of months.

## 4.0 Habitats Directive Project Screening Assessment

An Appropriate Assessment screening report was prepared by Rosie O'Donnell, Executive Planner, Limerick City and County Council.

This report concluded that there are not likely to be significant effects from the proposed works to the European Sites identified and gave approval to proceed with the works.

Due to the small scale, nature of the project, an Environmental Impact Assessment Report (EIAR) is not required.

## 5.0 Submissions Received

### Postal:

None

### Online Submissions:

There was one submission made through [mypoint.limerick.ie](http://mypoint.limerick.ie), it is as follows.

Title:

### **Support for Section 38 for Proposed Works at Laurel Hill Avenue, South Circular Road (L-10424)**

*As residents of Laurel Hill Avenue, we wish to offer our support to these plans which we feel will increase safety and deter vehicle drivers from making unnecessary journeys down to our residential cul-de-sac.*

*Although Laurel Hill Avenue is now the access point for three large schools, the avenue was simply not designed or built to sustain current traffic levels due to the large number of students using the Avenue on their daily journeys to and from school. Vehicles moving in opposite directions have difficulties passing due to the access road being narrow (please see recent images attached of a dangerous gridlock situation on the Avenue during school pickup hours). There are no designated parking spaces on the street, so parents or guardians who travel onto Laurel Hill Avenue to collect students inevitably double-park, sometimes impeding pedestrians on the footpath.*

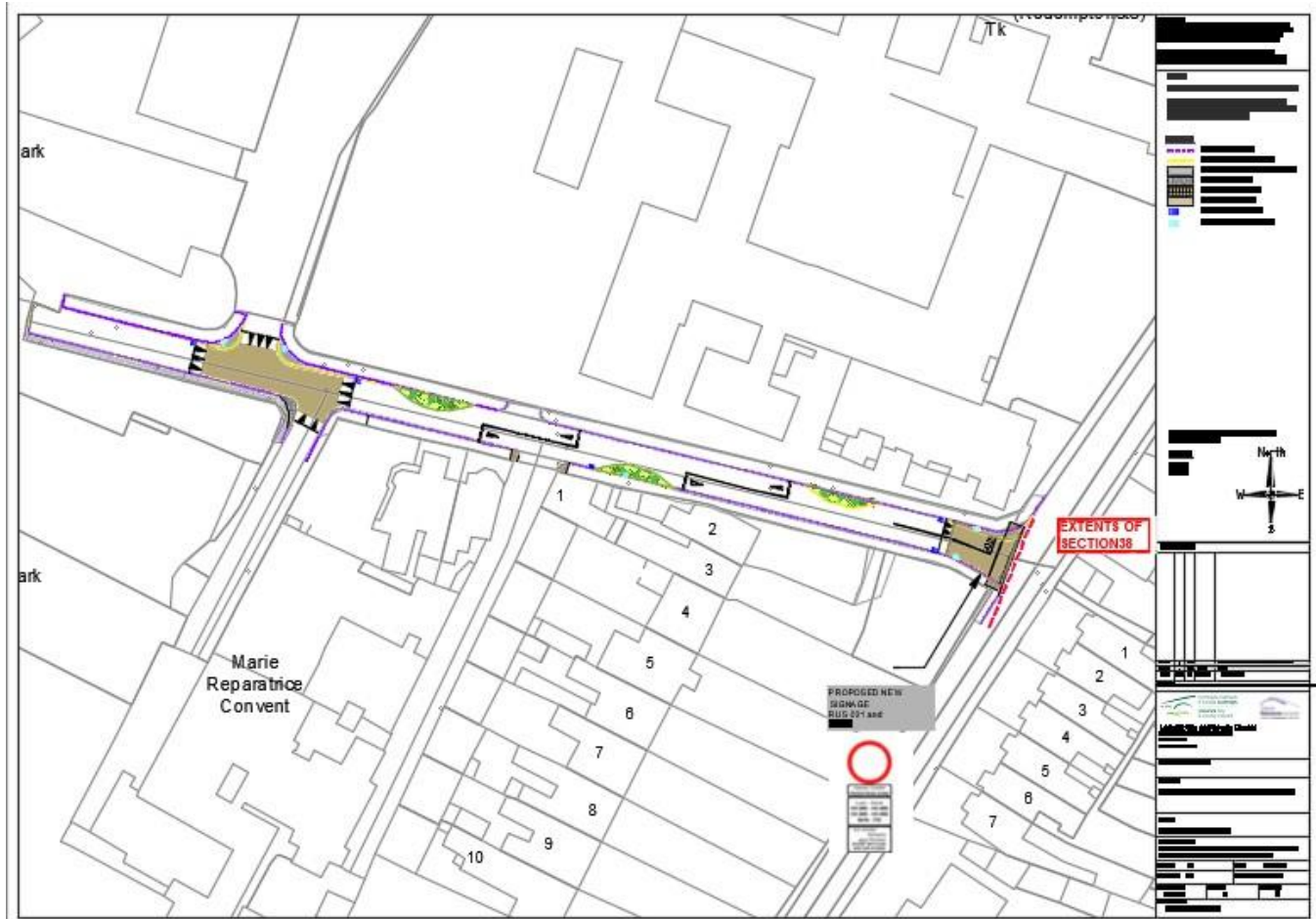
*The speed at which vehicles travel down Laurel Hill Avenue is also a problem and a danger to children travelling to school by foot or bicycle. There are no speed reduction measures on Laurel Hill Avenue despite it being the access point for three schools and we have witnessed cars travelling at frightening speeds while driving to and from the schools. Large groups of young students cross the road daily without caution while cars speed towards the schools. We are fearful that a bad accident is just a matter of time.*

*Additionally, the current levels of traffic using Laurel Hill Avenue undoubtedly contributes to poor air quality in an area with a large concentration of schools.*

*We hope the signage, speed table and build-out areas will discourage non-resident/non-school staff drivers from continuing to use Laurel Hill Avenue to access the schools which increases double-parking and accident risks. These measures, which will hopefully increase pedestrian and cyclist access to the schools, and reduce current safety and pollution hazards, have our support.*

## 6.0 Analysis of Submissions and Conclusion

Based on historical consultation with three schools served by Laurel Hill Avenue and the submissions made to public consultation Advertised Section 38 Limerick City and County Council will proceed with works as set out in Section 38 with one minor alteration on the reduction of the raised table at the school entrance, this reduction is based on a cost benefit analysis.



Limerick City and County Council Active Travel welcomes the feedback received on this project and proposes to proceed in accordance with the modified plans as above to this report.